

**COMBUSTION AIR INDUCER
 REPLACEMENT KIT**

**INSTALLATION INSTRUCTIONS FOR COMBUSTION AIR INDUCER REPLACEMENT
 KIT USED ON KG/SG/ZG/LGH024-090 GAS PACKAGED UNITS**

Shipping and Packing List

Package 1 of 1 contains:

- 1- Combustion air inducer assembly
- Bag assembly containing:
- 1-Gasket
 - 5-#10 Sheet metal screws

Application

See table 1 for usage.

⚠ WARNING

Improper installation, adjustment, alteration, service or maintenance can cause property damage, personal injury or loss of life. Installation and service must be performed by a qualified installer, service agency or the gas supplier

Installation

- 1- Disconnect all power and gas supply to unit.
- 2- Open the heat section access panel. See figure 1, 2, or 3.

⚠ CAUTION

As with any mechanical equipment, contact with sharp sheet metal edges can result in personal injury. Take care while handling this equipment and wear gloves and protective clothing.

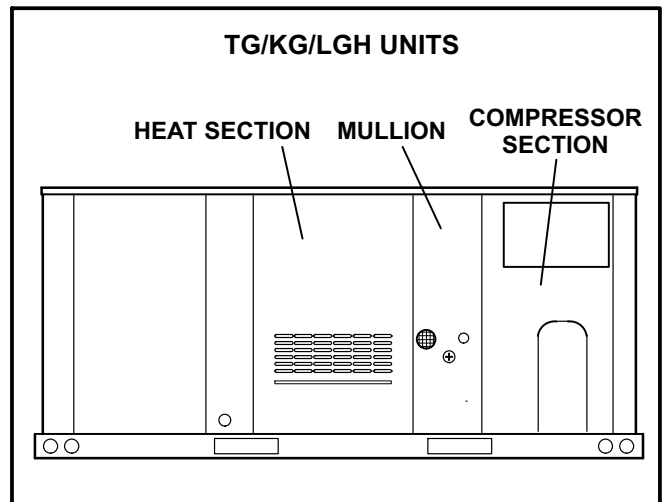


FIGURE 1

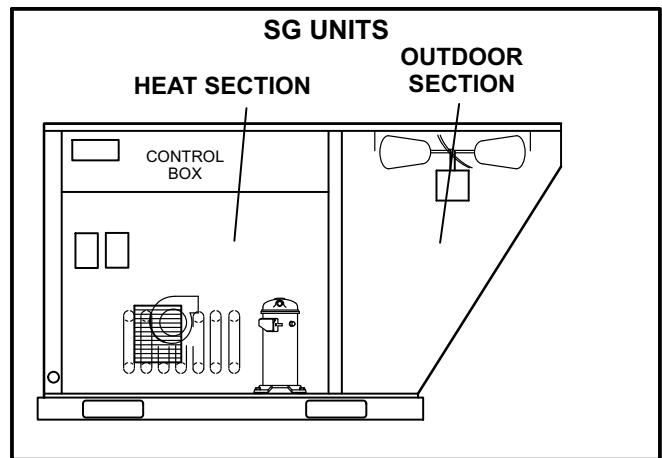


FIGURE 2

TABLE 1

Heating Input	Speeds	Kit
150, 105/108	Two-speed	44W30; 602107-02
65, 105/108, 150	Single-speed - Units Built Through April 8, 2016.	19W04; LB-112090B
65, 105/108, 150	Single-speed - Units Built April 11, 2016 Through July 8, 2016. - P, Y, M, J-Volt Units Built After July 8, 2016.	13Y15*; LB-112090C
65, 105/108, 150	Single-speed - G-Volt Units Built After July 8, 2016.	15F58; LB-112090D

*The 13Y15 kit can be used on units built before April 11, 2016 if a new flue tube (elbow) is ordered.

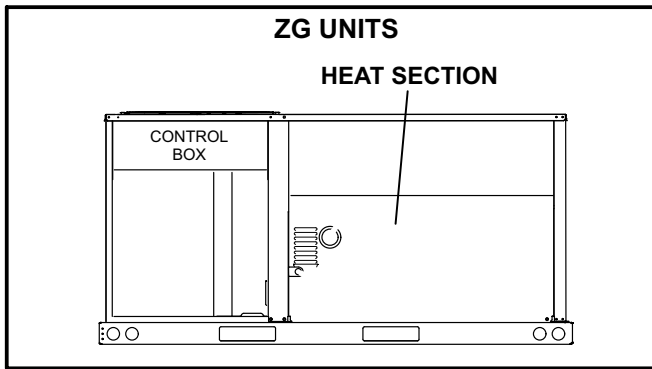


FIGURE 3

- 3- Disconnect jack/plug from harness routed to combustion air inducer.
- 4- Remove screws securing combustion air inducer to flue box. Remove combustion air inducer. See figure 4.
- 5- Remove flue elbow from combustion air inducer and set aside.
- 6- Fit flue elbow onto replacement combustion air inducer.
- 7- Install replacement combustion air inducer and gasket. See figure 5. Secure with screws provided in kit.

8- Connect jack/plug to combustion air inducer.

9- Replace heat access panel and connect power and gas. Start unit as shown in unit installation instruction.

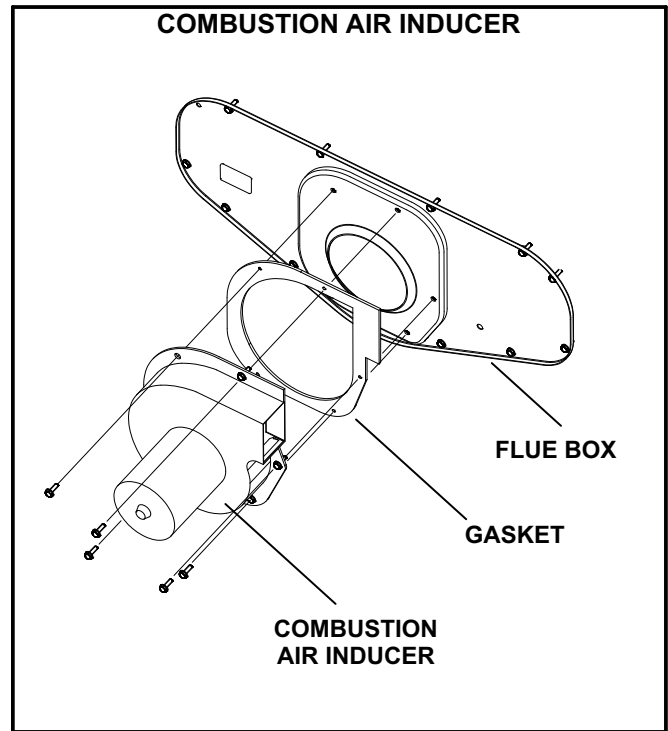


FIGURE 5

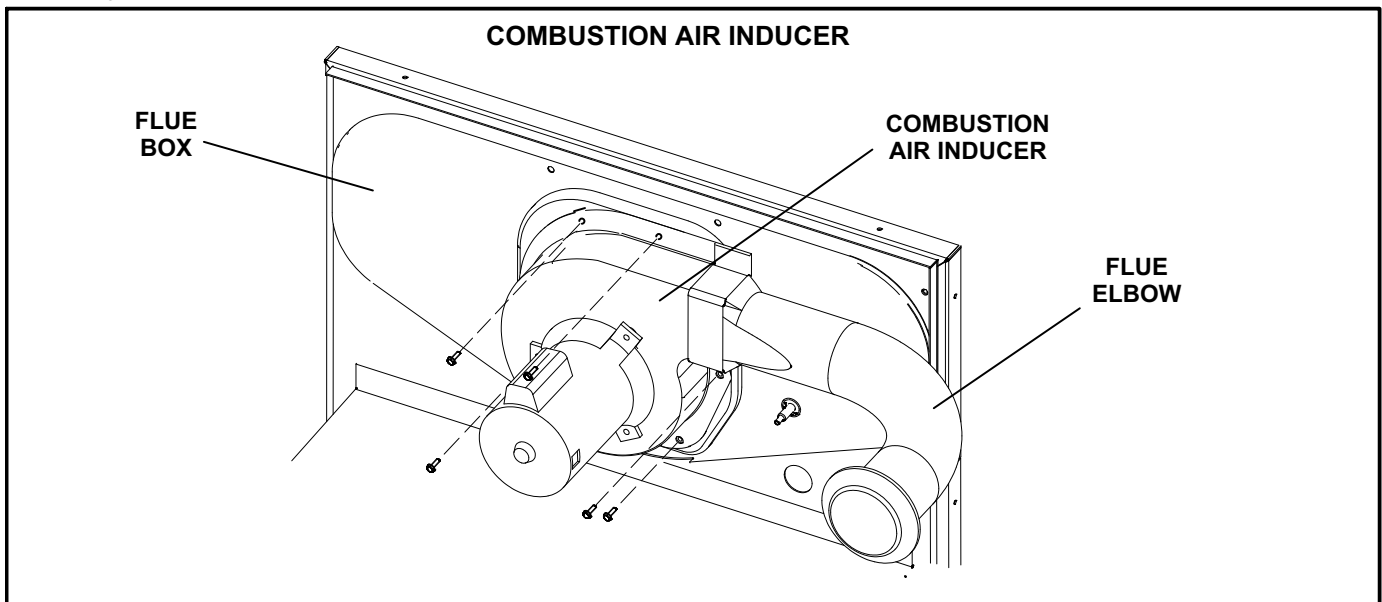


FIGURE 4