

**INSTALLATION INSTRUCTIONS FOR REPLACEMENT RING GASKET KIT 81W46 FOR
USE ON 90% GAS FURNACES**

⚠ WARNING

Improper installation, adjustment, alteration, service or maintenance can cause property damage, personal injury or loss of life. Installation and service must be performed by a licensed professional installer (or equivalent), service agency or the gas supplier.

Shipping & Packing List

1 - Ring gasket 83L0401

Application

Use kit 81W46 to replace the ring gasket between the combustion air inducer and cold end header box for all variable capacity and single-stage 90% gas furnaces.

Installation

Figure 1 shows ring gasket installation used in upflow/horizontal units and figure 2 shows installation in downflow units.

⚠ CAUTION

As with any mechanical equipment, personal injury can result from contact with sharp sheet metal edges. Be careful when you handle this equipment.

- 1- Set the thermostat to the lowest setting. Shut off the gas supply to the furnace; then disconnect the electrical power. Unit may have more than one power switch.
- 2- Remove the access panel(s) on the furnace.
- 3- Disconnect the electrical power wiring harness from the combustion air inducer. Disconnect the ground wire if separate from the plug.
- 4- Loosen clamps securing exhaust fitting to combustion air inducer.
- 5- Remove screws (set aside) which secure combustion air inducer to cold end header box. Remove combustion air inducer assembly.
- 6- Remove the ring gasket from the front of the cold end header box. Install the replacement ring gasket..
- 7- Use the existing screws to secure the combustion air inducer to the cold end header box. Use a torque wrench to tighten screws to 30 in. lbs.
- 8- Use existing clamps to secure combustion air inducer to exhaust fitting. *This connection should be leak free.*
- 9- Connect existing wiring harness to combustion air inducer and reconnect ground wire.
- 10- Restore electrical power and gas supply to the furnace.
- 11- Refer to the unit installation instructions or unit nameplate for proper start-up procedure.



Ring Gasket in Upflow/Horizontal Furnaces

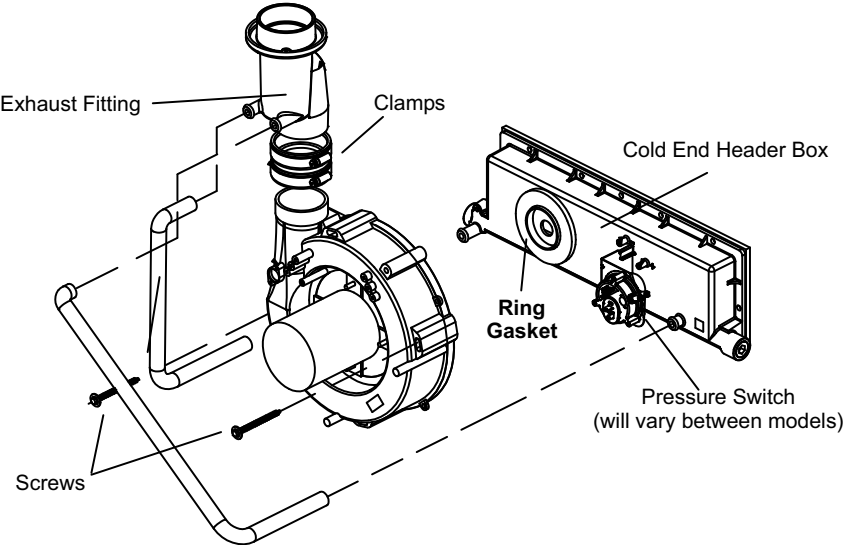


Figure 1

Ring Gasket in Downflow Furnaces

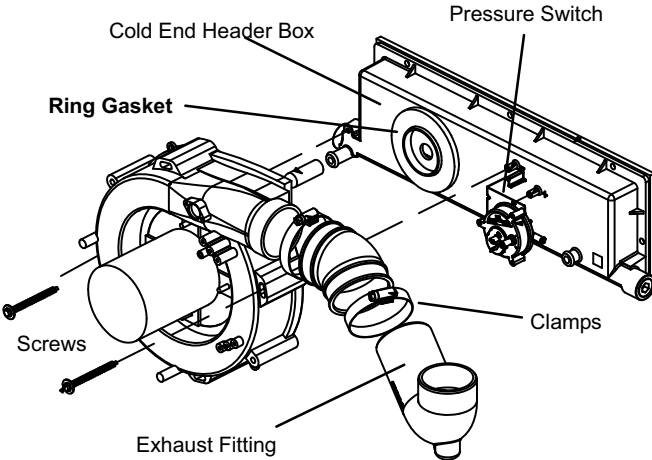


Figure 2