

# GAS UNITS KITS & ACCESSORIES

507014-04  
04/17  
Supersedes 507014-03

## COMBUSTION AIR INDUCER REPLACEMENT KIT

### INSTALLATION INSTRUCTIONS FOR REPLACEMENT COMBUSTION AIR INDUCER KITS 15G08, 15X66, 16A66, 16A63 AND 93W13 FOR USE ON 90% GAS FURNACES

#### **⚠ WARNING**

Improper installation, adjustment, alteration, service or maintenance can cause property damage, personal injury or loss of life. Installation and service must be performed by a licensed professional installer (or equivalent), service agency or the gas supplier.

#### Shipping and Packing List

- 1 - Combustion air inducer
- 1 - Gasket
- 4 - #10 - 16 x 2-3/4 screws
- 2 - Adapter wire harness

#### Application

Combustion air inducer replacement kits are used with units as detailed below.

**TABLE 1**

Furnace Type	Kit
Modulating	15G08
Modulating	16A66 (low noise)
Single-Stage	9313
Single-Stage	15X66 (low noise)
Single-Stage	16A63 (low noise)

Figure 1 shows combustion air inducer installation used in upflow/horizontal units, figure 2 shows installation in down-flow units and figure 3 shows installation in multi-position units.

#### **⚠ CAUTION**

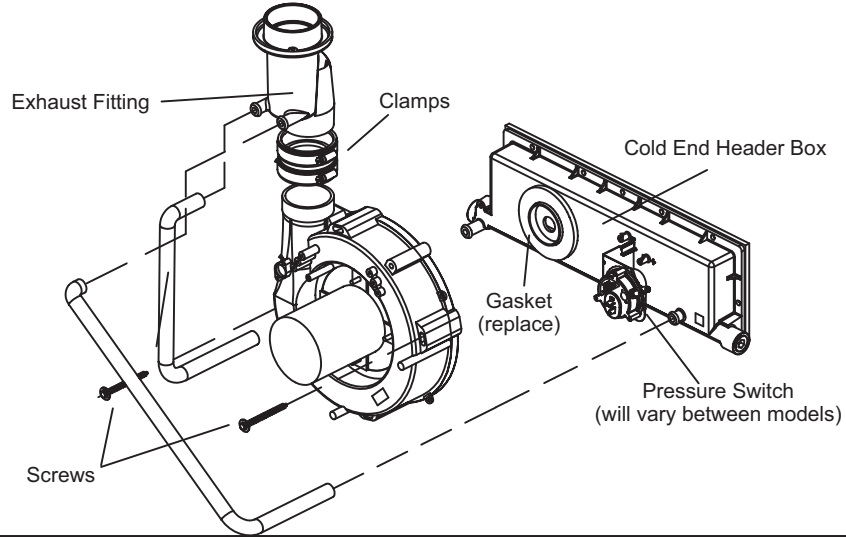
As with any mechanical equipment, contact with sharp sheet metal edges can result in personal injury. Take care while handling this equipment and wear gloves and protective clothing.

- 1 - Set the thermostat to the lowest setting. Shut off the gas supply to the furnace; then disconnect the electrical power. Unit may have more than one power switch.

- 2 - Remove the access panel(s) on the furnace.
- 3 - Disconnect the electrical power wiring harness from the combustion air inducer. Disconnect the ground wire if separate from the plug. Multi-position furnaces (figure 3) - Remove pressure switch assemblies (label wiring if removed) and thermal limit (if equipped) mounted to combustion air inducer.
- 4 - Loosen clamps securing exhaust fitting to combustion air inducer.
- 5 - Remove screws (set aside) which secure combustion air inducer to collector box. Remove combustion air inducer assembly.
- 6 - Remove the gasket from the front of the collector box. Install the replacement gasket before installing the replacement inducer.
- 7 - Use the existing screws (or screws provided) to secure the replacement combustion air inducer to the collector box. Use a torque wrench to tighten screws to 30 in. lbs.
- 8 - Use existing clamps to secure replacement combustion air inducer to exhaust fitting. This connection should be leak free. Multi-position furnaces (figure 3) - Reinstall pressure switch assemblies and thermal limit (if equipped). Make sure pressure switch wiring is correct.
- 9 - Connect existing wiring harness to replacement inducer and reconnect ground wire. For inducer 93W13 and furnaces with serial numbers prior to 5912GXXXX, the enclosed adapter harness may be needed. The adapter harness connects the inducer to the existing furnace wire harness. See figure 4.
- 10 - Restore electrical power and gas supply to the furnace.
- 11 - Refer to the unit installation instructions or unit nameplate for proper start-up procedure.

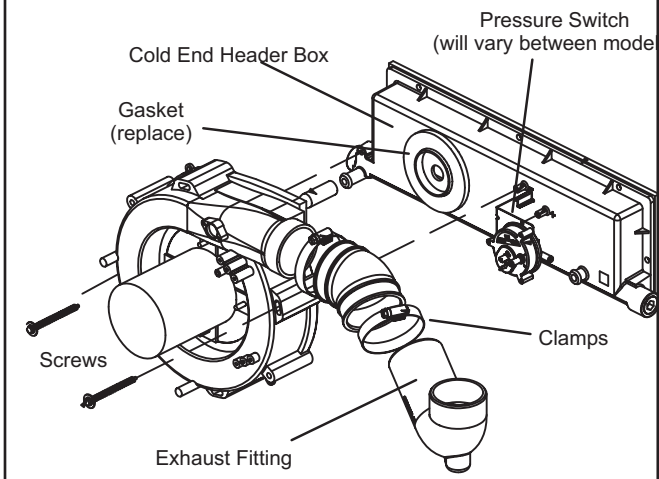


### Combustion Air Inducer in Upflow/Horizontal Furnaces



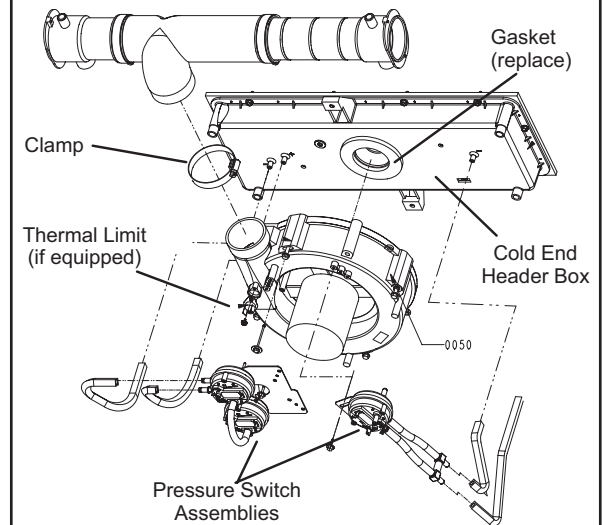
**FIGURE 1**

### Combustion Air Inducer in Downflow Furnaces



**FIGURE 2**

### Combustion Air Inducer in Multi-Position Furnaces



**FIGURE 3**

### Adapter Wire Harness

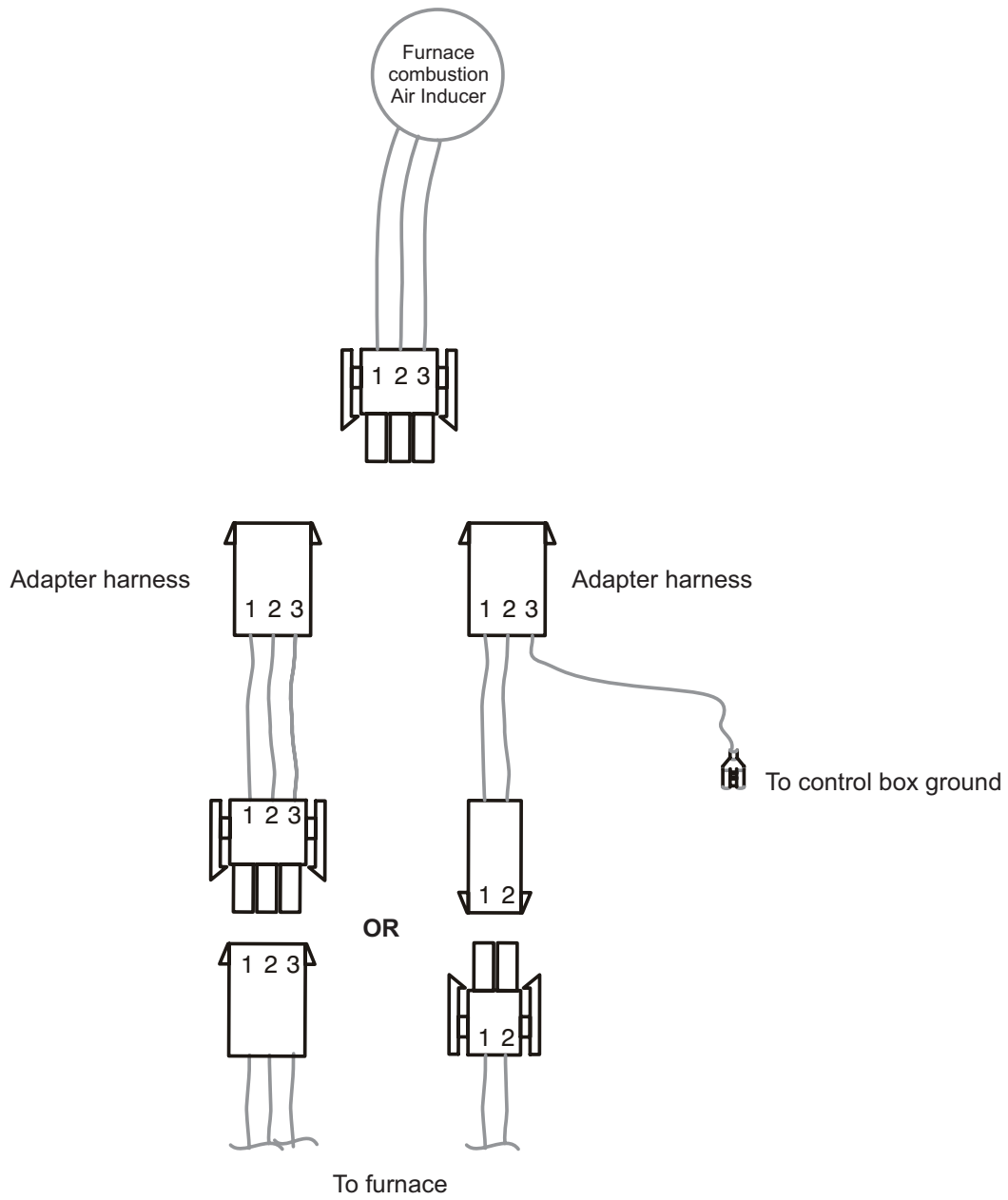


FIGURE 4