



Gas Furnaces 92AF

PRODUCT SPECIFICATIONS

INSTALLATION OPTIONS

- Available in Upflow/Horizontal and Counterflow models

HEAT EXCHANGER

- Aluminized steel tapered design primary heat exchanger with crimped construction for long life
- Stainless steel secondary heat exchanger
- Flue condensate trap furnished

BURNERS

- Aluminized steel inshot burners for smooth combustion

CABINET CONSTRUCTION

- Unitized construction for cabinet integrity
- Bottom or side return air
- Baked on pre-painted steel cabinet finish
- Left or right side gas and electric entry
- Less than 2% air leakage (meets ANSI/ASHRAE Standard 193-2010)

BLOWER

- Easily removable slide-out blower design
- PSC multi-speed permanently lubricated blower motor for low maintenance and optimum efficiency

CONTROLS

- Single stage gas valve
- Integrated ignition and fan control board features self diagnostics
- Hot surface ignitor

VENTING

- One or two pipe venting ready

92.1% AFUE
44,000 to 110,000 Btuh Input
1.5 to 5 Tons Add-On Cooling



Upflow /
Horizontal



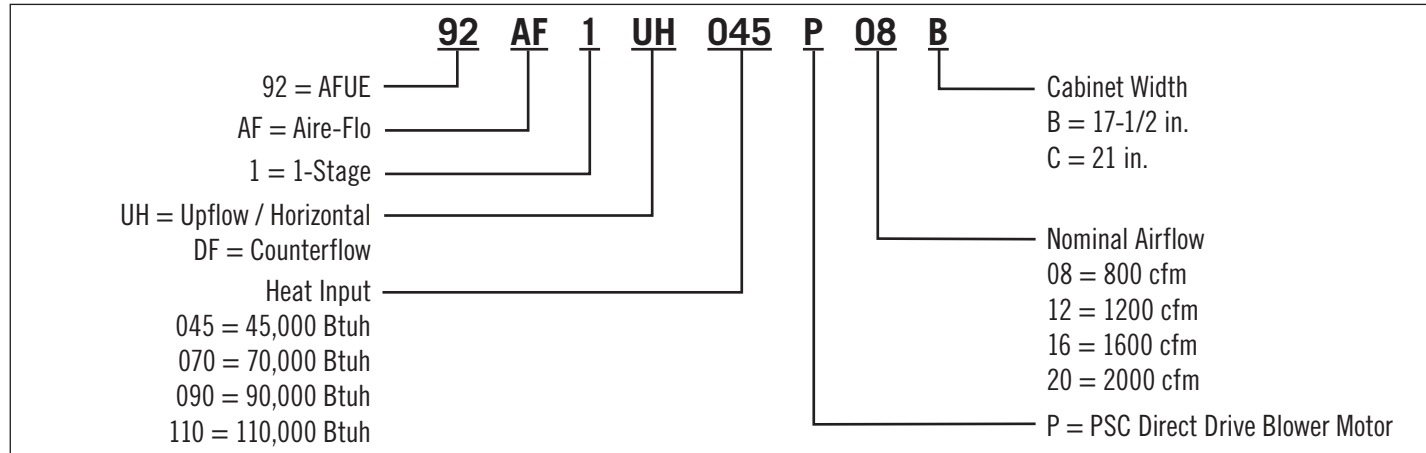
Counterflow

Warranty
Heat Exchanger - 20 Year Limited
Parts - 5 Year Limited

Gas Furnaces

92AF

Model Number Identification



Specifications

Model No.	92AF1UH045P08B	92AF1UH045P12B	92AF1UH070P08B	92AF1UH070P12B	92AF1UH090P12C	92AF1UH090P16C
	Upflow / Horiz.	Upflow / Horiz.	Upflow / Horiz.	Upflow / Horiz.	Upflow / Horiz.	Upflow / Horiz.
Input Btuh	44,000	44,000	66,000	66,000	88,000	88,000
Output Btuh	41,000	42,000	62,000	62,000	83,000	83,000
AFUE (Isolated Comb. System)	92.1%	92.1%	92.1%	92.1%	92.1%	92.1%
Temperature Rise (°F)	35 - 65	25 - 55	50 - 80	40 - 70	50 - 80	40 - 70
Gas Pipe Size (in.)	1/2	1/2	1/2	1/2	1/2	1/2
Inlet/Vent Connection in. (diameter)	2	2	2	2	2	2
Volts/Hertz/Phase	120/60/1	120/60/1	120/60/1	120/60/1	120/60/1	120/60/1
Blower Motor Horsepower	1/5	1/3	1/5	1/3	1/3	1/2
Add-On Cooling (tons)	1.5-2	2.5-3	1.5-2	2.5-3	2-3	3-4
Circuit Breaker or Fuse	15	15	15	15	15	15
Full Load Amps	3.1	6.1	3.1	6.1	6.1	8.2
Blower Wheel Size (Dia. x Width)	10 x 8	10 x 8	10 x 8	10 x 8	10 x 8	10 x 10
Shipping Weight (lbs.)	120	122	125	127	143	146

Model No.	92AF1UH110P16C	92AF1UH110P20C	92AF1DF045P12B	92AF1DF070P12B	92AF1DF090P16C
	Upflow / Horiz.	Upflow / Horiz.	Counterflow	Counterflow	Counterflow
Input Btuh	110,000	110,000	44,000	66,000	88,000
Output Btuh	104,000	104,000	42,000	62,000	84,000
AFUE (Isolated Comb. System)	92.1%	92.1%	92.1%	92.1%	92.1%
Temperature Rise (°F)	50 - 80	40 - 70	25 - 55	50 - 80	40 - 70
Gas Pipe Size (in.)	1/2	1/2	1/2	1/2	1/2
Inlet/Vent Connection in. (diameter)	2	2	2	2	2
Volts/Hertz/Phase	120/60/1	120/60/1	120/60/1	120/60/1	120/60/1
Blower Motor Horsepower	1/2	1	1/3	1/3	1/2
Add-On Cooling (tons)	4	4-5	2.5-3	2.5-3	3-4
Circuit Breaker or Fuse	15	15	15	15	15
Full Load Amps	8.2	11.5	6.1	6.1	8.2
Blower Wheel Size (Dia. x Width)	10 x 10	11 1/2 x 10	10 x 8	10 x 8	10 x 10
Shipping Weight (lbs.)	155	161	124	129	147

Gas Furnaces

92AF

Accessories

Model No.		92AF1UH045P08B 92AF1UH045P12B 92AF1UH070P08B 92AF1UH070P12B	92AF1UH090P12C 92AF1UH090P16C 92AF1UH110P16C 92AF1UH110P20C	92AF1DF045P12B 92AF1DF070P12B	92AF1DF090P16C	
		Upflow / Horizontal	Upflow / Horizontal	Counterflow	Counterflow	
CABINET						
Combustible Flooring Base (Counterflow)		---	---	11M60	11M61	
Horizontal Suspension Kit (Horizontal)		51W10	51W10	---	---	
Return Air Base (Upflow)		50W98	50W99	---	---	
DRAIN KIT						
Condensate Drain Heat Cable	6 ft.	26K68	26K68	26K68	26K68	
	24 ft.	26K69	26K69	26K69	26K69	
Crawlspace Vent Drain Kit	US	51W18	51W18	51W18	51W18	
	Canada	15Z70	15Z70	15Z70	15Z70	
FILTER KITS						
¹ Air Filter and Rack Kit (Upflow/Horiz- ontal)	Horizontal (end)	87L96 (18 x 25 x 1)	87L97 (20 x 25 x 1)	---	---	
	Side Return (Upflow)	Single	44J22	44J22	---	---
		10-pack	66K63	66K63	---	---
		Size	16 x 25 x 1	16 x 25 x 1	---	---
¹ Air Filter and Rack Kit (Counterflow)		---	---	51W07 (2) 20 x 20 x 1	51W08 (2) 20 x 20 x 1	
GAS HEATING						
Natural to LP Conversion Kit		0-7500 ft.	11K49	11K49	11K49	
LP to Natural Conversion Kit		0-7500 ft.	73W81	73W81	73W81	
High Altitude Pressure Switch Kit	4501-7500 ft.	11U65	11U65	11U65	11U65	
	7501-10,000 ft.	11U66	11U66	11U66	11U66	
Natural Gas High Altitude Orifice Kit		7501-10,000 ft.	73W37	73W37	73W37	
LP High Altitude Orifice Kit		7501-10,000 ft.	11K44	11K44	11K44	
² 36K Derate Kit (Natural Gas)		0-10,000 ft.	10K55 (045)	---	10K55 (045)	
NIGHT SERVICE KIT						
Night Service Kit		68W80	68W80	68W80	68W80	
VENTING						
Concentric Vent Kit	2 in. (US)	71M80	69M29	71M80	69M29	
	3 in. (US)	---	60L46	---	60L46	
	2 in. (Canada)	44W92	44W92	44W92	44W92	
	3 in. (Canada)	---	44W93	---	44W93	
Flush Mount	2, 2-1/2 or 3 in. (US)	51W11	51W11	51W11	51W11	
	2, 2-1/2 or 3 in. (Canada)	51W12	51W12	51W12	51W12	
Wall - Close Couple	2 in. (US)	22G44	---	22G44	---	
	3 in. (US)	44J40	44J40	44J40	44J40	
Wall - Close Couple WTK	2 in. (Canada)	30G28	---	30G28	---	
	3 in. (Canada)	81J20	81J20	81J20	81J20	
Roof	2 in.	15F75	15F75	15F75	15F75	
Wall Ring Kit	2 in.	15F74	⁴ 15F74	15F74	⁴ 15F74	
Flashing Kit	2 in.	44J41	44J41	44J41	44J41	

¹ Cleanable polyurethane frame type filter.

² NOTE: 36K Derate Kit Information - Reduced Input is 36,000 Btuh, output is 33,000 Btuh.

³ Kits contain enough parts for two, non-direct vent installations.

⁴ Non-direct vent only.

NOTE - Termination Kits (44W92, 44W93, 30G28, 51W12, 81J20) and Crawl Space Vent Drain Kit (15Z70) are certified to ULC S636 standard for use in Canada only.

Gas Furnaces

92AF

High Altitude Derate

NOTE - Units may be installed at altitudes up to 10,000 ft.

At altitudes above 4501 ft. the unit must be derated to match the manifold pressure information shown below.

Units installed at altitudes of 4501 to 10,000 ft. require a pressure switch change.

Units installed at altitudes of 7501 to 10,000 ft. require an orifice change.

See the Gas Heat Accessories table for ordering information.

NOTE - This is the only permissible derate for these units.

NOTE - In Canada, certification for installations at elevations over 4500 feet is the jurisdiction of local authorities.

Input	Gas	Manifold Pressure in. w.g.					Supply Line Pressure in. w.g. 0 - 10,000 ft.	
		0 - 4500 ft.	4501 - 5500 ft.	5501 - 6500 ft.	6501 - 7500 ft.	7501 - 10,000 ft.	Min.	Max.
		All Sizes	Natural	3.5	3.3	3.2	3.1	3.5
	LPG/Propane	10.0	9.4	9.1	8.9	10.0	11.0	13.0

Blower Data

Model No.	Blower Speed	1 CFM @ External Static Pressure - in w.c. Less Filter									
		.00	.10	.20	.30	.40	.50	.60	.70	.80	.90
92AF1UH045P08B (Upflow / Horizontal)	High	1140	1135	1125	1090	1065	1020	945	910	790	735
	Med/High	920	900	895	870	870	825	780	740	670	575
	Med/Low	765	765	755	725	715	675	640	585	510	460
	Low	710	690	680	660	635	605	555	505	455	390
92AF1UH045P12B (Upflow / Horizontal)	High	1600	1600	1550	1480	1425	1355	1320	1225	1135	1025
	Med/High	1370	1355	1330	1295	1280	1190	1165	1110	1050	950
	Med/Low	1160	1155	1150	1140	1105	1085	1030	975	920	800
	Low	1005	1015	1000	975	975	940	900	855	780	700
92AF1UH070P08B (Upflow / Horizontal)	High	1140	1135	1125	1090	1065	1020	945	910	790	735
	Med/High	920	900	895	870	870	825	780	740	670	575
	Med/Low	765	765	755	725	715	675	640	585	510	460
	Low	710	690	680	660	635	605	555	505	455	390
92AF1UH070P12B (Upflow / Horizontal)	High	1615	1565	1535	1440	1405	1340	1255	1165	1060	955
	Med/High	1355	1365	1340	1300	1255	1200	1125	1080	990	895
	Med/Low	1140	1150	1150	1110	1075	1045	995	935	870	750
	Low	1030	1020	1025	1000	975	945	875	820	750	660
92AF1UH090P12C (Upflow / Horizontal)	High	1620	1610	1565	1525	1485	1431	1365	1295	1200	1060
	Med/High	1340	1335	1335	1300	1295	1260	1210	1155	1065	955
	Med/Low	1130	1135	1145	1135	1110	1090	1035	995	930	820
	Low	965	975	970	970	960	940	900	860	745	695
92AF1UH090P16C (Upflow / Horizontal)	High	2025	1995	1925	1850	1790	1700	1610	1540	1415	1270
	Med/High	1690	1705	1675	1640	1575	1540	1455	1365	1265	1165
	Med/Low	1395	1390	1405	1400	1395	1350	1295	1225	1125	1060
	Low	1200	1205	1205	1170	1170	1140	1100	1030	980	900

Notes:

¹ Maximum approved external static pressure is 0.50 in. w.c.

Gas Furnaces 92AF

Blower Data

Model No.	Blower Speed	1 CFM @ External Static Pressure - in w.c. Less Filter									
		.00	.10	.20	.30	.40	.50	.60	.70	.80	.90
92AF1UH110P16C (Upflow / Horizontal)	High	2030	1950	1935	1885	1830	1750	1660	1540	1420	1290
	Med/High	1750	1755	1675	1660	1585	1565	1485	1380	1290	1175
	Med/Low	1425	1430	1455	1410	1385	1320	1280	1230	1140	1045
	Low	1225	1215	1230	1200	1190	1165	1105	1060	945	850
92AF1UH110P20C (Upflow / Horizontal) Single Side Return Air - Air volumes in bold require field fabricated transition to accommodate 20 x 25 x 1 in. air filter in order to maintain proper air velocity.	High	2520	2555	2465	2370	2275	2185	2060	1930	1825	1665
	Med/High	2135	2135	2105	2045	1990	1930	1850	1760	1660	1520
	Med/Low	1750	1775	1775	1750	1730	1690	1650	1580	1505	1415
	Low	1445	1470	1465	1460	1460	1460	1420	1355	1290	1210
Bottom Return Air, Side Return Air with Optional Return Air Base, Return Air from Both Sides or Return Air from Bottom and One Side.	High	2525	2585	2515	2445	2340	2230	2130	2030	1920	1735
	Med/High	2175	2200	2150	2135	2065	1985	1920	1815	1735	1620
	Med/Low	1820	1860	1840	1790	1770	1755	1685	1640	1560	1450
	Low	1465	1475	1490	1500	1500	1470	1425	1405	1350	1270
92AF1DF045P12B (Counterflow)	High	1615	1605	1500	1450	1350	1300	1195	1140	1025	945
	Med/High	1385	1375	1340	1290	1235	1170	1095	1020	920	800
	Med/Low	1205	1195	1165	1125	1090	1035	990	895	840	700
	Low	1045	1035	1015	975	920	875	840	780	695	605
92AF1DF070P12B (Counterflow)	High	1505	1480	1405	1355	1305	1270	1175	1105	1040	920
	Med/High	1310	1295	1255	1225	1165	1110	1080	1000	925	825
	Med/Low	1090	1070	1055	1045	1010	975	925	855	790	680
	Low	940	935	930	900	890	835	815	745	670	560
92AF1DF090P16C (Counterflow)	High	2075	1995	1910	1825	1730	1630	1530	1430	1300	1185
	Med/High	1890	1830	1775	1705	1620	1530	1450	1340	1245	1110
	Med/Low	1625	1590	1575	1530	1475	1405	1330	1260	1145	1045
	Low	1375	1350	1340	1325	1285	1240	1175	1095	1015	915

Notes:

¹ Maximum approved external static pressure is 0.50 in. w.c.

Gas Furnaces 92AF

Vent Lengths - Feet - Upflow / Horizontal

NOTE - Size intake and exhaust pipe length separately. Values in table are for Intake OR Exhaust, not combined total. Both Intake and Exhaust must be same pipe size.

STANDARD TERMINATION AT ELEVATION 0 - 4500 ft.													
Pipe Size		2 in.				2-1/2 in.				3 in.			
Input		045	070	090	110	045	070	090	110	045	070	090	110
No. of 90° elbows used	1	76	61	39	19	110	95	63	38	132	132	113	113
	2	71	56	34	14	105	90	58	33	127	127	108	108
	3	66	51	29	N/A	100	85	53	28	122	122	103	103
	4	61	46	24	N/A	95	80	48	23	117	117	98	98
	5	56	41	19	N/A	90	75	43	18	112	112	93	93
	6	51	36	14	N/A	85	70	38	13	107	107	88	88
	7	46	31	N/A	N/A	80	65	33	N/A	102	102	83	83
	8	41	26	N/A	N/A	75	60	28	N/A	97	97	78	78
	9	36	21	N/A	N/A	70	55	23	N/A	92	92	73	73
	10	31	16	N/A	N/A	65	50	18	N/A	87	87	68	68
STANDARD TERMINATION AT ELEVATION 4501 - 10,00 ft.													
Pipe Size		2 in.				2-1/2 in.				3 in.			
Input		045	070	090	110	045	070	090	110	045	070	090	110
No. of 90° elbows used	1	76	61	39	N/A	110	95	63	38	132	132	113	113
	2	71	56	34	N/A	105	90	58	33	127	127	108	108
	3	66	51	29	N/A	100	85	53	28	122	122	103	103
	4	61	46	24	N/A	95	80	48	23	117	117	98	98
	5	56	41	19	N/A	90	75	43	18	112	112	93	93
	6	51	36	14	N/A	85	70	38	13	107	107	88	88
	7	46	31	N/A	N/A	80	65	33	N/A	102	102	83	83
	8	41	26	N/A	N/A	75	60	28	N/A	97	97	78	78
	9	36	21	N/A	N/A	70	55	23	N/A	92	92	73	73
	10	31	16	N/A	N/A	65	50	18	N/A	87	87	68	68
CONCENTRIC TERMINATION ELEVATION 0 - 4500 ft.													
Pipe Size		2 in.				2-1/2 in.				3 in.			
Input		045	070	090	110	045	070	090	110	045	070	090	110
No. of 90° elbows used	1	68	53	37	17	100	85	59	34	116	116	109	109
	2	63	48	32	12	95	80	54	29	111	111	104	104
	3	58	43	27	N/A	90	75	49	24	106	106	99	99
	4	53	38	22	N/A	85	70	44	19	101	101	94	94
	5	48	33	17	N/A	80	65	39	14	96	96	89	89
	6	43	28	12	N/A	75	60	34	N/A	91	91	84	84
	7	38	23	N/A	N/A	70	55	29	N/A	86	86	79	79
	8	33	18	N/A	N/A	65	50	24	N/A	81	81	74	74
	9	28	13	N/A	N/A	60	45	19	N/A	76	76	69	69
	10	23	N/A	N/A	N/A	55	40	14	N/A	71	71	64	64
CONCENTRIC TERMINATION ELEVATION 4500 - 10,000 ft.													
Pipe Size		2 in.				2-1/2 in.				3 in.			
Input		045	070	090	110	045	070	090	110	045	070	090	110
No. of 90° elbows used	1	68	53	37	N/A	100	85	59	34	116	116	109	109
	2	63	48	32	N/A	95	80	54	29	111	111	104	104
	3	58	43	27	N/A	90	75	49	24	106	106	99	99
	4	53	38	22	N/A	85	70	44	19	101	101	94	94
	5	48	33	17	N/A	80	65	39	14	96	96	89	89
	6	43	28	12	N/A	75	60	34	N/A	91	91	84	84
	7	38	23	N/A	N/A	70	55	29	N/A	86	86	79	79
	8	33	18	N/A	N/A	65	50	24	N/A	81	81	74	74
	9	28	13	N/A	N/A	60	45	19	N/A	76	76	69	69
	10	23	N/A	N/A	N/A	55	40	14	N/A	71	71	64	64

Gas Furnaces 92AF

Vent Lengths - Feet - Counterflow

NOTE - Size intake and exhaust pipe length separately. Values in table are for Intake OR Exhaust, not combined total. Both Intake and Exhaust must be same pipe size.

STANDARD TERMINATION AT ELEVATION 0 - 10,000 ft.										
Pipe Size		2 in.			2-1/2 in.			3 in.		
Input		045	070	090	045	070	090	045	070	090
No. of 90° elbows used	1	56	41	19	95	75	38	122	122	103
	2	51	36	14	90	70	33	117	117	98
	3	46	31	N/A	85	65	28	112	112	93
	4	41	26	N/A	80	60	23	107	107	88
	5	36	21	N/A	75	55	18	102	102	83
	6	31	16	N/A	70	50	13	97	97	78
	7	26	11	N/A	65	45	N/A	92	92	73
	8	21	N/A	N/A	60	40	N/A	87	87	68
	9	16	N/A	N/A	55	35	N/A	82	82	63
	10	11	N/A	N/A	50	30	N/A	77	77	58
CONCENTRIC TERMINATION ELEVATION 0 - 10,000 ft.										
Pipe Size		2 in.			2-1/2 in.			3 in.		
Input		045	070	090	045	070	090	045	070	090
No. of 90° elbows used	1	48	33	17	85	65	34	106	106	99
	2	43	28	12	80	60	29	101	101	94
	3	38	23	N/A	75	55	24	96	96	89
	4	33	18	N/A	70	50	19	91	91	84
	5	28	13	N/A	65	45	14	86	86	79
	6	23	N/A	N/A	60	40	N/A	81	81	74
	7	18	N/A	N/A	55	35	N/A	76	76	69
	8	13	N/A	N/A	50	30	N/A	71	71	64
	9	N/A	N/A	N/A	45	25	N/A	66	66	59
	10	N/A	N/A	N/A	40	20	N/A	61	61	54

Clearance to Combustibles (in.)

Sides	¹ 0
Rear	0
Top/Plenum	1
Front	0
Front (service/alcove)	24
Floor	² Combustible

NOTE – Air for combustion must conform to the methods outlined in the National Fuel Gas Code (NFPA 54/ANSI-Z223.1) or the National Standard of Canada CAN/CSA-B149.1 Natural Gas and Propane Installation Code”.

NOTE – In the U.S. flue sizing must conform to the methods outlined in the current National Fuel Gas Code (NFPA 54/ANSI-Z223.1) or applicable provisions of local building codes. In Canada flue sizing must conform to the methods outlined in National Standard of Canada CAN/CSA-B149.1.

¹ Allow proper clearances to accommodate condensate trap and vent pipe installation.

² Do not install the furnace directly on carpeting, tile, or other combustible materials other than wood flooring.

Gas Furnaces

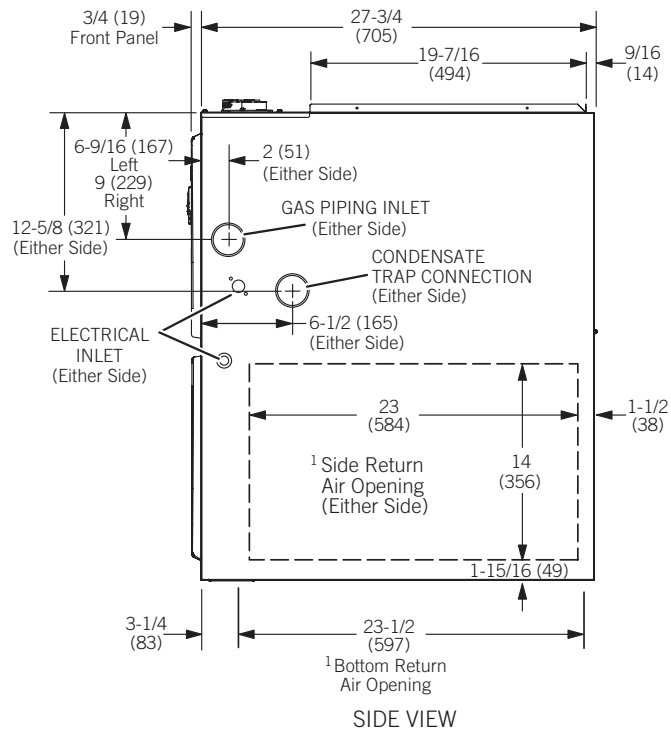
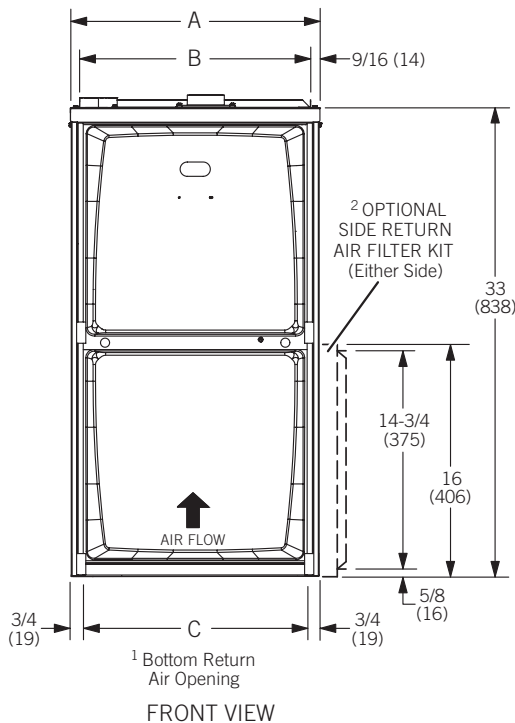
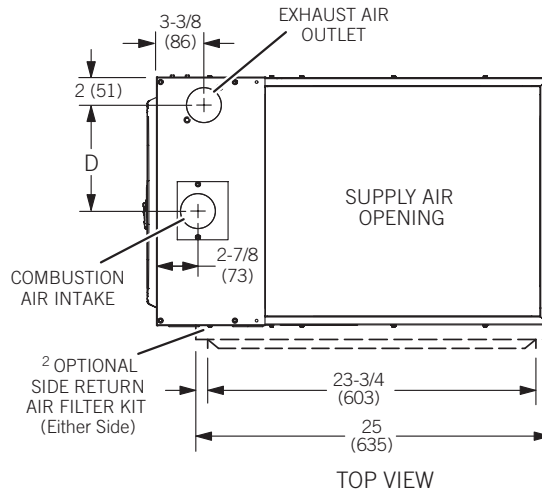
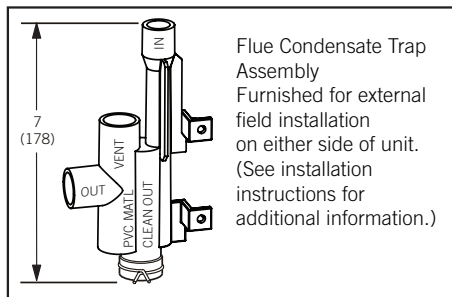
92AF

Dimensions - inches (mm) Upflow

¹ NOTE - 20C size units that require air volumes over 1800 cfm must have one of the following:

1. Single side return air with transition, to accommodate 20 x 25 x 1 in. cleanable air filter. Required to maintain proper air velocity.
 2. Single side return air with Optional Return Air Base
 3. Bottom return air.
 4. Return air from both sides.
 5. Bottom and one side return air.
- See Blower Performance Tables for additional information.

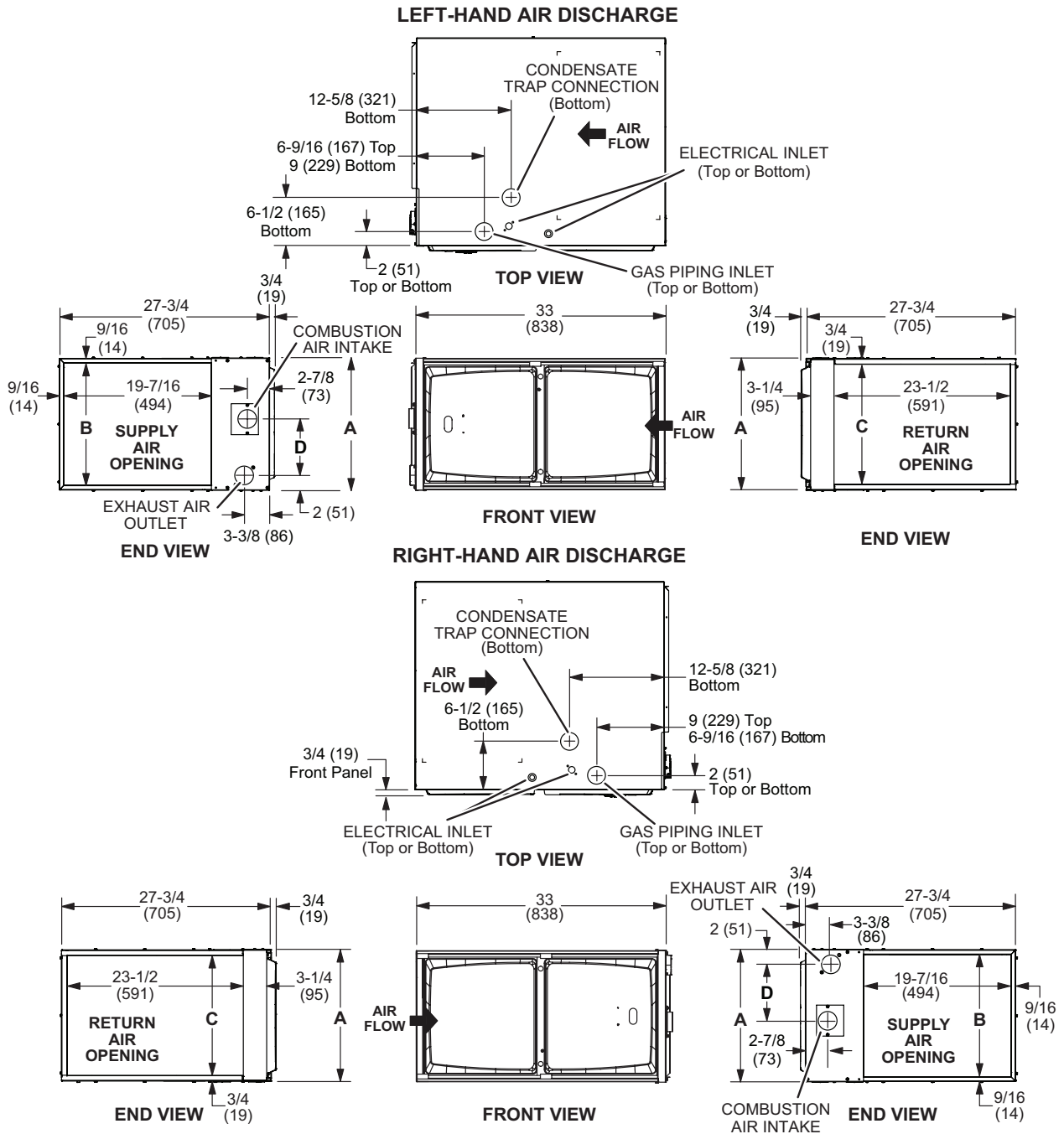
² Optional Side Return Air Filter Kit is not for use with the Optional Return Air Base.



Model No.	A		B		C		D	
	in.	mm	in.	mm	in.	mm	in.	mm
92AF1UH045P08B 92AF1UH045P12B 92AF1UH070P08B 92AF1UH070P12B	17-1/2	446	16-3/8	416	16	406	7-5/8	194
92AF1UH090P12C 92AF1UH090P16C 92AF1UH110P16C 92AF1UH110P20C	21	533	19-7/8	505	19-1/2	495	9-3/8	238

Gas Furnaces 92AF

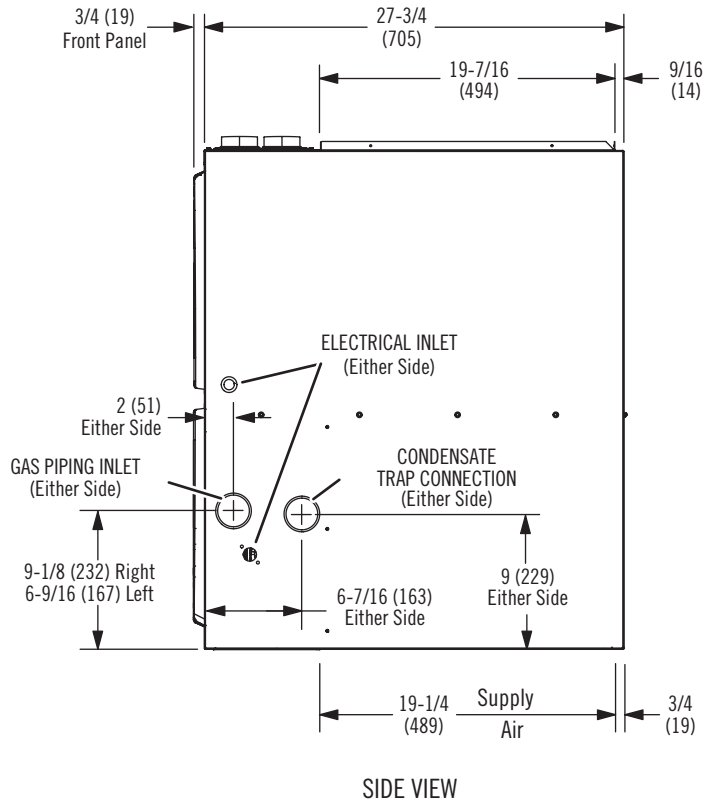
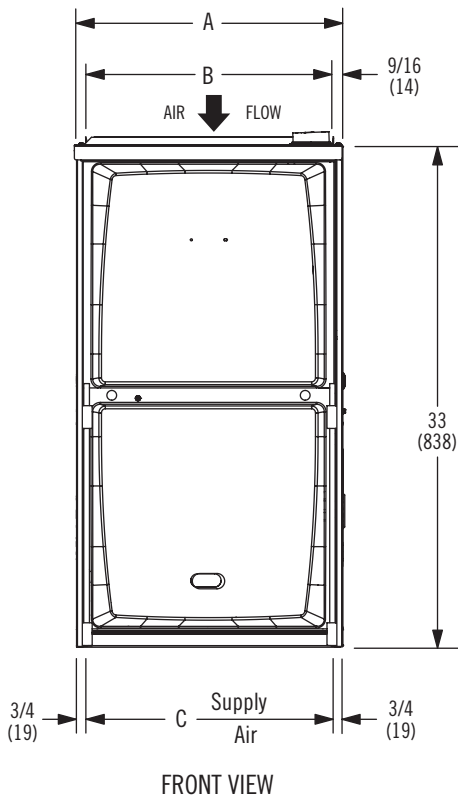
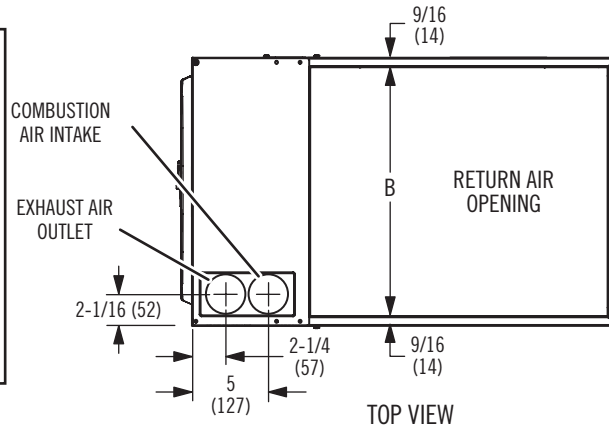
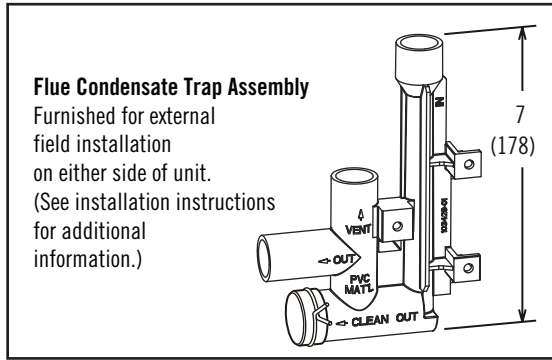
Dimensions - inches (mm) Horizontal



Model No.	A		B		C		D	
	in.	mm	in.	mm	in.	mm	in.	mm
92AF1UH045P08B 92AF1UH045P12B 92AF1UH070P08B 92AF1UH070P12B	17-1/2	446	16-3/8	416	16	406	7-5/8	194
92AF1UH090P12C 92AF1UH090P16C 92AF1UH110P16C 92AF1UH110P20C	21	533	19-7/8	505	19-1/2	495	9-3/8	238

Gas Furnaces 92AF

Dimensions - in. (mm) Counterflow



Model No.	A		B		C	
	in.	mm	in.	mm	in.	mm
92AF1DF045P12B	17-1/2	446	16-3/8	416	16	406
92AF1DF070P12B						
92AF1DF090P16C	21	533	19-7/8	505	19-1/2	495

Gas Furnaces 92AF

Revisions

Sections	Description of Change
Approvals	Added statements about South Coast Air Quality Management District (SCAQMD) and San Joaquin Valley Air Pollution Control District (SJVAPCD) rules for furnaces with more than 14 ng/J ratings.

California Only

If installed in South Coast Air Quality Management District (SCAQMD) only:

This furnace does not meet the SCAQMD Rule 1111 NO_x emission limit (14 ng/J), and thus is subject to a mitigation fee of up to \$450. This furnace is not eligible for the Clean Air Furnace Rebate Program:

www.CleanAirFurnaceRebate.com.

If installed in San Joaquin Valley Air Pollution Control District (SJVAPCD) only:

This furnace does not meet the SJVAPCD Rule 4905 NO_x emission limit (14 ng/J), and thus is subject to a mitigation fee of up to \$450.



1.800.982.2333
www.aireflo-hvac.com

210597 (09/18)

© Aire-Flo Heating and Cooling, 2018