



AFGP10B

Gas/Electric Packaged Unit



Features

- Shipped for horizontal applications; easily converted to downshot
- Side-by-side horizontal discharge
- Low-profile flue exhaust
- Direct-spark ignition system provides rapid, reliable warmth
- Quiet, efficient Copeland® compliant scroll compressors are safeguarded by internal pressure relief valves and inherent thermal protection
- Sensitive electrical components are protected by a unique slide-out door that provides easy access
- Electrical panels are pre-wired
- Service valve gauge ports are positioned for more access room
- Easy-to-read LED diagnostics simplifies troubleshooting
- Internal pressure relief valves and inherent thermal protection protect against unit failure
- Permanently lubricated condenser fan motor eliminates annual maintenance
- Condenser coil copper tubes with enhanced louvered fins provide maximum heat transfer

Efficiency:
10 SEER 80% AFUE

Warranty:
5-year limited—Compressor and other covered parts
10-year limited—crimped heat exchanger

Capacity:
2- to 5-ton cooling
50,000–125,000 Btu heating

AFGP10B Gas/Electric Packaged Unit

Unit Specifications

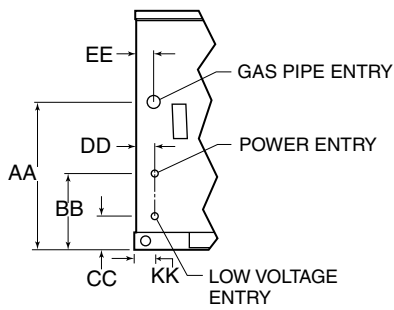
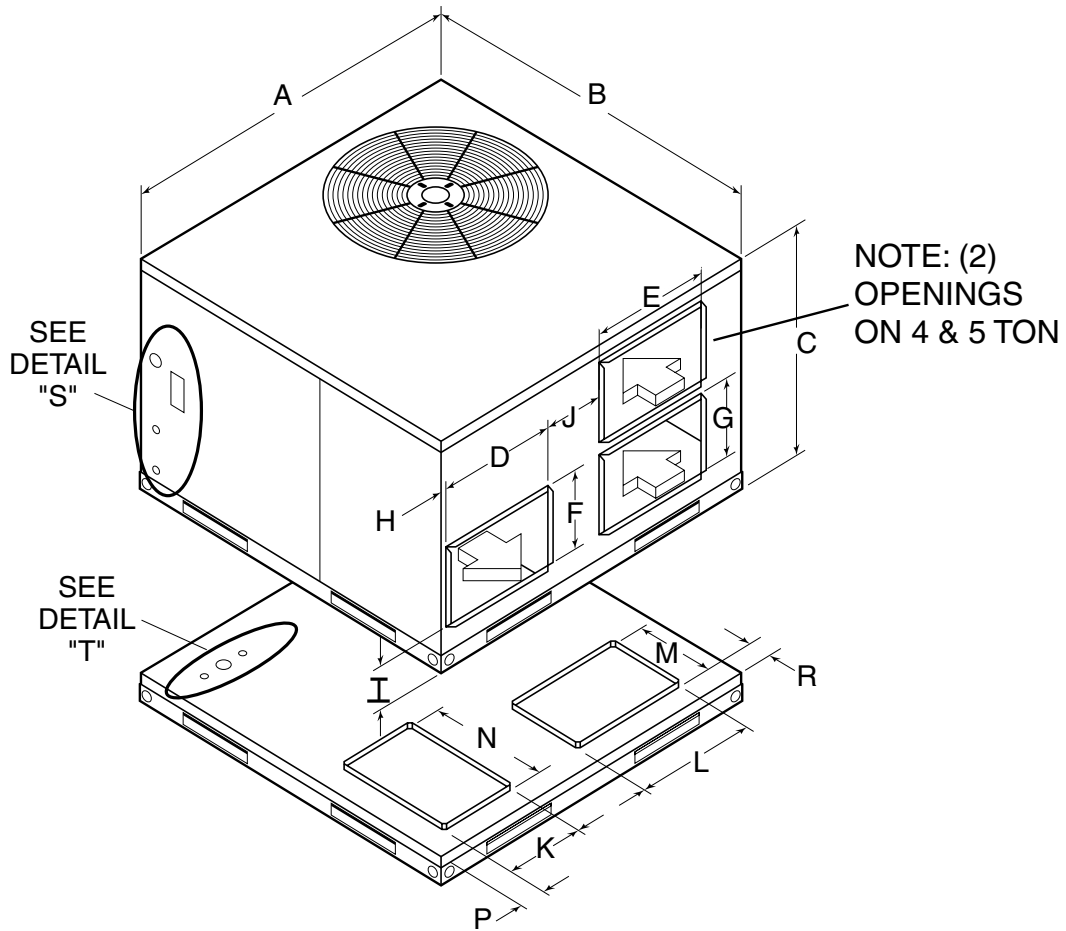
		AFGP10B24050	AFGP10B24075	AFGP10B30050	AFGP10B30075	AFGP10B36075	AFGP10B36100
Condenser Coil	Face Area (ft. ²)	8.96	8.96	8.96	8.96	8.96	8.96
	Face Area (m ²)	0.83	0.83	0.83	0.83	0.83	0.83
	No. of Rows	1	1	1	1	2	2
	Fins per Inch	22	22	22	22	20	20
Condenser Fan	Diameter (in.)	20"	20"	20"	20"	20"	20"
	No. of Blades	3	3	3	3	4	4
	RPM	1100	1100	1100	1100	1100	1100
	Indoor Blower Wheel (DxW)	10" x 9"	10" x 9"	10" x 9"	10" x 9"	10" x 9"	10" x 9"
	Refrigerant Charge, R-22 (oz.)	57	57	62	62	82	82
	Unit Weight (lbs.)	375	385	380	390	410	420
Dimensions	Cabinet Width (A)	47-11/16"	47-11/16"	47-11/16"	47-11/16"	47-11/16"	47-11/16"
	Cabinet Depth (B)	47-11/16"	47-11/16"	47-11/16"	47-11/16"	47-11/16"	47-11/16"
	Height (C)	30-1/16"	30-1/16"	30-1/16"	30-1/16"	30-1/16"	30-1/16"
	Supply Opening Hor. (D x F)	16-1/16 x 10-9/16	16-1/16 x 10-9/16	16-1/16 x 10-9/16	16-1/16 x 10-9/16	16-1/16 x 10-9/16	16-1/16 x 10-9/16
	Return Opening Hor. (E x G)	16-1/16 x 10-9/16	16-1/16 x 10-9/16	16-1/16 x 10-9/16	16-1/16 x 10-9/16	16-1/16 x 10-9/16	16-1/16 x 10-9/16
	Side of Unit to Supply Opening, Hor. (H)	3/4 "	3/4 "	3/4 "	3/4 "	3/4 "	3/4 "
	Bottom of Unit to Supply & Return Openings, Hor. (I)	5-7/16"	5-7/16"	5-7/16"	5-7/16"	5-7/16"	5-7/16"
	Supply to Return Openings, Hor. (J)	8"	8"	8"	8"	8"	8"
	Supply Opening Downshot (K x N)	10-9/16 x 16-1/16"	10-9/16 x 16-1/16"	10-9/16 x 16-1/16"	10-9/16 x 16-1/16"	10-9/16 x 16-1/16"	10-9/16 x 16-1/16"
	Return Opening Downshot (L x M)	16-1/16 x 10-9/16"	16-1/16 x 10-9/16"	16-1/16 x 10-9/16"	16-1/16 x 10-9/16"	16-1/16 x 10-9/16"	16-1/16 x 10-9/16"
	Side of Unit to Supply Opening Downshot (P)	3-5/8"	3-5/8"	3-5/8"	3-5/8"	3-5/8"	3-5/8"
	Back Edge to Supply & Return Downshot (R)	3-1/4"	3-1/4"	3-1/4"	3-1/4"	3-1/4"	3-1/4"
	Gas Pipe Entry From Bottom Hor. (AA)	18-9/16"	18-9/16"	18-9/16"	18-9/16"	18-9/16"	18-9/16"
	Power Entry From Bottom Hor. (BB)	9-1/2"	9-1/2"	9-1/2"	9-1/2"	9-1/2"	9-1/2"
	Low Voltage Entry From Bottom Hor. (CC)	4-1/4"	4-1/4"	4-1/4"	4-1/4"	4-1/4"	4-1/4"
	Electrical Entry From Front Hor. (DD)	2-1/2"	2-1/2"	2-1/2"	2-1/2"	2-1/2"	2-1/2"
	Gas Pipe Entry From Front Hor. (EE)	2-3/8"	2-3/8"	2-3/8"	2-3/8"	2-3/8"	2-3/8"
	Front Edge of Basepan Bottom Gas Electrical Entry (FF)	5"	5"	5"	5"	5"	5"
	Right Edge of Basepan Bottom Power Entry (GG)	5"	5"	5"	5"	5"	5"
	Right Edge of Basepan Bottom Gas Entry (HH)	8"	8"	8"	8"	8"	8"
	Right Edge of Basepan Bottom Low Voltage Entry (JJ)	11"	11"	11"	11"	11"	11"

AFGP10B Gas/Electric Packaged Unit

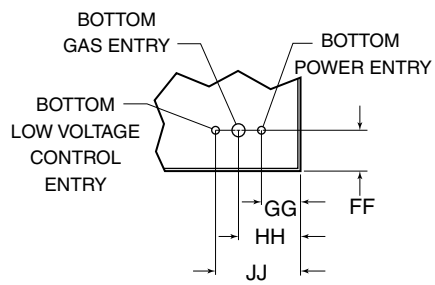
Unit Specifications

		AFGP10B42075	AFGP10B42100	AFGP10B48100	AFGP10B48125	AFGP10B60100	AFGP10B60125
Condenser Coil	Face Area (ft. ²)	8.96	8.96	11.97	11.97	11.97	11.97
	Face Area (m ²)	0.83	0.83	1.11	1.11	1.11	1.11
	No. of Rows	2	2	2	2	2	2
	Fins per Inch	20	20	20	20	20	20
Condenser Fan	Diameter (in.)	20"	20"	20"	22"	22"	22"
	No. of Blades	4	4	4	3	3	3
	RPM	1100	1100	1100	1100	1100	1100
	Indoor Blower Wheel (DxW)	10" x 9"	10" x 9"	12" x 9"	12" x 12"	12" x 9"	12" x 12"
	Refrigerant Charge, R-22 (oz.)	88	88	123	123	123	123
	Unit Weight (lbs.)	420	430	490	510	515	535
Dimensions	Cabinet Width (A)	47-11/16"	47-11/16"	55-7/16"	55-7/16"	55-7/16"	55-7/16"
	Cabinet Depth (B)	47-11/16"	47-11/16"	47-11/16"	47-11/16"	47-11/16"	47-11/16"
	Height (C)	30-1/16"	30-1/16"	36-1/16"	36-1/16"	36-1/16"	36-1/16"
	Supply Opening Hor. (D x F)	16-1/16 x 10-9/16	16-1/16 x 10-9/16	19-9/16 x 14-1/16	19-9/16 x 14-1/16	19-9/16 x 14-1/16	19-9/16 x 14-1/16
	Return Opening Hor. (E x G)	16-1/16 x 10-9/16	16-1/16 x 10-9/16	22-1/16 x 10-9/16 (2) Openings	22-1/16 x 10-9/16 (2) Openings	22-1/16 x 10-9/16 (2) Openings	22-1/16 x 10-9/16 (2) Openings
	Side of Unit to Supply Opening, Hor. (H)	3/4 "	3/4 "	3/4 "	3/4 "	3/4 "	3/4 "
	Bottom of Unit to Supply & Return Openings, Hor. (I)	5-7/16"	5-7/16"	5-7/16"	5-7/16"	5-7/16"	5-7/16"
	Supply to Return Openings, Hor. (J)	8"	8"	8"	8"	8"	8"
	Supply Opening Downshot (K x N)	10-9/16 x 16-1/16"	10-9/16 x 16-1/16"	14-1/16 x 19-9/16"	14-1/16 x 19-9/16"	14-1/16 x 19-9/16"	14-1/16 x 19-9/16"
	Return Opening Downshot (L x M)	16-1/16 x 10-9/16"	16-1/16 x 10-9/16"	22-1/16 x 10-9/16"	22-1/16 x 10-9/16"	22-1/16 x 10-9/16"	22-1/16 x 10-9/16"
	Side of Unit to Supply Opening Downshot (P)	3-5/8"	3-5/8"	3-5/8"	3-5/8"	3-5/8"	3-5/8"
	Back Edge to Supply & Return Downshot (R)	3-1/4"	3-1/4"	3-1/4"	3-1/4"	3-1/4"	3-1/4"
	Gas Pipe Entry From Bottom Hor. (AA)	18-9/16"	18-9/16"	24-9/16"	24-9/16"	24-9/16"	24-9/16"
	Power Entry From Bottom Hor. (BB)	9-1/2"	9-1/2"	15-1/2"	15-1/2"	15-1/2"	15-1/2"
	Low Voltage Entry From Bottom Hor. (CC)	4-1/4"	4-1/4"	4-1/4"	4-1/4"	4-1/4"	4-1/4"
	Electrical Entry From Front Hor. (DD)	2-1/2"	2-1/2"	2-1/2"	2-1/2"	2-1/2"	2-1/2"
	Gas Pipe Entry From Front Hor. (EE)	2-3/8"	2-3/8"	2-3/8"	2-3/8"	2-3/8"	2-3/8"
	Front Edge of Basepan Bottom Gas Electrical Entry (FF)	5"	5"	5"	5"	5"	5"
	Right Edge of Basepan Bottom Power Entry (GG)	5"	5"	5"	5"	5"	5"
	Right Edge of Basepan Bottom Gas Entry (HH)	8"	8"	8"	8"	8"	8"
Right Edge of Basepan Bottom Low Voltage Entry (JJ)	11"	11"	11"	11"	11"	11"	

AFGP10B Gas/Electric Packaged Unit



DETAIL "S"
SIDE VIEW FROM RIGHT SIDE OF UNIT



DETAIL "T"
DETAIL VIEW FROM BASE OF UNIT

AFGP10B Gas/Electric Packaged Unit

Electrical Data

		AFGP10B24050	AFGP10B24075	AFGP10B30050	AFGP10B30075	AFGP10B36075	AFGP10B36100
Unit	Rated Voltage (Vac)	208/230	208/230	208/230	208/230	208/230	208/230
	Phase	1	1	1	1	1	1
	Frequency (Hz.)	60	60	60	60	60	60
	Approved Voltage Range	197-253	197-253	197-253	197-253	197-253	197-253
	Minimum Circuit Amps	16.4	16.4	22.2	22.2	24.1	24.1
	Maximum Fuse ¹	25	25	30	30	35	35
Com-pressor	Rated Load Amps	10.9	10.9	15.3	15.3	16.1	16.1
	Locked Rotor Amps	56	56	75	75	82	82
Outdoor Fan	Full Load Amps	0.7	0.7	0.7	0.7	1.7	1.7
	Horsepower	1/10	1/10	1/10	1/10	1/4	1/4
Indoor Blower	Full Load Amps	3.9	3.9	3.9	3.9	3.9	3.9
	Horsepower	1/2	1/2	1/2	1/2	1/2	1/2
Producer Motor	Full Load Amps	0.7	0.7	0.7	0.7	0.7	0.7
	Horsepower	1/25	1/25	1/25	1/25	1/25	1/25

		AFGP10B42075	AFGP10B42100	AFGP10B48100	AFGP10B48125	AFGP10B60100	AFGP10B60125
Unit	Rated Voltage (Vac)	208/230	208/230	208/230	208/230	208/230	208/230
	Phase	1	1	1	1	1	1
	Frequency (Hz.)	60	60	60	60	60	60
	Approved Voltage Range	197-253	197-253	197-253	197-253	197-253	197-253
	Minimum Circuit Amps	30	30	32.3	32.3	38.7	38.7
	Maximum Fuse ¹	50	50	50	50	60	60
Com-pressor	Rated Load Amps	20.4	20.4	20.4	20.4	28.6	28.6
	Locked Rotor Amps	102	102	102	102	150	150
Outdoor Fan	Full Load Amps	1.7	1.7	2.0	2.0	2.0	2.0
	Horsepower	1/4	1/4	1/3	1/3	1/3	1/3
Indoor Blower	Full Load Amps	3.9	3.9	5.0	5.0	5.0	5.0
	Horsepower	1/2	1/2	0.9	0.9	0.9	0.9
Producer Motor	Full Load Amps	0.7	0.7	0.7	0.7	0.7	0.7
	Horsepower	1/25	1/25	1/25	1/25	1/25	1/25

¹ Time delay fue/HACR Breaker

AFGP10B Gas/Electric Packaged Unit

Performance Data

		AFGP10B24050	AFGP10B24075	AFGP10B30050	AFGP10B30075	AFGP10B36075	AFGP10B36100
Cooling	Cooling Capacity ¹	23,400	23,400	28,600	28,600	34,200	34,200
	SEER ¹	10.00	10.00	10.00	10.00	10.00	10.00
	EER	9.10	9.10	8.9	8.9	9.00	9.00
	S/T	0.71	0.71	0.72	0.72	0.72	0.72
	CFM	850	850	1050	1050	1200	1200
	Speed Tap	Medium	Medium	Medium	Medium	Medium	Medium
Heating	Input (Btuh) ¹	50,000	75,000	50,000	75,000	75,000	100,000
	Output (Btuh) ¹	40,000	60,000	40,000	60,000	60,000	80,000
	AFUE	80%	80%	80%	80%	80%	80%
	Temp. Rise Range (°F)	45-85	45-85	45-85	45-85	45-85	45-85

		AFGP10B42075	AFGP10B42100	AFGP10B48100	AFGP10B48125	AFGP10B60100	AFGP10B60125
Cooling	Cooling Capacity ¹	40,000	40,000	45,500	45,500	58,000	58,000
	SEER ¹	10.00	10.00	10.00	10.00	10.00	10.00
	EER	8.90	8.90	9.00	9.00	8.90	8.90
	S/T	0.71	0.71	0.71	0.71	0.71	0.71
	CFM	1350	1350	1650	1650	1900	1900
	Speed Tap	Medium	Medium	Medium	Medium	High	High
Heating	Input (Btuh) ¹	75,000	100,000	100,000	125,000	100,000	125,000
	Output (Btuh) ¹	60,000	80,000	80,000	100,000	80,000	100,000
	AFUE	80%	80%	80%	80%	80%	80%
	Temp. Rise Range (°F)	45-85	45-85	45-85	45-85	45-85	45-85

¹ BX Low-NOx models heating input and output are reduced by 12%.

Airflow Data

Airflow (CFM) @ external static pressure (in w.c.)	AFGP10B24			AFGP10B30			AFGP10B36		
	Low	Medium	High	Low	Medium	High	Low	Medium	High
0.20	780	1020	1330	800	1040	1360	1450	1540	1610
0.40	740	940	1220	770	970	1250	1340	1420	1490
0.60	660	850	1080	690	880	1110	1190	1260	1330
0.80	580	780	920	600	780	960	960	1000	1050

Airflow (CFM) @ external static pressure (in w.c.)	AFGP10B42			AFGP10B48			AFGP10B60		
	Low	Medium	High	Low	Medium	High	Low	Medium	High
0.20	1450	1540	1610	1510	1650	2100	1650	1750	2280
0.40	1340	1420	1490	1460	1610	2020	1590	1700	2160
0.60	1190	1260	1340	1420	1560	1920	1550	1650	2050
0.80	960	1000	1050	1330	1450	1810	1480	1540	1930

AFGP10B Gas/Electric Packaged Unit

Accessories

	AFGP10B24050	AFGP10B24075	AFGP10B30050	AFGP10B30075	AFGP10B36075	AFGP10B36100
High Pressure Switch	20442501	20442501	20442501	20442501	20442501	20442501
Low Pressure Switch	20442502	20442502	20442502	20442502	20442502	20442502
Short Cycle Protection	20442601	20442601	20442601	20442601	20442601	20442601
Hard Start Kit	20442702	20442702	20442702	20442702	20442708	20442708
Crank Case Heater Kit	20442801	20442801	20442801	20442801	20442801	20442801
Sound Blanket	20442901	20442901	20442901	20442901	20442901	20442901
Low Ambient Kit**	20442504	20442504	20442504	20442504	20442504	20442504
LP Conversion Kit**	20490601	20490601	20490601	20490601	20490601	20490601
High Altitude Kit**	20490701	20490701	20490701	20490701	20490701	20490701
Roof Curb	20490001	20490001	20490001	20490001	20490001	20490001
Manual Outside Air Damper	20490101	20490101	20490101	20490101	20490101	20490101
Motorized Outside Air Damper	20490201	20490201	20490201	20490201	20490201	20490201
Economizer	20490301	20490301	20490301	20490301	20490301	20490301
Round Duct Adapter	20490401	20490401	20490401	20490401	20490401	20490401
Filter Rack	20490501	20490501	20490501	20490501	20490501	20490501

	AFGP10B42075	AFGP10B42100	AFGP10B48100	AFGP10B48125	AFGP10B60100	AFGP10B60125
High Pressure Switch	20442501	20442501	20442501	20442501	20442501	20442501
Low Pressure Switch	20442502	20442502	20442502	20442502	20442502	20442502
Short Cycle Protection	20442601	20442601	20442601	20442601	20442601	20442601
Hard Start Kit	20442705	20442705	20442705	20442705	20442706	20442706
Crank Case Heater Kit	20442801	20442801	20442801	20442801	20442802	20442802
Sound Blanket	20442901	20442901	20442901	20442901	20442902	20442902
Low Ambient Kit**	20442504	20442504	20442504	20442504	20442504	20442504
LP Conversion Kit**	20490601	20490601	20490601	20490601	20490601	20490601
High Altitude Kit**	20490702	20490702	20490702	20490702	20490702	20490702
Roof Curb	20490001	20490001	20490002	20490002	20490002	20490002
Manual Outside Air Damper	20490101	20490101	20490102	20490102	20490102	20490102
Motorized Outside Air Damper	20490201	20490201	20490202	20490202	20490202	20490202
Economizer	20490301	20490301	20490302	20490302	20490302	20490302
Round Duct Adapter	20490401	20490401	20490402	20490402	20490402	20490402
Filter Rack	20490501	20490501	20490502	20490502	20490502	20490502

**These models are not for BX



2100 Lake Park Boulevard
Richardson, TX 75080
1.800.982.2333

www.aireflo-hvac.com



All models 208-230 volt/1-phase/60 Hz. 36/48/60 models also available in 208-230 volt/
3-phase/60 Hz. Certified in accordance with the ARI standard 210/240 certification program,
which is based on ARI standard 210/240.

47M26 (9/04)

© Copyright Lennox Industries, Inc., 2004

PC39303