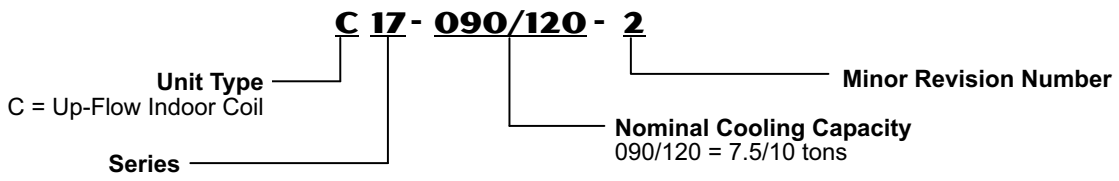




**7.5 and 10 Tons**

**MODEL NUMBER IDENTIFICATION**



**FEATURES**

**CONTENTS**

Air Resistance .....	Page 2
Dimensions .....	Page 3
Features .....	Page 1
Guide Specifications .....	Page 3
Model Number Identification .....	Page 1
Specifications .....	Page 2

**WARRANTY**

**All covered components - one year.**  
Refer to Lennox Equipment Limited Warranty certificate included with unit for specific details.

**APPLICATIONS**

Split coil design with two expansion valves and distribution systems for two-stage control.  
Applicable to one or two single stage air conditioning units.  
See bulletins in section Air Conditioners for indoor coil applications and cooling capacities.

**FULLY TESTED**

Tested with matching air conditioners.  
Rated in accordance with ARI Standard 210/240-2006 conditions and DOE test procedures.  
Air resistance tests from Lennox air test chamber.

**COIL**

Durable copper tubing construction.  
Ripple-edged aluminum fins.  
Lanced fins provide maximum exposure of fin surface to air stream.  
Rifled tubing provides superior heat transfer.  
Twin coil construction assembled in "A" configuration for large surface area.  
Corrosion resistant drain pan with dual mpt drain connections external to cabinet.  
Factory installed expansion valves internal to unit cabinet.  
Sweat connections.

**CABINET**

Heavy gauge steel cabinet.  
Fully insulated with thick fiberglass insulation.  
Baked-on powder paint finish.  
Refrigerant lines stubbed outside of cabinet.  
Furnished suction and liquid line adapters are used when coil is matched to a single air conditioning unit.

## SPECIFICATIONS

Model No.		C17-090/120
Line Connections	Suction line - in. sweat	<sup>1</sup> (2) 7/8
	Liquid line - in. sweat	<sup>2</sup> (2) 3/8
	Condensate drain (NPT) - in.	(2) 3/4
Indoor Coil	Net face area - sq. ft.	12.5
	Tube diameter - in.	3/8
	No. of rows	4
	Fins per inch	14
Refrigerant		R-22
Shipping weight - lbs. 1 package		230

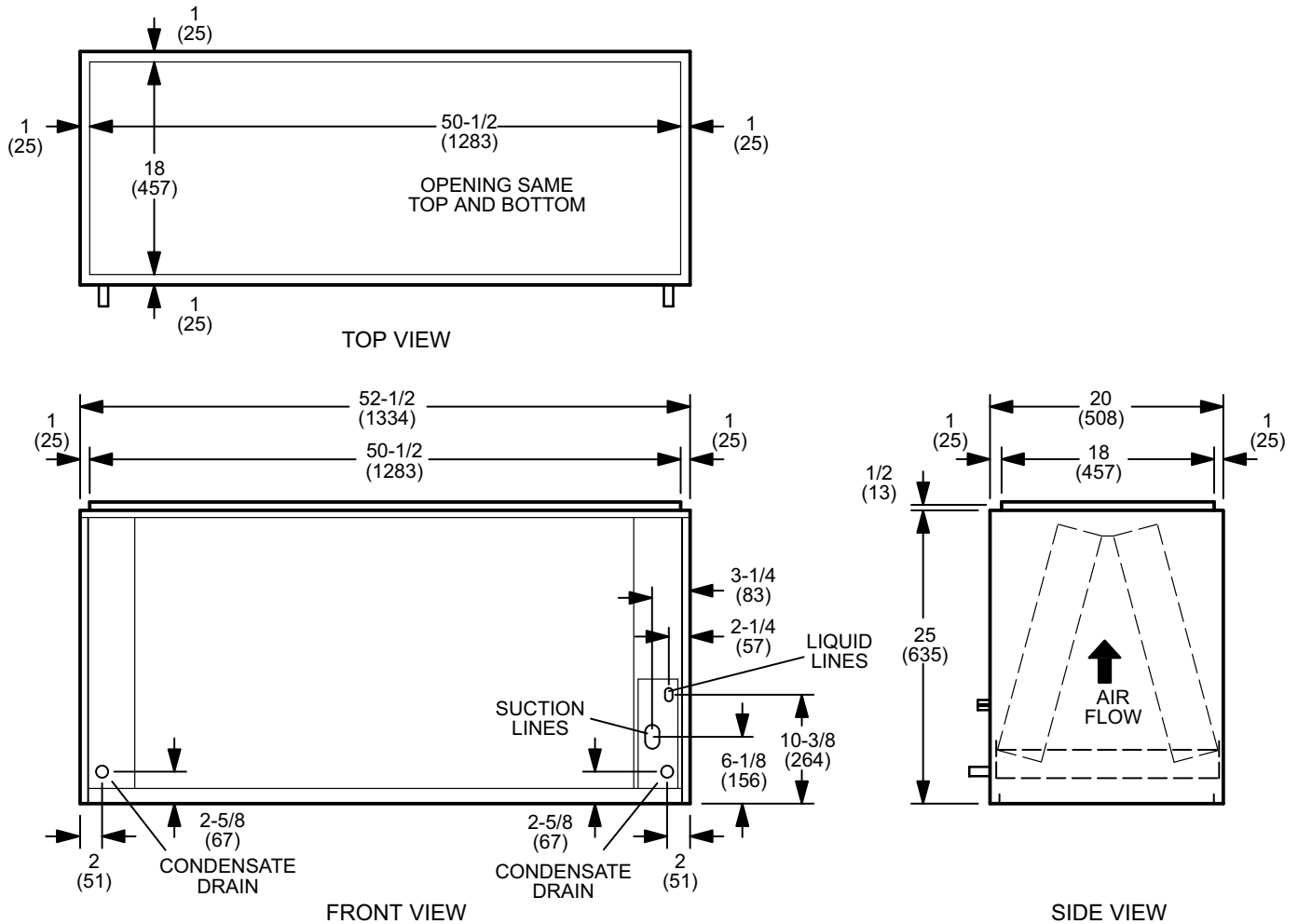
<sup>1</sup> 7/8 x 7/8 to 1-3/8 in. "Y" adapter furnished with coil for use with single air conditioning unit.

<sup>2</sup> 3/8 x 3/8 to 3/8 in. "Y" adapter furnished with coil for use with single air conditioning unit.

## AIR RESISTANCE

Air Volume - cfm	Total Resistance Dry Coil - in. w.g.
2400	0.14
2600	0.16
2800	0.19
3000	0.22
3200	0.24
3400	0.27
3600	0.30
3800	0.33
4000	0.36
4200	0.38
4400	0.42
4600	0.45
4800	0.48
5000	0.51

## DIMENSIONS - IN. (MM)



## GUIDE SPECIFICATIONS

Prepared for the guidance of architects, consulting engineers and mechanical contractors.

Furnish and install add-on DX evaporator unit. The evaporator unit shall be the product of a firm regularly engaged in the manufacture of cooling/heating equipment. The manufacturer shall have parts and service available throughout The United States and Canada.

The installed weight shall not be more than . . . . . lbs. (kg). Entire unit shall have a width of not more than . . . . . inches (mm), a depth of not more than . . . . . inches (mm), and an overall height of not more than . . . . . inches (mm) with up-flow air discharge. The equipment shall be factory assembled, piped and ready for field installation.

The total certified cooling capacity of coils shall not be less than . . . . . Btuh (kW) with an evaporator air volume of . . . . . cfm (L/s) and, entering wet bulb temperature of . . . . . °F (°C) and . . . . . °F (°C) coil refrigerant temperature. Coil area shall not be less than . . . . . sq. ft. (m<sup>2</sup>).

The coils shall be non-ferrous construction with aluminum fins machine fitted to copper tubes and shall be dual circuit with each circuit having an expansion valve. Coils shall be factory pressure leak tested. Refrigerant lines and dual drain connections shall be accessible external to the cabinet. Coil cabinet shall be constructed of cold rolled steel, lined with fiberglass insulation and have a finish coat of baked-on enamel.



Visit us at [www.lennox.com](http://www.lennox.com)  
For the latest technical information, [www.lennoxcommercial.com](http://www.lennoxcommercial.com)  
Contact us at 1-800-9-LENNOX



NOTE - Due to Lennox' ongoing commitment to quality, Specifications, Ratings and Dimensions subject to change without notice and without incurring liability. Improper installation, adjustment, alteration, service or maintenance can cause property damage or personal injury. Installation and service must be performed by a qualified installer and servicing agency.

©2008 Lennox Industries Inc.