



EDA
DAVE LENNOX SIGNATURE® COLLECTION
Humiditrol® Whole-Home Dehumidification System

**RESIDENTIAL
PRODUCT SPECIFICATIONS**

Bulletin No. 210430
April 2020
Supersedes April 2019



NOTE - EDA is not applicable to variable-capacity outdoor units!

MODEL NUMBER IDENTIFICATION

EDA - 036 C

Model Number
EDA = Enhanced Dehumidification Accessory
(Whole Home Dehumidification System)

Nominal Capacity
024 = 2 tons
036 = 3 tons
060 = 5 tons

¹ Cabinet Width
B = 17-1/2 in.
C = 21 in.
D = 24-1/2 in.

¹ EDA letter designation in the model number will physically match gas furnaces with the same letter designation in their model number.

FEATURE HIGHLIGHTS

1. Heavy Gauge Steel Cabinet
2. Low Voltage Electrical Inlet
3. Fully Insulated Cabinet
4. Dehumidification Coil
5. Sweat Connections
6. Dual Refrigerant Diverter Valves
7. 3-Way Diverter Valve Actuator



CONTENTS

Air Resistance	9
Approvals And Warranty	3
Controls - Order Separately	8
Dimensions	10
Eda Match-Ups - Air Conditioners	14
Eda Match-Ups - Heat Pumps	19
Features	3
Installation Configurations	12
Required Components - Order Separately	8
Sequence Of Operation	6
Specifications	8
System Decision Tree	13
Typical Installation	11

APPROVALS AND WARRANTY

APPROVALS

- Units are CSA certified according to UL-207 and CSA C22.2 No. 14.3 standards
- ISO 9001 Registered Manufacturing Quality System

WARRANTY

- All covered components:
 - Limited five years in residential installations
 - Limited one year in non-residential installations

NOTE - Refer to Lennox Equipment Limited Warranty certificate included with unit for specific details.

NOTE - Lennox warranties do not cover damage or defect resulting from operation with system components (indoor unit, outdoor unit and refrigerant control devices) which do not match or meet the specifications recommended by Lennox. This unit is intended to operate with specific furnaces and air handlers only. See System Decision Tree on page 12.

FEATURES

APPLICATIONS

NOTE - The Humiditrol® Whole Home Dehumidification System is not applicable to variable-capacity outdoor units.

- The Humiditrol® Whole Home Dehumidification System is designed for use with Lennox R-410A outdoor unit expansion valve systems only that are matched with specific furnaces or air handlers
- See System Decision Tree on page 13 for available matches
- For indoor installations in either upflow or horizontal applications only
- Height, space and air flow restrictions or the unit's stability in a stacked configuration will limit the use of downflow applications

NOTE - Refer to Installation Instructions supplement "Installing Humiditrol® EDA Unit in Downflow Configuration" for more details

NOTE - Sensible to Total Ratios are not available for downflow applications.

OVERVIEW

- The EDA unit is installed in an HVAC system downstream from the indoor coil or air handler
- In dehumidification mode, the coil becomes an extension of the outdoor coil and rejects heat into the indoor air stream
- This dehumidification mode allows significantly improved control of the humidity in the conditioned space without overcooling the space
- The EDA unit includes a set of 3-way diverter valves which route refrigerant through the EDA coil (Dehumidification ON), or which cause the refrigerant to bypass the EDA coil (Dehumidification OFF)

1 CABINET

- Low-profile allows easy installation in upflow or horizontal applications
- Heavy-gauge, cold rolled steel construction
- Pre-painted cabinet finish

- Flanges provided on supply air opening for ease of plenum connection
- Slots on perimeter of inlet opening help facilitate secure connection to indoor coil / air handler flanges

2 • Low voltage electrical inlet (for refrigerant valve actuator) provided on front of cabinet

3 • Fully insulated with foil faced insulation

COMPONENTS

4 Dehumidification Coil

- Durable copper tubing
- Ripple-edged aluminum fins
- Lanced fins provide maximum exposure of fin surface to air stream
- Rifled tubing provides superior refrigerant heat transfer
- Twin coil construction assembled in an A" configuration for large surface area (036C and 060D models)
- Single slab coil construction (024B model)

5 • Sweat connections

- High pressure testing insures leakproof construction

Combination Check/Flow Limiting Piston

- Furnished with unit for field installation on the EDA unit
- See dimension drawing
- Prevents refrigerant from flowing into the inactive components when the EDA coil is inactive

6 Dual Refrigerant Diverter Valves

- Heavy duty valves control refrigerant flow depending on mode

7 3-Way Diverter Valve Actuator

- Controls operation of refrigerant valves during EDA operation

• 24VAC

- Three position actuator shaft for maintenance - Cooling, Evacuate or Bypass

Outdoor Fan Relay and Wiring Harness

- Required when EDA is used with outdoor units with multi-speed outdoor fans

FEATURES

CONTROLS

Optional Accessories

iComfort® S30 Ultra-Smart Wi-Fi Thermostat (part of the iComfort® Residential Communicating Control System)

- Recognizes and connects to all iComfort® Communicating products to automatically configure and control the heating/cooling system (based on user-specified settings) for the highest level of comfort, performance and efficiency
- Recognizes model and serial number information for iComfort® Communicating products to simplify system setup
- Wi-Fi remote temperature monitoring and adjustment through a home wireless network for desktop PCs, laptops and apps for smartphones or tablets
- Service alerts and reminders sent via text message or e-mail
- Smart home automation compatible with Apple HomeKit™, Amazon Alexa®, Google Assistant and IFTTT
- Dealer Dashboard features online real-time monitoring of installed iComfort® Communicating systems
- Simple easy-to-use touchscreen allows complete system configuration
- Scheduled maintenance alerts, system warnings and troubleshooting are also displayed on thermostat screen
- Easy to read 7 inch high definition color display (measured diagonally)
- Conventional outdoor units (not iComfort® Communicating) can easily be added and controlled by the iComfort® S30 Thermostat
- Installer setup screens allow quick and simple system configuration without a manual, Installer can also run tests on complete system or individual components for easy maintenance and troubleshooting
- Serial communications bus (RSBus), with less wiring than a conventional heating/cooling system, allows system communication
- Uses 4-wire, 18-gauge standard thermostat wiring
- High Definition Color Display, Mag-Mount, Smart Hub Controller, wallplate (for retrofit installations) furnished for easy installation
- See the iComfort® S30 Thermostat Product Specifications bulletin for more information



iComfort® Communicating Equipment (Indoor and Outdoor Units only)

NOTE - An iComfort® Communicating indoor unit (furnace or air handler) is required for proper operation of the iComfort Communicating Thermostat with a conventional outdoor unit.

NOTE - The Humiditrol® Enhanced Dehumidification Accessory is not iComfort® Communicating but can easily be added and controlled by the iComfort® Thermostat. Dehumidify settings are adjustable from 40 to 60% relative humidity (RH).

iComfort® E30 Smart Wi-Fi Thermostat

- Wi-Fi enabled, electronic 7-day, universal, multi-stage, programmable, touchscreen thermostat
- 3 Heat/2 Cool
- Auto-changeover
- Controls dehumidification during cooling mode and humidification during heating mode
- Offers enhanced capabilities including humidification / dehumidification / dewpoint measurement and control, Humiditrol® control, and equipment maintenance reminders
- Easy to read 7 in. color touchscreen (measured diagonally)
- LCD display with backlight shows the current and set temperature, time, inside relative humidity, system status (operating mode and schedules) and outside temperature (optional outdoor sensor required)
- Smooth Setback Recovery starts system early to achieve setpoint at start of program period
- Compressor short-cycle protection (5 minutes)
- Up to four separate schedules are available plus Schedule IQ™
- One-Touch Away Mode - A quick and easy way to set the cooling and heating setpoints while away
- Smart Away™ - Uses geo-fencing technology to determine when the homeowner is within a predetermined distance from the home to operate the system when leaving, away and arriving
- Wi-Fi remote monitoring and adjustment through a home wireless network for desktop PCs, laptops and apps for smartphones or tablets
- Smart home automation compatible with Apple HomeKit™, Amazon Alexa®, Google Assistant and IFTTT
- High Definition Color Display, Mag-Mount, Smart Hub Controller, wallplate (for retrofit installations) furnished for easy installation
- See the iComfort® E30 Smart Wi-Fi Thermostat Product Specifications bulletin for more information



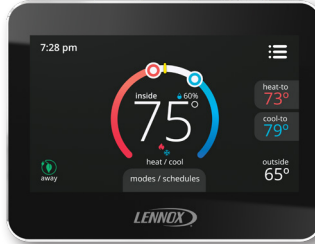
FEATURES

CONTROLS (continued)

Optional Accessories (continued)

ComfortSense® 7500 Touchscreen Thermostat

- Electronic 7-day, universal, multi-stage, programmable, touchscreen thermostat
- 4 Heat/2 Cool
- Auto-changeover.
- Dual-fuel control with optional outdoor sensor
- Controls dehumidification during cooling mode and humidification during heating mode
- Offers enhanced capabilities including humidification / dehumidification / dewpoint measurement and control, Humiditrol® control, and equipment maintenance reminders
- Easy-to-use, menu driven thermostat with a back-lit, LCD touchscreen
- See the ComfortSense® 7500 Thermostat Product Specifications bulletin in the Controls section for more information



ComfortSense® 7500 Commercial 7-Day Programmable Thermostat (COSTAT06FF2L)

- Electronic 7-day, universal, multi-stage, programmable, touchscreen thermostat
- 4 Heat/2 Cool
- Remote Indoor Temperature Sensing with Averaging
- Outside or Discharge Air Temperature Display
- Occupancy Scheduling with Economizer Relay Control
- Away mode
- Offers enhanced capabilities including humidification / dehumidification / dewpoint measurement and control, Humiditrol® control, and notifications/reminders
- Performance reports
- Economizer relay control
- Easy-to-use, menu driven thermostat with a back-lit, LCD touchscreen
- See the ComfortSense® 7500 Commercial Thermostat Product Specifications bulletin in the Controls section for more information



Remote Outdoor Temperature Sensor

- Used with the iComfort® Communicating Thermostats, iComfort E30, iComfort M30 and ComfortSense® 7500 thermostats
- When installed outdoors, sensor allows thermostat to display outdoor temperature



NOTE - Sensor is required for Humiditrol® applications.

NOTE - The outdoor sensor is furnished as standard with iComfort® Communicating outdoor units, optional for conventional units.

REQUIRED COMPONENTS

Insulation and Piping Kit

- Kit includes all necessary piping, fittings and insulation required for EDA installation

NOTE - Some model match-ups require a charge compensator to maintain the proper amount of refrigerant circulating in the system. The compensator stores excess refrigerant when the EDA coil is active and returns it to the system during normal cooling or heating operations. When the EDA coil is active, less charge is required to obtain the proper amount of subcooling because of the additional coil surface and the cooler air which passes over the EDA.

- Charge compensator and related piping and insulation is furnished with certain Insulation and Piping Kits depending on the system match-up

Relay Kit

- Required when use with CBA27UHE air handlers

Transformer

- 75VA, 24VAC indoor unit transformer is required when EDA unit is installed with a two-stage heat pump system

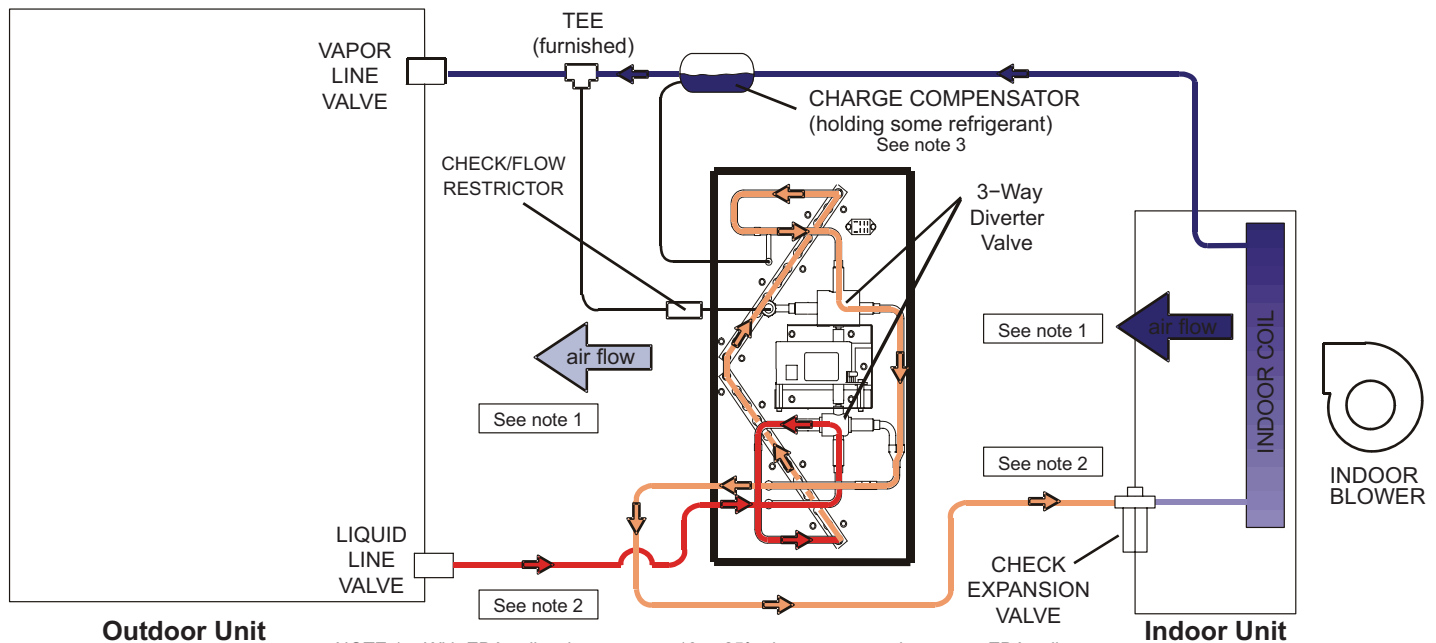
SEQUENCE OF OPERATION

Cooling Cycle With EDA Active

- Dehumidification mode begins when the room thermostat cooling demand has been satisfied but the dehumidification setting has not been satisfied
- The room thermostat sends a signal to the EDA unit's diverter valve actuator to begin operating in the dehumidification mode
- Refrigerant from the outdoor unit enters the EDA unit, passes through the first 3-way diverter valve and then enters the EDA coil
- There, heat from the warm refrigerant is rejected into the indoor air stream
- The refrigerant leaves the coil, passes through the second 3-way diverter valve and into the indoor coil expansion valve in a highly subcooled state
- During dehumidification, the indoor air blower (and multi-speed outdoor fan, if used) operate at a lower air volume
- The warm refrigerant entering the EDA unit from the outdoor unit will be subcooled in the EDA coil and enter the expansion valve at a lower-than-normal temperature
- Liquid temperatures can be in the 65 to 70°F range, with a 10 to 40°F temperature drop through the EDA coil

- The air temperature leaving the indoor coil and entering the EDA coil will be normal for the reduced airflow, but will be warmed as it passes over the EDA coil
- Air temperature rise across the EDA can be from 10 to 25°F, depending on the operating ambient and air-conditioned space conditions
- If the cooling demand has been satisfied, but a dehumidify demand still exists and the room temperature is not more than 2° below the setpoint, the blower will operate at reduced airflow while the compressor operates on 2nd stage cooling (two-stage systems only)
- When outdoor ambient temperatures reach 95°, the system runtime requirements are high and dehumidification requirements are met without activating the dehumidification mode
- By design the system, which is controlled by a ComfortSense® 7500 thermostat or an iComfort® Communicating thermostat, will not allow operation in the dehumidification mode when outdoor temperatures exceed 95°
- The system will operate more efficiently and will avoid unfavorable operating conditions
- When operating in normal cooling (or heat pump heating) mode, all temperatures and pressures will be the same as a standard heating/cooling system

Cooling Cycle With EDA Active

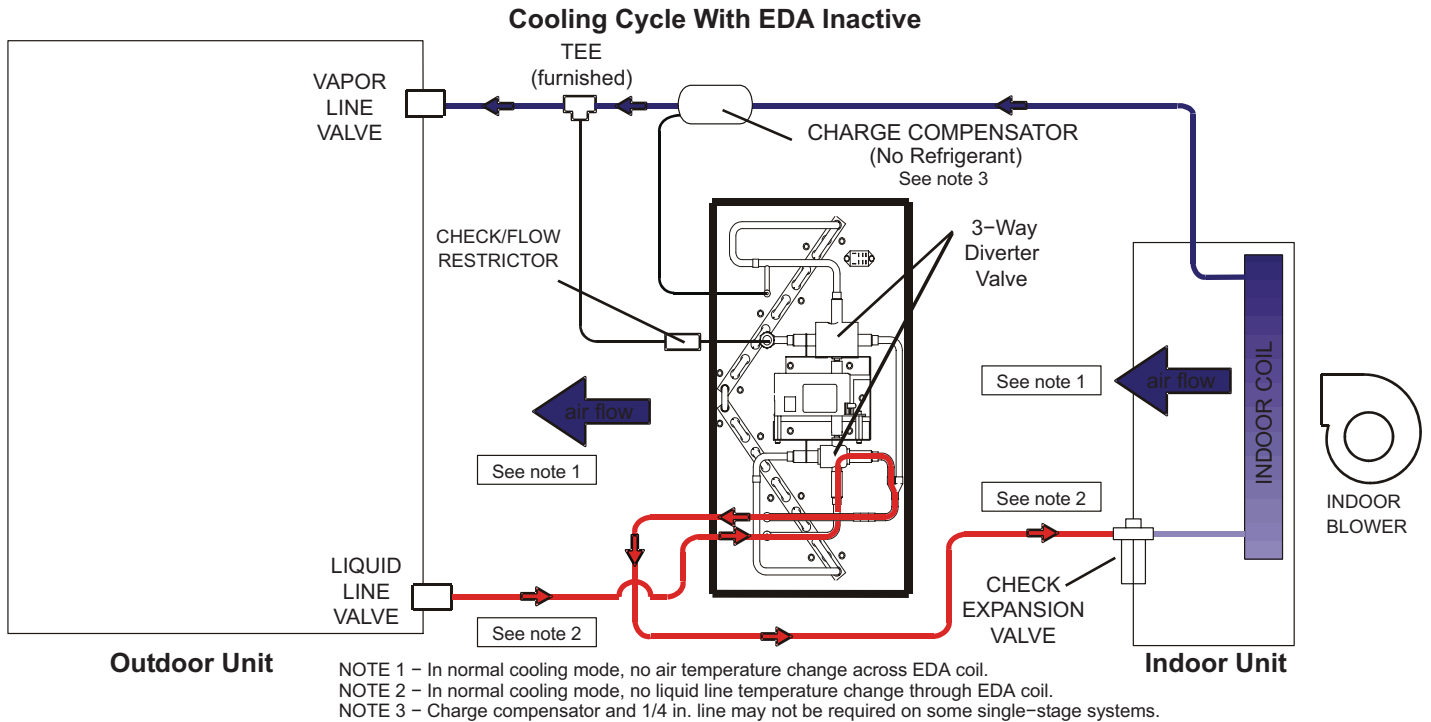


- NOTE 1 – With EDA coil active, expect a 10 to 25° air temperature rise across EDA coil.
 NOTE 2 – With EDA coil active, expect a 10 to 40° liquid line temperature drop through EDA coil.
 NOTE 3 – Charge compensator and 1/4 in. line may not be required on some single-stage systems.

SEQUENCE OF OPERATION (continued)

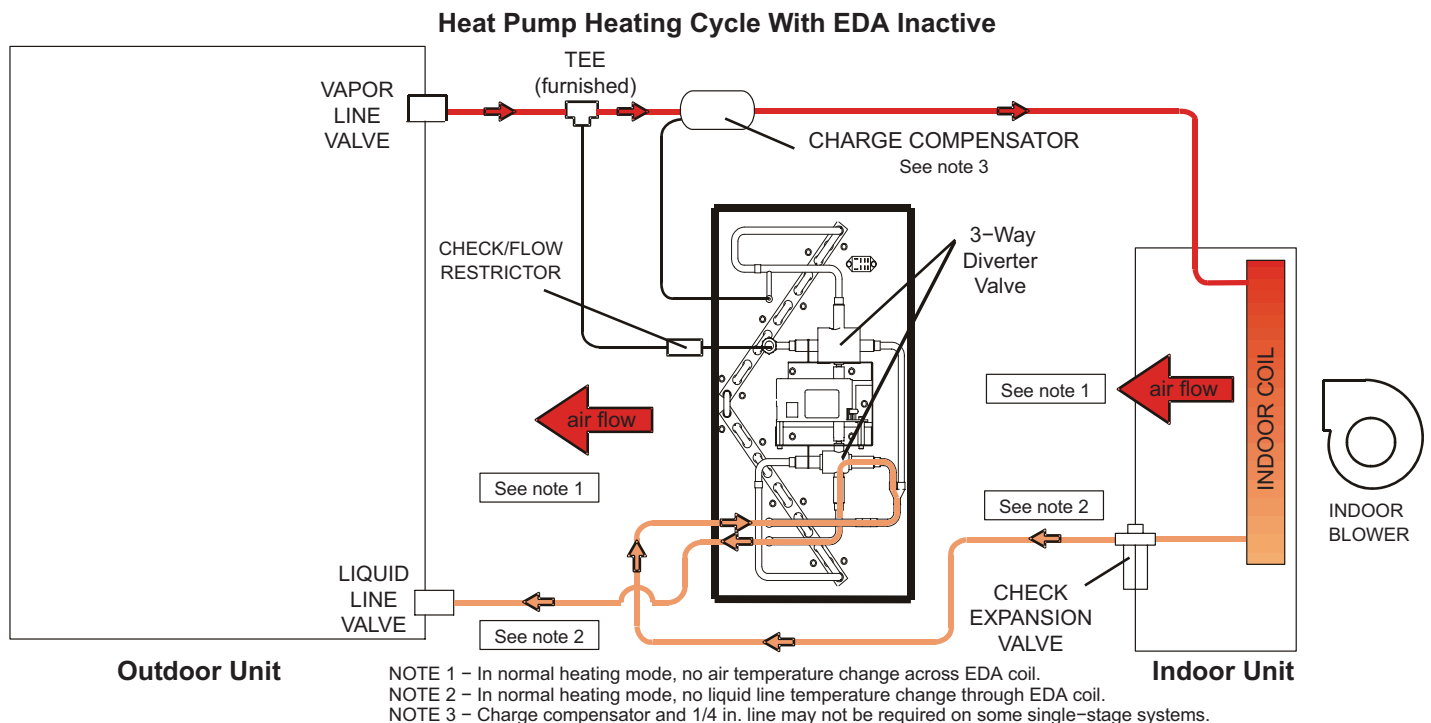
Cooling Cycle With EDA Inactive

- In normal cooling mode (dehumidification mode OFF), the liquid refrigerant from the outdoor unit enters the first 3-way diverter valve
- The diverter valve actuator directs the refrigerant flow to bypass the EDA coil and flow directly to the indoor unit expansion valve



Heat Pump Heating Cycle With EDA Inactive

- In heat pump heating mode, a system that includes an EDA unit will operate as a conventional heat pump; there is no requirement for EDA unit operation in heat pump heating mode



SPECIFICATIONS

General Data		Model No.	EDA-024B	EDA-036C	EDA-060D
Line Connections in. (sweat)	Liquid to Indoor TXV o.d.		3/8	3/8	3/8
	Liquid from Outdoor Unit o.d.		3/8 (9.5)	3/8	3/8
	Check/Flow Restrictor to Vapor Line Tee o.d.		3/8	3/8	3/8
	Charge Compensator o.d.		1/4	1/4	1/4
EDA Coil	Net face area - sq. ft.		2.0	3.0	4.0
	Tube diameter - in.		3/8	3/8	3/8
	Fins per inch		20	20	14
	Number of rows		1	1	1
Shipping Data	lbs. - 1 package		35	39	47

CONTROLS - ORDER SEPARATELY

Model No.		EDA-024B	EDA-036C	EDA-060D
iComfort® S30 Ultra-Smart Wi-Fi Thermostat (4 heat / 2 cool)		12U67	12U67	12U67
iComfort® E30 Smart Wi-Fi Thermostat (3 heat / 2 cool)		15S63	15S63	15S63
¹ Discharge Air Temperature Sensor (for E30/S30)		88K38	88K38	88K38
iComfort® M30 Smart Wi-Fi Thermostat (4 heat / 2 cool)		15Z69	15Z69	15Z69
ComfortSense® 7500 Thermostat (4 heat / 2 cool)		13H14	13H14	13H14
ComfortSense® 7500 Commercial Thermostat (4 heat / 2 cool)		17G74	17G74	17G74
² Remote Outdoor Temperature Sensor (all thermostats) (for dual fuel, Humiditrol® and outdoor temperature display)		X2658	X2658	X2658
Dehumidification Relay Kit (for CBA27UHE air handlers)		26W62	26W62	26W62

¹ Optional for service diagnostics.

² Remote Outdoor Temperature Sensor is used with conventional (non-iComfort® Communicating) outdoor units (sensor is furnished with iComfort® Communicating outdoor units). Allows the thermostat to display outdoor temperature. Required in dual-fuel and Humiditrol® applications.

REQUIRED COMPONENTS - ORDER SEPARATELY

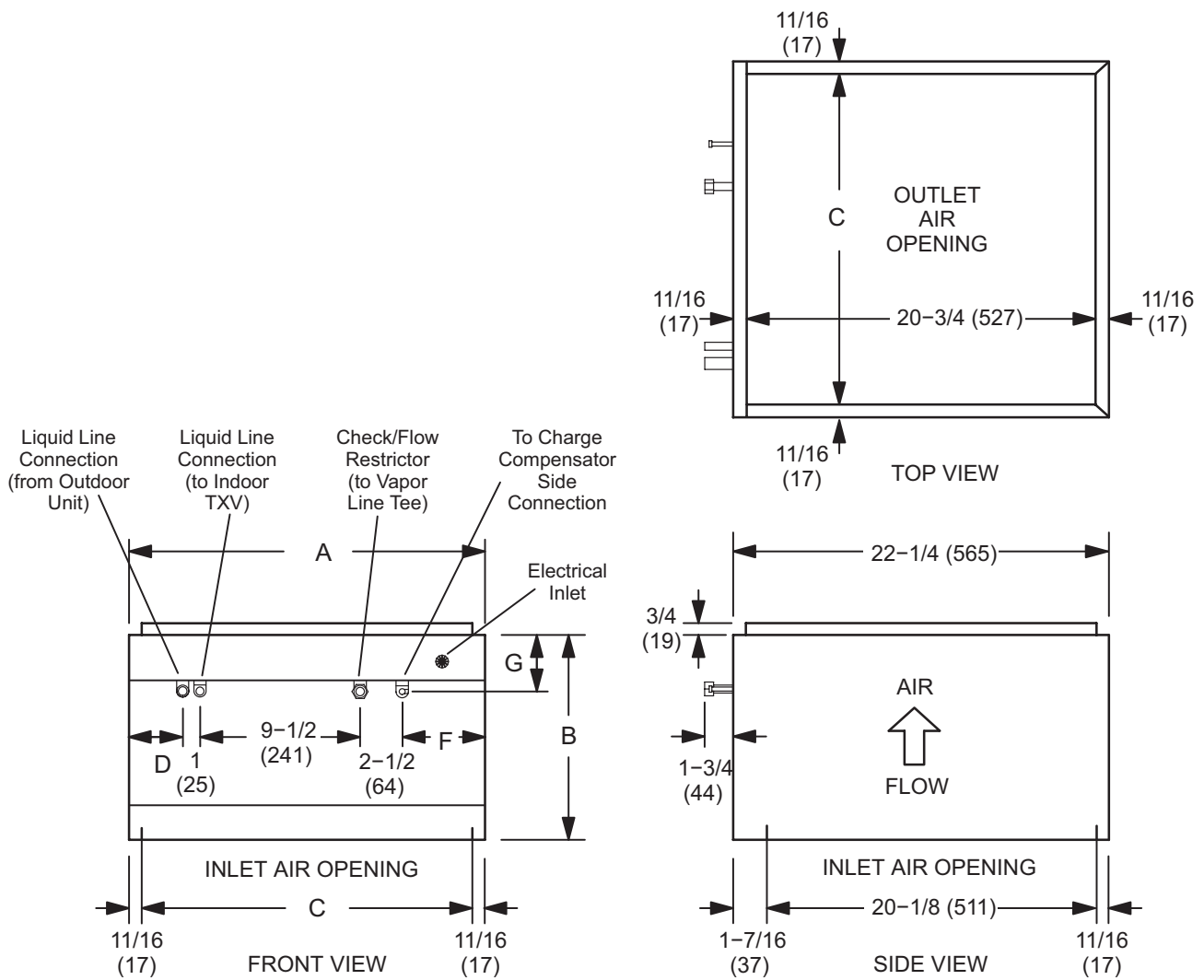
Model No.		EDA-024B	EDA-036C	EDA-060D
ELECTRICAL				
⁴ Transformer		12P61 - 75VA, 120/208/240V primary, 24VAC secondary		
REFRIGERATION				
Insulation and Piping Kits		See EDA Match-Up tables for usage		

⁴ Required when EDA unit is installed with two-stage heat pump system.

AIR RESISTANCE

Model No.	Air Volume (cfm)	Total Air Resistance (in. w.g.)
EDA-024B	400	0.05
	600	0.10
	800	0.15
	1000	0.22
EDA-036C	600	0.05
	800	0.08
	1000	0.11
	1200	0.15
	1400	0.20
EDA-060D	1000	0.05
	1200	0.06
	1400	0.08
	1600	0.10
	1800	0.11
	2000	0.13
	2200	0.15

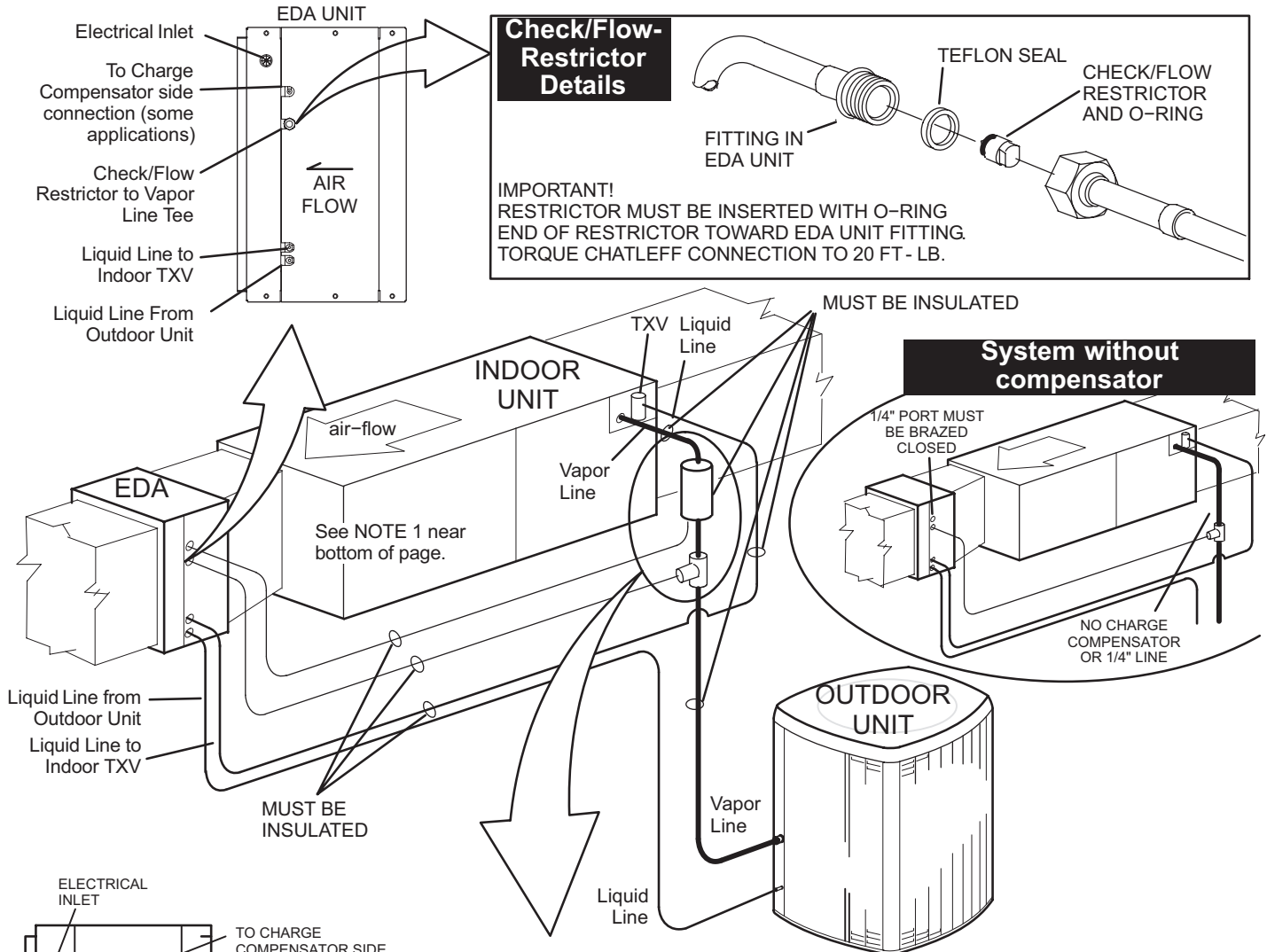
DIMENSIONS



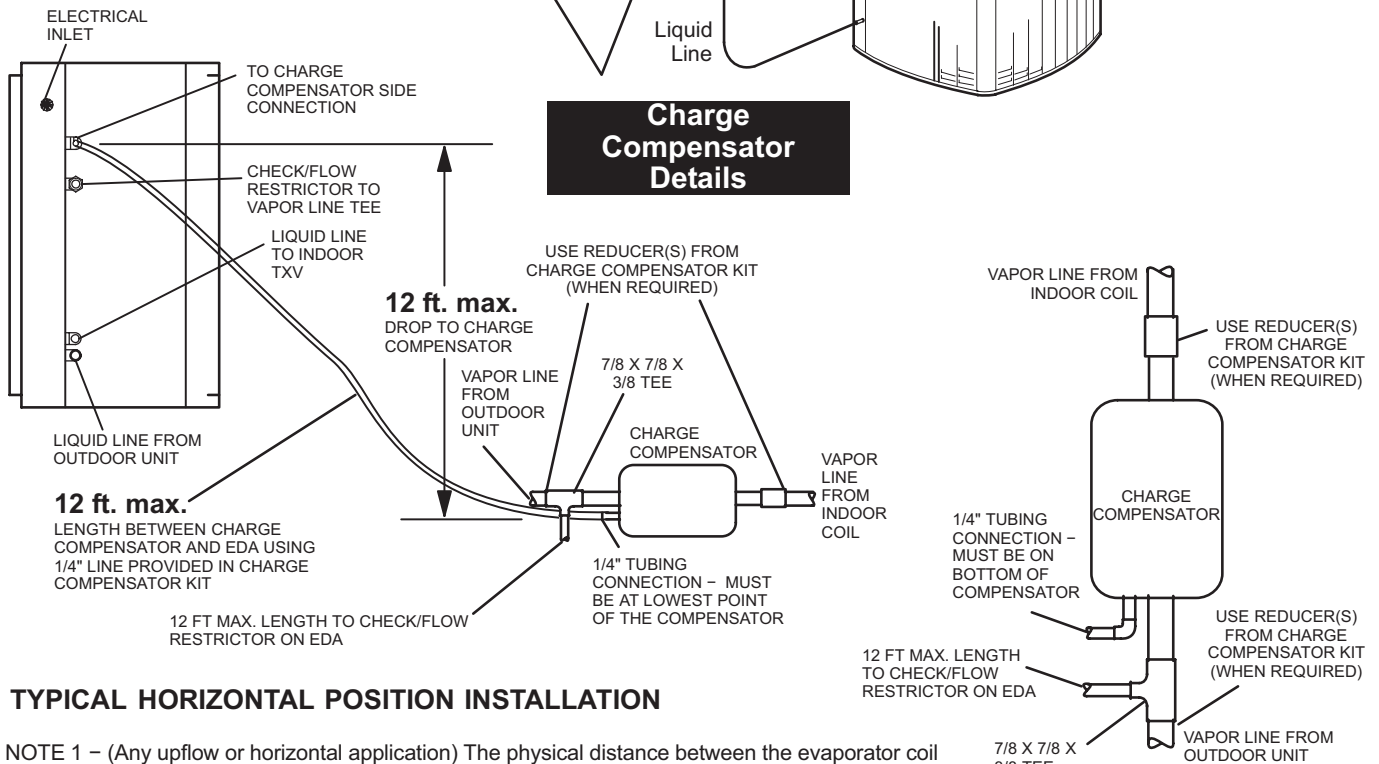
Model No.	A		B		C		D		E		F		G	
	in.	mm	in.	mm	in.	mm	in.	mm	in.	mm	in.	mm	in.	mm
EDA-024B	17-1/2	445	12-1/4	311	16-1/8	422	1-3/8	35	3-1/8	79	3	76	3	76
EDA-036C	21	533	12-1/4	311	19-5/8	498	3-1/8	79	4-7/8	124	3-1/4	83	3-1/4	83
EDA-060D	24-1/2	622	14	356	23-1/8	587	4-7/8	124	6-5/8	168	4-3/4	121	4-3/4	121

TYPICAL INSTALLATION

Typical Installation (Horizontal Air Handler shown)



Charge Compensator Details

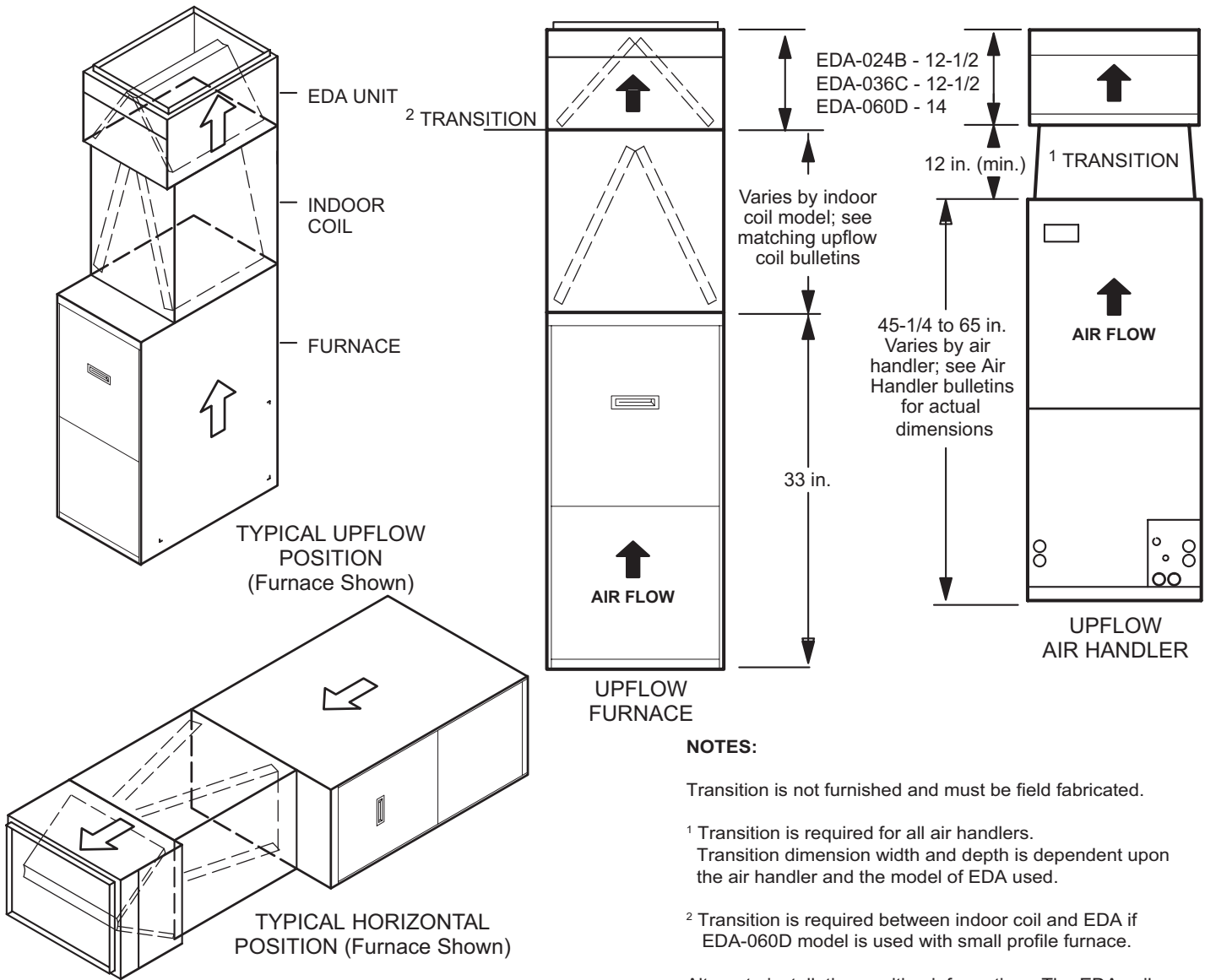


TYPICAL HORIZONTAL POSITION INSTALLATION

NOTE 1 - (Any upflow or horizontal application) The physical distance between the evaporator coil and the EDA unit can be extended so long as all of the evaporator coil air flow also flows through the EDA coil and the 12 foot line length limitations are met.

UPFLOW POSITION

INSTALLATION CONFIGURATIONS



NOTES:

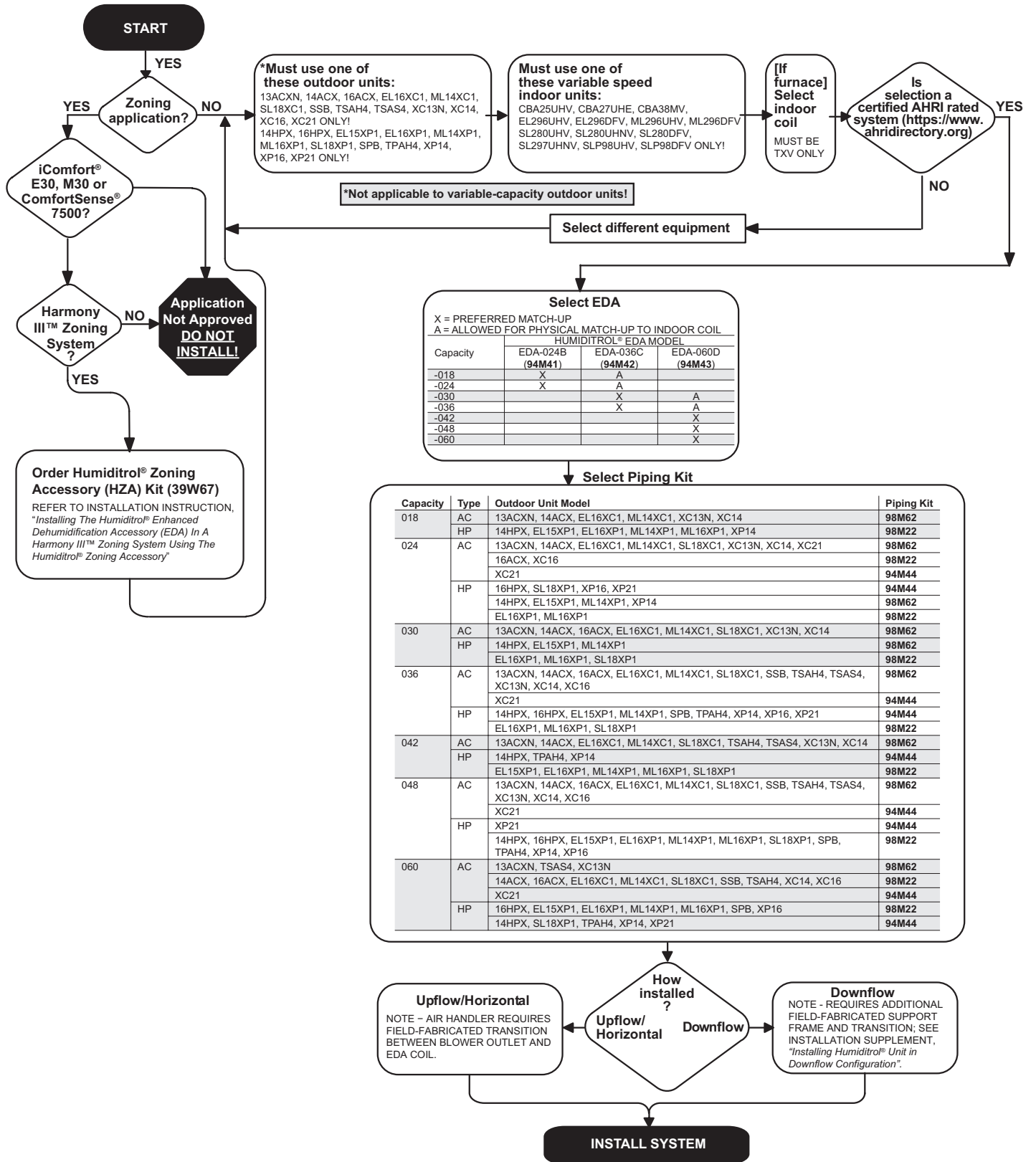
Transition is not furnished and must be field fabricated.

¹ Transition is required for all air handlers. Transition dimension width and depth is dependent upon the air handler and the model of EDA used.

² Transition is required between indoor coil and EDA if EDA-060D model is used with small profile furnace.

Alternate installation position information - The EDA coil is not position sensitive as long as the correct air flow direction through the coil is maintained. See Dimension Drawing on page 8 for correct air flow.

SYSTEM DECISION TREE



EDA MATCH-UPS - AIR CONDITIONERS

Outdoor Unit Model No.	EDA Model No.	Sensible to Total Ratio	Liters per kWh	Liters per Day	EDA Insulation and Piping Kit Catalog No.
13ACX					
13ACXN018	EDA-024B	0.30	3.2	88	98M62
13ACXN024	EDA-024B	0.31	3.1	112	98M62
13ACXN030	EDA-036C	0.31	3.1	140	98M62
13ACXN036	EDA-036C	0.33	3.5	189	98M62
13ACXN042	EDA-060D	0.38	3.4	216	98M62
13ACXN048	EDA-060D	0.39	3.4	253	98M62
13ACXN060	EDA-060D	0.39	3.4	317	98M62
14ACX					
14ACX(-)(S)018	EDA-024B	0.25	3.6	100	98M62
14ACX(-)(S)024	EDA-024B	0.30	3.6	126	98M62
14ACX(-)(S)030	EDA-036C	0.32	3.3	142	98M62
14ACX(-)(S)036	EDA-036C	0.36	3.5	173	98M62
14ACX(-)(S)042	EDA-060D	0.41	3.3	203	98M62
14ACX-048	EDA-060D	0.40	3.3	260	98M62
14ACX-060	EDA-060D	0.39	3.5	308	98M22
16ACX					
16ACX-024	EDA-024B	0.32	3.5	129	98M22
16ACX-036	EDA-036C	0.39	3.4	192	98M62
16ACX-048	EDA-060D	0.43	3.2	234	98M62
16ACX-060	EDA-060D	0.45	3.2	298	98M22
EL16XC1					
EL16XC1-018	EDA-024B	0.25	3.6	100	98M62
EL16XC1-024	EDA-024B	0.30	3.6	126	98M62
EL16XC1-030	EDA-036C	0.32	3.3	142	98M62
EL16XC1(-)(S)036	EDA-036C	0.36	3.5	173	98M62
EL16XC1-042	EDA-060D	0.41	3.3	203	98M62
EL16XC1-048	EDA-060D	0.40	3.3	260	98M62
EL16XC1-060	EDA-060D	0.39	3.5	308	98M22
ML14ACX					
ML14XC1(-)(S)018	EDA-024B	0.25	3.6	100	98M62
ML14XC1(-)(S)024	EDA-024B	0.30	3.6	126	98M62
ML14XC1(-)(S)030	EDA-036C	0.32	3.3	142	98M62
ML14XC1(-)(S)036	EDA-036C	0.36	3.5	173	98M62
ML14XC1(-)(S)042	EDA-060D	0.41	3.3	203	98M62
ML14XC1-048	EDA-060D	0.40	3.3	260	98M62
ML14XC1-060	EDA-060D	0.39	3.5	308	98M22

SYSTEM MATCHES:

Must be one of the furnace or air handler models listed in the System Decision Tree (See page 13) and must be a certified AHRI system match-up (please visit www.LennoxPROs.com or <https://www.ahridirectory.org>).

Upflow and Horizontal Coil + Furnace Transitions

Field fabricated transition from coil to EDA is required when coil or furnace width is different from EDA unit matched with the outdoor unit.

Air Handler Transitions

Transition is required with all air handler matches.

ADDITIONAL NOTES:

- The system is not equivalent to a dehumidifier and will not normally run continuously for 24 hours.
- Approximate, based on 80°F Indoor Dry Bulb, 69.6°F Indoor Wet Bulb and 82°F Outdoor Air Temperature.
- Actual will vary within ± 0.03 depending on final installation variables.
- Typical unit S/T at this condition Without EDA is approximately 0.53 - 0.60.
- Liters per kWh and liters per day are approximate instantaneous values at the specified condition.

EDA MATCH-UPS - AIR CONDITIONERS

Outdoor Unit Model No.	EDA Model No.	Sensible to Total Ratio	Liters per kWh	Liters per Day	EDA Insulation and Piping Kit Catalog No.
SL18XC1					
SL18XC1-024	EDA-024B	0.33	4.0	138	98M62
SL18XC1-030	EDA-036C	0.35	3.4	153	98M62
SL18XC1-036	EDA-036C	0.32	3.8	195	98M62
SL18XC1-042	EDA-060D	0.35	3.5	217	98M62
SL18XC1-048	EDA-060D	0.44	3.4	246	98M62
SL18XC1-060	EDA-060D	0.43	3.5	315	98M22
SSB					
SSB036H4A	EDA-036C	0.39	3.4	192	98M62
SSB048H4A	EDA-060D	0.43	3.2	234	98M62
SSB060H4A	EDA-060D	0.45	3.2	298	98M22
TSAH4					
TSA036H4	EDA-036C	0.36	3.5	173	98M62
TSA042H4	EDA-060D	0.41	3.3	203	98M62
TSA048H4	EDA-060D	0.40	3.3	260	98M62
TSA060H4	EDA-060D	0.39	3.5	308	98M22
TSAS4					
TSA036S4	EDA-036C	0.33	3.5	189	98M62
TSA042S4	EDA-060D	0.38	3.4	216	98M62
TSA048S4	EDA-060D	0.39	3.4	253	98M62
TSA060S4	EDA-060D	0.39	3.4	317	98M62
XC13N					
XC13N018	EDA-024B	0.30	3.2	88	98M62
XC13N024	EDA-024B	0.31	3.1	112	98M62
XC13N030	EDA-036C	0.31	3.1	140	98M62
XC13N036	EDA-036C	0.35	3.1	171	98M62
XC13N042	EDA-060D	0.42	3.0	186	98M62
XC13N048	EDA-060D	0.45	2.8	215	98M62
XC13N060	EDA-060D	0.45	2.9	263	98M62
XC14					
XC14-018	EDA-024B	0.25	3.6	100	98M62
XC14-024	EDA-024B	0.30	3.6	126	98M62
XC14-030	EDA-036C	0.32	3.3	142	98M62
XC14(-)(S)036	EDA-036C	0.36	3.5	173	98M62
XC14-042	EDA-060D	0.41	3.3	203	98M62
XC14-048	EDA-060D	0.40	3.3	260	98M62
XC14-060	EDA-060D	0.39	3.5	308	98M22

SYSTEM MATCHES:

Must be one of the furnace or air handler models listed in the System Decision Tree (See page 13) and must be a certified AHRI system match-up (please visit www.LennoxPROs.com or <https://www.ahridirectory.org>).

Upflow and Horizontal Coil + Furnace Transitions

Field fabricated transition from coil to EDA is required when coil or furnace width is different from EDA unit matched with the outdoor unit.

Air Handler Transitions

Transition is required with all air handler matches.

ADDITIONAL NOTES:

- The system is not equivalent to a dehumidifier and will not normally run continuously for 24 hours.
- Approximate, based on 80°F Indoor Dry Bulb, 69.6°F Indoor Wet Bulb and 82°F Outdoor Air Temperature.
- Actual will vary within ± 0.03 depending on final installation variables.
- Typical unit S/T at this condition Without EDA is approximately 0.53 - 0.60.
- Liters per kWh and liters per day are approximate instantaneous values at the specified condition.

EDA MATCH-UPS - AIR CONDITIONERS

Outdoor Unit Model No.	EDA Model No.	Sensible to Total Ratio	Liters per kWh	Liters per Day	EDA Insulation and Piping Kit Catalog No.
XC16					
XC16-024	EDA-024B	0.32	3.5	129	98M22
XC16-036	EDA-036C	0.39	3.4	192	98M62
XC16-048	EDA-060D	0.43	3.2	234	98M62
XC16-060	EDA-060D	0.45	3.2	298	98M22
XC21					
XC21-024	EDA-024B	0.28	3.2	123	94M44
XC21-036	EDA-036C	0.26	3.0	170	94M44
XC21-048	EDA-060D	0.30	2.9	226	94M44
XC21-060	EDA-060D	0.24	2.7	273	94M44

SYSTEM MATCHES:

Must be one of the furnace or air handler models listed in the System Decision Tree (See page 13) and must be a certified AHRI system match-up (please visit www.LennoxPROs.com or <https://www.ahridirectory.org>).

Upflow and Horizontal Coil + Furnace Transitions

Field fabricated transition from coil to EDA is required when coil or furnace width is different from EDA unit matched with the outdoor unit.

Air Handler Transitions

Transition is required with all air handler matches.

ADDITIONAL NOTES:

- The system is not equivalent to a dehumidifier and will not normally run continuously for 24 hours.
- Approximate, based on 80°F Indoor Dry Bulb, 69.6°F Indoor Wet Bulb and 82°F Outdoor Air Temperature.
- Actual will vary within ± 0.03 depending on final installation variables.
- Typical unit S/T at this condition Without EDA is approximately 0.53 - 0.60.
- Liters per kWh and liters per day are approximate instantaneous values at the specified condition.

CBA27UHE AIR HANDLER ADJUSTMENTS - AIR CONDITIONERS

13ACXN

13ACXN018 + CBA27UHE-018 - Rating Adjustment: S/T +0.06, liters per day -1.4
13ACXN024 + CBA27UHE-024 - Rating Adjustment: S/T +0.03, liters per day -1.0
13ACXN030 + CBA27UHE-030 - Rating Adjustment: S/T +0.07, liters per day -2.0, liters per kWh -0.1
13ACXN036 + CBA27UHE-036 - Rating Adjustment: S/T +0.04, liter per day -2.0
13ACXN036 + CBA27UHE-042 - Rating Adjustment: S/T +0.02
13ACXN042 + CBA27UHE-042 - Rating Adjustment: S/T +0.02
13ACXN042 + CBA27UHE-048 - Rating Adjustment: S/T +0.03
13ACXN048 + CBA27UHE-048 - Rating Adjustment: S/T +0.03
13ACXN048 + CBA27UHE-060 - Rating Adjustment: S/T +0.02, liter per day -2.0, liters per kWh -0.1
13ACXN060 + CBA27UHE-060 - Rating Adjustment: S/T +0.02, liter per day -2.0, liters per kWh -0.1

14ACX

14ACX (-)(S) 018 + CBA27UHE-018 - Rating Adjustment: S/T +0.06, liters per day -1.4
14ACX (-)(S) 024 + CBA27UHE-024 - Rating Adjustment: S/T +0.03, liters per day -1.0
14ACX (-)(S) 030 + CBA27UHE-030 - Rating Adjustment: S/T +0.07, liters per day -2.0, liters per kWh -0.1
14ACX (-)(S) 036 + CBA27UHE-036 - Rating Adjustment: S/T +0.04, liters per day -2.0
14ACX (-)(S) 042 + CBA27UHE-042 - Rating Adjustment: S/T +0.02
14ACX-048 + CBA27UHE-048 - Rating Adjustment: S/T +0.03
14ACX-060 + CBA27UHE-060 - Rating Adjustment: S/T +0.02, liters per day -2.0, liters per kWh -0.1

16ACX

16ACX-024 + CBA27UHE-024 - Rating Adjustment: S/T +0.03, liters per day -1.0
16ACX-036 + CBA27UHE-036 - Rating Adjustment: S/T +0.04, liters per day -2.0
16ACX-048 + CBA27UHE-048 - Rating Adjustment: S/T +0.03
16ACX-060 + CBA27UHE-060 - Rating Adjustment: S/T +0.02, liters per day -2.0, liters per kWh -0.1

EL16XC1

EL16XC1-018 + CBA27UHE-018 - Rating Adjustment: S/T +0.06, liters per day -1.4
EL16XC1-024 + CBA27UHE-024 - Rating Adjustment: S/T +0.03, liters per day -1.0
EL16XC1-030 + CBA27UHE-030 - Rating Adjustment: S/T +0.07, liters per day -2.0, liters per kWh -0.1
EL16XC1(-)(S)036 + CBA27UHE-036 - Rating Adjustment: S/T +0.04, liters per day -2.0
EL16XC1-042 + CBA27UHE-042 - Rating Adjustment: S/T +0.02
EL16XC1-048 + CBA27UHE-048 - Rating Adjustment: S/T +0.03
EL16XC1-060 + CBA27UHE-060 - Rating Adjustment: S/T +0.02, liters per day -2.0, liters per kWh -0.1

ML14XC1

ML14XC1 (-)(S) 018 + CBA27UHE-018 - Rating Adjustment: S/T +0.06, liters per day -1.4
ML14XC1 (-)(S) 024 + CBA27UHE-024 - Rating Adjustment: S/T +0.03, liters per day -1.0
ML14XC1 (-)(S) 030 + CBA27UHE-030 - Rating Adjustment: S/T +0.07, liters per day -2.0, liters per kWh -0.1
ML14XC1 (-)(S) 036 + CBA27UHE-036 - Rating Adjustment: S/T +0.04, liters per day -2.0
ML14XC1 (-)(S) 042 + CBA27UHE-042 - Rating Adjustment: S/T +0.02
ML14XC1-048 + CBA27UHE-048 - Rating Adjustment: S/T +0.03
ML14XC1-060 + CBA27UHE-060 - Rating Adjustment: S/T +0.02, liters per day -2.0, liters per kWh -0.1

SL18XC1

SL18XC1-024 + CBA27UHE-030 - Rating Adjustment: S/T +0.07, liters per day -2.0, liters per kWh -0.1
SL18XC1-030 + CBA27UHE-030 - Rating Adjustment: S/T +0.07, liters per day -2.0, liters per kWh -0.1
SL18XC1-036 + CBA27UHE-036 - Rating Adjustment: S/T +0.04, liters per day -2.0
SL18XC1-042 + CBA27UHE-042 - Rating Adjustment: S/T +0.02
SL18XC1-048 + CBA27UHE-048 - Rating Adjustment: S/T +0.03
SL18XC1-060 + CBA27UHE-060 - Rating Adjustment: S/T +0.02, liters per day -2.0, liters per kWh -0.1

SSB

SSB036H4 + CBA27UHE-036 - Rating Adjustment: S/T +0.04, liters per day -2.0
SSB048H4 + CBA27UHE-048 - Rating Adjustment: S/T +0.03
SSB060H4 + CBA27UHE-060 - Rating Adjustment: S/T +0.02, liters per day -2.0, liters per kWh -0.1

CBA27UHE AIR HANDLER ADJUSTMENTS - AIR CONDITIONERS

TSAH4

TSA036H4 + CBA27UHE-036 - Rating Adjustment: S/T +0.04, liters per day -2.0

TSA042H4 + CBA27UHE-042 or CBX40UHV-042 - Rating Adjustment: S/T +0.02

TSA048H4 + CBA27UHE-048 - Rating Adjustment: S/T +0.03

TSA060H4 + CBA27UHE-060 - Rating Adjustment: S/T +0.02, liters per day -2.0, liters per kWh -0.1

TSAS4

TSA036S4 + CBA27UHE-036 - Rating Adjustment: S/T +0.04, liter per day -2.0

TSA036S4 + CBA27UHE-042 - Rating Adjustment: S/T +0.02

TSA042S4 + CBA27UHE-042 - Rating Adjustment: S/T +0.02

TSA042S4 + CBA27UHE-048 - Rating Adjustment: S/T +0.03

TSA048S4 + CBA27UHE-048 - Rating Adjustment: S/T +0.03

TSA048S4 + CBA27UHE-060 - Rating Adjustment: S/T +0.02, liter per day -2.0, liters per kWh -0.1

TSA060S4 + CBA27UHE-060 - Rating Adjustment: S/T +0.02, liter per day -2.0, liters per kWh -0.1

XC13N

XC13N-018 + CBA27UHE-018 - Rating Adjustment: S/T +0.06, liters per day -1.4

XC13N-024 + CBA27UHE-024 - Rating Adjustment: S/T +0.03, liters per day -1.0

XC13N-030 + CBA27UHE-030 - Rating Adjustment: S/T +0.07, liters per day -2.0, liters per kWh -0.1

XC13N-036 + CBA27UHE-036 - Rating Adjustment: S/T +0.04, liters per day -2.0

XC13N-042 + CBA27UHE-042 - Rating Adjustment: S/T +0.02

XC13N-048 + CBA27UHE-048 - Rating Adjustment: S/T +0.03

XC13N-060 + CBA27UHE-060 - Rating Adjustment: S/T +0.02, liters per day -2.0, liters per kWh -0.1

XC14

XC14-018 + CBA27UHE-018 - Rating Adjustment: S/T +0.06, liters per day -1.4

XC14-024 + CBA27UHE-024 - Rating Adjustment: S/T +0.03, liters per day -1.0

XC14-030 + CBA27UHE-030 - Rating Adjustment: S/T +0.07, liters per day -2.0, liters per kWh -0.1

XC14(-)(S)036 + CBA27UHE-036 - Rating Adjustment: S/T +0.04, liters per day -2.0

XC14-042 + CBA27UHE-042 - Rating Adjustment: S/T +0.02

XC14-048 + CBA27UHE-048 - Rating Adjustment: S/T +0.03

XC14-060 + CBA27UHE-060 - Rating Adjustment: S/T +0.02, liters per day -2.0, liters per kWh -0.1

XC16

XC16-024 + CBA27UHE-024 - Rating Adjustment: S/T +0.03, liters per day -1.0

XC16-036 + CBA27UHE-036 - Rating Adjustment: S/T +0.04, liters per day -2.0

XC16-048 + CBA27UHE-048 - Rating Adjustment: S/T +0.03.

XC16-060 + CBA27UHE-060 - Rating Adjustment: S/T +0.02, liters per day -2.0, liters per kWh -0.1

SL18XC1

SL18XC1-024 + CBA27UHE-030 - Rating Adjustment: S/T +0.07, liters per day -2.0, liters per kWh -0.1

SL18XC1-030 + CBA27UHE-030 - Rating Adjustment: S/T +0.07, liters per day -2.0, liters per kWh -0.1

SL18XC1-036 + CBA27UHE-036 - Rating Adjustment: S/T +0.04, liters per day -2.0

SL18XC1-042 + CBA27UHE-042 - Rating Adjustment: S/T +0.02

SL18XC1-048 + CBA27UHE-048 - Rating Adjustment: S/T +0.03

SL18XC1-060 + CBA27UHE-060 - Rating Adjustment: S/T +0.02, liters per day -2.0, liters per kWh -0.1

XC21

XC21-024 + CBA27UHE-024 - Rating Adjustment: S/T +0.03, liters per day -1.0

XC21-036 + CBA27UHE-036 - Rating Adjustment: S/T +0.04, liters per day -2.0

XC21-048 + CBA27UHE-048 - Rating Adjustment: S/T +0.03

XC21-060 + CBA27UHE-060 - Rating Adjustment: S/T +0.02, liters per day -2, liters per kWh -0.1

EDA MATCH-UPS - HEAT PUMPS

Outdoor Unit Model No.	EDA Model No.	Sensible to Total Ratio	Liters per kWh	Liters per Day	EDA Insulation and Piping Kit Catalog No.
14HPX					
14HPX-018	EDA-024B	0.26	3.5	96	98M22
14HPX-024	EDA-024B	0.36	3.6	130	98M62
14HPX-030	EDA-036C	0.34	3.3	145	98M62
14HPX-036	EDA-036C	0.41	3.3	165	94M44
14HPX-042	EDA-060D	0.39	3.5	218	94M44
14HPX-048	EDA-060D	0.44	3.5	250	98M22
14HPX-060	EDA-060D	0.40	3.5	304	94M44
16HPX					
16HPX-024	EDA-024B	0.33	3.2	125	94M44
16HPX-036	EDA-036C	0.34	2.7	157	94M44
16HPX-048	EDA-060D	0.46	3.2	244	98M22
16HPX-060	EDA-060D	0.43	3.1	299	98M22
EL15XP1					
EL15XP1-018	EDA-024B	0.26	3.5	96	98M22
EL15XP1-024	EDA-024B	0.36	3.6	130	98M62
EL15XP1-030	EDA-036C	0.34	3.3	145	98M62
EL15XP1-036	EDA-036C	0.41	3.3	165	94M44
EL15XP1-042	EDA-060D	0.39	3.5	218	98M22
EL15XP1-048	EDA-060D	0.44	3.5	250	98M22
EL15XP1-060	EDA-060D	0.40	3.5	304	98M22
EL16XP1					
EL16XP1-018	EDA-024B	0.26	3.5	96	98M22
EL16XP1-024	EDA-024B	0.36	3.6	130	98M22
EL16XP1-030	EDA-036C	0.34	3.3	145	98M22
EL16XP1-036	EDA-036C	0.41	3.3	165	98M22
EL16XP1-042	EDA-060D	0.39	3.5	218	98M22
EL16XP1-048	EDA-060D	0.44	3.5	250	98M22
EL16XP1-060	EDA-060D	0.40	3.5	304	98M22
ML14XP1					
ML14XP1-018	EDA-024B	0.26	3.5	96	98M22
ML14XP1-024	EDA-024B	0.36	3.6	130	98M62
ML14XP1-030	EDA-036C	0.34	3.3	145	98M62
ML14XP1-036	EDA-036C	0.41	3.3	165	94M44
ML14XP1-042	EDA-060D	0.39	3.5	218	98M22
ML14XP1-048	EDA-060D	0.44	3.5	250	98M22
ML14XP1-060	EDA-060D	0.40	3.5	304	98M22
ML16XP1					
ML16XP1-018	EDA-024B	0.26	3.5	96	98M22
ML16XP1-024	EDA-024B	0.36	3.6	130	98M22
ML16XP1-030	EDA-036C	0.34	3.3	145	98M22
ML16XP1-036	EDA-036C	0.41	3.3	165	98M22
ML16XP1-042	EDA-060D	0.39	3.5	218	98M22
ML16XP1-048	EDA-060D	0.44	3.5	250	98M22
ML16XP1-060	EDA-060D	0.40	3.5	304	98M22

SYSTEM MATCHES:

Must be one of the furnace or air handler models listed in the System Decision Tree (See page 13) and must be a certified AHRI system match (please visit www.LennoxPROs.com or <https://www.ahridirectory.org>).

Upflow and Horizontal Coil + Furnace Transitions

Field fabricated transition from coil to EDA is required when coil or furnace width is different from EDA unit matched with the outdoor unit.

Air Handler Transitions

Transition is required with all air handler matches.

ADDITIONAL NOTES:

- The system is not equivalent to a dehumidifier and will not normally run continuously for 24 hours.
- Approximate, based on 80°F Indoor Dry Bulb, 69.6°F Indoor Wet Bulb and 82°F Outdoor Air Temperature.
- Actual will vary within ± 0.03 depending on final installation variables.
- Typical unit S/T at this condition Without EDA is approximately 0.53 - 0.60.
- Liters per kWh and liters per day are approximate instantaneous values at the specified condition.

EDA MATCH-UPS - HEAT PUMPS

Outdoor Unit Model No.	EDA Model No.	Sensible to Total Ratio	Liters per kWh	Liters per Day	EDA Insulation and Piping Kit Catalog No.
SL18XP1					
SL18XP1-024	EDA-024B	0.32	3.7	128	94M44
SL18XP1-030	EDA-036C	0.35	3.9	167	98M22
SL18XP1-036	EDA-036C	0.38	3.7	196	98M22
SL18XP1-042	EDA-060D	0.38	3.5	228	98M22
SL18XP1-048	EDA-060D	0.41	3.6	260	98M22
SL18XP1-060	EDA-060D	0.41	3.2	270	94M44
SPB					
SPB036H4A	EDA-036C	0.34	2.7	127	94M44
SPB048H4A	EDA-060D	0.46	3.2	244	98M22
SPB060H4A	EDA-060D	0.43	3.1	299	98M22
TPA*H4					
TPA036H4	EDA-036C	0.41	3.3	165	94M44
TPA042H4	EDA-060D	0.39	3.5	218	94M44
TPA048H4	EDA-060D	0.44	3.5	250	98M22
TPA060H4	EDA-060D	0.40	3.5	304	94M44
XP14					
XP14-018	EDA-024B	0.26	3.5	96	94M44
XP14-024	EDA-024B	0.36	3.6	130	98M22
XP14-030	EDA-036C	0.34	3.3	145	98M22
XP14-036	EDA-036C	0.41	3.3	165	94M44
XP14-042	EDA-060D	0.39	3.5	218	94M44
XP14-048	EDA-060D	0.44	3.5	250	98M22
XP14-060	EDA-060D	0.40	3.5	304	94M44
XP16					
XP16-024	EDA-024B	0.33	3.2	125	94M44
XP16-036	EDA-036C	0.34	2.7	127	94M44
XP16-048	EDA-060D	0.46	3.2	244	98M22
XP16-060	EDA-060D	0.43	3.1	299	98M22
XP21					
XP21-024	EDA-024B	0.26	2.8	120	94M44
XP21-036	EDA-036C	-0.13	2.5	162	94M44
XP21-048	EDA-060D	0.22	2.9	229	94M44
XP21-060	EDA-060D	0.19	2.5	274	94M44

SYSTEM MATCHES:

Must be one of the furnace or air handler models listed in the System Decision Tree (See page 13) and must be a certified AHRI system match (please visit www.LennoxPROs.com or <https://www.ahridirectory.org>).

Upflow and Horizontal Coil + Furnace Transitions

Field fabricated transition from coil to EDA is required when coil or furnace width is different from EDA unit matched with the outdoor unit.

Air Handler Transitions

Transition is required with all air handler matches.

ADDITIONAL NOTES:

- The system is not equivalent to a dehumidifier and will not normally run continuously for 24 hours.
- Approximate, based on 80°F Indoor Dry Bulb, 69.6°F Indoor Wet Bulb and 82°F Outdoor Air Temperature.
- Actual will vary within ± 0.03 depending on final installation variables.
- Typical unit S/T at this condition Without EDA is approximately 0.53 - 0.60.
- Liters per kWh and liters per day are approximate instantaneous values at the specified condition.

CBA27UHE AIR HANDLER ADJUSTMENTS - HEAT PUMPS

14HPX

14HPX-018 + CBA27UHE-018 - Rating Adjustment: S/T +0.06, liters per day -1.4

14HPX-024 + CBA27UHE-024 - Rating Adjustment: S/T +0.03, liters per day -1.0

14HPX-030 + CBA27UHE-030 - Rating Adjustment: S/T +0.07, liters per day -2.0, liters per kWh -0.1

14HPX-036 + CBA27UHE-036 - Rating Adjustment: S/T +0.04, liters per day -2.0

14HPX-042 + CBA27UHE-042 - Rating Adjustment: S/T +0.02

14HPX-048 + CBA27UHE-048 - Rating Adjustment: S/T +0.03

14HPX-060 + CBA27UHE-060 - Rating Adjustment: S/T +0.02, liters per day -2.0, liters per kWh -0.1

16HPX

16HPX-024 + CBA27UHE-024 - Rating Adjustment: S/T +0.03, liters per day -1.0

16HPX-036 + CBA27UHE-036 - Rating Adjustment: S/T +0.04, liters per day -2.0

16HPX-048 + CBA27UHE-048 - Rating Adjustment: S/T +0.03

16HPX-060 + CBA27UHE-060 - Rating Adjustment: S/T +0.02, liters per day -2.0, liters per kWh -0.1

EL15XP1

EL15XP1-018 + CBA27UHE-018 - Rating Adjustment: S/T +0.06, liters per day -1.4

EL15XP1-024 + CBA27UHE-024 - Rating Adjustment: S/T +0.03, liters per day -1.0

EL15XP1-030 + CBA27UHE-030 - Rating Adjustment: S/T +0.07, liters per day -2.0, liters per kWh -0.1

EL15XP1-036 + CBA27UHE-036 - Rating Adjustment: S/T +0.04, liters per day -2.0

EL15XP1-042 + CBA27UHE-042 - Rating Adjustment: S/T +0.02

EL15XP1-048 + CBA27UHE-048 - Rating Adjustment: S/T +0.03

EL15XP1-060 + CBA27UHE-060 - Rating Adjustment: S/T +0.02, liters per day -2.0, liters per kWh -0.1

EL16XP1

EL16XP1-018 + CBA27UHE-018 - Rating Adjustment: S/T +0.06, liters per day -1.4

EL16XP1-024 + CBA27UHE-024 - Rating Adjustment: S/T +0.03, liters per day -1.0

EL16XP1-030 + CBA27UHE-030 - Rating Adjustment: S/T +0.07, liters per day -2.0, liters per kWh -0.1

EL16XP1-036 + CBA27UHE-036 - Rating Adjustment: S/T +0.04, liters per day -2.0

EL16XP1-042 + CBA27UHE-042 - Rating Adjustment: S/T +0.02

EL16XP1-048 + CBA27UHE-048 - Rating Adjustment: S/T +0.03

EL16XP1-060 + CBA27UHE-060 - Rating Adjustment: S/T +0.02, liters per day -2.0, liters per kWh -0.1

ML14XP1

ML14XP1-018 + CBA27UHE-018 - Rating Adjustment: S/T +0.06, liters per day -1.4

ML14XP1-024 + CBA27UHE-024 - Rating Adjustment: S/T +0.03, liters per day -1.0

ML14XP1-030 + CBA27UHE-030 - Rating Adjustment: S/T +0.07, liters per day -2.0, liters per kWh -0.1

ML14XP1-036 + CBA27UHE-036 - Rating Adjustment: S/T +0.04, liters per day -2.0

ML14XP1-042 + CBA27UHE-042 - Rating Adjustment: S/T +0.02

ML14XP1-048 + CBA27UHE-048 - Rating Adjustment: S/T +0.03

ML14XP1-060 + CBA27UHE-060 - Rating Adjustment: S/T +0.02, liters per day -2.0, liters per kWh -0.1

ML16XP1

ML16XP1-018 + CBA27UHE-018 - Rating Adjustment: S/T +0.06, liters per day -1.4

ML16XP1-024 + CBA27UHE-024 - Rating Adjustment: S/T +0.03, liters per day -1.0

ML16XP1-030 + CBA27UHE-030 - Rating Adjustment: S/T +0.07, liters per day -2.0, liters per kWh -0.1

ML16XP1-036 + CBA27UHE-036 - Rating Adjustment: S/T +0.04, liters per day -2.0

ML16XP1-042 + CBA27UHE-042 - Rating Adjustment: S/T +0.02

ML16XP1-048 + CBA27UHE-048 - Rating Adjustment: S/T +0.03

ML16XP1-060 + CBA27UHE-060 - Rating Adjustment: S/T +0.02, liters per day -2.0, liters per kWh -0.1

CBA27UHE AIR HANDLER ADJUSTMENTS - HEAT PUMPS

SL18XP1

SL18XP1-024 + CBA27UHE-030 - Rating Adjustment: S/T +0.07, liters per day -2.0, liters per kWh -0.1

SL18XP1-030 + CBA27UHE-030 - Rating Adjustment: S/T +0.07, liters per day -2.0, liters per kWh -0.1

SL18XP1-036 + CBA27UHE-036 - Rating Adjustment: S/T +0.04, liters per day -2.0

SL18XP1-042 + CBA27UHE-042 - Rating Adjustment: S/T +0.02

SL18XP1-048 + CBA27UHE-048 - Rating Adjustment: S/T +0.03

SL18XP1-060 + CBA27UHE-060 - Rating Adjustment: S/T +0.02, liters per day -2.0, liters per kWh -0.1

SPB

SPB036H4 + CBA27UHE-036 - Rating Adjustment: S/T +0.04, liters per day -2.0

SPB048H4 + CBA27UHE-048 - Rating Adjustment: S/T +0.03

SPB060H4 + CBA27UHE-060 - Rating Adjustment: S/T +0.02, liters per day -2.0, liters per kWh -0.1

TPA*H4

TPA036H4 + CBA27UHE-036 - Rating Adjustment: S/T +0.04, liters per day -2.0

TPA042H4 + CBA27UHE-042 - Rating Adjustment: S/T +0.02

TPA048H4 + CBA27UHE-048 - Rating Adjustment: S/T +0.03

TPA060H4 + CBA27UHE-060 - Rating Adjustment: S/T +0.02, liters per day -2.0, liters per kWh -0.1

TPA*S4

TPA036S4 + CBA27UHE-036 - Rating Adjustment: S/T +0.04, liter per day -2.0

TPA036S4 + CBA27UHE-042 - Rating Adjustment: S/T +0.02

TPA042S4 + CBA27UHE-042 - Rating Adjustment: S/T +0.02

TPA042S4 + CBA27UHE-048 - Rating Adjustment: S/T +0.03

TPA048S4 + CBA27UHE-048 - Rating Adjustment: S/T +0.03

TPA048S4 + CBA27UHE-060 - Rating Adjustment: S/T +0.02, liter per day -2.0, liters per kWh -0.1

TPA060S4 + CBA27UHE-060 - Rating Adjustment: S/T +0.02, liter per day -2.0, liters per kWh -0.1

XP14

XP14-018 + CBA27UHE-018 - Rating Adjustment: S/T +0.06, liters per day -1.4

XP14-024 + CBA27UHE-024 - Rating Adjustment: S/T +0.03, liters per day -1.0

XP14-030 + CBA27UHE-030 - Rating Adjustment: S/T +0.07, liters per day -2.0, liters per kWh -0.1

XP14-036 + CBA27UHE-036 - Rating Adjustment: S/T +0.04, liters per day -2.0

XP14-042 + CBA27UHE-042 - Rating Adjustment: S/T +0.02

XP14-048 + CBA27UHE-048 - Rating Adjustment: S/T +0.03

XP14-060 + CBA27UHE-060 - Rating Adjustment: S/T +0.02, liters per day -2.0, liters per kWh -0.1

XP16

XP16-024 + CBA27UHE-024 - Rating Adjustment: S/T +0.03, liters per day -1.0

XP16-036 + CBA27UHE-036 - Rating Adjustment: S/T +0.04, liters per day -2.0

XP16-048 + CBA27UHE-048 - Rating Adjustment: S/T +0.03.

XP16-060 + CBA27UHE-060 - Rating Adjustment: S/T +0.02, liters per day -2.0, liters per kWh -0.1

XP21

XP21-036 + CBA27UHE-036 - Rating Adjustment: S/T +0.04, liters per day -2.0

XP21-048 + CBA27UHE-048 - Rating Adjustment: S/T +0.03

XP21-060 + CBA27UHE-060 - Rating Adjustment: S/T +0.02, liters per day -2, liters per kWh -0.1

REVISIONS

Sections	Description of Change
System Decision Tree	Updated to include latest air handlers and furnaces that are applicable.



Visit us at www.lennox.com

For the latest technical information, www.LennoxPros.com

Contact us at 1-800-4-LENNOX

NOTE - Due to Lennox' ongoing commitment to quality, Specifications, Ratings and Dimensions subject to change without notice and without incurring liability. Improper installation, adjustment, alteration, service or maintenance can cause property damage or personal injury. Installation and service must be performed by a qualified installer and servicing agency.

©2020 Lennox Industries, Inc.