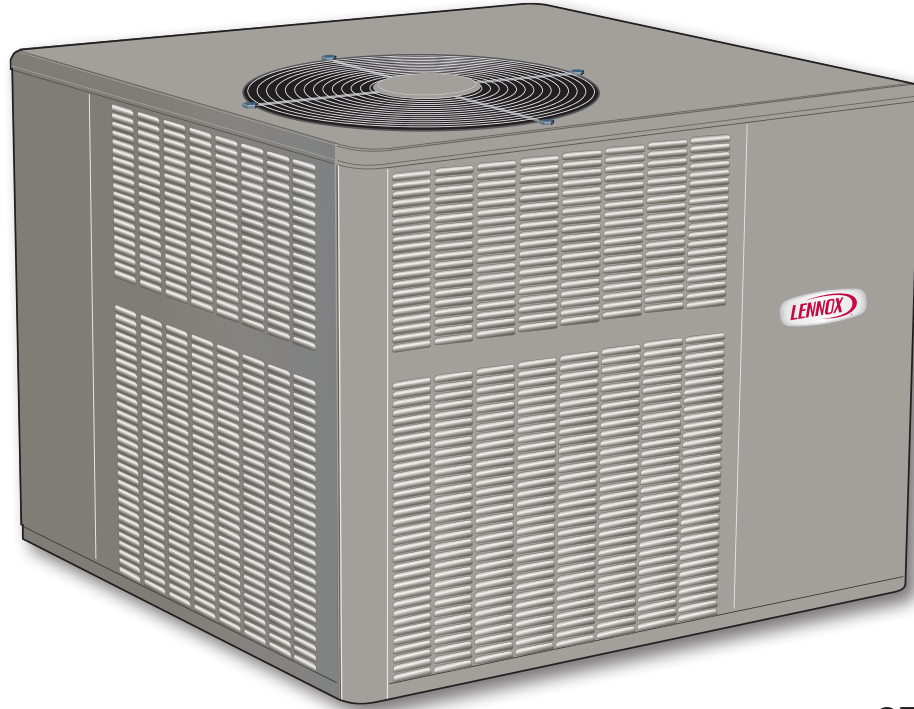




Residential - Two-Stage Compressor - Variable Speed Blower - 60 Hz

**RESIDENTIAL
PRODUCT SPECIFICATIONS**

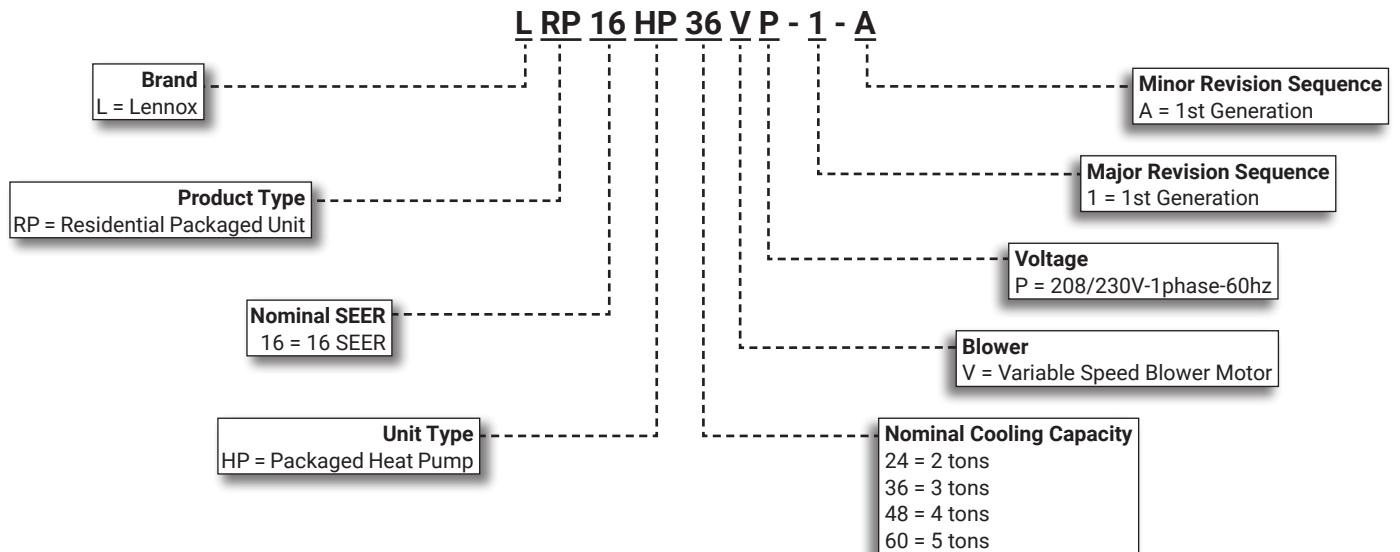
Bulletin No. 210774
September 2019
Supersedes March 2017



SEER - up to 16.00
HSPF - 8.20
2 to 5 Tons

Cooling Capacity - 23,000 to 57,000 Btuh
Heating Capacity - 22,000 to 56,000 Btuh
Optional Electric Heat - 5 to 20 kW

MODEL NUMBER IDENTIFICATION



CONTENTS

Approvals and Warranty	2
Blower Data	9
Cooling Ratings	10
Dimensions - Accessories	14
Dimensions - Unit	13
Electrical/Electric Heat Data	8
Electric Heat Capacities	8
Features	3
Field Wiring	12
Heating Ratings	12
Installation Clearances	12
Model Number Identification.	1
Optional Accessories - Order Separately	7
Specifications	6

APPROVALS AND WARRANTY

APPROVALS

- AHRI Standard 210/240 Certified
- Design Certified by ETL Intertek
- ENERGY STAR® certified units are designed to use less energy, help save money on utility bills, and help protect the environment
- Cooling system rated according to DOE test procedures
- Heating ratings are Certified by AHRI according to U.S. Department of Energy (DOE) test procedures and Federal Trade Commission (FTC) labeling regulations
- Units are ETL Certified for the U.S. and Canada
- Unit and components are UL bonded for grounding to meet safety standards for servicing
- Optional electric heaters are ETL listed for the US and Canada and are rated and tested according to DOE test procedures and FTC labeling regulations
- Test operated at the factory before shipment ensuring dependable operation at start-up

WARRANTY

- Compressor:
 - Limited ten years in residential installations
 - Limited five years in non-residential installations
- All other covered components:
 - Limited five years in residential installations
 - Limited one year in non-residential installations

NOTE - Refer to Lennox Equipment Limited Warranty certificate included with unit for specific details.

FEATURES

APPLICATIONS

- Designed for outdoor installations at ground level or rooftop for residential applications.

NOTE - Units are not approved for zoning applications.

REFRIGERATION SYSTEM

R-410A Refrigerant

- Non-chlorine, ozone friendly
- Unit pre-charged with refrigerant

Indoor and Outdoor Coils

- Copper tube with aluminum fin coils

Anti-Microbial Indoor Coil Drain Pan

- Anti-Microbial additive resists growth of mold and mildew on drain pan which improves indoor air quality and reduces drain line blockage
- Includes drain pan overflow switch
- Monitors condensate level in drain pan, shuts down unit if drain becomes clogged

Outdoor Coil Fan

- Weather protected heavy duty condenser fan motor
- Coated steel fan blades for long life
- Corrosion-resistant coated steel fan guard
- Internally mounted
- Totally enclosed fan motor

Four-Way Reversing Valve

- Rapid changeover of refrigerant flow direction from cooling to heating and vice versa
- Operates on pressure differential between outdoor unit and indoor coil
- Factory installed

High Pressure Switch

- Protects the system from high pressure conditions
- Automatic reset

Loss of Charge Switch

- Shuts off unit if suction pressure falls below setting
- Loss of charge and freeze-up protection

COMPRESSOR

Two-Stage Scroll Compressor

- High volumetric efficiency
- Uniform suction flow
- Constant discharge flow
- Quiet operation

Compressor Operation

- Two involute spiral scrolls matched together generate a series of crescent shaped gas pockets between them
- During compression, one scroll remains stationary while the other scroll orbits around it
- Gas is drawn into the outer pocket, the pocket is sealed as the scroll rotates
- As the spiral movement continues, gas pockets are pushed to the center of the scrolls
- Volume between the pockets is simultaneously reduced
- When the pocket reaches the center, gas is now at high pressure and is forced out of a port located in the center of the fixed scrolls
- During compression, several pockets are compressed simultaneously resulting in a smooth continuous compression cycle
- Continuous flank contact, maintained by centrifugal force, minimizes gas leakage and maximizes efficiency
- Compressor is tolerant to the effects of slugging and contaminants
- If this occurs, scrolls separate, allowing liquid or contaminants to be worked toward the center and discharged
- During the compression process, there are several pockets in the scroll that are compressing gas
- Modulation is achieved by venting a portion of the gas in the first suction pocket back to the low side of the compressor thereby reducing the effective displacement of the compressor
- A 24-volt DC solenoid valve inside the compressor controls staging
- When the 3-way solenoid is energized it moves the lift ring assembly to block the ports and the compressor operates at full-load or 100% capacity
- When the solenoid is de-energized the lift ring assembly moves to unblock the compressor ports and the compressor operates at part-load or approximately 67% of its full-load capacity
- The "loading" and "unloading" of the two stage scroll is done "on the fly" without shutting off the single-speed compressor motor between stages
- Low gas pulses during compression reduces operational sound levels
- Compressor motor is internally protected from excessive current and temperature
- Compressor is installed in the unit on specially formulated, resilient rubber mounts for better sound dampening and vibration free operation

FEATURES

COMPRESSOR (continued)

Optional Accessories

Compressor Crankcase Heater

- Protects against refrigerant migration that can occur during low ambient operation

Compressor Hard Start Kit

- A PSC compressor motor does not normally need a potential relay and start capacitor
- In cases of low voltage, kit may be required to increase the compressor starting torque

SUPPLY AIR BLOWER

Direct Drive Blower

- Blower wheel statically and dynamically balanced
- Multi-speed operation is achieved by the use of an ECM (Electronically Commutated Motor) variable speed motor
- Blower assembly easily removed for servicing

ECM Variable Speed Blower Motor

- Variable speed motor maintains specified air volume from 0 though 0.80 in. w.g. static range
- Motor is controlled by the blower control
- Change in blower speed is easily accomplished by simple jumper pin change on blower control
- Motor is resiliently mounted

INDOOR AIR QUALITY (Option)

Healthy Climate® PCO Accessory

- The Healthy Climate® PCO Accessory uses photocatalytic oxidation (PCO) technology to significantly reduce levels of airborne volatile organic compounds, cooking odors and common household odors
- Lennox' Healthy Climate® PCO Accessory is mounted internally to the unit cabinet for superior indoor air quality
- Kit contains PCO cartridge, UVA lamp, UVA lampholder assembly, ballast box, wiring harness and all necessary hardware

NOTE - The Healthy Climate® PCO Accessory cannot be used with the Internal Filter Rack Kit. High efficiency filtration external to the return air inlet and the PCO accessory in the unit is required and must be field supplied.

Internal Filter Rack Kits

- Available for 1 in. thick filters. Kit contains filter rails for mounting filters internal to unit
- Filters are not furnished and must be field provided

NOTE - The Internal Filter Rack Kit cannot be used with the Healthy Climate® PCO Accessory.

NOTE - Maximum acceptable filter efficiency is MERV 11.

ELECTRIC HEAT (Option)

- Field install internal to unit cabinet
- 5 - 20 kW sizes
- Helix wound nichrome heating elements exposed directly in air stream resulting in instant heat transfer, low element temperatures and long service life

- Cutoff limit control provides positive protection in case of excessive temperatures.
- Factory assembled with controls installed and wired.

Optional Accessories

Single Point Power Kits

- Control Box used with optional electric heat
- For single power supply connected to multi-circuit electric heat

CONTROLS

Electronic Blower Control

- **Two Stages** - HEAT and COOL (with four different air volume selections for each) are made by simple jumper pins
- ADJUST jumper pin allows approximately 10% higher, normal or 10% lower motor speed selection within (COOL) speeds selected for for fine tuning air volume
- See Blower Data tables

NOTE - HEAT speeds are not affected by jumper change.

- **Cooling Airflow Ramp Up** - At the beginning of a call for cooling, the blower will run at 82% of full airflow for 7.5 minutes

- Improves the system's moisture removal and saves blower power during cooling start

- **Reduced Airflow Operation** - For situations where humidity control is an issue, the variable speed motor can be connected to operate at a 25% reduction of the normal airflow rate

- Variable speed motor interface provides for connection of a thermostat with humidity control or a humidistat on the HUM terminal

NOTE - When connected, the dehumidifier resistor on the interface must be cut.

- The control should be wired to open during high humidity, which will reduce blower airflow

Defrost Control

- Defrost control furnished as standard equipment
- Gives a defrost cycle for every 30, 60 or 90 minutes (adjustable) of compressor "on" time at outdoor coil temperatures below freezing
- Units are quiet-shift enabled. The compressor is de-energized entering and exiting the defrost cycle, reducing system sounds
- Sensor mounted on liquid line determines when defrost cycle is required and also when to terminate cycle
- Anti-short cycle, timed-off control incorporated into the board

24 Volt Transformer

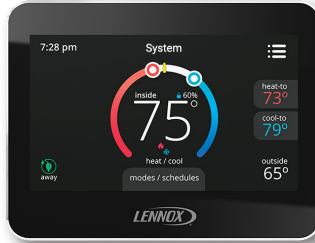
- 40VA transformer furnished and factory installed in control area

FEATURES

Optional Accessories

iComfort® M30 Smart Wi-Fi Programmable Thermostat

- Wi-Fi-enabled, electronic 7-day
- Universal, multi-stage
- 4 Heat/2 Cool
- Auto-changeover
- Dual-fuel control (optional outdoor sensor required)
- Dehumidification control during cooling mode
- Humidification control during heating mode
- Enhanced capabilities:
 - Humidification / Dehumidification
 - Dewpoint measurement and control
 - Humiditol® control
 - Equipment maintenance reminders
- 4.3 in. color touchscreen (measured diagonally)
- LCD display with backlight shows the current and set temperature, time, inside relative humidity, system status (operating mode and schedules) and outside temperature (optional outdoor sensor required)
- Smooth Setback Recovery starts system early to achieve setpoint at start of program period
- Compressor short-cycle protection (5 minutes)
- Four separate schedules available plus Schedule IQ™
- One-Touch Away Mode - Set the cooling and heating setpoints while away
- Smart Away™ - Geo-fencing technology determines when the homeowner is within a predetermined distance from the home to operate the system
- Amazon® Alexa-enabled, smart-home-compatible
- Works with Amazon Echo, Echo Dot and Tap devices
- Wi-Fi remote monitoring and adjustment



NOTE - See the iComfort® M30 Smart Wi-Fi Thermostat Product Specifications bulletin in the Controls section for more information.

Remote Outdoor Temperature Sensor

- Used with the iComfort® M30 Smart Wi-Fi Thermostat
- Outdoor sensor allows thermostat to display outdoor temperature



NOTE - Remote Outdoor Temperature Sensor is recommended for heat pump balance point control to lock out some of the the electric heating elements where two-stage control is applicable.

Thermostat

- Thermostat is not furnished with unit
- Lennox Price Book for selection

CABINET

- Conditioned areas insulated with foil faced insulation
- Minimizes heat loss and reduce operating sound levels
- Powder paint for maximum durability
- Easy service access
- Steel louvered panels provides complete coil protection

Airflow Choice

- Units are shipped in horizontal configuration
- Can be field converted to downflow (vertical) airflow with optional Downflow Conversion Kit

Electrical Inlets and Service Valves

- Field wiring inlets are located in one central area of the cabinet
- See dimension drawing
- Gauge ports are located inside the cabinet

Downflow Conversion Kit

- Required for field conversion to downflow (vertical) air.
- Consists of 2 duct covers to block off horizontal air openings on side of unit
- Drain pan overflow switch monitors condensate level in drain pan
- Shuts down unit if drain becomes clogged

Lifting Brackets

- Available to facilitate rigging of the unit

Clip Curb (Full Perimeter)

- Interlocking tabs fasten corners together
- No tools required
- Available in 8 and 14 inch heights
- Shipped knocked down

Adjustable Pitch Roof Curb (Full Perimeter)

- Fully adjustable pitch curb provides a level platform for packaged units
- Allows flexible installations on roofs with sloped or uneven angles
- Adjustable from 2/12 to 6/12 pitch
- Unit hold-down brackets secure packaged unit to curb
- Constructed of heavy-gauge galvanized steel with fully welded seams and corners
- Rounded corners on flange prevent damage to roof shingles
- Built-in drip edge
- IAPMO/UMC listed
- CBC 2013 compliant (California)
- Seismic rating - Ss=3.73 Ip=1.5, wind rating - 155mph
- Maximum load rating – 800 lbs.

SPECIFICATIONS

General Data		Model No.	LRP16HP24	LRP16HP36	LRP16HP48	LRP16HP60
		Nominal Tonnage	2	3	4	5
Cooling / Heating Performance	Cooling	Total capacity - Btuh	23,000	35,000	47,000	57,000
		Total unit watts	1910	2910	3910	4950
		¹ SEER (Btuh/Watt)	16.0	16.0	16.0	15.5
		EER (Btuh/Watt)	12.0	12.0	12.0	11.5
	High Temp. Heat	Total capacity - Btuh	22,000	34,000	46,000	56,000
		Total unit watts	1791	2770	3740	4440
		COP	3.60	3.60	3.60	3.70
		HSPF (Region IV)	8.20	8.20	8.20	8.20
	Low Temp. Heat	Total capacity - Btuh	11,900	19,700	26,600	37,200
		Total unit watts	1480	2530	3500	4250
		COP	2.36	2.28	2.23	2.57
		² Sound Rating Number (dB)	71	71	74	74
Refrigerant	Type	R-410A	R-410A	R-410A	R-410A	
	Charge	5 lbs. 5 oz.	8 lbs. 0 oz.	10 lbs. 8 oz.	10 lbs. 8 oz.	
Condensate drain size (fpt) - in.			3/4	3/4	3/4	3/4
Outdoor Coil	Net Face Area - sq. ft.	16.3	15.5	18.6	18.6	
	Tube diameter - in.	5/16	5/16	5/16	5/16	
	Number of Rows	1	2	2	2	
	Fins per in.	22	22	22	22	
Outdoor Coil Fan	Motor horsepower	1/2	1/2	1/2	1/2	
	Diameter - in.	22	22	24	24	
	Number of blades	3	3	3	3	
Indoor Coil	Net Face Area - sq. ft.	4.4	4.4	6.8	6.8	
	Tube Diameter - in.	5/16	3/8	3/8	3/8	
	Number of Rows	3	3	3	3	
	Fins per Inch	15	15	15	15	
Indoor Blower	Blower wheel size dia. x width - in.	10 x 6	10 x 8	10 x 10	12 x 9	
	Motor horsepower	1/2	1/2	3/4	1	
Net weight of basic unit - lbs.			375	410	490	505
Shipping weight of basic unit (1 Pkg.) - lbs.			438	473	563	578
Electrical characteristics (60 Hz)			208/230V-1ph-60hz			

¹ AHRI Certified to AHRI Standard 210/240:

Cooling Ratings - 95°F outdoor air temperature and 80°F db/67°F wb entering indoor coil air.

High Temperature Heating Ratings - 47°F db/43°F wb outdoor air temperature and 70°F entering indoor coil air.

Low Temperature Heating Ratings - 17°F db/15°F wb outdoor air temperature and 70°F entering indoor coil air.

² Sound Rating Number rated in accordance with test conditions included in AHRI Standard 270.

OPTIONAL ACCESSORIES - ORDER SEPARATELY

		Model No.	LRP16HP24	LRP16HP36	LRP16HP48	LRP16HP60
Compressor Crankcase Heater		11X27	•	•	•	•
Compressor Hard Start Kit		10J42	•	•		
		12J90			•	•
Downflow Conversion Kit		11U80	•	•		
		11U81			•	•
Electric Heat Size - 208/240V-1ph	5 kW - PHK05BP	10W47	•	•	•	•
	7.5 kW - PHK07BP	10W48	•	•	•	•
	10 kW - PHK10BP	10W49	•	•	•	•
	15 kW - PHK15BP	10W50		•	•	•
	20 kW - PHK20BP	10W51			•	•
¹ Internal Filter Rack Kit (filters not furnished)	(1) 20 x 20 + (1) 14 X 20	11U73	•	•		
	(2) 20 x 20	11U74			•	•
Lifting Brackets		11U76	•	•	•	•
Clip Curbs	8 in. Height	14W71	•	•		
		14W72			•	•
	14 in. Height	14V68	•	•		
		14V69			•	•
Adjustable Pitch Roof Curb		Y7975	•	•		
		Y7976			•	•
Single Point Power Kits	For 5 kW Electric Heat ASPWR813-10	13W88	•	•	•	•
	For 7.5 kW Electric Heat ASPWR814-10	13W89	•	•	•	•
	For 10 kW Electric Heat ASPWR815-10	13W90	•	•	•	•
	For 15-20 kW Electric Heat ASPWR816-10	13W91		•	•	•
² Healthy Climate® PCO Accessory		Y7960	•	•	•	•

MAINTENANCE SUPPLIES - ORDER SEPARATELY

Healthy Climate® PCO Accessory Maintenance Kit (Includes PureAir® Cartridge and UVA lamp)		Y7972	•	•	•	•
-------------------------------------------------------------------------------------------	--	-------	---	---	---	---

CONTROLS - ORDER SEPARATELY

iComfort® M30 Smart Wi-Fi Thermostat		15Z69	•	•	•	•
³ Outdoor Air Temperature Sensor		X2658	•	•	•	•

¹ Filters are not furnished and must be field provided. Maximum acceptable filter efficiency is MERV 11.

² Filter Rack Kit cannot be used with the Healthy Climate® PCO Accessory. High efficiency filtration between the return air inlet and the PCO accessory is required and must be field supplied.

³ Remote Outdoor Temperature Sensor is recommended for heat pump balance point control and to lock out some of the the electric heating elements where two-stage control is applicable. Also allows the thermostat to display outdoor temperature.

ELECTRICAL/ELECTRIC HEAT DATA

Model No.		LRP16HP24		LRP16HP36		LRP16HP48		LRPHP60		
Line voltage data - 60hz - 1 phase		208/230V		208/230V		208/230V		208/230V		
Compressor	Rated Load Amps	11.7		16.1		21.2		27.1		
	Locked Rotor Amps	58.3		83.0		104.0		152.9		
Outdoor Fan Motor	Full Load Amps	1.2		1.4		2.3		2.4		
Indoor Blower Motor	Full Load Amps	1.7		3.6		4.5		5.5		
¹ Maximum Overcurrent Protection	Voltage		208V	240V	208V	240V	208V	240V	208V	240V
	Unit Only	Circuit 1	25	25	40	40	50	50	60	60
	5 kW	Circuit 1	25	30	30	35	30	35	35	35
	7.5 kW	Circuit 1	40	45	40	45	40	45	45	50
	10 kW	Circuit 1	50	60	50	60	60	60	60	60
	³ 15 kW	Circuit 1	---	---	50	60	60	60	60	60
		Circuit 2	---	---	25	30	25	30	25	30
	³ 20 kW	Circuit 1	---	---	---	---	60	60	60	60
Circuit 2		---	---	---	---	50	60	50	60	
¹ Maximum Overcurrent Protection with Optional Single Point Power Supply	5 kW		45	50	50	60	70	70	80	90
	7.5 kW		60	60	60	70	80	80	90	100
	10 kW		70	80	80	80	90	90	100	110
	15 kW		---	---	100	110	110	125	110	125
	20 kW		---	---	---	---	125	150	150	150
² Minimum Circuit Ampacity	Unit Only	Circuit 1	18.0	18.0	25.6	25.6	33.8	33.8	42.3	42.3
	5 kW	Circuit 1	24.7	28.2	27.1	30.5	28.2	31.7	29.5	32.9
	7.5 kW	Circuit 1	36.0	41.2	38.3	43.6	39.5	44.7	40.7	45.9
	10 kW	Circuit 1	47.3	54.2	49.6	56.6	50.8	57.7	52.0	59.0
	³ 15 kW	Circuit 1	---	---	49.6	56.6	50.8	57.7	52.0	59.0
		Circuit 2	---	---	22.6	26.0	22.6	26	22.6	26.0
	³ 20 kW	Circuit 1	---	---	---	---	50.8	57.7	52.0	59.0
		Circuit 2	---	---	---	---	45.1	52.1	45.1	52.1
² Minimum Circuit Ampacity with Optional Single Point Power Supply	5 kW		40.6	44.0	48.2	51.6	56.4	59.8	64.9	68.3
	7.5 kW		51.8	57.1	59.4	64.7	67.6	72.8	76.1	81.3
	10 kW		63.1	70.1	70.7	77.7	78.9	85.9	87.4	94.3
	15 kW		---	---	93.3	103.7	101.5	111.9	110.0	120.4
	20 kW		---	---	---	---	124.1	137.9	132.5	146.4

NOTE - All units have a minimum Short Circuit Current Rating (SCCR) of 5000 amps.

NOTE - Circuit 1 Minimum Circuit Ampacity includes the Blower Motor Full Load Amps.

NOTE- Extremes of operating range are plus and minus 10% of line voltage.

¹ HACR type breaker or fuse.

² Refer to National or Canadian Electrical Code manual to determine wire, fuse and disconnect size requirements.

³ A separate compressor circuit is required.

ELECTRIC HEAT CAPACITIES

Input Voltage	5 kW			7.5 kW			10 kW			15 kW			20 kW		
	No of Steps	kW Input	KBtuh Output	No of Steps	kW Input	KBtuh Output	No of Steps	kW Input	KBtuh Output	No of Steps	kW Input	KBtuh Output	No of Steps	kW Input	KBtuh Output
208	1	3.8	12.8	1	5.6	19.2	1	7.5	25.6	1	11.2	38.2	1	15	51.2
220	1	4.2	14.3	1	6.3	21.5	1	8.4	28.7	1	12.6	43	1	16.8	57.3
230	1	4.6	15.7	1	6.9	23.5	1	9.2	31.3	1	13.8	47	1	18.4	62.7
240	1	5	17.1	1	7.5	25.6	1	10	34.1	1	15	51.2	1	20	68.2

BLOWER DATA

LRP16HP24 Blower Performance

0 through 0.80 in. w.g. External Static Pressure Range

"ADJUST" Jumper Setting	Blower Control Jumper Speed Positions											
	"COOL" Speed - cfm				"HEAT" Speed - cfm				"CONTINUOUS FAN" Speed - cfm			
	A	¹ B	C	D	A	¹ B	C	D	A	B	C	D
+	1100	880	660	440	1150	1035	690	690	550	440	330	220
NORM	1000	800	600	400	1000	900	600	600	500	400	300	200
—	900	720	540	360	1000	900	600	600	450	360	270	180

¹ Factory Settings.

NOTE - All air data is measured external to unit without air filters.

NOTE - 1st Stage airflow is 70% of 2nd Stage airflow (full capacity) in cooling mode.

LRP16HP36 Blower Performance

0 through 0.80 in. w.g. External Static Pressure Range

"ADJUST" Jumper Setting	Blower Control Jumper Speed Positions											
	"COOL" Speed - cfm				"HEAT" Speed - cfm				"CONTINUOUS FAN" Speed - cfm			
	A	¹ B	C	D	A	¹ B	C	D	A	B	C	D
+	1430	1320	1100	880	1495	1380	1150	1150	715	660	550	440
NORM	1300	1200	1000	800	1300	1250	1000	1000	650	600	500	400
—	1170	1080	900	720	1300	1200	1000	1000	585	540	450	360

¹ Factory Settings.

NOTE - All air data is measured external to unit without air filters.

NOTE - 1st Stage airflow is 70% of 2nd Stage airflow (full capacity) in cooling mode.

LRP16HP48 Blower Performance

0 through 0.80 in. w.g. External Static Pressure Range

"ADJUST" Jumper Setting	Blower Control Jumper Speed Positions											
	"COOL" Speed - cfm				"HEAT" Speed - cfm				"CONTINUOUS FAN" Speed - cfm			
	A	¹ B	C	D	A	¹ B	C	D	A	B	C	D
+	1980	1760	1540	1320	2070	1840	1610	1610	990	880	770	660
NORM	1800	1600	1400	1200	1800	1600	1400	1400	900	800	700	600
—	1620	1440	1260	1080	1800	1600	1400	1400	810	720	630	540

¹ Factory Settings.

NOTE - All air data is measured external to unit without air filters.

NOTE - 1st Stage airflow is 70% of 2nd Stage airflow (full capacity) in cooling mode.

LRP16HP60 Blower Performance

0 through 0.80 in. w.g. External Static Pressure Range

"ADJUST" Jumper Setting	Blower Control Jumper Speed Positions											
	"COOL" Speed - cfm				"HEAT" Speed - cfm				"CONTINUOUS FAN" Speed - cfm			
	A	¹ B	C	D	A	¹ B	C	D	A	B	C	D
+	2200	1980	1760	1540	2300	2070	1840	1840	1100	990	880	770
NORM	2000	1800	1600	1400	2000	1800	1600	1600	1000	900	800	700
—	1800	1620	1440	1260	2000	1800	1600	1600	900	810	720	630

¹ Factory Settings.

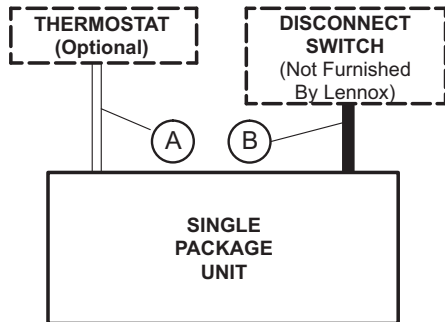
NOTE - All air data is measured external to unit without air filters.

NOTE - 1st Stage airflow is 70% of 2nd Stage airflow (full capacity) in cooling mode.

HEATING RATINGS

Model	Outdoor Temp - DB/WB °F									
	0/0		17/15		35/33		47/43		62/56	
	Btuh	kW	Btuh	kW	Btuh	kW	Btuh	kW	Btuh	kW
LRP16HP24	6100	1.30	11,900	1.48	18,100	1.67	22,100	1.80	27,200	1.95
LRP16HP36	11,100	2.36	19,700	2.53	28,700	2.71	34,700	2.83	42,200	2.98
LRP16HP48	14,900	3.33	26,600	3.50	39,100	3.68	47,400	3.81	57,800	3.96
LRP16HP60	24,800	4.06	37,200	4.25	50,300	4.45	59,000	4.59	69,900	4.75

FIELD WIRING



A - Seven Wire Low Voltage (Electronic)
 B - Two Wire Power (See Electrical Data Table)

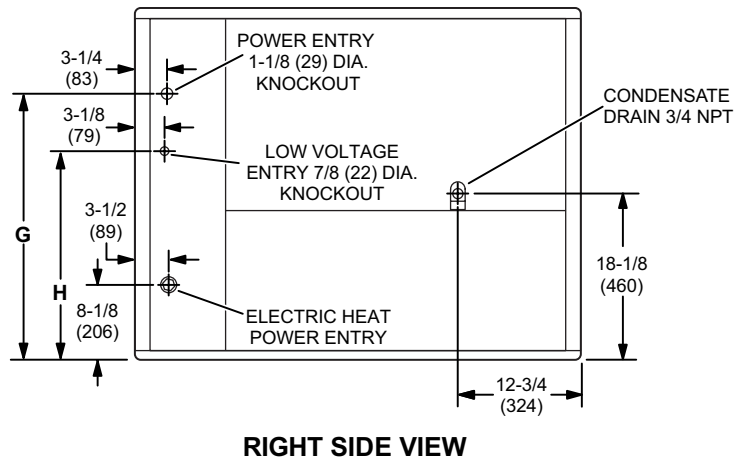
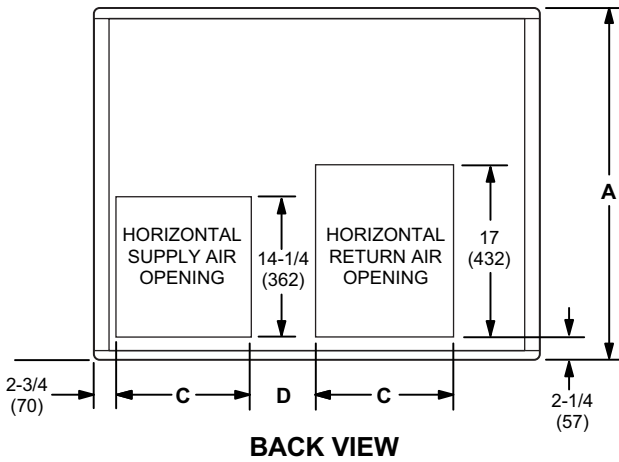
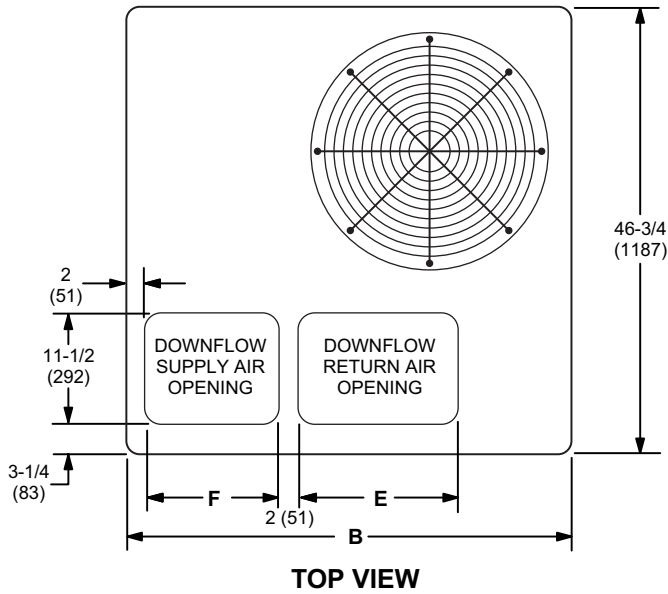
If multiple disconnects are used on units with electric heat; there must be two-wire power provided for each disconnect

- Field Wiring Not Furnished -

INSTALLATION CLEARANCES

	in.	mm
Front	24	610
Right Side (blower access)	24	610
Left Side (evaporator coil access)	24	610
Back	0	0
Top	48	1219

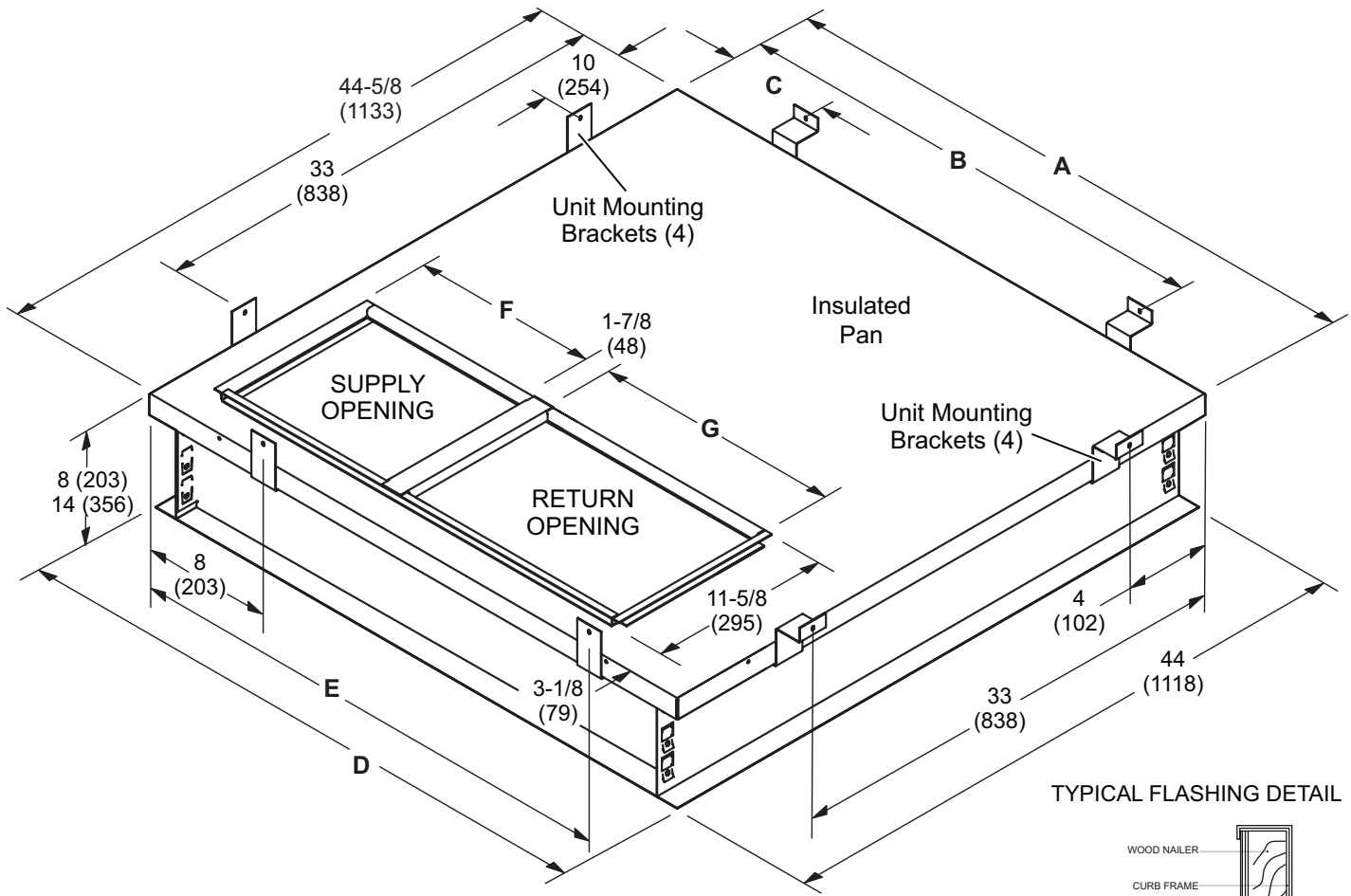
DIMENSIONS - UNIT



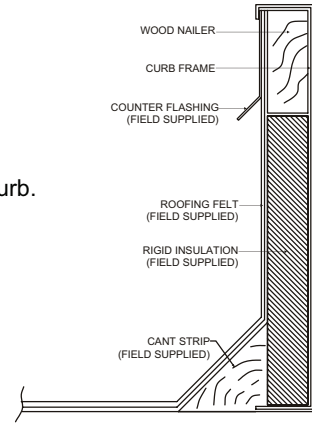
Model No.	A		B		C		D		E	
	in.	mm	in.	mm	in.	mm	in.	mm	in.	mm
LRP16HP24, 36	36-7/8	937	46-3/4	1187	13-3/8	340	5-7/8	149	16-3/4	425
LRP16HP48, 60	40-7/8	1038	55-1/4	1403	18-1/8	467	4-5/8	117	19-3/4	502
Model No.	F		G		H					
	in.	mm	in.	mm	in.	mm				
LRP16HP24, 36	14	356	28-1/8	714	22-1/8	562				
LRP16HP48, 60	19-1/2	495	32-1/8	816	26-1/8	664				

DIMENSIONS - ACCESSORIES

CLIP CURB



TYPICAL FLASHING DETAIL

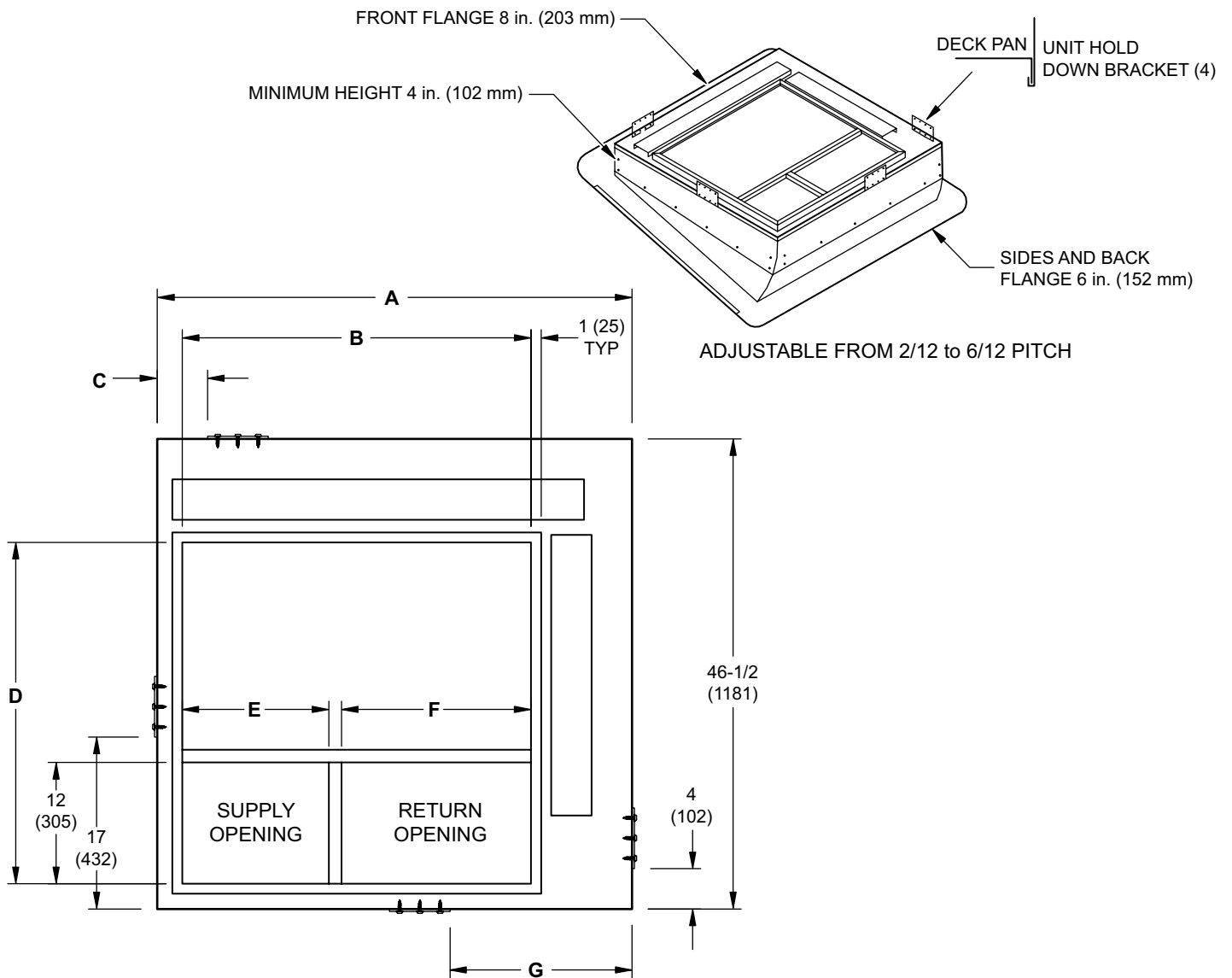


NOTE - Roof deck may be omitted within confines of curb.

Usage	A		B		C		D		E	
	in.	mm	in.	mm	in.	mm	in.	mm	in.	mm
24, 36	44-5/8	1133	43	1092	18	457	44	1118	37	940
48, 60	53-1/8	1349	51	1295	24	610	52-1/2	1334	41	1041
Usage	F		G							
	in.	mm	in.	mm						
24, 36	14	356	16-3/4	425						
48, 60	19-1/2	495	19-3/4	502						

DIMENSIONS - ACCESSORIES

ADJUSTABLE PITCH ROOF CURB



Usage	A		B		C		D	
	in.	mm	in.	mm	in.	mm	in.	mm
24, 36	47	1194	34-1/2	876	5	127	33-3/4	857
48, 60	55-1/4	1403	42-3/8	1076	10	254	33	838
Model No.	E		F		G			
	in.	mm	in.	mm	in.	mm		
24, 36	14-1/2	368	18-3/4	476	18	457		
48, 60	20	508	21-1/8	537	18-1/4	464		

REVISIONS

Sections	Description of Change
Specification	Model number changed to incorporate "V" blower motors.



Visit us at www.lennox.com

For the latest technical information, www.LennoxPros.com

Contact us at 1-800-4-LENNOX

NOTE - Due to Lennox' ongoing commitment to quality, Specifications, Ratings and Dimensions subject to change without notice and without incurring liability. Improper installation, adjustment, alteration, service or maintenance can cause property damage or personal injury. Installation and service must be performed by a qualified installer and servicing agency.

©2019 Lennox Industries, Inc.