

**Job:**  
**Location:**  
**Schedule No.:**  
**System Designation:**

**Engineer:**  
**Architect:**  
**Location:**  
**Date:**

For:    Reference    Approval    Review    Construction

## Outside Air Indoor Unit

### FEATURES

- Pre Heat Function
- Auto Addressing
- Auto Restart
- Electronic Expansion Valve
- Factory Secondary Drain Pan
- Brazed Connections
- LED Display
- Sectional Filter
- High-Efficiency DC Motor
- Built-In Dry Contact Relays
- Refrigerant R-410A
- Five capacity sizes from 36,000 to 96,000 Btu/h

### WARRANTY

- 10-year limited warranty.\*See warranty for details.

### SPECIFICATIONS

#### PERFORMANCE

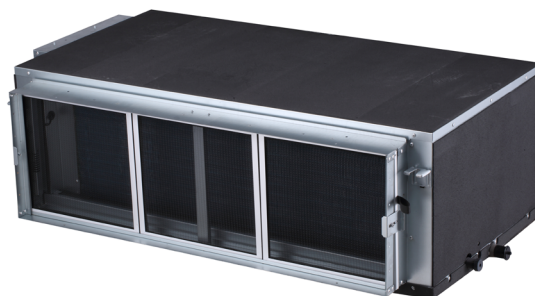
Cooling Capacity <sup>1</sup> (Btu/h)		72000
Heating Capacity <sup>1</sup> (Btu/h)		57000
Airflow (CFM)	High	1059
	Medium	971
	Low	882
External Static Pressure (in. w.g.)		0.2~1.0
Sound (dBA) (ESP 50Pa)	High	52.5
	Medium	47.4
	Low	44.4

#### ELECTRICAL DATA

Power Supply (Volts/Hertz/Phase)	208-230/60/1
Minimum Circuit Ampacity (MCA) (A)	5.0
Maximum Overcurrent Protection (MOP) (A)	15
Cooling Power Input <sup>2</sup> (W)	152
Cooling Rated Current (A)	1.4
Heating Power Input <sup>2</sup> (W)	115
Heating Rated Current (A)	1
Indoor Fan Motor Input (W)	60*2(H:50Pa)

#### DIMENSIONS

Unit Dimensions (in)	Width	56-3/4
	Height	20.3/4
	Depth	38-1/4
Liquid Pipe Connection (in) (I.D.)		3/8
Gas Pipe Connection (in) (I.D.)		7/8
Condensate Drain Connection - Drain Pump (in) (O.D.)		/
Condensate Drain Connection - Gravity (in) (O.D.)		1 MPT
Net Weight (lb)		275
Shipping Weight (lb)		375



### OPTIONAL ACCESSORIES

Non-Programmable Controller	V0STAT54P-3
Programmable Wired Controller	V0STAT51P-3
Infrared Wireless Controller	V0STAT52P-1
Occupancy Sensor	V0SNSR78P-3
Remote Sensor	V0SNSR00P-1
Hotel Keycard Interface	V0CTRL88P-1

### NOTES

1. Cooling and Heating capacity data is rated at the following conditions:  
Cooling: 91°FDB / 82°FWB  
Heating: 32°FDB / 26°FWB.
2. Power Input values are rated at high fan speed.

**DIMENSIONAL DRAWINGS - INCHES (MM)**

