

Job:
 Location:
 Schedule No.:
 System Designation:

Engineer:
 Architect:
 Location:
 Date:

For: Reference Approval Review Construction

Vertical Air Handler Ducted Indoor Unit

FEATURES

- Pre Heat Function
- Auto Addressing
- Auto Restart
- Optional Electric Heat
- Electronic Expansion Valve
- High-Efficiency DC Motor
- Four Built-In Dry Contacts Relays
- Brazed Connections
- Refrigerant R-410A
- Eight Capacity Sizes from 12,000 to 60,000 Btu/h

WARRANTY

- 10-year limited warranty.*See warranty for details.

SPECIFICATIONS

PERFORMANCE

Cooling Capacity ¹ (Btu/h)		30,000
Heating Capacity ¹ (Btu/h)		34,000
Airflow (CFM)	Low/Medium/High	700/850/1000
External Static Pressure (in. WC)		0~0.8
Sound Pressure (dBA)	Low/Medium/High	43.7/48/47.5
Vertical Install		
Sound Pressure (dBA)	Low/Medium/High	40.6/44/56.6
Horizontal Install		

ELECTRICAL DATA

Power Supply (Volts/Phase/Hertz)	208/230V-1Ph-60Hz
Minimum Circuit Ampacity (MCA)	3.8
Max. Overcurrent Protection (MOCP)	15
Cooling Power Input ² (W)	165
Cooling Rated Current (A)	1.5
Heating Power Input ² (W)	166
Heating Rated Current (A)	1.5
Indoor Fan Motor Input (W)	151(H:50Pa)

DIMENSIONS

Unit Dimensions (in)	Height	45-3/4
	Width	19-3/4
	Depth	21-5/8
Liquid Pipe Connection (in)		3/8
Gas Pipe Connection (in)		5/8
Condensate Drain Connection (in)		3/4 NPT(I.D.)
Unit Shipping Weight (lb)		147
Unit Net Weight (lb)		123

NOTES

1. Cooling and Heating capacity data is rated at the following conditions:
 Cooling: 80°FDB / 67°FWB Indoor, 95°FDB
 Outdoor Heating: 70°FDB Indoor, 47°FDB / 43°FWB Outdoor.
2. Power Input values are rated at high fan speed.



ELECTRIC HEATER

5 kW (V8EH0050P-1P)

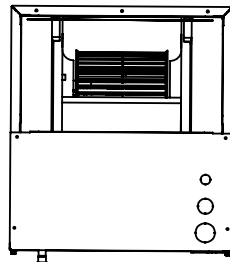
7.5 kW (V8EH0080P-1P)

OPTIONAL ACCESSORIES

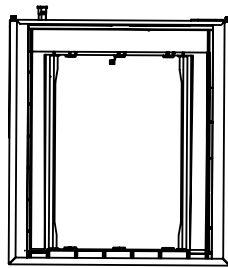
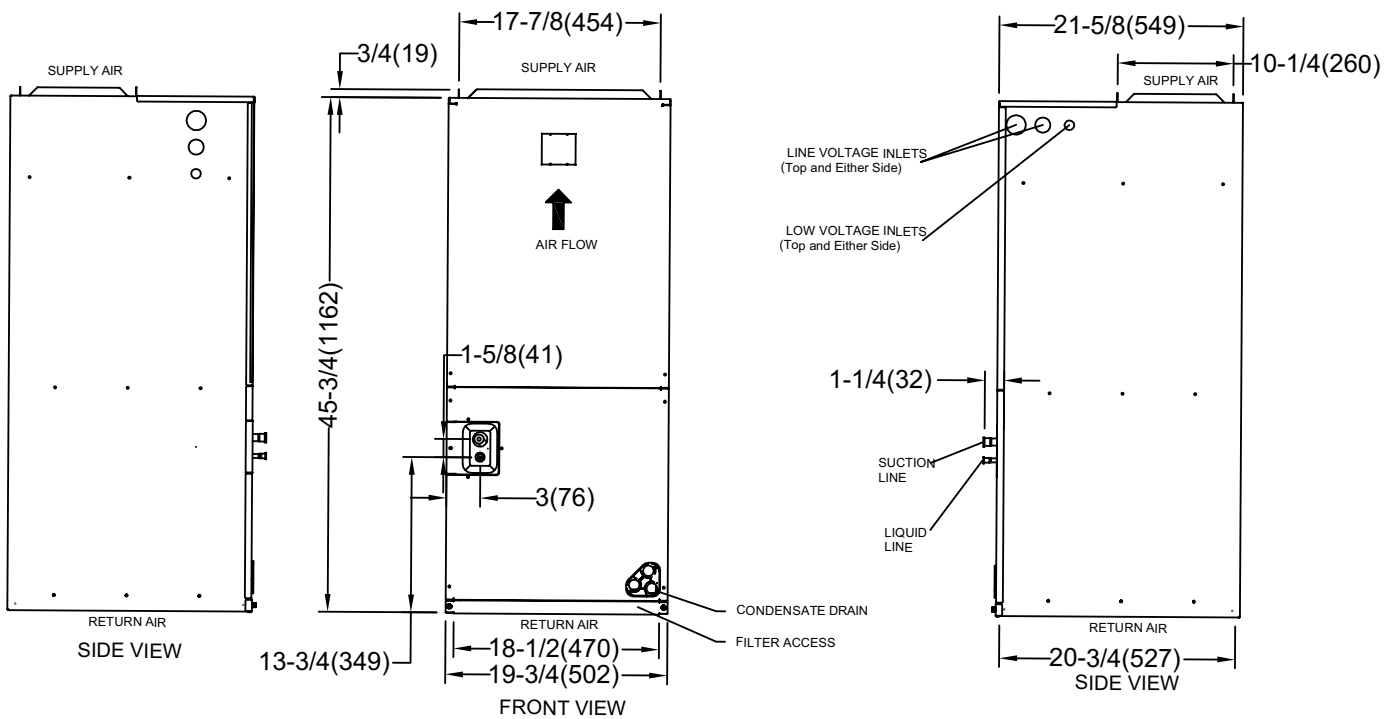
Non-Programmable Controller	V0STAT54P-3
Programmable Wired Controller	V0STAT51P-3
Infrared Wireless Controller	V0STAT52P-1
Occupancy Sensor	V0SNSR78P-3
Hotel Keycard Interface	V0CTRL88P-1
HHE Relay Kit	V0CTRL92P-3
Condensate Pumps (Reference Condensate Pump Selection Guide)	-



DIMENSIONAL DRAWINGS - INCHES (MM)



TOP VIEW



BOTTOM VIEW