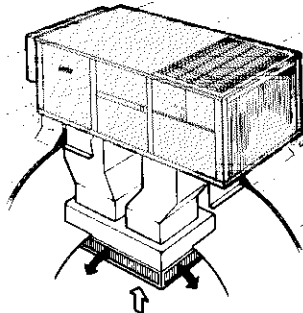




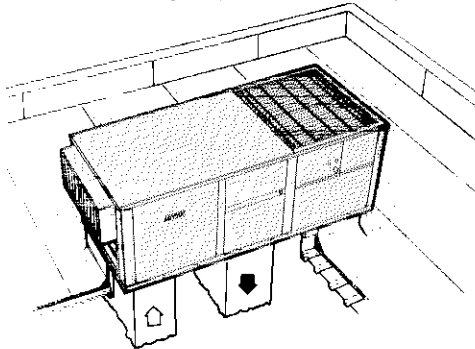
**CHP11-1853 & CHP11-2753
SINGLE PACKAGE HEAT PUMPS**
*180,000 to 240,000 Btuh Cooling Capacity
*185,000 to 240,000 Btuh Heating Capacity
68,000 to 256,000 Btuh Optional Electric Heat
175,000 to 600,000 Btuh Optional Hot Water Heat

*At ARI Standard 240 Test Conditions

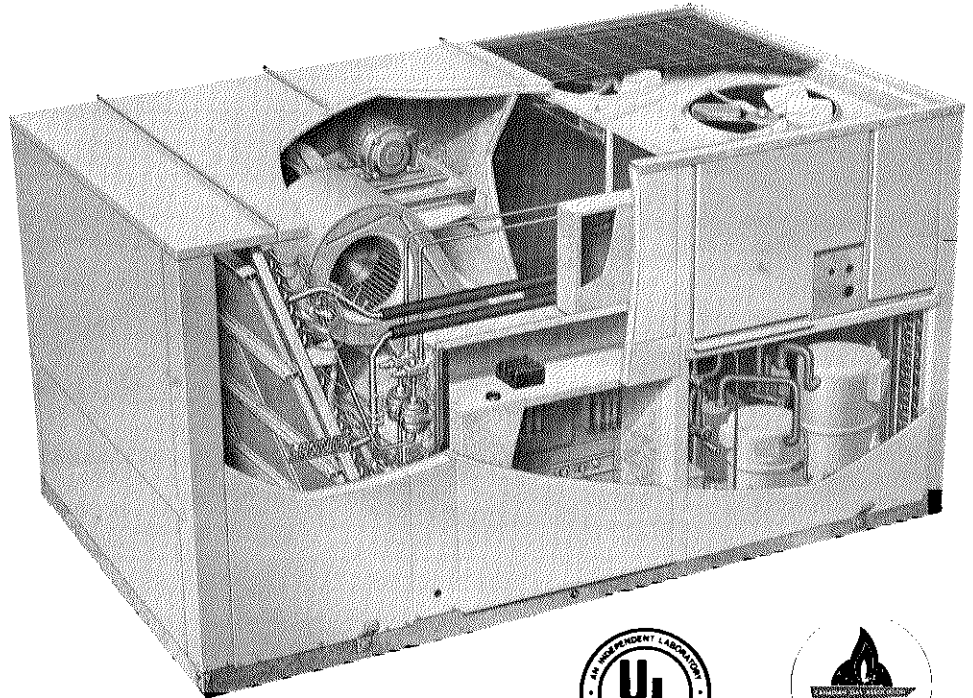
Typical Applications



Rooftop Installation with
Combination Ceiling Supply and Return Air System



Rooftop Installation with
Double Duct Air Distribution System



High Efficiency Rooftop Units Feature Energy Saving Operation, Low Operating Cost and Application Flexibility

Lennox single package CHP11 heat pump units are designed for rooftop installation with bottom or end handling of supply and return air. A separate roof mounting frame (optional) mates to the bottom of the unit and when flashed into the roof permits weather-proof duct connection and entry into the structure. No additional roof curbing or flashing is required. The roof mounting frame is shipped knocked down and must be field assembled. Units are available with supplemental electric or hot water heat. Four voltage options provide a choice for power supply requirements.

Energy and operational cost saving features include: Demand oriented solid-state electronic control system. Dual refrigerant circuits to control system capacity and reduce energy usage. POWER SAVER® option will provide "free cooling" by using outdoor air in lieu of mechanical refrigeration. POWER SAVER Enthalpy control provides maximum use of the outdoor air for "free" cooling. Staging of electric heaters and modulating control of the hot water heat minimizes energy usage for the supplemental heating options.

The insulated single cabinet houses highly efficient air cooled DX cooling, powerful belt drive blower, air filters and optional POWER SAVER dampers or minimum fresh air dampers and exhaust dampers. Energy conserving POWER SAVER dampers are available

factory or field installed. Exhaust dampers and minimum fresh air dampers (manual or automatic) require field installation.

The complete factory sealed DX cooling consists of two independent refrigeration systems including separate Lennox compressors and their independent outdoor coil and fan with a separate circuit in the single indoor coil. Lennox augments its reliable operating components with a full complement of standard comfort and safety controls. Thermostat is not furnished and must be ordered extra. Separate supply and return air double duct, combination ceiling supply and return air duct, or horizontal (end) duct systems are applicable to the units. A choice of RTD stepdown or FD flush model diffusers are available for ceiling supply and return air distribution systems.

Units have been tested in the Lennox Laboratory and rated at ARI Standard 340 test conditions. Blower data is from unit tests in the Lennox air test chamber. Units are C.G.A. certified, U.L. Listed and components within are bonded for grounding to meet safety standards for servicing required by U.L. and NEC.

Units are shipped completely factory assembled, piped, and wired. In addition, each unit is test operated at the factory insuring unit dependability and reducing start-up problems.

SPECIFICATIONS

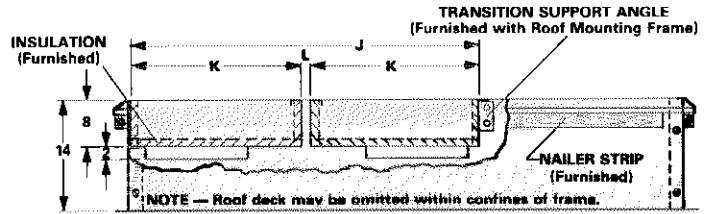
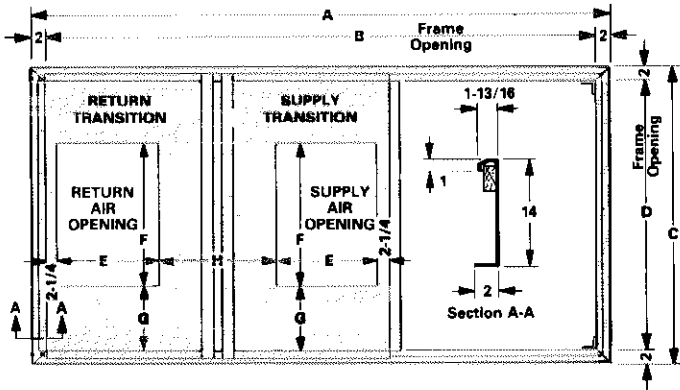
Model Number		CHP11-1853	CHP11-2753	
*At ARI Standard 340 Test Conditions	Cooling Ratings	Cooling Capacity (Btuh)	180,000	240,000
		Total unit watts	22,000	28,800
		EER (Btuh/Watts)	8.2	8.3
		Dehumidifying capacity	26%	26%
	High Temperature Heating Ratings	Total capacity (Btuh)	185,000	240,000
		Total unit watts	19,300	24,700
		C.O.P.	2.8	2.8
	Low Temperature Heating Ratings	Total capacity (Btuh)	108,000	150,000
		Total unit watts	14,600	20,900
C.O.P.		2.1	2.1	
Refrigerant (22) charge		49 lbs. — 8 oz.	65 lbs. — 0 oz.	
Indoor Coil Blower	Blower wheel nominal diam. x width (in.)	15 x 9	15 x 15	
	Motor horsepower (minimum-maximum)	5	5 — 7-1/2	
Indoor Coil	Net face area (sq. ft.)	17.2	23.5	
	Tube diam. (in.) & No. of rows	1/2 — 4	1/2 — 4	
	Fins per inch	13	15	
Outdoor Coil	Net face area (sq. ft.)	31.9 (total)	38.9	
	Tube diam. (in.) & No. of rows	(1) 1/2 — 3 & (1) 1/2 — 4	1/2 — 4	
	Fins per inch	15	15	
Outdoor Coil Fans	Diameter (in.) & No. of blades	(1) 24 — 4 and (1) 26 — 5	(2) 26 — 5	
	Air volume (cfm) (factory setting)	(1) 4400 and (1) 7000	(2) 6800	
	Motor horsepower	(1) 1/2 and (1) 1	(2) 1	
	Motor watts (factory setting)	(1) 480 and (1) 1100	(2) 1000	
Condensate drain size mpt (in.)		(2) 1-1/4	(2) 1-1/4	
No. & size of filters (in.)		(9) 16 x 20 x 1	(11) 16 x 20 x 1	
Net weight of basic unit (lbs.) (1 Package)		2300	2900	
Optional Electric Heat	Model No.	ECH11-185	ECH11-275	
	kw input range	20-30-45-60	30-45-60-75	
Optional Hot Water Coil	Model No. & Net Weight	HWC11-185 (120 lbs.)	HWC11-275 (130 lbs.)	
	**Heating capacity range (Btuh)	175,000 — 500,000	200,000 — 600,000	
	Net face area (sq. ft.)	9.9	11.2	
	Tube diameter (in.) — No. of rows	1/2 — 2	1/2 — 2	
		16	16	
Optional Roof Mounting Frame — (Net weight)		RMF11-185 (265 lbs.)	RMF11-275 (315 lbs.)	
		RMFH11-185 (375 lbs.)	RMFH11-275 (440 lbs.)	
		RMFA11-185 (470 lbs.)	RMFA11-275 (510 lbs.)	
Optional Power Saver & Controls — (Net weight)		PSD11-185 (235 lbs.)	PSD11-275 (290 lbs.)	
Optional Gravity Exhaust Dampers (Net weight)		GED11-185 (25 lbs.)	GED11-275 (30 lbs.)	
Optional Power Exhaust Dampers	Model No. — (Net weight)		PED11-185 (110 lbs.)	PED11-275 (150 lbs.)
	Exhaust Fans	Diameter (in.) & No. of blades	(2) 18 — 5	(3) 18 — 5
		Total air volume (cfm)	5050	7050
		Motor horsepower	(2) 1/4	(3) 1/4
		Watts input (total)	730	1100
Optional Ceiling Supply & Return Step-Down Diffuser — (Net weight)		RTD11-185 (120 lbs.)	RTD11-275 (170 lbs.)	
Optional Ceiling Supply & Return Flush Diffuser — (Net weight)		FD11-185 (120 lbs.)	FD11-275 (170 lbs.)	
Optional Ceiling Supply & Return Transitions — (Net weight)		SRT11-185 (70 lbs.)	SRT11-275 (80 lbs.)	
Optional Fresh Air Damper & Filter Size (in.) — (Net weight)		OAD11-185 (90 lbs.) 1—25x27x1	OAD11-275 (115 lbs.) 1—26x31x1	
Optional Automatic OAD11 Damper Kit — (Net weight)		99C94 (15 lbs.)	99C94 (15 lbs.)	
Optional Remote Status Panel		SP11 (12F83)	SP11 (12F83)	
Optional Remote Switching Status Panel		SSP11 (12F84)	SSP11 (12F84)	
Electrical characteristics		200 to 575 volt — 60 hertz — 3 phase		

*Rated in accordance with ARI Standard 340; 450 cfm (maximum) evaporator air volume per ton of cooling, 95°F outdoor air temperature and 80°F db/67°F wb entering evaporator air.

** Capacity range shown is possible with varying supply conditions and air volumes.

DIMENSIONS (inches)

RMF11 ROOF MOUNTING FRAME WITH CEILING SUPPLY AND RETURN TRANSITION

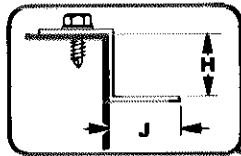


Model No.	A	B	C	D	E	F	G	H	J	K	L
RMF11-185	108-1/8	104-1/8	59-5/8	55-5/8	18	36	9-13/16	25-3/4	66-1/4	32-7/8	1/2
RMF11-275	133-11/16	129-11/16	69-5/8	65-5/8	24	48	8-13/16	19-3/4	72-1/4	35-7/8	1/2

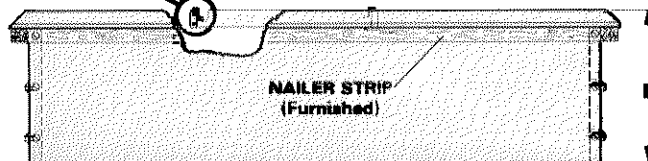
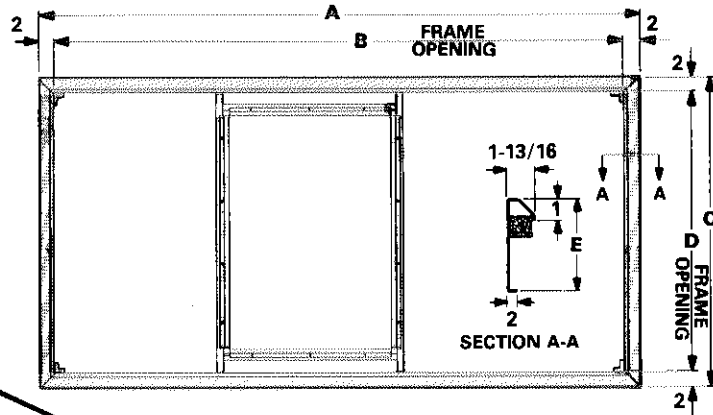
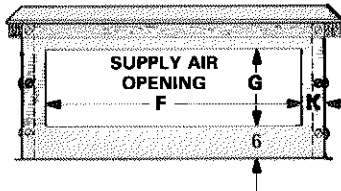
RMFH11 HORIZONTAL ROOF MOUNTING FRAME

PLENUM SUPPORT ANGLE DETAIL

Optional duct connection support angles (furnished) for field installation around perimeter of unit supply air opening.



NOTE - Return air duct connection is to unit. Refer to unit dimension drawing for location and size.



Model No.	A	B	C	D	E	F	G	H	J	K
RMFH11-185	108-1/8	104-1/8	59-5/8	55-5/8	30	48	17	5/8	11/16	3-13/16
RMFH11-275	133-11/16	129-11/16	69-5/8	65-5/8	30	58	17	5/8	11/16	3-13/16