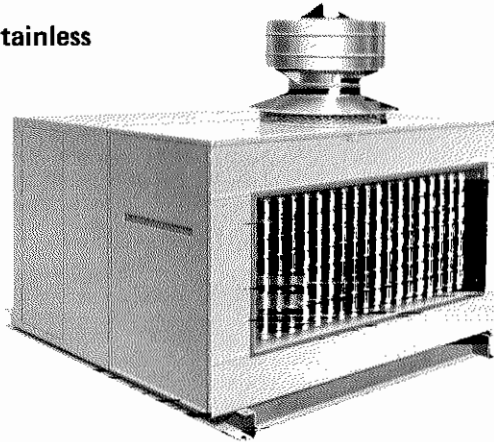
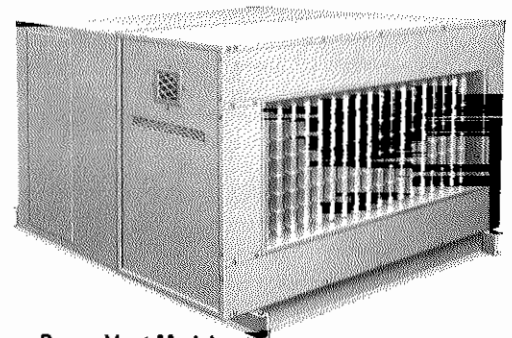


LENNOX[®] HEATING—VENTILATING—MAKE-UP AIR NATURAL GAS FIRED ROOFTOP SYSTEMS LHF—LMU—LHV SERIES 100,000 to 1,600,000 Btuh INPUT

- Choice of Gravity or Power Vent
- Choice of Aluminized or Stainless Steel Heat Exchangers
- Weatherproof Cabinets
- Powerful Blowers
- Completely Assembled
- All Controls Furnished
- Power Supply Choice
- Many Options Available
- Installation Flexibility
- Complete Service Access



Gravity Vent Model



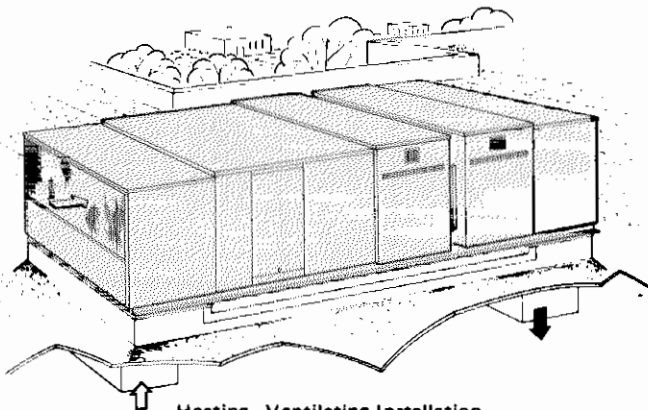
Power Vent Model

Versatile Gas Fired Rooftop Equipment For Heating, Ventilating or Make-up Air Applications

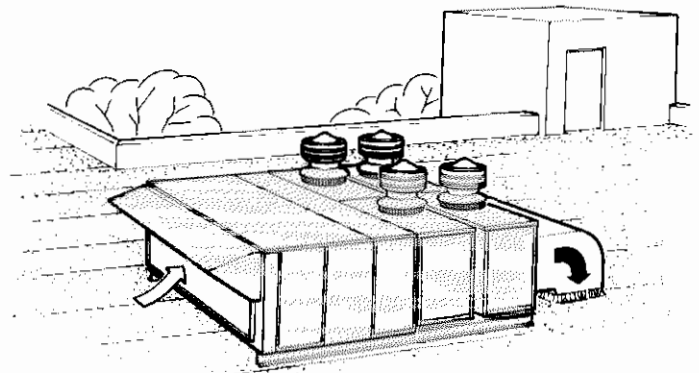
The Lennox LHF, LHV and LMU line of rooftop equipment has an installation and application flexibility unmatched by any other weatherproof rooftop units. The LHF series are primarily adaptable to straight space heating applications with control by a single thermostat. Standard equipment includes; duct furnace(s), insulated blower section with drive, motor and starter, thermostat, fan delay relay and fan selector switch. The LMU series are used in make-up air applications using 100% outdoor air. Standard equipment includes; duct furnace(s), uninsulated (insulation optional) blower section with drive, motor and starter, modulating gas valve and remote control station. LHV models are used in heating and ventilating applications requiring both outdoor and recirculated air. Standard equipment consists of: duct furnace(s), insulated

blower section with drive, motor and starter, thermostat, modulating gas valve and by-pass manifold and remote control station. All models are equipped with a special base frame for ease of handling and installation. Duct furnace(s) are natural gas fired with spark ignition pilot and 24 volt control circuit. Available with gravity vent cap or power venter and either a aluminized steel, type 409 (E3) stainless or 321 stainless heat exchanger. See Heating Units—Gas page 79 for duct furnace data. A complete line of options and accessory equipment is available and must be specified when ordering. See options and accessory selection table. Units are shipped assembled ready to install. Larger models are shipped in separate assembled sections for ease in handling and shipping. Separate sections and accessory items are designed for easy field installation.

Typical Applications



Heating—Ventilating Installation



Make-Up Air Installation

NOTE—Specifications, Ratings and Dimensions subject to change without notice.

HOW TO SELECT

LHF HEATING SYSTEM

1. Calculate Btuh heat loss of space and select desired CFM air delivery or temperature rise (usually 70°F.).
2. Select motor with "Max. ESP" rating sufficient to deliver desired CFM against resistance of filters, dampers, intake screen, and duct system.
3. Specify model number for gravity or power vent, CFM and ESP, motor HP, voltage and phase, heat exchanger material, and desired options.

Optional Selectra MS-2 Electronic Control—Permits continuous blower operation with precise modulation of gas input. Room thermostat reacts to temperature changes as small as 1/10°F.

Includes series 9 amplifier, modulator/regulator valve, and remote mounted room thermostat.

Modulator/regulator valve replaces pressure regulator.

LMU MAKE-UP AIR SYSTEM

1. Calculate or estimate total CFM of air exhausted.
2. Determine temperature rise through heater (usually 70° minus outside winter design temperature), and select unit capable of this temperature rise and required CFM air delivery.
3. Select motor with "Max. ESP" rating sufficient to deliver required CFM against resistance of filters, dampers, intake screen, and duct system.
4. Specify model number for gravity or power vent, CFM and ESP, motor HP, voltage and phase, heat exchanger material, and desired options.

Optional Selectra MS-1 Electronic Control—Provides close control of leaving air temperature. Electronic sensing device reacts to temperature changes as small as 1/10°F. Wall mounted selector dial permits temperature adjustment from convenient location. Includes series 10 amplifier, modulator/regulator valve, duct temperature sensor and temperature selector dial. Modulator/regulator valve replaces both pressure regulator and non electric modulating gas valve.

LHV HEATING & VENTILATING SYSTEM

1. Calculate total CFM of fresh air required to satisfy exhaust fans and ventilation code requirement ... = _____ CFM
2. Subtract outside winter design temperature from inside design temperature = _____ °TD
3. Find Btuh input needed to heat outside air to room temperature by multiplying:
_____ CFM x _____ °TD x 1.08 x 1.33 = _____ Btuh
4. Determine space heat loss and multiply by 1.33 ... = _____ Btuh
5. Add items 3 and 4 for total input = _____ Btuh
6. Select unit for desired Btuh and motor with "Max. ESP" rating sufficient to deliver desired CFM against resistance of filters, dampers, intake screen, and duct system.

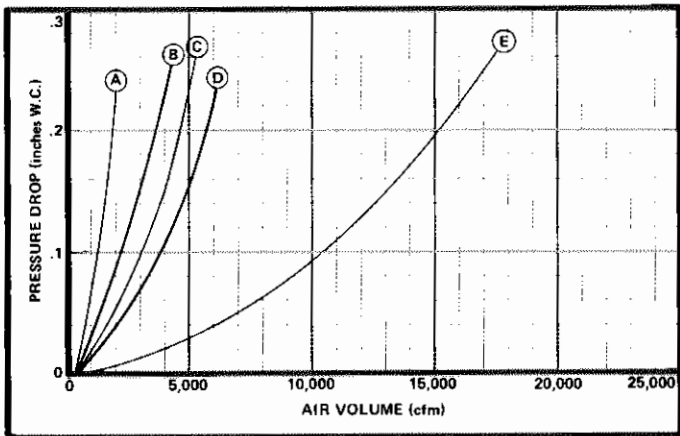
7. Specify LHVB unit only if:
 - a) Btuh input exceeds 800,000; or
 - b) Lowest CFM air delivery of LHVA model is more than needed.
8. Specify model number for gravity vent, CFM and ESP, motor HP, voltage and phase, heat exchanger material, and desired options.

Optional Selectra MS-3 Electronic Control—Provides close electronic control of leaving air temperature with over-riding full input for space heating. Leaving air sensing device reacts to temperature changes as small as 1/10°F. Wall mounted selector dial permits leaving air temperature adjustment from convenient location. Includes series 10 amplifier, modulator/regulator valve, duct temperature sensor, selector dial and over-riding room thermostat. Modulator/regulator valve replaces pressure regulator. Non electric modulating valve and by-pass valve are omitted.

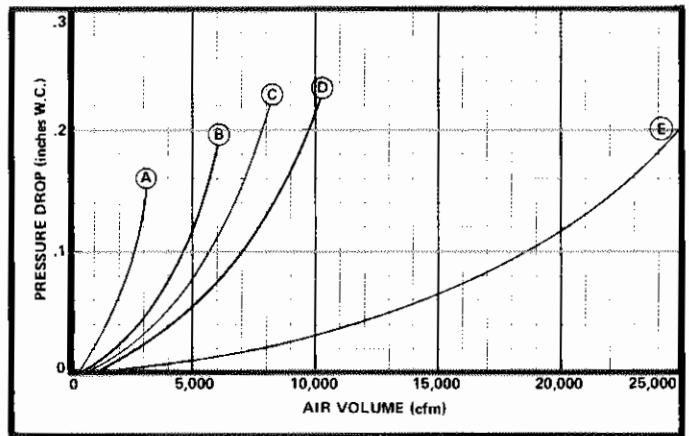
ACCESSORY EQUIPMENT AIR RESISTANCE

(Allow .10 inches w.c. for Inlet and Discharge Plenum)

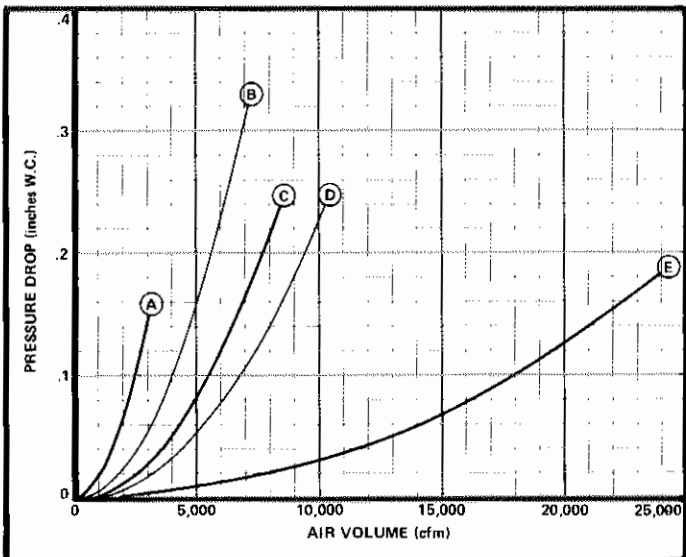
THROWAWAY FILTERS



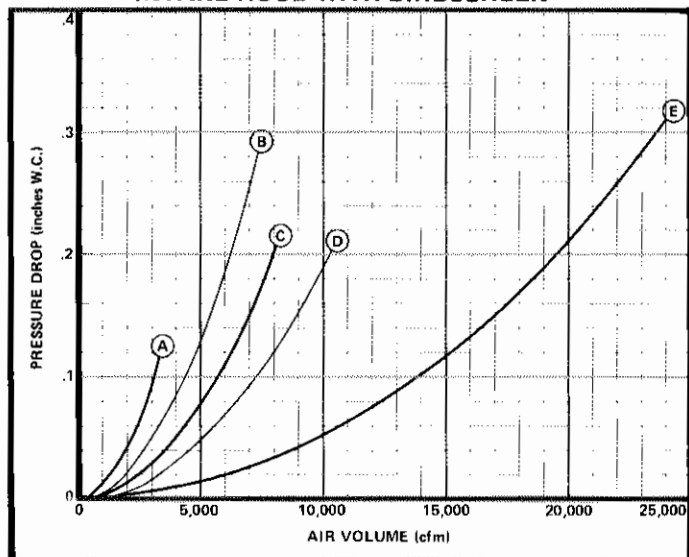
CLEANABLE FILTERS



FRESH AIR SHUT-OFF OR MIXING DAMPERS



INTAKE HOOD WITH BIRDSCREEN



Identify Model Number from Blower Used column on System Selector

- | | | | | |
|---|---|---|--|--|
| (A) MB-112
Filters Used
(1) 16 x 15 x 2
(1) 20 x 25 x 2 | (B) MB-114A
Filters Used
(4) 20 x 20 x 2 | (C) MB-114B
Filters Used
(4) 20 x 25 x 2 | (D) MB-214
Filters Used
(8) 16 x 20 x 2 | (E) MB-215 or MB-218
Filters Used
(10) 16 x 25 x 2
(5) 20 x 25 x 2 |
|---|---|---|--|--|

SYSTEM SELECTOR

LHFA, LMUA And LHVA SERIES UNITS

**Model Number	Duct Furnace(s) Gravity Vent/ Power Vent	Input (Btuh)	Output (Btuh)	Shipping Weight (lbs.) Gravity Vent/ Power Vent	Blower Used	Air Temperature Rise																	
						40°			50°			60°			70°			80°			90°		
						Air Vol. (cfm)	Motor hp	Max. E.S.P. (in. w.c.)	Air Vol. (cfm)	Motor hp	Max. E.S.P. (in. w.c.)	Air Vol. (cfm)	Motor hp	Max. E.S.P. (in. w.c.)	Air Vol. (cfm)	Motor hp	Max. E.S.P. (in. w.c.)	Air Vol. (cfm)	Motor hp	Max. E.S.P. (in. w.c.)	Air Vol. (cfm)	Motor hp	Max. E.S.P. (in. w.c.)
LHFA-100	(1) LRDG-100/ (1) LRDV-100	100,000	75,000	520/ 540	MB-112	1740	1/4	.73	1395	1160	.77	1/4	.88	995	870	.95	1/4	1.03	775				
LMUA-100							1/3	.97			1.02	1/3	1.10			1.23	1/3	1.32					
LHVA-100							1/2	.57	1745	1450	.63	1/4	.75	1245	1090	.85	1/4	.93	970				
LHFA-125	(1) LRDG-125/ (1) LRDV-125	125,000	93,750	545/ 575	MB-112	2175	1/2	.75			.85	1/3	.98			1.11	1/3	1.19					
LMUA-125							1/3	.41			.49	1/3	.62			.54	1/4	.58					
LHVA-125							1/2	.73	2230	1860	.83	1/2	.91	1590	1390	.75	1/3	.76	1240				
LHFA-160	(1) LRDG-160/ (1) LRDV-160	160,000	120,000	590/ 615	MB-114A	2785	3/4	.45			.55	1/2	.43			.43	1/3	.49					
LMUA-160							1/2	.79	2930	2435	.92	3/4	.73	2090	1825	.60	1/3	.67	1630				
LHVA-160							1-1/2	.88			.77	1/2	.91			.69	1/2	.78					
LHFA-210	(1) LRDG-210/ (1) LRDV-210	210,000	157,500	715/ 740	MB-114A	3655	1	.41			.39	1/2	.56			.42	1/3	.51					
LMUA-210							1-1/2	.81	3485	2900	.77	3/4	.91	2490	2175	.69	1/2	.78	1935				
LHVA-210							1-1/2	.48			.46	1/2	.39			.57	1/2	.40					
LHFA-250	(1) LRDG-250/ (1) LRDV-250	250,000	187,500	775/ 800	MB-114B	4350	1	.59			.38	1/2	.56			.42	1/3	.51					
LMUA-250							1-1/2	.81	4180	3480	.78	1	.71	2985	2610	.87	3/4	.65	2320				
LHVA-250							3	1.66			.78	1-1/2	.71			.87	3/4	.65	1/2				
LHFA-300	(1) LRDG-300/ (1) LRDV-300	300,000	225,000	815/ 840	MB-114B	5215	2	.48			.49	1	.46			.37	1/2	.46					
LMUA-300							3	1.15	5570	4640	.83	1-1/2	.68	3975	3475	.60	3/4	.71	3090				
LHVA-300							3	1.66			.83	1-1/2	.68			.60	3/4	.71	3/4				
LHFA-400	(1) LRDG-400/ (1) LRDV-400	400,000	300,000	1030/ 1055	MB-214	6950	2	.34			.38	1	.27			.35	1	.35					
LMUA-400							3	.67			.52	2	.46	4970	4340	.57	1-1/2	.45	3860				
LHVA-400							3	1.15			.52	2	.46			.57	1-1/2	.45	1				
LHFA-500	(2) LRDG-250/ (2) LRDV-250	500,000	375,000	1545/ 1595	MB-215	*8700	2	.59	*6950	5600	.38	1-1/2	.27			.35	1	.35	3/4				
LMUA-500							3	.91			.52	2	.46			.57	1-1/2	.45	1				
LHVA-500							3	1.15			.52	2	.46			.57	1-1/2	.45	1				
LHFA-600	(2) LRDG-300/ (2) LRDV-300	600,000	450,000	1630/ 1680	MB-215	*10410	2	.54	*8340	*6950	.48	1-1/2	.33	5950	5210	.29	1	.33	1				
LMUA-600							3	.78			.69	2	.52			.52	1-1/2	.55	1-1/2				
LHVA-600							3	1.15			.69	2	.52			.52	1-1/2	.55	1-1/2				
LHFA-800	(2) LRDG-400/ (2) LRDV-400	800,000	600,000	2125/ 2175	MB-218	13,900	5	.75	11,100	9260	.42	2	.45	7940	6950	.42	1	.34	3/4				
LMUA-800							5	1.45			.78	3	.65			.55	1-1/2	.48	1				
LHVA-800							5	1.45			.78	3	.65			.55	1-1/2	.48	1				

*MB-218 Substituted for MB-215
 **Add suffix "-G" for gravity vent models or "-V" for power vent models.
 NOTE—All units with 40° and 50° air temperature rise have High cfm type "H" duct furnaces.

SYSTEM SELECTOR

LHVB-200 Thru 800 AND LHFB, LMUB-500 Thru 800 UNITS

*Model Number	Duct Furnaces Gravity Vent/ Power Vent	Input (Btu/h)	Output (Btu/h)	Shipping Weight (lbs.) Gravity Vent/ Power Vent	Blower Used	Air Temperature Rise																	
						70°			80°			90°			1000			110°			120°		
						Air Vol. (cfm)	Max. E.S.P. (in. w.c.)	Motor hp	Air Vol. (cfm)	Max. E.S.P. (in. w.c.)	Motor hp	Air Vol. (cfm)	Max. E.S.P. (in. w.c.)	Motor hp	Air Vol. (cfm)	Max. E.S.P. (in. w.c.)	Motor hp	Air Vol. (cfm)	Max. E.S.P. (in. w.c.)	Motor hp	Air Vol. (cfm)	Max. E.S.P. (in. w.c.)	Motor hp
LHVB-200	(2) LRDG-100/ (2) LRDV-100	200,000	150,000	820/ 860	MB-112	1990	.47	1/3	1740	.48	1/4	1545	.60	1/4	1395	.71	1/4	1275	.76	1/4	1160	.85	1/4
LHVB-250	(2) LRDG-125/ (2) LRDV-125	250,000	187,500	870/ 930	MB-112	2485	.52	1/2	2170	.37	1/3	1930	.59	1/3	1740	.54	1/4	1595	.61	1/4	1450	.71	1/4
LHVB-320	(2) LRDG-160/ (2) LRDV-160	320,000	240,000	940/ 990	MB-114A	3185	.50	3/4	2785	.41	1/2	2475	.57	1/2	2230	.41	1/3	2045	.50	1/3	1860	.61	1/3
LHVB-420	(2) LRDG-210/ (2) LRDV-210	420,000	315,000	1115/ 1165	MB-114A	4180	.69	1-1/2	3655	.55	1	3250	.53	3/4	2925	.36	1/2	2680	.51	1/2	2435	.63	1/2
LHVB-500	(2) LRDG-250/ (2) LRDV-250	500,000	375,000	1225/ 1275	MB-114B	4980	.90	2	4350	1.36	2	3870	1.16	1-1/2	3485	.55	3/4	3185	.36	1/2	2900	.48	1/2
LHVB-600	(2) LRDG-300/ (2) LRDV-300	600,000	450,000	1305/ 1355	MB-114B	5970	1.06	3	5220	.85	2	4640	1.14	2	4180	.42	1	3830	.66	1	3480	.57	3/4
LHVB-800	(2) LRDG-400/ (2) LRDV-400	800,000	600,000	1705/ 1755	MB-214	7950	.61	3	6950	.43	2	6180	.41	1-1/2	5570	.65	1-1/2	5105	.42	1	4640	.55	1

*Add suffix "-G" for gravity vent models or "-V" for power vent models.

LHFB, LMUB AND LHVB-1000 Thru 1600 UNITS

*Model Number	Duct Furnaces Gravity Vent/ Power Vent	Input (Btu/h)	Output (Btu/h)	Shipping Weight (lbs.) Gravity Vent/ Power Vent	Blower Used	Air Temperature Rise																										
						40°			50°			60°			70°			80°			90°			100°			110°			120°		
						Air Vol. (cfm)	Max. E.S.P. (in. w.c.)	Motor hp	Air Vol. (cfm)	Max. E.S.P. (in. w.c.)	Motor hp	Air Vol. (cfm)	Max. E.S.P. (in. w.c.)	Motor hp	Air Vol. (cfm)	Max. E.S.P. (in. w.c.)	Motor hp	Air Vol. (cfm)	Max. E.S.P. (in. w.c.)	Motor hp	Air Vol. (cfm)	Max. E.S.P. (in. w.c.)	Motor hp	Air Vol. (cfm)	Max. E.S.P. (in. w.c.)	Motor hp	Air Vol. (cfm)	Max. E.S.P. (in. w.c.)	Motor hp	Air Vol. (cfm)	Max. E.S.P. (in. w.c.)	Motor hp
LHFB-1000	(4) LRDG-250/ (4) LRDV-250	1,000,000	750,000	2270/ 2345	MB-218	17,400	.62	7-1/2	13,900	1.30	7-1/2	11,600	.58	3	9930	.40	2	8700	.42	1-1/2	7720	.28	1	6950	.30	3/4	6320	.34	3/4	5790	.42	1-1/2
LHVB-1200	(4) LRDG-300/ (4) LRDV-300	1,200,000	900,000	2930/ 3005	MB-218	20,850	.38	10	16,700	1.24	15	13,900	.58	5	11,900	.48	3	10,420	.37	2	9280	.30	1-1/2	8350	.30	1	7590	.29	3/4	6950	.32	3/4
LHVB-1600	(4) LRDG-400/ (4) LRDV-400	1,600,000	1,200,000	4365/ 4465	MB-218	27,800	.25	20	22,250	1.88	20	18,530	.47	7-1/2	15,880	.46	5	13,900	.22	3	12,350	.45	3	11,100	.36	2	10,100	.33	1-1/2	9260	.36	1-1/2

*Add suffix "-G" for gravity vent models or "-V" for power vent models.
NOTE—All Units with 40° and 50° air temperature rise have high CfM type "H" duct furnace.
†MB-215 substituted for MB-218.

OPTIONS & ACCESSORIES SELECTION AND WEIGHTS

Model Number	WEIGHT (lbs.)																		
	LHFA		LMUA			LHVA			LHFB			LMUB			LHVB				
	100 thru 210	250 thru 400	500 thru 800	100 thru 210	250 thru 400	500 thru 800	100 thru 210	250 thru 400	500 thru 800	500 thru 800	1000 thru 1200	1600	500 thru 800	1000 thru 1200	1600	200 thru 250	320 thru 420	500 thru 800	
Filters	20	25	30	20	25	30	20	25	30	25	30	30	25	30	30	20	20	25	30
Throw-away 2" Cleanable 2"	25	30	35	25	30	35	25	30	35	30	35	35	30	35	25	25	25	30	35
Fresh air intake hood with birdscreen	75	85	165	75	85	165	75	85	165	100	165	165	100	165	75	85	100	165	165
Fresh air shut-off damper with 2 position motor, linkage and end switch	—	—	—	24	38	106	—	—	—	—	—	—	—	—	24	24	38	106	106
Mixing Dampers (Return & fresh air & linkage)	48	76	212	—	—	—	48	76	212	76	212	212	—	—	48	58	76	212	212
Modulating motor or 2 position motor with end switch.	20	20	20	—	—	—	20	20	20	20	20	20	—	—	20	20	20	20	20
T991 temperature controller	10	10	10	—	—	—	10	10	10	10	10	10	—	—	10	10	10	10	10
Blower cabinet insulation (for LMUA & LMUB models)	—	—	—	15	15	15	—	—	—	—	—	—	15	15	15	—	—	—	—
Selectra MS-1 electronic make-up air package with remote temperature selector dial in place of V5155A modulating gas valve.	—	—	—	15	15	30	—	—	—	—	—	—	30	35	35	—	—	—	—
Selectra MS-2 electronic modulation space heating package added to basic system. Modulating room thermostat replaces on-off thermostat.	15	15	20	—	—	—	—	—	—	20	35	40	—	—	—	—	—	—	—
Selectra MS-3 electronic package in place of V5155A modulating valve and by-pass valve manifold. Make-up air portion same as MS-1; space heat is two position.	—	—	—	—	—	—	15	15	25	—	—	—	—	—	15	20	25	30	40
Vibration isolators (rubber-in-shear)	15	15	15	15	15	15	15	15	15	15	20	20	15	20	15	15	15	15	20
Fused disconnect switch (choice) (115/230v-1ph) — (208/230v-3ph) — (460/550v-3ph)	15	15	15	15	15	15	15	15	15	15	15	20	15	15	15	15	15	15	20
Step down transformer — for voltage above 230	5	5	10	5	5	10	5	5	10	10	15	15	10	15	10	10	10	10	15
Plenums For Vertical Air Flow	170	200	—	—	—	—	170	200	—	200	—	—	—	—	170	170	200	—	—
For 100% fresh air (outlet plenum only)	—	—	—	85	100	—	—	—	—	—	—	—	100	—	—	—	—	—	—
For 100% return air (inlet and outlet plenums)	235	300	—	—	—	—	235	300	—	300	—	—	—	—	235	235	300	—	—
For mixed fresh and return air (inlet and outlet plenums)	—	—	—	100	125	—	—	—	—	—	—	—	135	—	—	—	—	—	—
Roof curb— for units with plenums. (recommended) (2 duct curbs)	125	150	—	—	—	—	125	150	—	185	—	—	—	—	125	150	185	—	—
High gas pressure regulators	10	10	10	10	10	10	10	10	10	10	20	20	10	10	10	10	10	10	20
Two stage gas valve(s)	15	15	30	—	—	—	—	—	—	30	60	60	—	—	—	—	—	—	—

SHIPPING INFORMATION

RAIL—Base unit factory assembled except for gravity vent caps and remote mounted controls. Optional roof curb or LHFA, LMUA, LHVA-500, 600, 800 and LHFB, LMUB, LHVB-1000, 1200, 1600 intake hood with birdscreen shipped in separate crate.

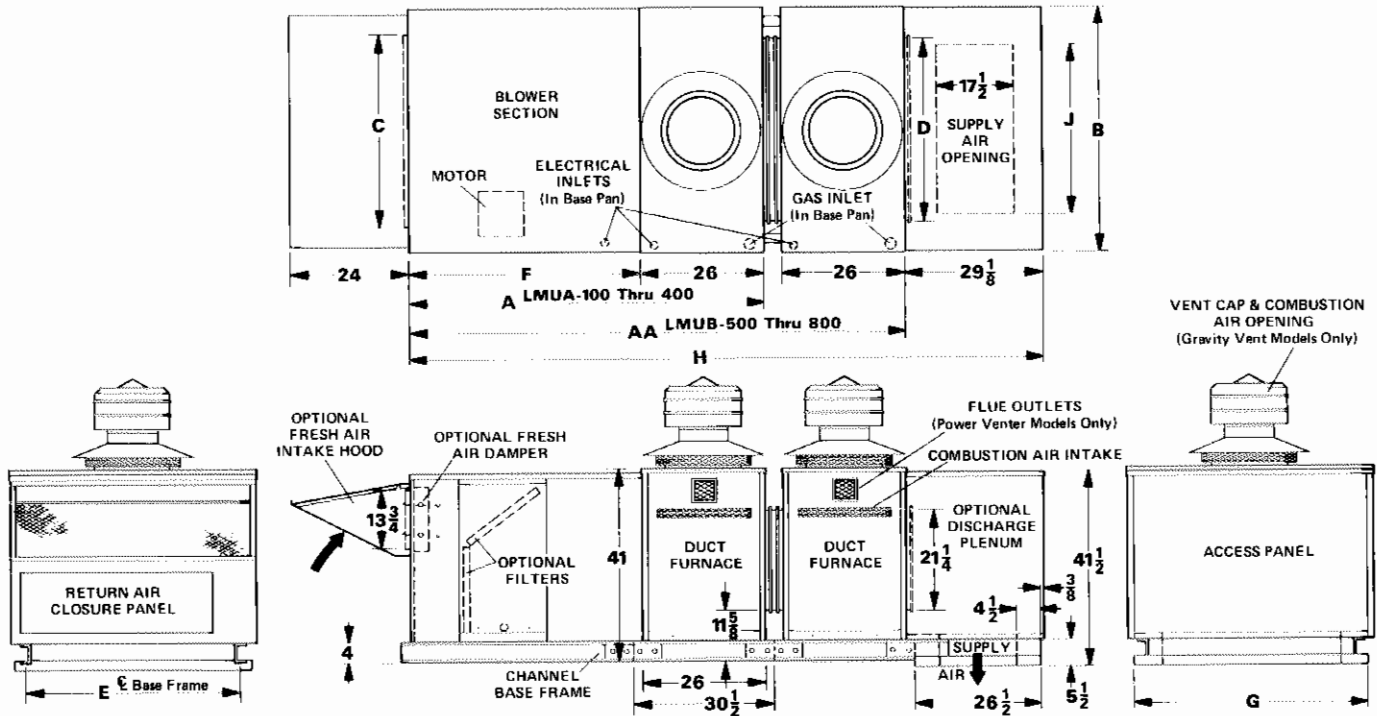
TRUCK—Same as rail except downstream duct furnaces of all 1000, 1200, 1600 models shipped in separate crate.

MOTOR AND STARTER SELECTION AND WEIGHT

Motor		1/4	1/3	1/2	3/4	1	1-1/2	2	3	5	7-1/2	10	15
Weight (lbs.)		25	30	35	40	65	75	80	100	115	215	260	325
Single Speed	1 ph	X	X	X	X	X	X	X	X	X	---	---	---
	3 ph	X	X	X	X	X	X	X	X	X	X	X	X
Two Speed 1800/900 rpm	3 ph	X	X	X	X	X	X	X	X	X	X	X	X
Two Speed 1800/1200 rpm	1 ph	X	X	X	X	X	X	X	X	---	---	---	---
	3 ph	X	X	X	X	X	X	X	X	X	X	X	X

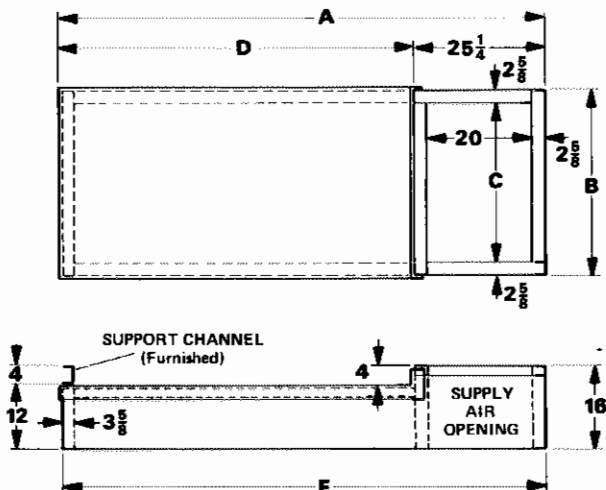
DIMENSIONS (inches)

LMUA-100 Thru 400 AND LMUB-500 Thru 800



Model Number	LMUA				LMUB	
	100 & 125	160 & 210	250 & 300	400	500 & 600	800
AA	---	---	---	---	105-7/8	108-7/8
A	68-1/2	75-1/2	75-1/2	78-1/2	---	---
B	28-5/8	39-3/8	50-1/8	63-1/2	50	63-1/2
C	19-1/2	30-1/4	41	47-3/8	41	47-3/8
D	17-7/8	28-5/8	39-3/8	52-3/4	39-3/8	52-3/4
E	21-7/8	32-5/8	43-3/8	56-7/8	43-3/8	56-7/8
F	42-1/2	49-1/2	49-1/2	52-1/2	49-1/2	52-1/2
G	26-1/4	37	47-3/4	61-1/8	47-3/4	61-1/8
H	97-5/8	104-5/8	104-5/8	107-5/8	135-1/4	138-1/4
J	17-3/16	27-15/16	38-11/16	52-3/16	38-11/16	52-3/16

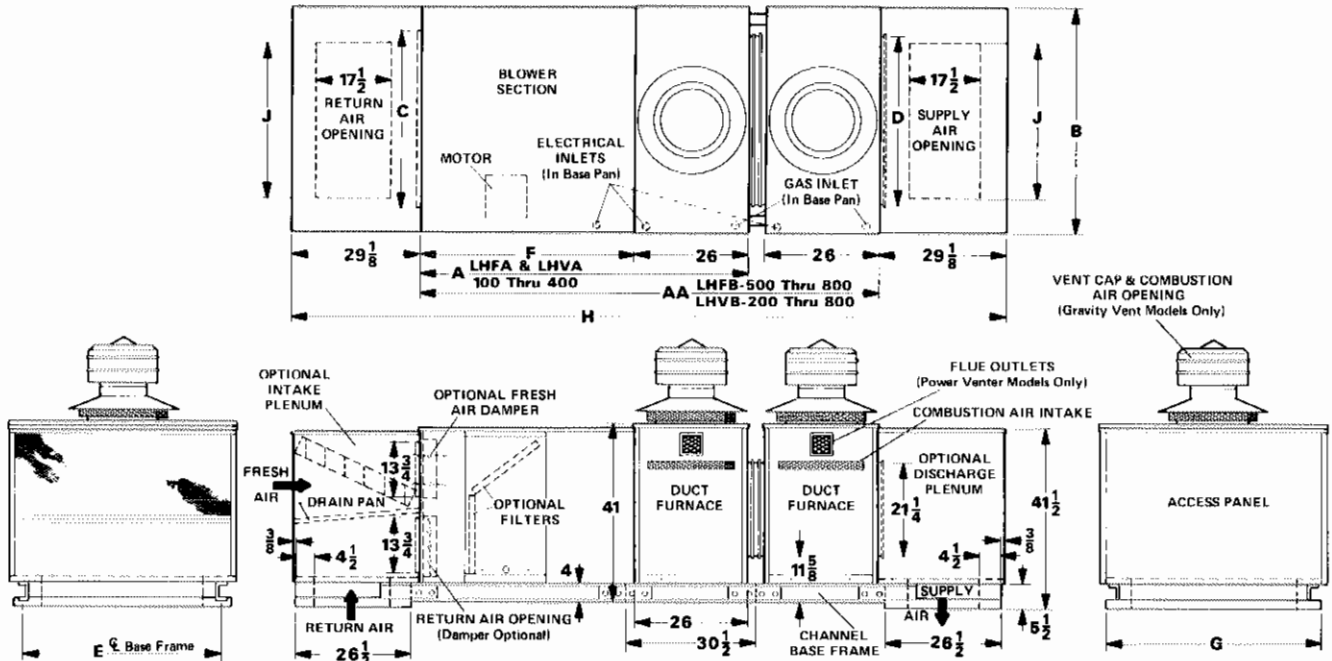
ROOF MOUNTING CURB FOR VERTICAL DISCHARGE ONLY



Model Number	A	B	C	D	E
LMUA-100	89-1/2	24-15/16	19-11/16	64-1/4	88-3/4
LMUA-125	93-1/2	35-11/16	30-7/16	68-1/4	92-3/4
LMUA-160	93-1/2	46-7/16	41-3/16	68-1/4	92-3/4
LMUA-250	96-1/2	59-7/8	54-5/8	71-1/4	95-3/4
LMUA-300	124	46-7/16	41-3/16	98-3/4	122-1/8
LMUB-500	127	59-7/8	54-5/8	101-3/4	125-1/8

DIMENSIONS (inches)

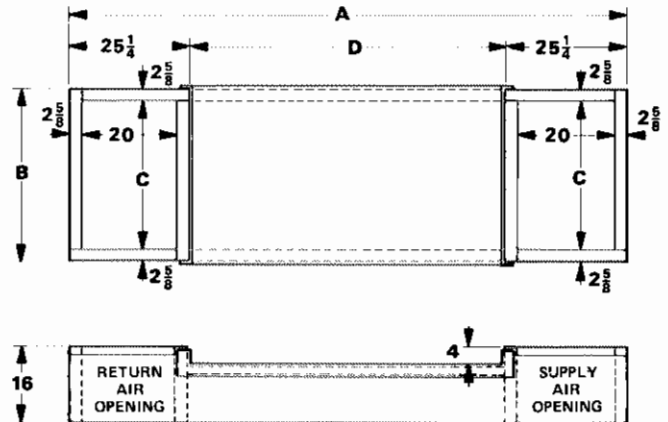
LHFA & LHVA-100 Thru 400, LHVB-200 Thru 800 AND LHFB-500 Thru 800



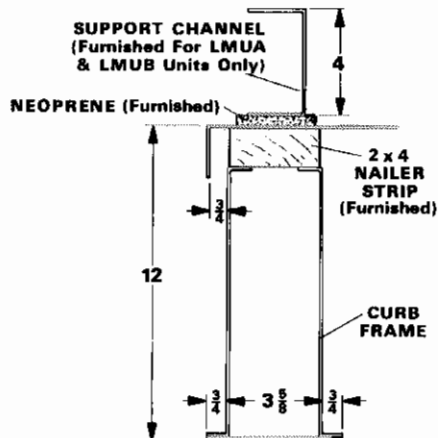
Model Number	LHFA & LHVA				LHVB		LHFB & LHVB	
	100 & 125	160 & 210	250 & 300	400	200 & 250	320 & 420	500 & 600	800
AA	---	---	---	---	98-7/8	105-7/8	105-7/8	108-7/8
A	68-1/2	75-1/2	75-1/2	78-1/2	---	---	---	---
B	28-5/8	39-3/8	50-1/8	63-1/2	28-5/8	39-3/8	50-1/8	63-1/2
C	19-1/2	30-1/4	41	47-3/8	19-1/2	30-1/4	41	47-3/8
D	17-7/8	28-5/8	39-3/8	52-3/4	17-7/8	28-5/8	39-3/8	52-3/4
E	21-7/8	32-5/8	43-3/8	56-7/8	21-7/8	32-5/8	43-3/8	56-7/8
F	42-1/2	49-1/2	49-1/2	52-1/2	42-1/2	49-1/2	49-1/2	52-1/2
G	26-1/4	37	47-3/4	61-1/8	26-1/4	37	47-3/4	61-1/8
H	126-3/4	133-3/4	133-3/4	136-3/4	157-3/8	164-3/8	164-3/8	167-3/8
J	17-3/16	27-15/16	38-11/16	52-3/16	17-3/16	27-15/16	38-11/16	52-3/16

ROOF MOUNTING CURB FOR VERTICAL INTAKE AND DISCHARGE

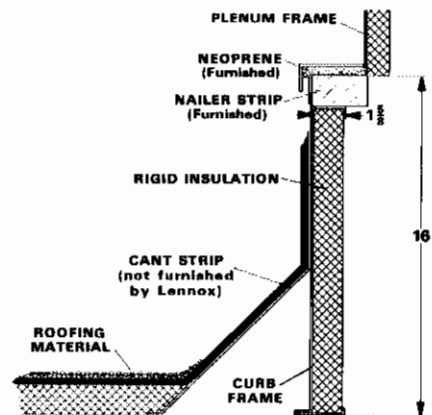
Model Number	A	B	C	D
LHFA-100, LHVA-100	124-3/4	24-15/16	19-11/16	74-1/4
LHFA-125, LHVA-125	131-3/4	35-11/16	30-7/16	81-1/4
LHFA-160, LHVA-160	131-3/4	46-7/16	41-3/16	81-1/4
LHFA-210, LHVA-210	134-3/4	59-7/8	54-5/8	84-1/4
LHFA-250, LHVA-250	155-1/4	24-15/16	19-11/16	104-3/4
LHFA-300, LHVA-300	162-1/4	35-11/16	30-7/16	111-3/4
LHFA-400, LHVA-400	162-1/4	46-7/16	41-3/16	111-3/4
LHFB-500, LHVB-500	165-1/4	59-7/8	54-5/8	114-3/4
LHFB-600, LHVB-600				
LHFB-800, LHVB-800				



REAR SUPPORT CURBING DETAIL

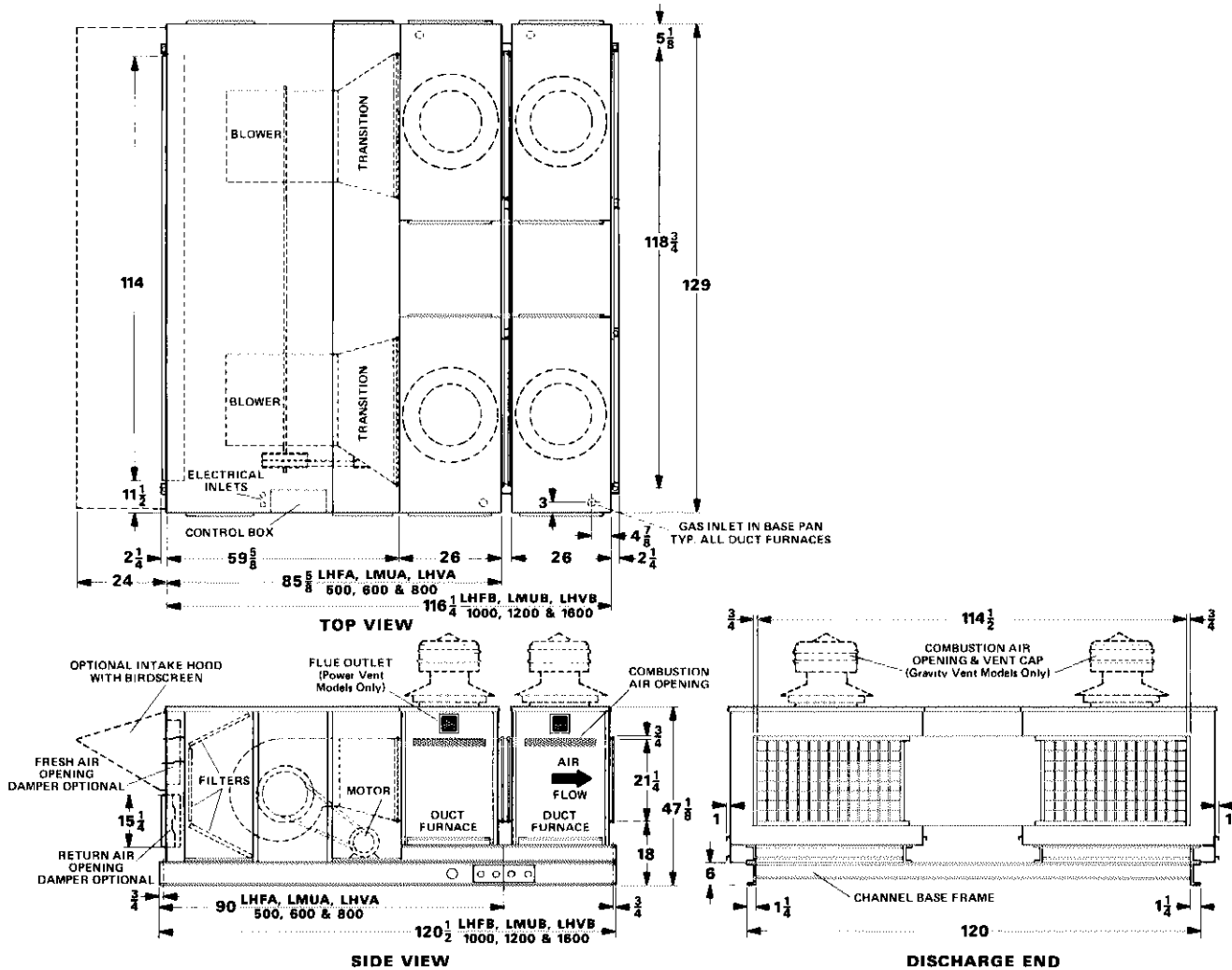


PLENUM CURBING DETAIL



DIMENSIONS (inches)

LHFA, LMUA And LHVA-500, 600 & 800
LHFB, LMUB And LHVB-1000, 1200 & 1600



GUIDE SPECIFICATIONS

General:

Furnish and install the following Lennox Natural Gas Fired Equipment:

Item No.	Model No.	Btuh Input	CFM	Ext. S.P.	Motor HP	Motor Volts and Phase
----------	-----------	------------	-----	-----------	----------	-----------------------

Each unit shall be set on roof according to plans and connected to duct system.

Equipment shall be factory assembled to the extent of shipping limitations and consist of the following:

Blower Section, including one or more forward curved, double-width, double-inlet squirrel cage blowers, with self aligning, permanently lubricated ball bearings, to insure quiet and efficient operation, motor, and appropriate drive parts for the specified air delivery and external static pressure. Blower section shall have aluminized steel casing with baked-on enamel finish. Rotors shall be statically and dynamically balanced.

Heating Section, including one or more A.G.A. design certified duct furnaces with .041" minimum electrically welded heavy duty heat exchanger, individually removable aluminized steel burners with stainless steel ribbons and cross-lighters, pilot assembly, slide-out burner tray and balanced flue design (gravity) (power) venting system for operation with Natural Gas at inlet pressure of 4" to 7" W.C. Each duct furnace shall have aluminized steel casing with baked-on enamel finish and be equipped with main gas cock, main gas pressure regulator, pilot gas cock, main solenoid gas valve, electric spark ignition pilot relight system, safety pilot, high limit, and 24 volt control transformer. Power vent models shall include pilot solenoid gas valve.

Add one of the following:

LHF unit shall include insulated blower section and be equipped with (aluminized) (409 stainless) (321 stainless) steel heat exchanger.

Control system shall include fan delay relay, room thermostat (delete if option MS-2 selectra specified) and manual fan "on-auto" selector switch.

LMU unit shall be equipped with (aluminized steel) (409 stainless steel) (321 stainless steel) heat exchanger. Control system shall include non electric modulating gas valve (delete if optional MS-1 Selectra specified) and remote control station with operating switches and signal lights.

LHV unit shall include insulated blower section and be equipped with (aluminized steel) (409 stainless steel) (321 stainless steel) heat exchanger. LHVB models shall have aluminized steel downstream bank furnace(s). Control system shall include non electric modulating gas valve and by-pass manifold (delete if optional MS-3 Selectra specified) and remote control station with operating switches and signal lights.

The following optional accessories shall also be furnished:

Item	LHF	LMU	LHV
Insulation of blower section	Std.	X	Std.
Filter section with throw-away or cleanable filters	X	X	X
Fresh air intake hood with birdscreen	X	X	X
Fresh air damper w/motor, linkage & end switch	NA	X	X
Mixing dampers w/motor & temperature controller	X	NA	X
Vibration isolators (rubber-in-shear)	X	X	X
Fused disconnect switch	X	X	X
Selectra MS-1 electronic control	NA	X	NA
Selectra MS-2 electronic control	X	NA	NA
Selectra MS-3 electronic control	NA	NA	X
Step down transformer—for voltage above 230	X	X	X
Two speed motor—1800/1200 or 1800/900 RPM	X	X	X
High gas pressure regulator	X	X	X
Two stage gas valve(s)	X	NA	NA
Roof curbs and plenums	X	X	X

X Indicates availability.