



**SUBMITTAL DATA**

**SPECIFICATIONS**

Model No.		LGB120 (HEAT ONLY)	
Indoor Blower and Drive Selection	Blower wheel nominal dia. x width — in. (mm)	(1) 15 x 15 (381 x 381)	
	Factory Installed ① Drives	Nominal motor hp (kW)	3 (2.2)
		Maximum usable hp (kW)	3.45 (2.6)
		Voltage & phase - 60 hz	208/230v/460v/575v-3ph
	RPM range	735 - 920	
② Indoor Coil	Net face area — sq. ft. (m <sup>2</sup> )	10.7 (0.99)	
	Tube diameter — in. (mm) & No. of rows	3/8 (9.5) — 4	
	Fins per inch (m)	12 (472)	
Heating Capacity Natural Gas or LPG/Propane (at Sea Level)	Input (High) - Btuh (kW)	235,000 (68.9)	
	Output (High) - Btuh (kW)	188,000 (55.1)	
	Input (Low) - Btuh (kW)	152,500 (44.7)	
	Output (low) - Btuh (kW)	122,000 (35.8)	
	A.G.A./C.G.A. Thermal Efficiency	80.0%	
Gas Supply Connections fpt — in. (mm)	Natural	3/4 (19)	
	LPG/Propane	3/4 (19)	
Recommended Gas Supply Pressure — wc. in. (kPa)	Natural	7 (1.7)	
	LPG/Propane	11 (2.7)	
Filters (furnished)	Type of filter	Farr 30-30 or equivalent	
	No. & size — in. (mm)	(4) 16 x 25 x 2 (406 x 635 x 51)	
Net weight of basic unit with accessories — lbs. (kg)		1114 (505)	
Shipping weight of basic unit with accessories — lbs. (kg) (1 Package)		1212 (550)	
Electrical characteristics - 60 hz		208/230v/460v/575v-3ph	

① Using total air volume and system static pressure requirements determine from blower performance tables rpm and motor output required. Maximum usable output of motors furnished by Lennox are shown. In Canada, nominal motor output is also maximum usable motor output. If motors of comparable output are used, be sure to keep within the service factor limitations outlined on the motor nameplate.

② Indoor coil furnished for unit structural integrity only.

**STANDARD FEATURES**

Electro-mechanical Thermostat Controls
Circuit Breaker
Smoke Detector (return air)
GFCI service outlets (115v). Field wiring required

**FIELD INSTALLED ACCESSORIES**

LPG/Propane Conversion Kit (19K52)
Roof Mounting Frame - LBRMF12S-14 (68L98)

**ELECTRICAL DATA**

Model No.		LGB120 (HEAT ONLY)			
Line voltage data — 60 Hz — 3 phase		208/230v	460v	575v	
Indoor Blower Motor	Motor Output	H.P.	3	3	
		kW	2.2	2.2	
	Full load amps		10.6	4.8	3.9
	Locked rotor amps		58.0	26.8	16.2
Recommended maximum fuse or HACR circuit breaker size (amps)		20	15		
Service Outlets 115 volt GFCI (amp rating)		15			
*Minimum Circuit Ampacity		14	6	5	

\*Refer to National or Canadian Electrical Code manual to determine wire, fuse and disconnect size requirements.

NOTE — Extremes of operating range are plus and minus 10 % of line voltage.

# BLOWER DATA

## LGB120 (HEAT ONLY) BLOWER PERFORMANCE

Air Volume cfm (L/s)	RPM & Motor Output	TOTAL STATIC PRESSURE EXTERNAL TO UNIT — inches water gauge (Pa)									
		0.1 (25)	0.2 (50)	0.3 (75)	0.4 (100)	0.5 (125)	0.6 (150)	0.7 (175)	0.8 (200)	0.9 (225)	1.0 (250)
3000 (1415)	RPM	510	555	600	650	695	740	790	840	885	935
	BHP	0.60	0.70	0.80	0.95	1.05	1.20	1.40	1.60	1.80	2.05
	kW	0.5	0.5	0.6	0.7	0.8	0.9	1.0	1.2	1.3	1.5
3500 (1650)	RPM	585	625	660	700	740	780	820	860	900	940
	BHP	0.95	1.05	1.15	1.30	1.40	1.60	1.75	1.90	2.10	2.35
	kW	0.7	0.8	0.9	1.0	1.0	1.2	1.3	1.4	1.6	1.8
4000 (1890)	RPM	660	690	725	760	795	830	860	895	930	965
	BHP	1.35	1.50	1.60	1.75	1.90	2.05	2.20	2.35	2.55	2.75
	kW	1.0	1.1	1.2	1.3	1.4	1.5	1.6	1.8	1.9	2.1
4500 (2125)	RPM	735	765	795	825	855	885	915	945	975	1005
	BHP	1.90	2.05	2.20	2.35	2.50	2.65	2.80	3.00	3.15	3.35
	kW	1.4	1.5	1.6	1.1	1.9	2.0	2.1	2.2	2.3	2.5
5000 (2360)	RPM	810	835	860	890	915	945	970	995	1025	1050
	BHP	2.60	2.75	2.85	3.05	3.20	3.40	3.55	3.70	3.90	4.10
	kW	1.9	2.1	2.1	2.3	2.4	2.5	2.6	2.8	2.9	3.1

NOTE: All data is measured external to the unit cabinet with dry coil, 2 in. (51 mm) filters in place, and roof mounting frame.

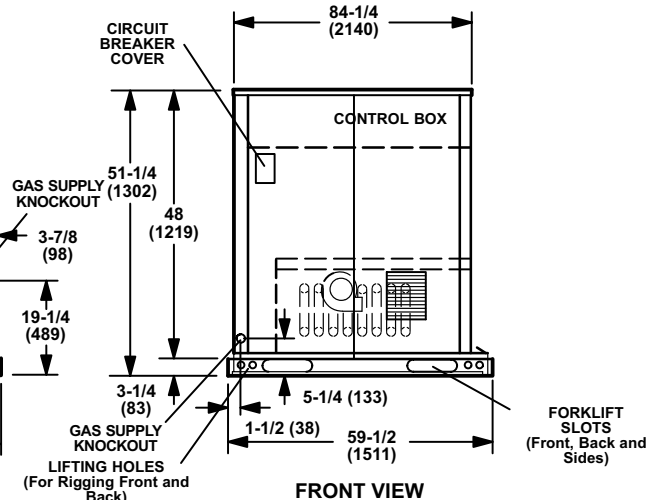
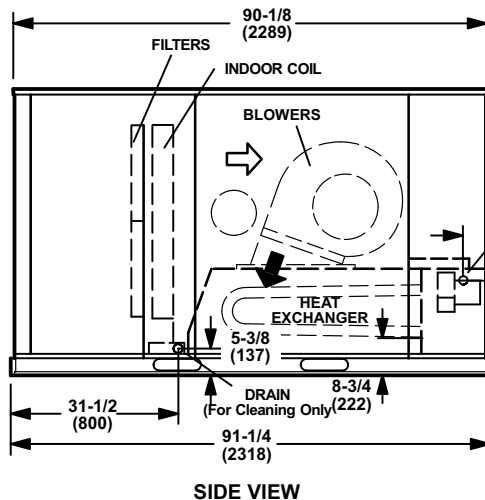
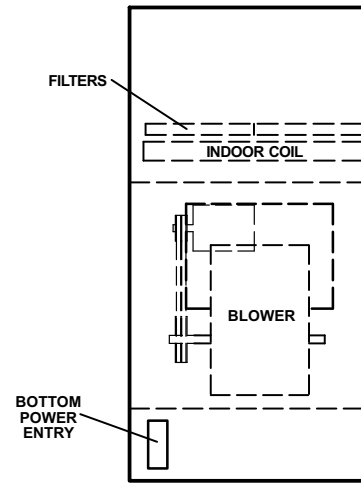
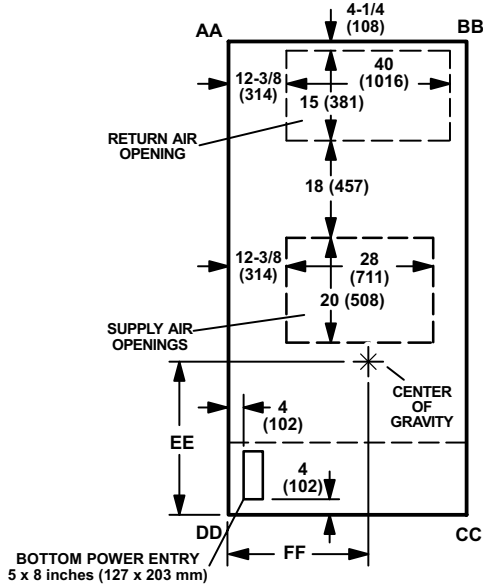
## UNIT DIMENSIONS — inches (mm)

### CORNER WEIGHTS — lbs. (kg)

Model Number	AA		BB		CC		DD	
	lbs.	kg	lbs.	kg	lbs.	kg	lbs.	kg
LGB120 (HEAT ONLY)	279	127	228	103	273	124	334	151

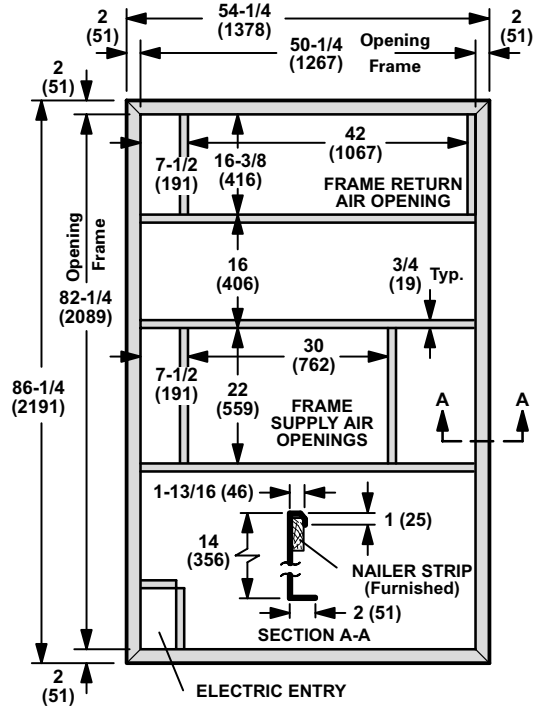
### CENTER OF GRAVITY — inches (mm)

Model Number	EE		FF	
	inch	mm	inch	mm
LGB120 (HEAT ONLY)	41-1/2	1054	26-3/4	679

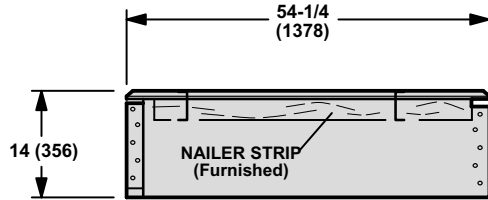


ACCESSORY DIMENSIONS — inches (mm)

ROOF MOUNTING FRAME WITH DOUBLE DUCT OPENING



TOP VIEW



SIDE VIEW

NOTE — Roof deck may be omitted within confines of frame.

TYPICAL FLASHING DETAIL FOR ROOF MOUNTING FRAME

