



©2011 Lennox Industries Inc.  
Dallas, Texas, USA

**INSULATION REPAIR KIT**

**INSTALLATION INSTRUCTION FOR INSULATION REPAIR KIT (88W86)**

**⚠ WARNING**

Improper installation, adjustment, alteration, service or maintenance can cause personal injury, loss of life, or damage to property.

Installation and service must be performed by a licensed professional installer (or equivalent) or a service agency.

**⚠ CAUTION**

Physical contact with metal edges and corners while applying excessive force or rapid motion can result in personal injury. Be aware of, and use caution when working near these areas during installation or while servicing this equipment.

**⚠ WARNING**



**Electric Shock Hazard.** Can cause injury or death. Unit must be grounded in accordance with national and local codes.

Line voltage is present at all components when unit is not in operation on units with single-pole contactors. Disconnect all remote electric power supplies before opening access panel. Unit may have multiple power supplies.

**⚠ WARNING**

Product contains fiberglass wool.

Disturbing the insulation in this product during installation, maintenance, or repair will expose you to fiberglass wool. Breathing this may cause lung cancer. (Fiberglass wool is known to the State of California to cause cancer.)

Fiberglass wool may also cause respiratory, skin, and eye irritation.

To reduce exposure to this substance or for further information, consult material safety data sheets available from address shown below, or contact your supervisor.

Lennox Industries Inc.  
P.O. Box 799900  
Dallas, TX 75379-9900

**Shipping and Packing List**

Check unit for shipping damage. Consult last carrier immediately if damage is found.

Catalog Number	Application	Part Name	Part Numbers	Qty
88W86 (608995-01)	Air Handlers	34" x 25" foil-face insulation	101179-12	1
		32" x 30" matt-face insulation	101197-05	1
		Insulation pins	98G9201	10
		Insulation washers	P-8-10480	10

**Field-Provided Tools and Supplies**

The following field-provided supplies may be required.

- Utility knife
- Thin Shuretape® Flex duct, Mylar® tape or similar product
- ELMER's® white glue or similar product
- Mask
- Gloves

**Application**

Matt or foil-faced insulation is installed in indoor air handlers to provide a barrier between surrounding ambient temperature and humidity and the varying conditions inside the air handler cabinet. If the insulation barrier is damaged (wet, ripped, torn or separated from the cabinet walls) the temperature/humidity differences between the inside and outside of the cabinet will contact each other and condensation will occur at the contact point (on the inside or outside of the metal cabinet).

To prevent this condensation from occurring, it is important that all damaged insulation areas be repaired or replaced.

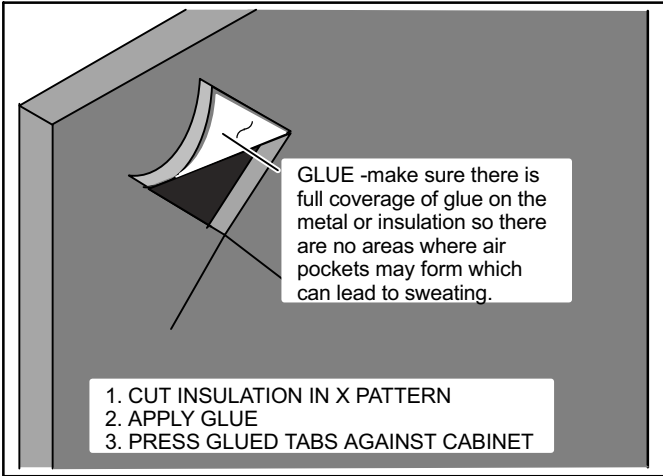
**Insulation Repair**

If the insulation has come loose from the cabinet and is in good condition then the insulation can be repaired. The insulation should be cut in an X pattern, peeled open and glued with an appropriate all-purpose glue (i.e., ELMER's® white glue) (see figure 1). Then placed back against a clean and dry cabinet surface being careful to not overly compress the insulation to affect its insulating R factor.



# ! IMPORTANT

DAMAGED INSULATION MUST BE REPAIRED OR REPLACED before the unit is put back into operation. Insulation loses its insulating value when wet, damaged, separated or torn.



**Figure 1. Repairing Insulation**

*NOTE - Foil face insulation must be foil taped after above repair is completed.*

If the insulation surface has been cut, tore or separation it must be glued and then taped with a similar aluminum foil tape. (Example: Thin Shuretape® Flex duct or Mylar® Tape)



**NOTE -** Due to the difficulty in existing installations to field-replace the gasket between the two-piece cabinet, aluminum foil tape is recommended for repairing the gasket.



**Figure 2. Cut Insulation and Improved Gasket**

## Insulation Replacement

If the insulation is damaged beyond repair, it must be replaced.

*Note: More than one insulation kit will be required to replace all insulation in most air handlers.*



**MATT-FACE INSULATION**

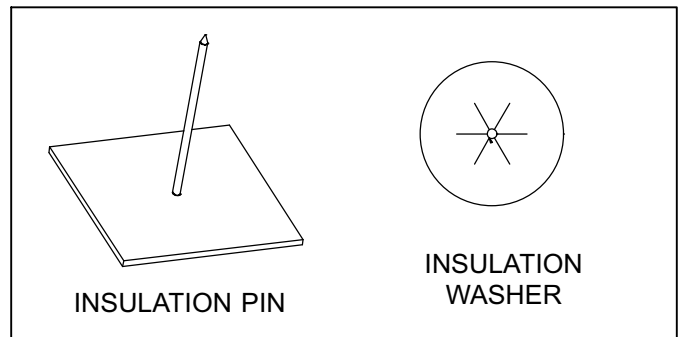


**FOIL-FACE INSULATION**

**Figure 3. Insulation Types**

## GENERAL TIPS:

1. Remove all damaged insulation.
2. All cabinet surfaces must be clean and free of original insulation and glue before applying the provided insulation pins and washers.



**Figure 4. Insulation Types**

3. Replacement pieces of insulation must be accurately cut to EXACTLY fit the removed piece of insulation. All metal surfaces on the inside of the cabinet must be completely covered.
4. All seams and edges of the insulation must be tucked under the cabinet edges and taped.