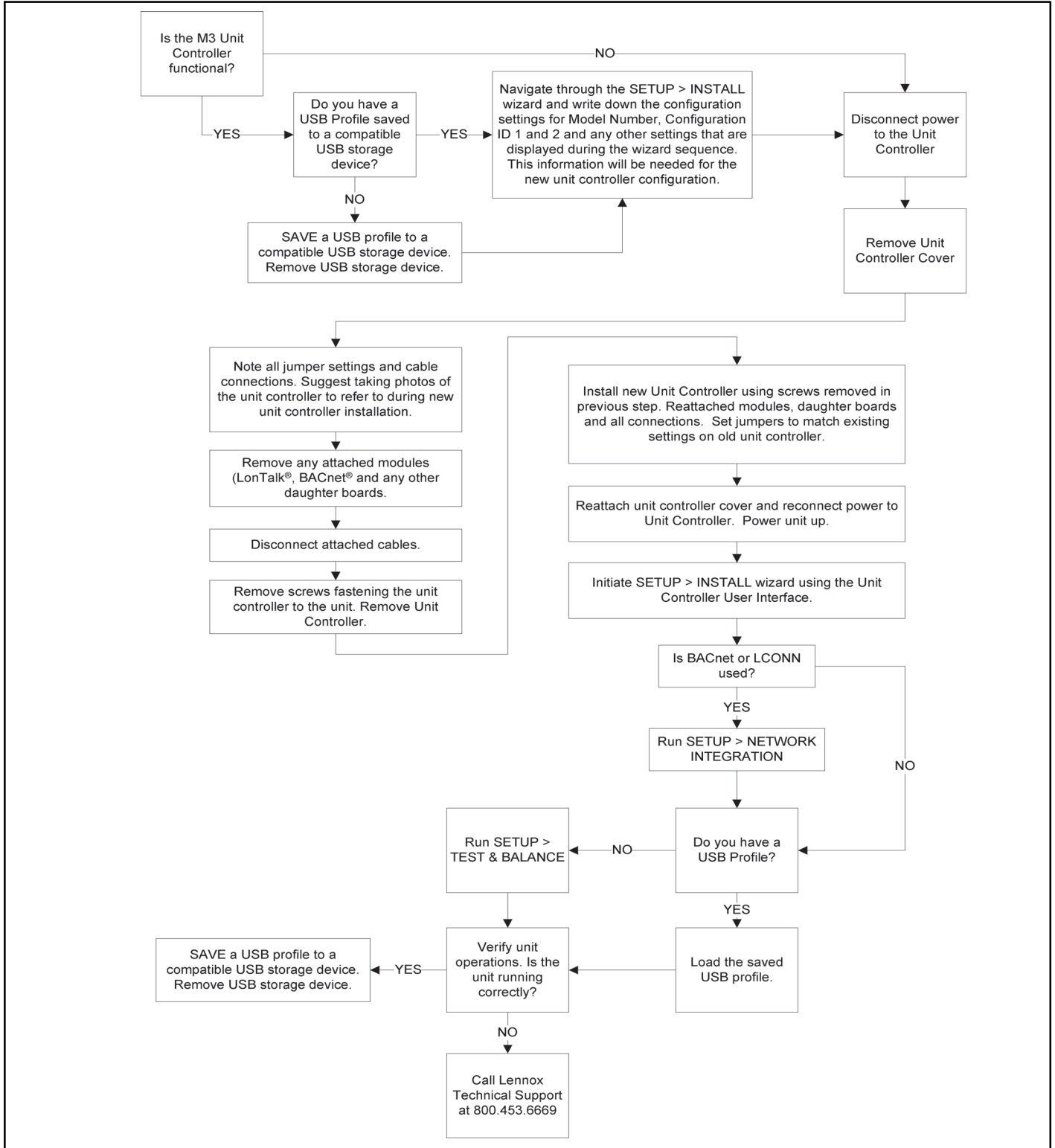
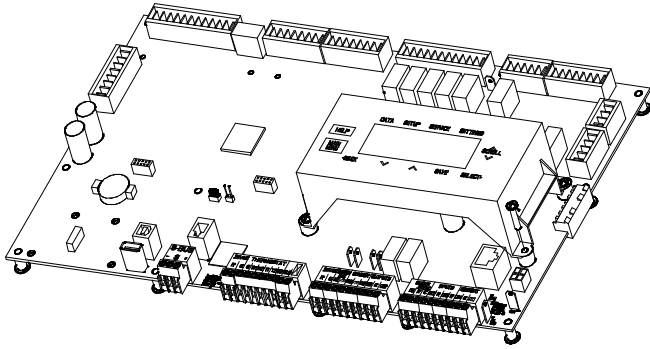


**PRODIGY® 2.0 — M3 UNIT CONTROLLER REPLACEMENT KIT INSTALLATION  
INSTRUCTION (14V60)**





## Overview

This kit (14V60) is a direct replacement for all factory installed M3 unit controllers and systems with replacement M3 unit controller (10X84).

**NOTE:** This replacement kit can be used on all existing Prodigy 2.0 systems. However, when replacing the M3 Unit Controller on **LCH/LGH036U-074U** models, this kit is mandatory. The original M3 Unit Controller Replacement kit (10X84) does not support the above reference models.

## Saving USB Profile (Old Unit Controller)

If there is a current saved USB Profile, then proceed to Loading USB Profile section. If not available, use the following procedure to save a USB Profile.

If the old unit controller is operational, run the **SETUP > INSTALL** wizard to capture the current configuration of the old unit controller. Data such as model number, configuration ID 1 and 2, catalog number, serial number and RTU description should all be written down in order to configure the new unit controller correctly. Once the above configuration settings has been collected, use the following procedure to save a USB Profile.

1. Insert a compatible USB storage device.
2. Go to **SERVICE > REPORT** and select **USB PROFILE SAVE**.
3. The USB PROFILE SAVE screen will appear requesting that you provide a unique name for the profile. Select a unique name and press SAVE.

**NOTE:** If "NOT APPLICABLE EQUIPMENT IS NOT PRESENT" is displayed, it may indicate the unit controller was unable to read the USB storage device. Remove and reinsert USB storage device and attempt to save the USB Profile again. If problem persists, try a different USB storage device.

4. If successful the screen will return to the REPORT menu options.

## Loading USB Profile (New Unit Controller)

The USB profile saves specific data only. Data saved includes configuration information such as Test & Balance settings and any parameters that were manually configured through **SETTINGS > RTU OPTIONS > EDIT PARAMETER** screen.

If a current USB Profile is available, use the following procedure to load the existing profile to the new unit controller.

**NOTE:** If no USB Profile is available, information concerning the unit configuration and accessories installed is available from the following sources:

- Unit Nameplate (catalog, model and serial numbers)
- Original Factory Unit Configuration label located in control box area
- Unit parameter labels located on unit or in the unit installation instruction should have recorded data concerning any parameters that were manually changed from defaults.


1. Run **SETUP > INSTALL** wizard.

**⚠ WARNING**

Improper installation, adjustment, alteration, service or maintenance can cause personal injury, loss of life, or damage to property.

Installation and service must be performed by a qualified installer or service agency.

**⚠ WARNING**



Electric Shock Hazard. Can cause injury or death. Unit must be grounded in accordance with national and local codes.

Line voltage is present at all components when unit is not in operation on units with single-pole contactors. Disconnect all remote electric power supplies before opening access panel. Unit may have multiple power supplies.

**⚠ CAUTION**

**ELECTROSTATIC DISCHARGE (ESD)  
Precautions and Procedure**

Electrostatic discharge can affect electronic components. Take precautions during unit installation and service to protect the unit's electronic controls. Precautions will help to avoid control exposure to electrostatic discharge by putting the unit, the control and the technician at the same electrostatic potential. Neutralize electrostatic charge by touching hand and all tools on an unpainted unit surface before performing any service procedure

## Shipping and Packing List

M3 Unit Controller Replacement Kit (14V60) contains the following:

- M3 Unit Controller (104661-01)
- M3 Unit Controller Installation and Setup Guide (507241-03)
- M3 Unit Controller Replacement Kit Installation Instruction (507394-02)

2. Select desired **LANGUAGE** and press **SAVE** button.
3. Select **DATE/TIME** and press **SAVE** button.
4. Select either **FAHRENHEIT** or **CELSIUS** and press **SAVE** button.
5. Enter the **MODEL NUMBER** from the unit nameplate or data collected from the Saving USB profile procedure. Press **SAVE** to continue.
10. Go to **SETUP > NETWORK INTEGRATION** and complete the network wizard.
11. Insert the USB storage device that contains the current saved USB profile.
12. Go to **SERVICE > REPORT > USB PROFILE LOAD**. Press **SAVE** to continue.

**NOTE:** Until Configuration ID 1, positions 1, 2 and 3 are configured correctly, alarm messages will be displayed. Press the **BACK** button to clear the messages from the display.

6. Enter the Configuration ID 1 and 2 information that was collected prior to removal of the existing M3 unit controller. If no information was collected, use the information located on a label to the right of the new M3 unit controller in the control box area. Press the **SAVE** button to continue after both IDs have been configured.

**NOTE:** If the Original Factory Unit Configuration labels are missing from the unit, refer to the M3 Installation and Setup Guide included with this kit for model number and configuration ID 1 and 2 setting information.

**NOTE:** Information for steps 7 and 8 is also listed on the Unit Nameplate.

7. Enter the **Catalog Number** and press **SAVE**.
8. Enter the **Serial Number** and press **SAVE**.
9. Enter the **RTU Description** and press **SAVE**.

**NOTE:** Depending on accessories configured, additional settings will be prompted to be completed.

**NOTE:** If “NOT APPLICABLE EQUIPMENT IS NOT PRESENT” is displayed, it may indicate either the unit controller was unable to read the USB storage device or it is missing. Remove and reinsert USB storage device and attempt to load the USB Profile again. If the issue continues, all data will have to be entered manually.

13. Select the desired USB Profile by using the adjust and set values arrows. Select the desired USB Profile and press **SAVE**.
14. The screen will return to the **REPORT** menu options. Proceed to the next section below.

### Running Setup > Test and Balances

1. If a USB Profile was loaded, Test & Balances settings have already been configured and this procedure is not required.
2. If no USB Profile was available, then go to **SETUP > TEST & BALANCE** and complete all applicable menu options under that section.

**NOTE:** Refer to the Original Factory Unit Configuration label located in control box area and additional data located on the unit access panel which provide more information concerning factory and field settings.