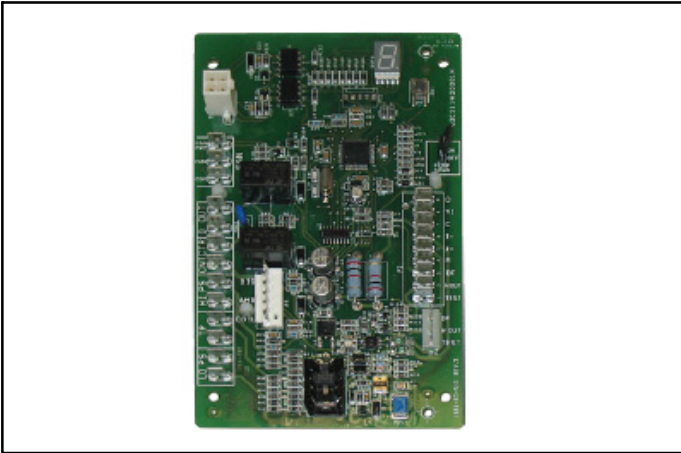


**INSTALLATION INSTRUCTIONS FOR CONTROL REPLACEMENT KIT (13H08) 614111-02**



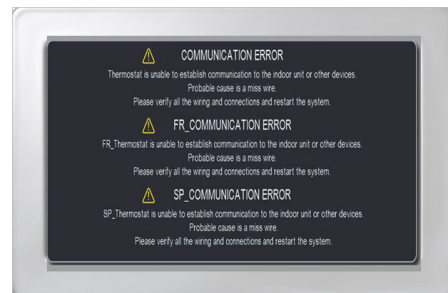
**Installation and Configuration of New Outdoor Control using Room Thermostat**

1. Disconnect all power to system (indoor and outdoor units).
2. Leave indoor thermostat on the wall base.
3. Tag location of wires attached to the existing control and use wiring diagram on access panel of outdoor unit for reference.
4. Remove original outdoor control.
5. Install new outdoor control in the same location as the original control.
6. Reconnect wires to same terminals as original outdoor control.
7. Turn main power **ON** to both the indoor and outdoor units.
8. During initial thermostat start-up the following screen will appear (see figure 1). This indicates that the thermostat is active and booting up.



**Figure 1. Boot-Up Screen**

9. During initial thermostat start-up if the following screen appears (see figure 2), this will indicate the thermostat has been incorrectly wired or has shorted wires. Turn power off to the system and verify that all wiring is correct.



**Figure 2. Communication Error Screen**

**⚠ WARNING**

Improper installation, adjustment, alteration, service or maintenance can cause personal injury, loss of life, or damage to property.

Installation and service must be performed by a qualified installer or service agency.

**⚠ WARNING**



Electric Shock Hazard. Can cause injury or death. Unit must be grounded in accordance with national and local codes.

Line voltage is present at all components when unit is not in operation on units with single-pole contactors. Disconnect all remote electric power supplies before opening access panel. Unit may have multiple power supplies.

**Shipping and Packing List**

**Package 1 of 1 contains:**

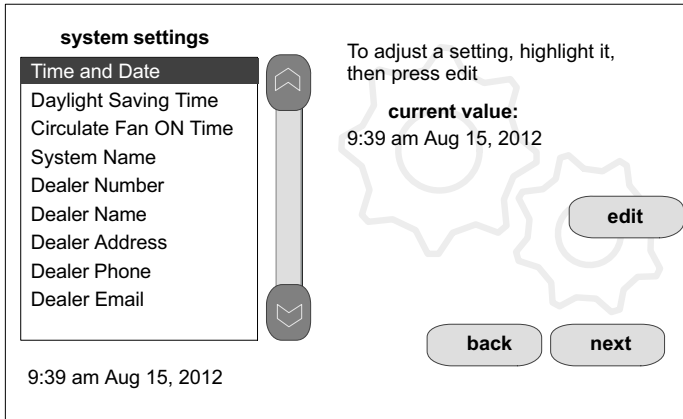
- 1 - Outdoor control (part # 103686-04)

**Application**

This kit can be field applied to models that use any 103686-xx control.

10. Adjusting System Settings — Set Time and Date

Use the arrows to select **Time and Date**; press **edit** to proceed to the **Set current time and date** screen.



**Figure 3. View/Edit Time and Date**

When **Time and Date** screen appears, enter the correct date as follows:

- Use the left and right arrows to change the month and year.
- Touch a day of the month to select it.
- Press on the hour or minute; up down arrows appear to allow change.
- Touch the **am/pm** field to toggle it between am and pm.
- When the correct date and time is set, press **save** to save settings and return to previous settings screen.

Touch **next** to continue to next screen.

11. Circulate Fan ON Time Setting

*NOTE - If the circulate fan mode is on, a timer is set to measure all the time that the fan is blowing, regardless if it is running to deliver heating or cooling or just for circulation.*

**Circulate** is enabled on the user's **home** screen or **system settings** page. It keeps air circulating from 15% to 50% percent of time. The following settings approximate how long the fan will run at these typical settings:

- 15% (9 minutes fan run time per hour)
- 25% (15 minutes fan run time per hour)
- 35% (21 minutes fan run time per hour)
- 45% (27 minutes fan run time per hour).

12. Adjusting System Settings — Dealer Number

Either the dealer number or phone number is required. Once either number is entered, all other fields will automatically be populated once the thermostat has been registered during the Wi-Fi setup procedure later on in this instruction (if the dealer has an account with the company already).

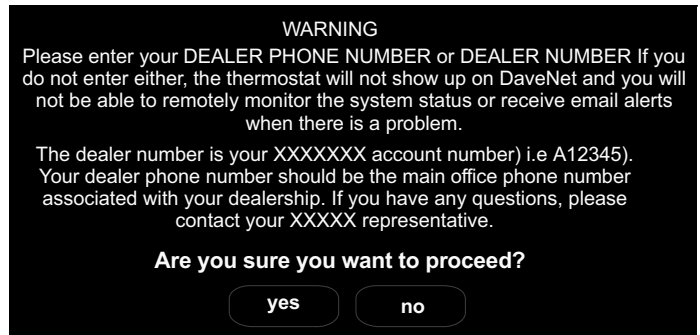
*NOTE - Dealer number is the dealer manufacturer's account number. Dealer phone number is the dealer's main office phone number.*

13. Use the arrows to scroll down to the **Dealer Number** or **Dealer Phone** setting. Press the **edit** button.

14. Enter the **Dealer Number** or **Dealer Phone Number** using the on-screen keyboard (see figure 4). Press **save** to continue.

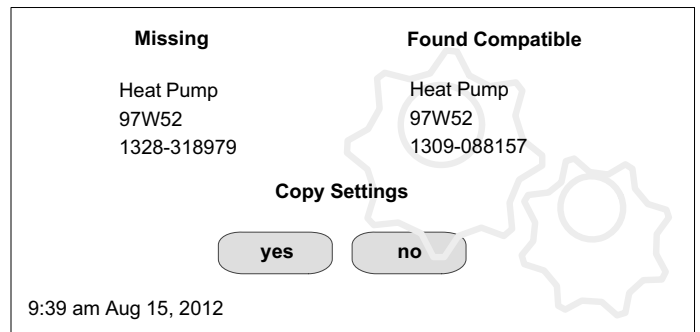
**NOTE: If a Dealer Number or Dealer Phone Number is not entered and the next button is selected, a pop-up warning screen will appear.**

15. Press **yes** to continue to the **System Devices** screen. Press **no** to return to the **system settings** screen.



**Figure 4. Dealer Number Selection and Warning**

16. A copy settings screen will appear next. Press **Yes** and a copy of the original unit information will be downloaded into the new control.



**Figure 5. Copy Settings Screen.**

**Installation and Configuration of New Outdoor Control with Room Thermostat Off Wall Base**

1. Disconnect all power to system (Indoor and outdoor units)
2. Remove the communicating thermostat from the wall base.
3. Tag location of wires attached to the existing control and use wiring diagram on access panel of outdoor unit for reference.
4. Remove original outdoor control.
5. Install new outdoor control in the same location as original outdoor control.
6. Reconnect wires to same terminals as original outdoor control.
7. With communicating thermostat still removed from the wall base, turn main power onto indoor unit.
8. Program the new outdoor control using the flow chart on Figure 6 as reference.
9. Turn main power **ON** to outdoor unit.
10. Turn main power **OFF** to indoor unit.
11. Remount room thermostat onto wall base.
12. Turn main power **ON** to indoor unit.
13. Refer to step 8 on page 1 to continue the setup procedure.

## Configuring Unit

When installing a replacement outdoor control, the unit selection code may have to be manually assigned using the 7-segment display and push button on the control. The unit code sets unit type, capacity and outdoor fan RPM.

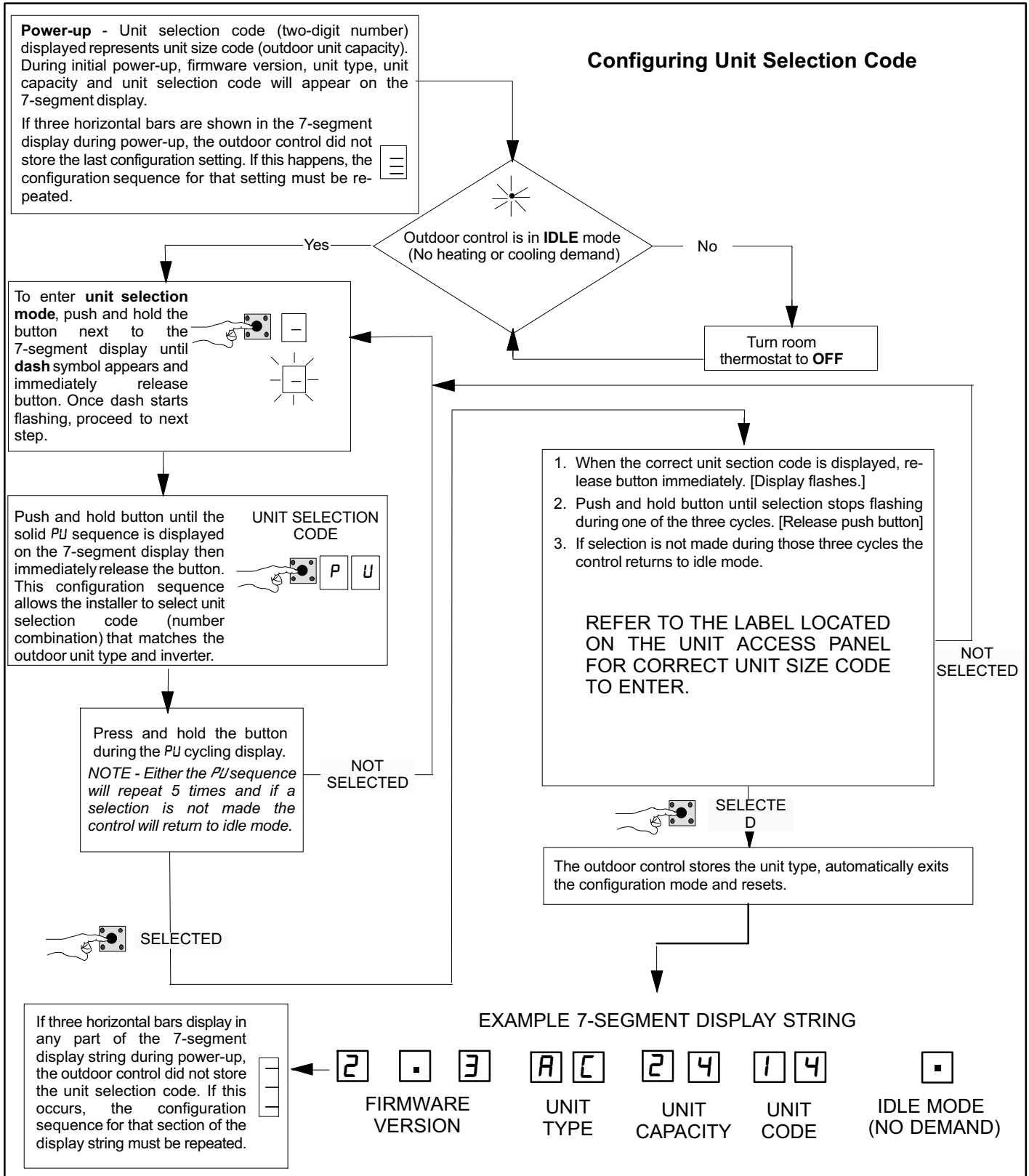
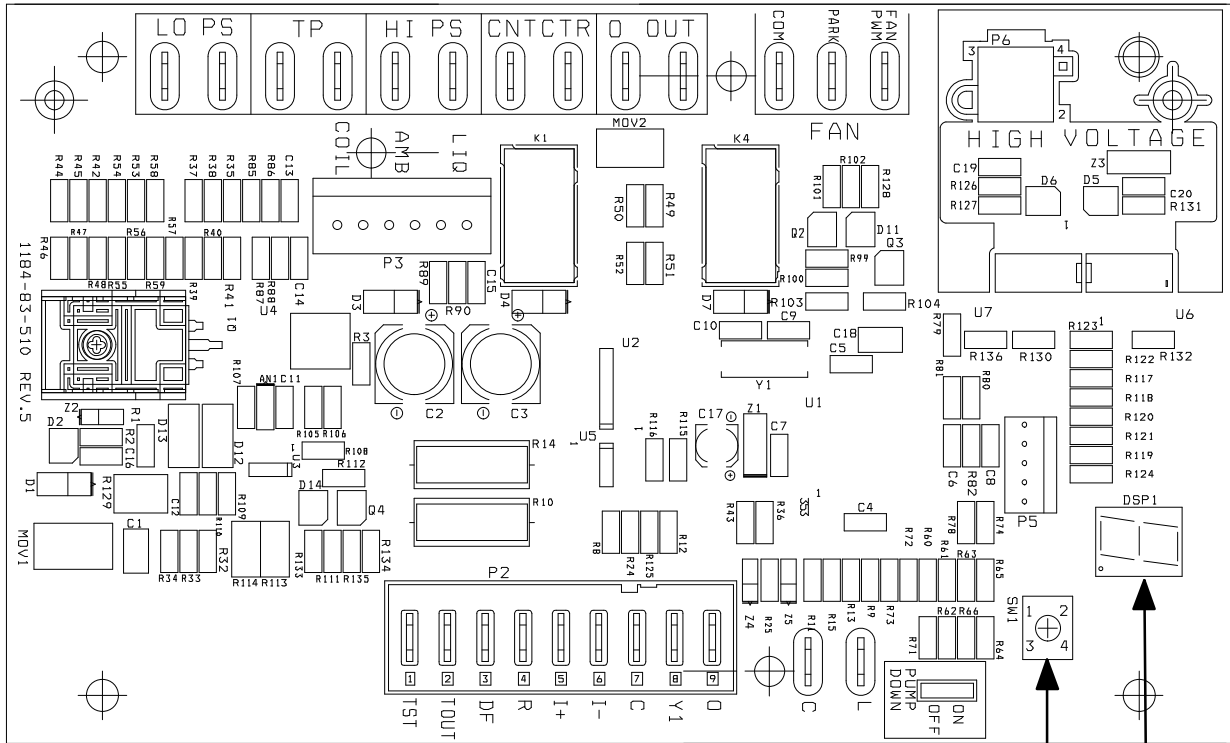


Figure 6. Configuring Unit Selection Code



*NOTE - The green LED located on the outdoor control flashes when communication occurs between the outdoor control and either the thermostat or the inverter.*

PUSH  
BUTTON

7-SEGMENT  
DISPLAY

**Figure 7. Outdoor Control Unit**

For additional information concerning terminals, seven-segment display and jumper settings, refer to either the unit installation instruction or service manual.