

**INSTALLATION INSTRUCTIONS FOR DISCHARGE AIR BAFFLE KITS  
(13X59), (13X60) & (13X62) USED WITH 90% EFFICIENCY FURNACES**

**Application**

Kits 13X59, 13X60, and 13X62 can be used to provide a more even discharge air temperature for 90% furnace installations where the discharge air temperatures vary more than desired.

**NOTE** - The discharge air baffle kit may not be applicable to installations where the coil does not set directly on the furnace.

**Shipping & Packing List**

Package 1 of 1 contains the following:

- 2 - Baffles
- 6 - Screws

**⚠ WARNING**



**Electric shock hazard. Can cause injury or death. Before attempting to perform any service or maintenance, turn the electrical power to unit OFF at disconnect switch(es). Unit may have multiple power supplies.**

**⚠ WARNING**

**Improper installation, adjustment, alteration, service or maintenance can cause property damage, personal injury or loss of life. Installation and service must be performed by a licensed professional installer (or equivalent), service agency or the gas supplier.**

**⚠ CAUTION**

**Sharp Edges Hazard. Equipment sharp edges can cause injured. Use protective gloves when grasping equipment edges.**

**Assembly**

Follow the steps below using figures 1, 2 or 3 for dimensions.

Install the backside baffle first as the front side baffle may be cumbersome if installed first.

- 1 - Make your measurement from the top of the coil or furnace cabinet depending on application. Cut a slot *width wise* in the back of the plenum in order to slide the baffle through. *In some cases it may be necessary to cut a hole through the front side of the plenum to install the backside baffle. If this is the case a slot in the back of the plenum wont be needed.*
- 2 - Slide the baffle through the slot in the back of the plenum until the break is flush with the plenum. Secure with provided screws. If installing the baffle through the front side of the plenum, make your measurement and secure the baffle with the provided screws. Seal to prevent air leaks.
- 3 - If a hole was cut in the front side of the plenum it will be necessary to "patch" firmly before installing the front baffle. Make your measurement from the top of the coil or furnace cabinet depending on application. Cut a slot *width wise* in the front of the plenum in order to slide the baffle through.
- 4 - Slide the baffle through the slot in the front of the plenum until the break is flush with the plenum. Secure with provided screws.
- 5 - Seal to prevent any air leaks.

Upflow Furnace Without a Coil  
Install Two Air Baffles

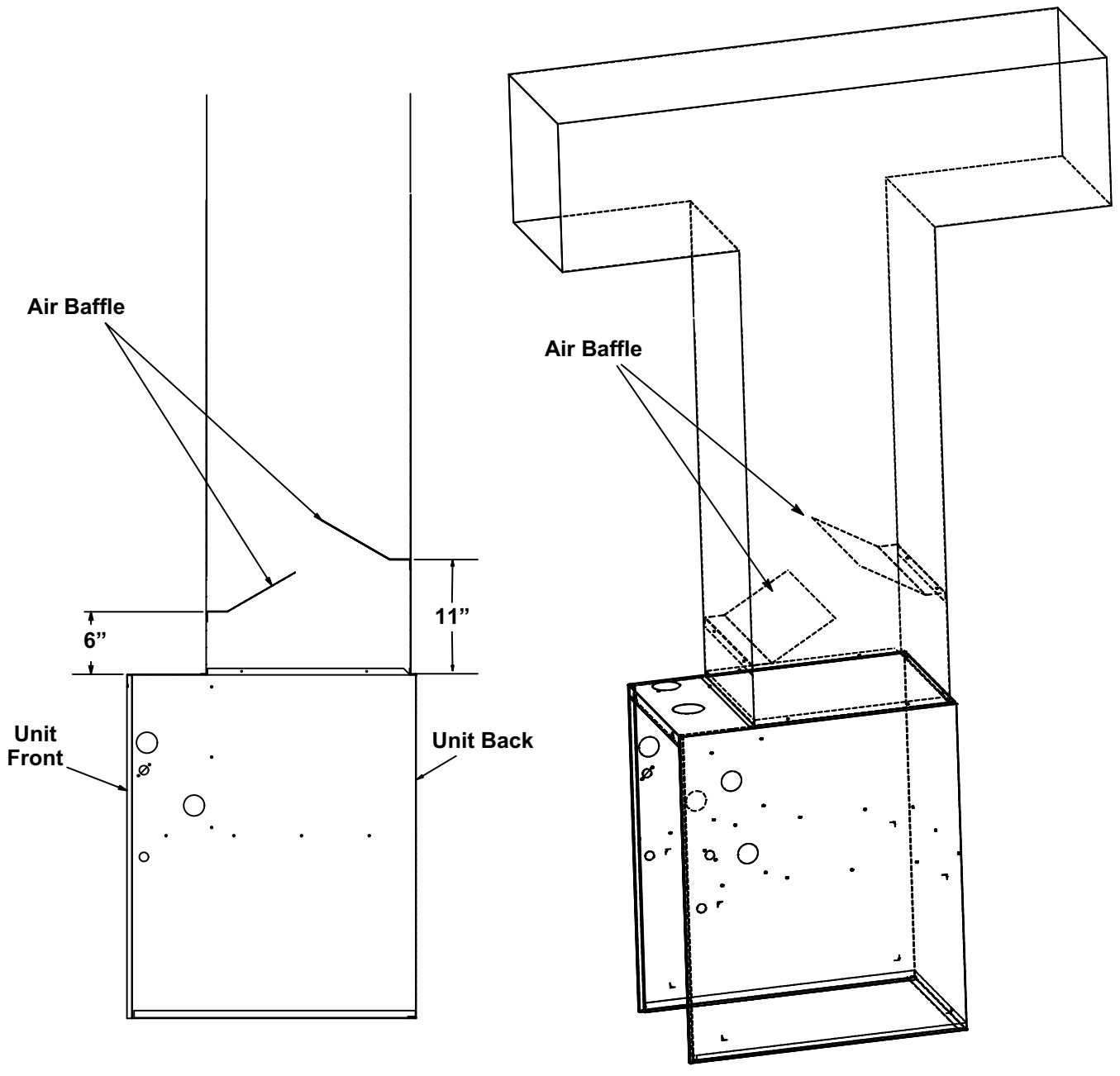


Figure 1

Upflow Furnace With Coil When Plenum Is 24" Or Less  
Install One Air Baffle

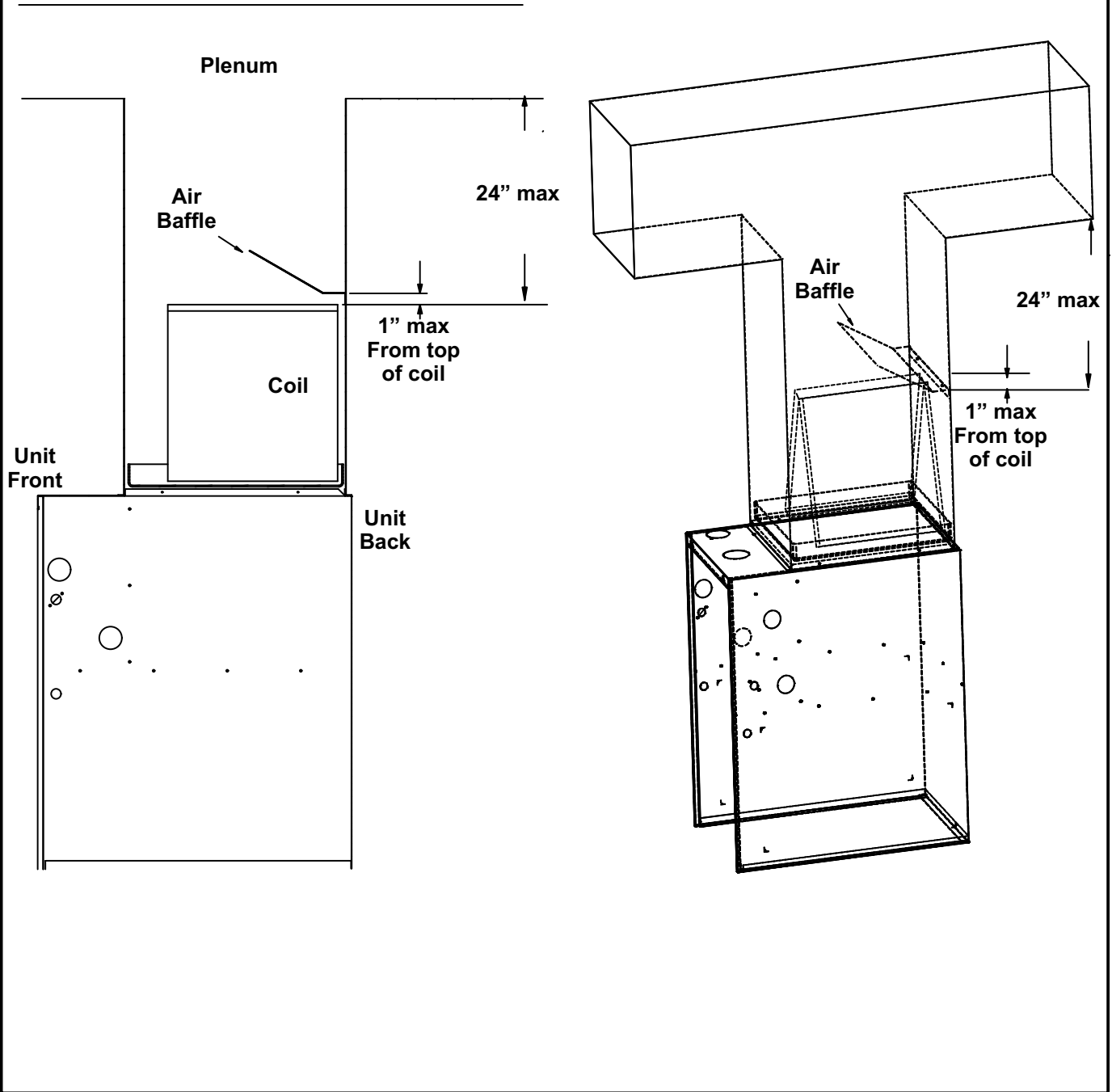


Figure 2

Upflow Furnace With Coil  
Install Two Air Baffles

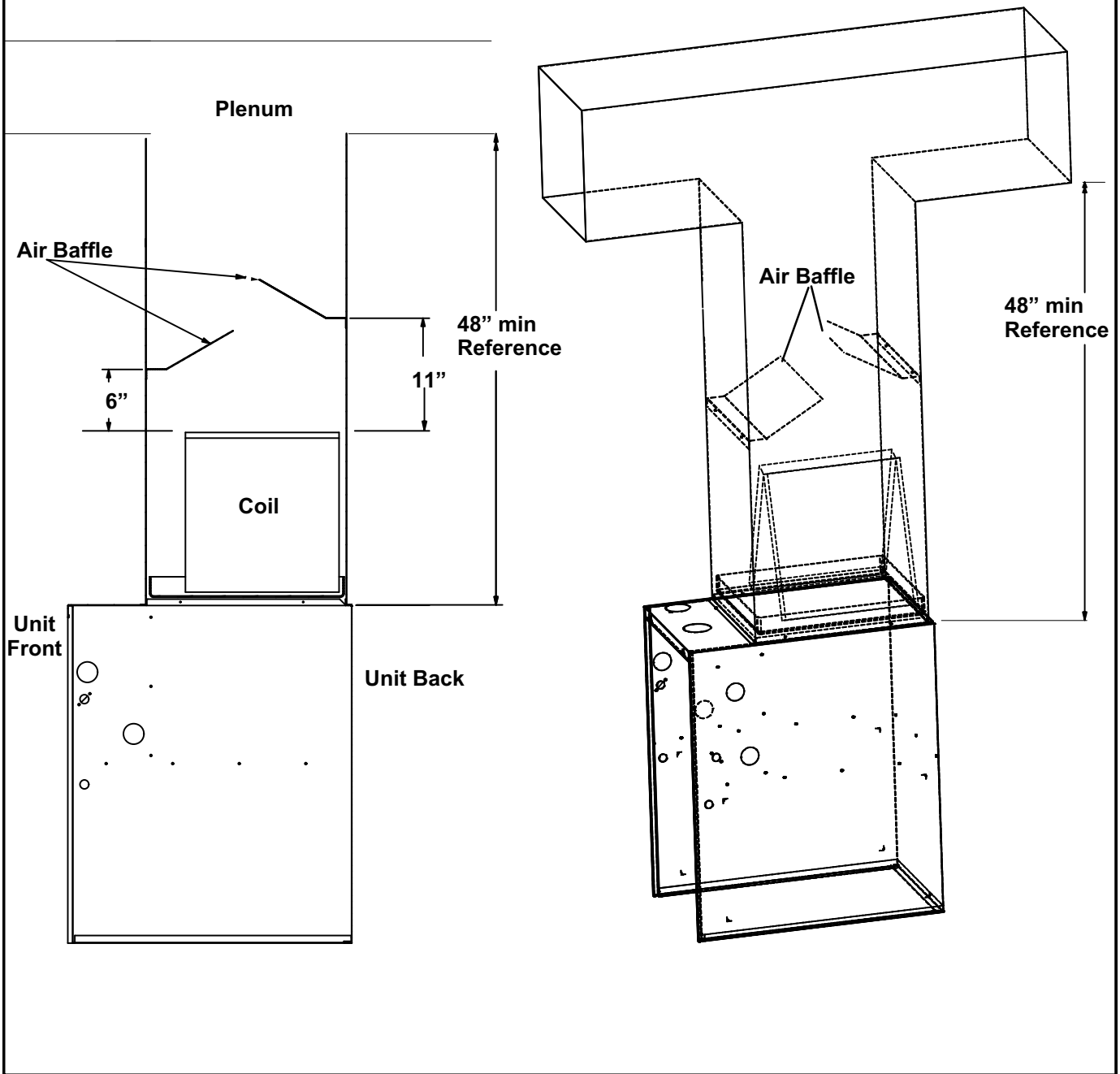


Figure 3