

BLOWER SPEED CHART

| UNIT | FACTORY CONNECTED SPEED TAPS | | | MOTOR SPEEDS AVAILABLE |
|---------|------------------------------|--------|-------|------------------------|
| | COOL | HEAT | PARK | |
| 24B-045 | RED | YELLOW | ---- | 3 |
| 36B-045 | YELLOW | RED | BROWN | 4 |
| 36B-070 | YELLOW | RED | BROWN | 4 |
| 36C-090 | YELLOW | RED | BROWN | 4 |
| 48C-090 | YELLOW | RED | BROWN | 4 |
| 48C-110 | YELLOW | RED | BROWN | 4 |
| 60C-090 | YELLOW | RED | BROWN | 4 |
| 60C-110 | YELLOW | RED | BROWN | 4 |
| 60D-135 | YELLOW | RED | BROWN | 4 |

BLOWER SPEED SELECTION

HI ← → LO

| SPEED TAPS | BLACK | YELLOW | RED | MOTOR SPEEDS AVAILABLE |
|------------|-------|--------|-----|------------------------|
| BLACK | --- | --- | --- | 3 |
| BROWN | --- | --- | --- | 4 |

THERMOSTAT HEAT ANTICIPATION SETTINGS

.65 AMP HONEYWELL VALVE
.50 AMP WHITE-RODGERS VALVE

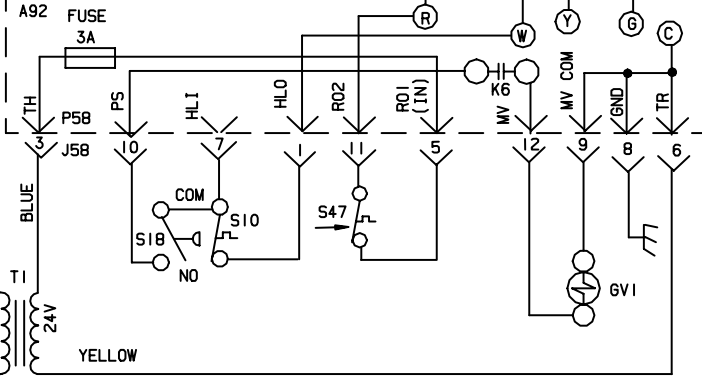
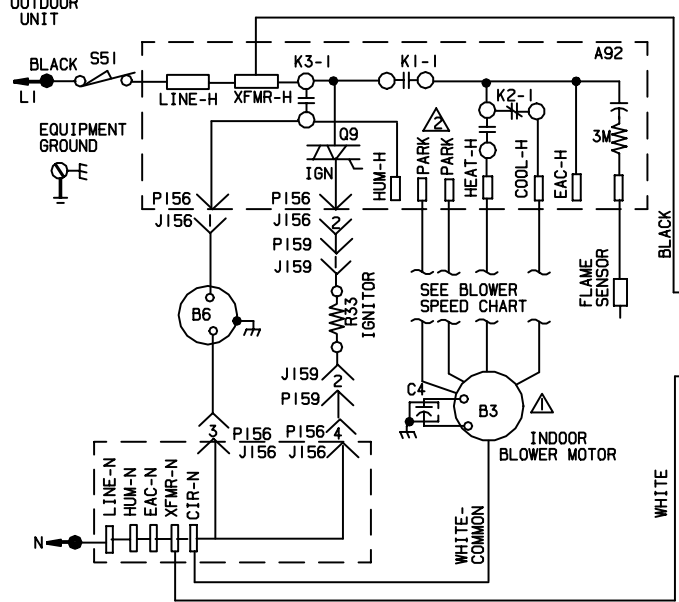
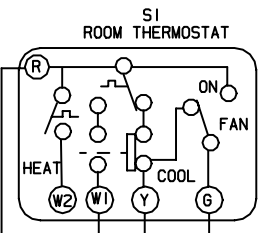
JACKPLUG CHART

| | |
|---------|---------------------------|
| J, P58 | JACK/PLUG-BURNER CONTROL |
| J, P156 | JACK/PLUG-INDUCER/IGNITER |
| J, P159 | JACK/PLUG-IGNITER |

WARNING-
ELECTRIC SHOCK HAZARD, CAN CAUSE INJURY OR DEATH. UNIT MUST BE GROUNDED IN ACCORDANCE WITH NATIONAL AND LOCAL CODES.

NOTE-
IF ANY WIRE IN THIS APPLIANCE IS REPLACED, IT MUST BE REPLACED WITH WIRE OF LIKE SIZE, RATING AND INSULATION THICKNESS.

- ⚠ **IMPORTANT-** TO PREVENT MOTOR BURNOUT, NEVER CONNECT MORE THAN ONE LEAD TO ANY ONE CONNECTION.
- ⚠ **PARK TERMINALS ARE UNPOWERED TERMINALS.** ALL UNUSED MOTOR LEADS MUST BE WIRED TO A PARK TERMINAL.
- ⚠ **FIELD SUPPLIED ACC. WIRE.**
- ← DENOTES OPTIONAL COMPONENTS
- LINE VOLTAGE FIELD INSTALLED
- - - CLASS II VOLTAGE FIELD WIRING



LENNOX® HEATING UNITS-GAS

| | |
|-------------------|-------------------|
| G4 IUF-24B-045-01 | G4 IUF-48C-110-01 |
| G4 IUF-36B-045-01 | G4 IUF-60C-090-01 |
| G4 IUF-36B-070-01 | G4 IUF-60C-110-01 |
| G4 IUF-36C-090-01 | G4 IUF-60D-135-01 |
| G4 IUF-48C-090-01 | |

Supersedes

1002

New Form No. 533,433W