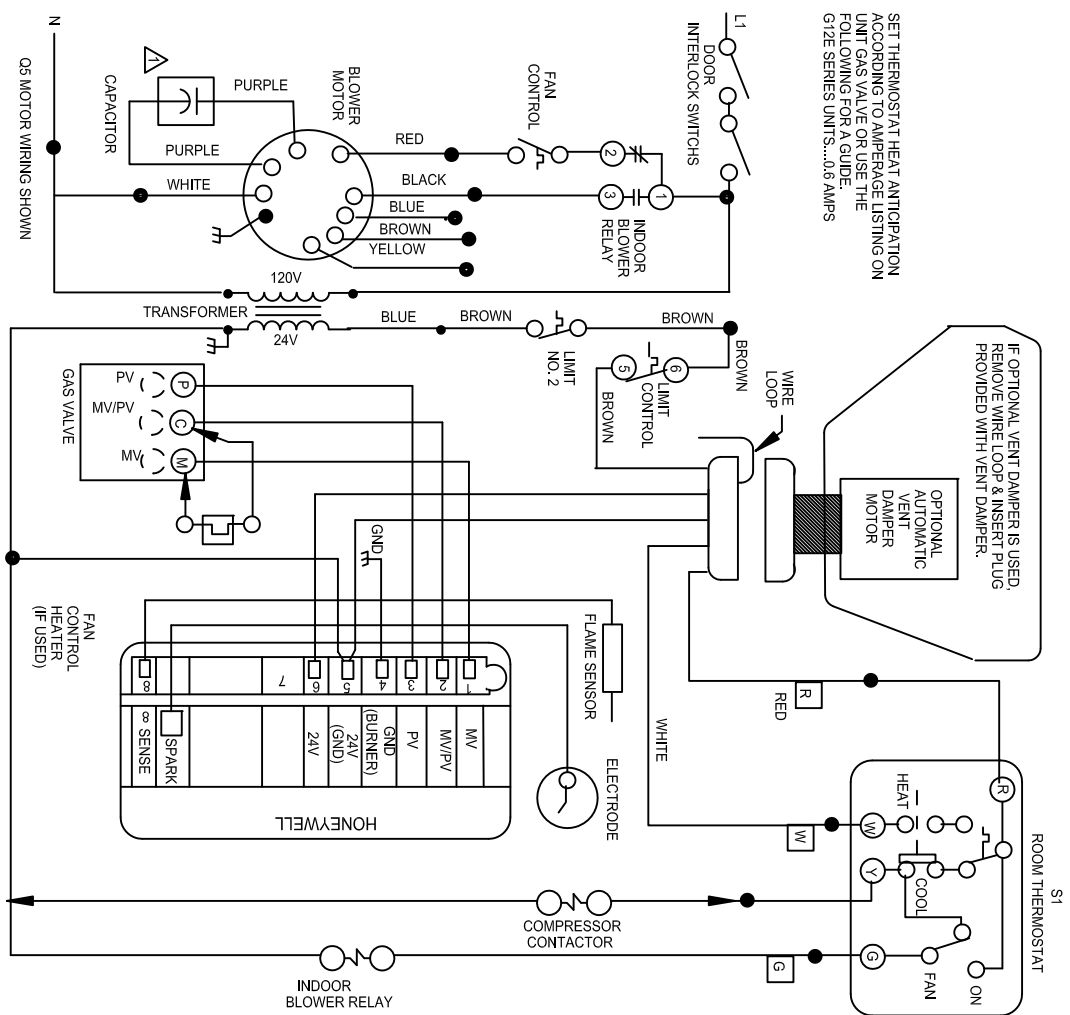


BLOWER SPEED SELECTION

IMPORTANT-TO PREVENT MOTOR BURNOUT NEVER CONNECT MORE THAN ONE MOTOR LEAD TO ANY ONE CONNECTION TAPE UNLESS MOTOR LEADS SEPARATELY.

SPEED	BLOWER MOTOR LEADS		
	D2	O3	O5
LOW	RED	RED	RED
MEDIUM LOW	...	YELLOW	YELLOW
MEDIUM	...	YELLOW	BLUE
MEDIUM HIGH	...	BROWN	BROWN
HIGH	BLACK	BLACK	BLACK

⚠️ D2 SERIES UNITS ARE LESS CAPACITOR.



WIRING DIAGRAM

1/1/08

QR CODE

G12RD2E-55-9
G12RQ3E-82-9
G12RQ3E-110-9
WITH HONEYWELL IGNITION

G12RQ3E-137-9
G12RQ5E-137-9
G12RQ5E-165-9

Supersedes Form No. **535,790W**
New Form No.

© 2008
Litho U.S.A.