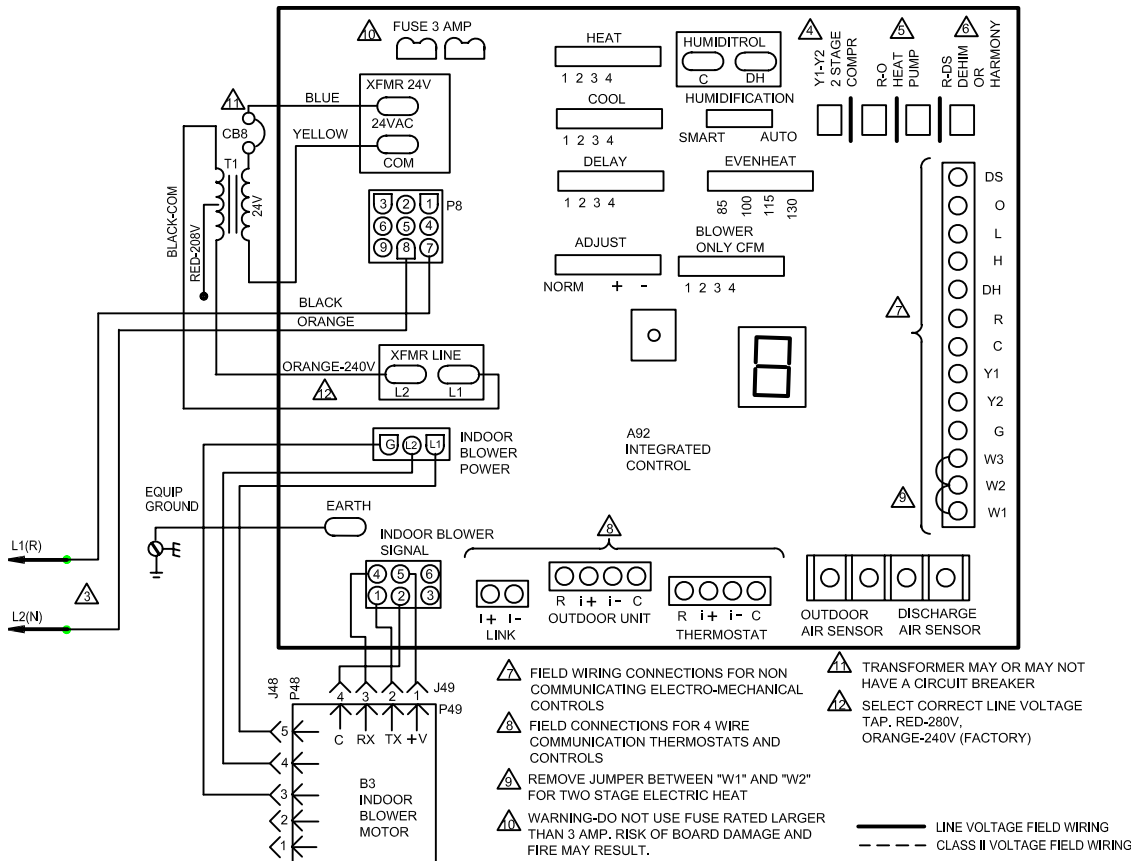


KEY	DESCRIPTION
A92	CONTROL-INTEGRATED
B3	MOTOR-BLOWER
J48	JACK-MOTOR-VARIABLE SPEED
J49	JACK-MOTOR-VARIABLE SPEED
P8	PLUG-ELECTRIC HEAT
P48	PLUG-MOTOR-VARIABLE SPEED
P49	PLUG-MOTOR-VARIABLE SPEED
T1	TRANSFORMER-CONTROL

RECOMMENDED BLOWER SPEED TAP SELECTION

SPEED TAP SELECTION	COOL		HEAT	
	CONDENSING UNIT	HEAT PUMP	CONDENSING UNIT WITH ELECTRIC HEAT ONLY	HEAT PUMP WITH ELECTRIC HEAT
-018 -024 -030 -036	COOL PIN #3	COOL PIN #3	HEAT PIN #4	HEAT PIN #4
-042	COOL PIN #3	COOL PIN #3	HEAT PIN #3	HEAT PIN #3
-048	COOL PIN #2	COOL PIN #2	HEAT PIN #1	HEAT PIN #1
-060	COOL PIN #3	COOL PIN #3	HEAT PIN #1	HEAT PIN #1
-068	COOL PIN #3	COOL PIN #3	HEAT PIN #4	HEAT PIN #4



- ⚠ REFER TO FACTORY BLOWER SPEED TAP SELECTION CHART ON UNIT FOR BLOWER SPEED INFORMATION.
- ⚡ NEC/CEC CLASS 2 3VA
- ⚠ USE COPPER CONDUCTORS ONLY. REFER TO UNIT RATING PLATE FOR MINIMUM CIRCUIT AMPACITY AND MAXIMUM OVERCURRENT PROTECTION SIZE
- ⚠ LINK "Y1" TO "Y2" FOR SINGLE STAGE UNIT. CLIP LINK "Y1" TO "Y2" FOR TWO STAGE UNIT
- ⚠ LINK "R" TO "O" IS USED WITH AC UNIT. CLIP LINK "R" TO "O" WHEN HEAT PUMP IS USED
- ⚠ REMOVE LINK BETWEEN "R" AND "DS" WHEN DEHUMIDIFICATION CONTROL IS USED

LENNOX COILS-BLOWER COIL UNITS

CBX32MV, CBX40UHV

COIL SECTION-

Supersedes

01/12

Form No. 537202-01

01/12

© 2011 Litho U.S.A.