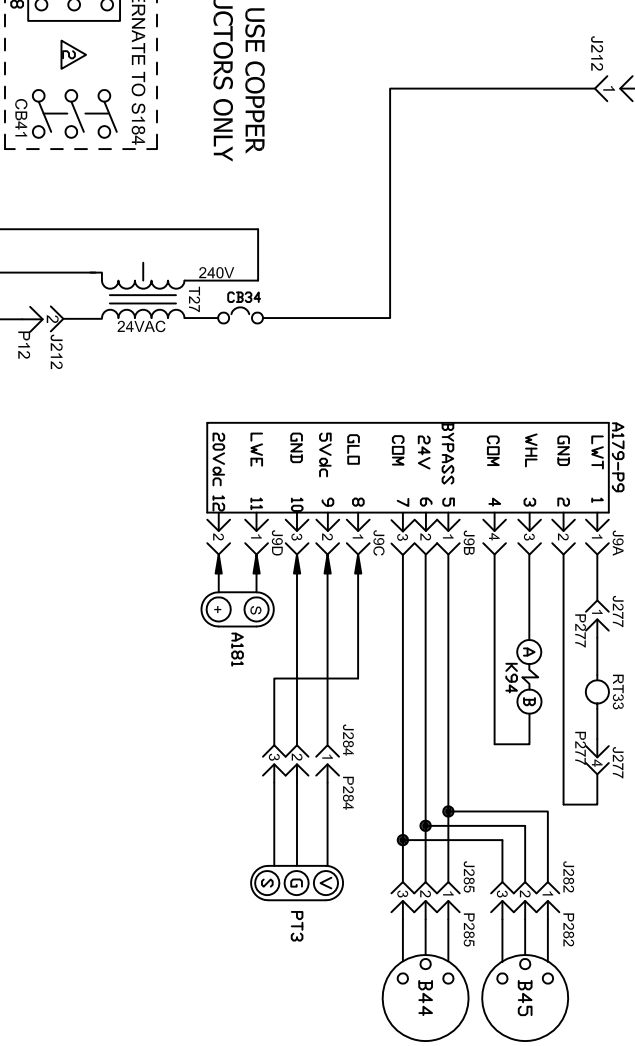
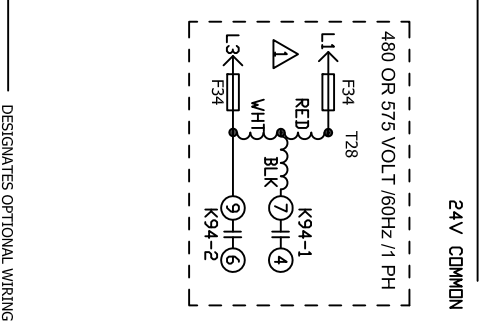
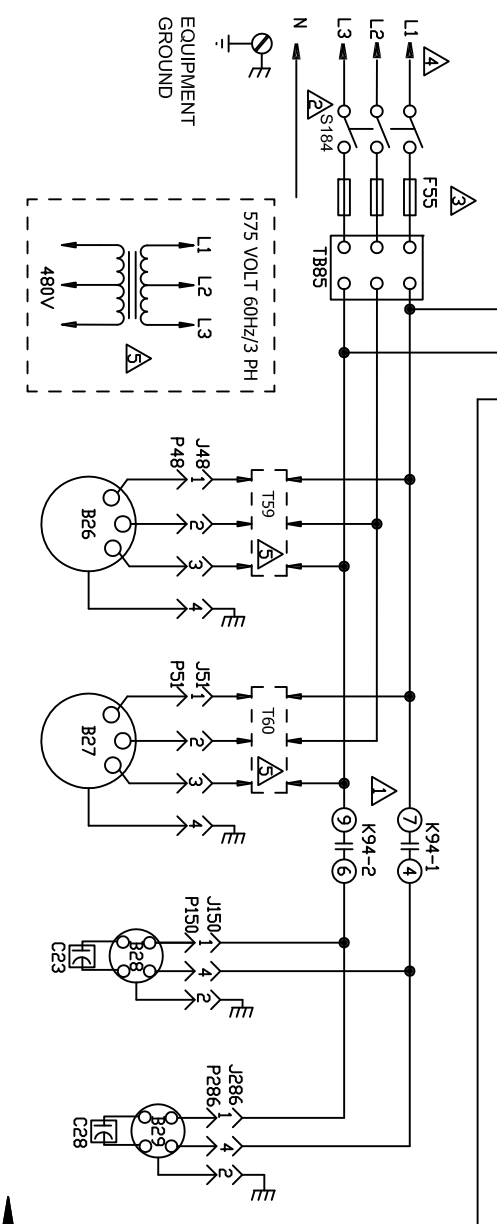
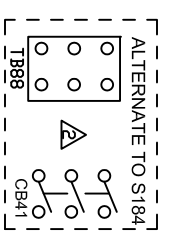


JIP	JACK/PLUG DESCRIPTION
12/212	24VAC TO ER BOARD (A179)
48	POWER TO EXHAUST AIR BLOWER
51	POWER TO FRESH AIR INTAKE BLOWER
150	ER WHEEL MOTOR 1
274	FRESH AIR BLOWER CONTROL
275	OUTDOOR AIR TEMP SENSOR
276	RETURN AIR TEMP SENSOR
277	LEAVING WHEEL TEMP SENSOR
278	EXHAUST BLOWER CONTROL
279	INTAKE CFM SENSOR
280	OUTDOOR AIR DAMPER
281	EXHAUST CFM SENSOR
282	EXHAUST BYPASS DAMPER
283	WHEEL INTAKE PRESSURE SENSOR
284	GLOBAL PRESSURE SENSOR
285	FRESH AIR BYPASS DAMPER
286	ER WHEEL MOTOR 2



KEY	COMPONENT/DESCRIPTION
A179	CONTROL, ENERGY RECOVERY BOARD
A180	SENSOR, OUTDOOR AIR ENTHALPY
A181	SENSOR, LEAVING WHEEL ENTHALPY
A182	SENSOR, RETURN AIR ENTHALPY
B26	MOTOR, EXHAUST BLOWER
B27	MOTOR, FRESH AIR INTAKE BLOWER
B28	MOTOR, ER WHEEL 1
B29	MOTOR, ER WHEEL 2
B30	MOTOR, OUTDOOR AIR DAMPER
B44	MOTOR, FRESH AIR BYPASS DAMPER
B45	MOTOR, EXHAUST BYPASS DAMPER
C23	CAPACITOR, ER WHEEL 1
C28	CAPACITOR, ER WHEEL 2
CB34	CIRCUIT BREAKER, T27
CB41	CIRCUIT BREAKER, MAIN ERV
F34	FUSE, TRANSFORMER T28, PRIMARY
F55	FUSE, MAIN ERV
K94	RELAY, ER WHEEL(S)
P11	SENSOR, INTAKE CFM1
P12	SENSOR, WHEEL INTAKE PRESSURE
P13	SENSOR, GLOBAL PRESSURE
P14	SENSOR, EXHAUST CFM1
PT3	SENSOR, LEAVING WHEEL TEMPERATURE
PT4	SENSOR, OUTDOOR AIR TEMPERATURE
RT34	SENSOR, RETURN AIR TEMPERATURE
RT35	SENSOR, DIRTY FILTER 1
S181	SWITCH, DIRTY FILTER 2
S182	SWITCH, WHL EXHAUST PRESSURE
S183	SWITCH, DIRTY FILTER 1
S184	SWITCH, WHL EXHAUST PRESSURE
T27	TRANSFORMER, ERV MAIN
T28	TRANSFORMER, STEP DOWN WHEEL
T59	AUTOTRANSFORMER, EXHAUST BLOWER
T60	AUTOTRANSFORMER, INTAKE WHEEL
TB85	TERMINAL BLOCK, POWER DISTRIBUTION
TB88	TERMINAL BLOCK, POWER DISTRIBUTION

NOTE: USE COPPER CONDUCTORS ONLY



⚠️ 1728 USED ON 480V OR 575V UNITS
 ⚠️ TB88 OR CB41 USED INSTEAD OF S184
 ⚠️ USED WITH S184 OR TB88
 ⚠️ SINGLE POINT POWER OUTPUT TO RTU; MULTIPPOINT POWER TO BUILDING
 ⚠️ T59 AND T60 USED ON 575V ONLY

480 OR 575 VOLT / 60Hz / 1 PH
 F34 T28
 L1 RED
 L2 RED
 L3 WHI
 K94-1
 K94-2

575 VOLT 60Hz/3 PH
 L1 L2 L3
 480V

EQUIPMENT GROUND
 N

ERV WIRING DIAGRAM
 537388-01
 ERV-INTERNAL
 EBA-040H - G, J, M, Y
 New Form No. 537388-01
 REV 0
 © 2012 Lennox Commercial