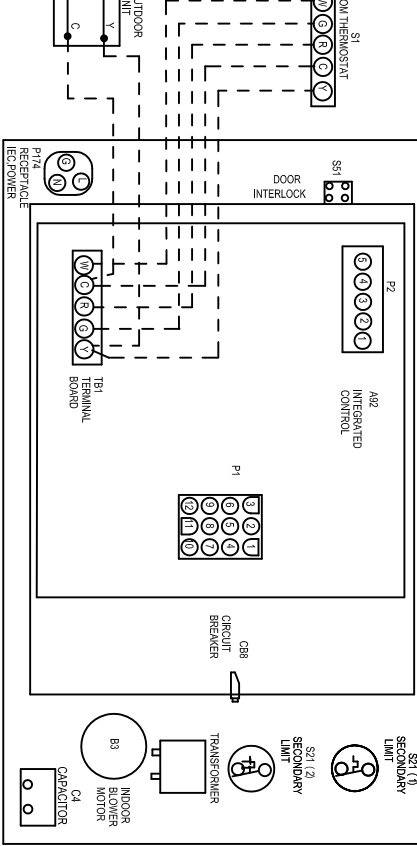


BLOWER SPEED CHART					
UNIT	COOL	HEAT	PARK1	PARK2	HIGHEST SPEEDS
007P36A	BLACK	BROWN	RED	RED	3
009P48B	BLACK	BROWN	YELLOW	RED	4
110P36C	BROWN	BLACK	YELLOW	RED	4
110P60C	BLACK	YELLOW	RED	RED	3
135P60D	BLACK	YELLOW	RED	RED	3

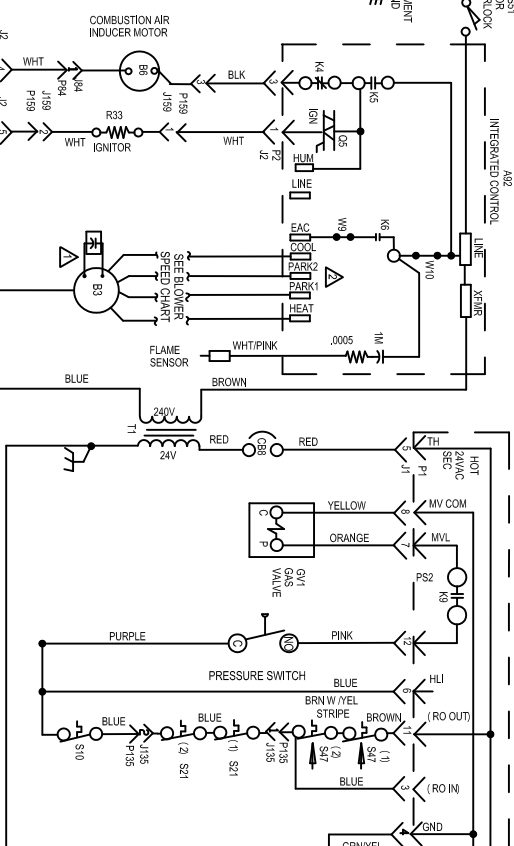
HI BLOWER SPEED SELECTION			
SPEED TAPS	BLACK	BROWN	YELLOW
LO	RED	RED	RED
3	BLACK	BROWN	YELLOW



NOTE: SEE INSTALLATION INSTRUCTIONS FOR PROPER WIRING OF THE BLOWER MOTOR. SPECIFIC COOLING TONNAGE BEING APPLIED, AND HEATING TEMPERATURE RISE DESIRED.

WIRE COLOR	FUNCTION
BLACK	J1B JAGCPLUG-EQUIP
BROWN	J1P1 JAGCPLUG-BURNER CONTROL
YELLOW	J1P2 JAGCPLUG-COMB. AIR INDUCER
RED	J1P35 JAGCPLUG-SECONDARY LIMIT
BLUE	J1P29 JAGCPLUG-INDUCER/IGNITOR

ROOM THERMOSTAT (S1) SETTINGS: ON, OFF, FAN, COOL, HEAT, COOL.

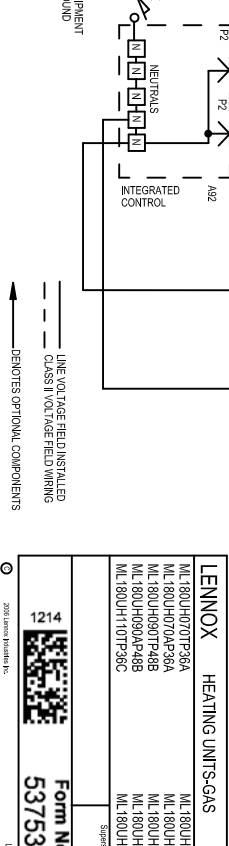


NOTE: IF ANY WIRE IN THIS APPLIANCE IS REPLACED IT MUST BE IDENTIFIED WITH THE ORIGINAL WIRE. RATING, INSULATION THICKNESS AND TERMINATION. IMPORTANT - TO PREVENT MOTOR BURNOUT NEVER CONNECT MORE THAN ONE MOTOR LEAD TO ANY ONE CONNECTION. UNUSED MOTOR LEADS MUST BE WIRED TO A PARK TERMINAL. USE COPPER CONDUCTORS ONLY.

WARNING: DO NOT USE RED (LOW SPEED) FOR HEATING. LEAVE ON PARK (MEDIUM/LOW SPEED) & RED (LOW SPEED) FOR HEATING. LEAVE ON PARK.

FIELD SUPPLIED ACC. WIRE.

WARNING: ELECTRICAL SHOCK HAZARD CAN CAUSE INJURY OR DEATH. ALWAYS DISCONNECT POWER TO THE APPLIANCE BEFORE WORKING ON IT. ALWAYS USE PROPER SAFETY PROCEDURES.



LENNOX HEATING UNITS-GAS

ML180UH107P36A	ML180UH100P36C
ML180UH070A P36A	ML180UH107P36C
ML180UH090T P48B	ML180UH100P60C
ML180UH090D P48B	ML180UH135P60D
ML180UH107P36C	ML180UH135A P60D

Supersedes: _____

Form No. 537536-01

1214

© 2018 Lennox Industries, Inc. 180U-USA-3