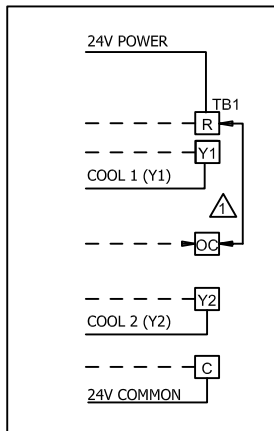


KEY	COMPONENT
A1	PANEL-LOGIC
A16	CONTROL-MICROPROCESSOR
A63	SENSOR-CO2
A75	SENSOR-ROOM
A183	CONTROL-VFD BOARD
H1	HEADER 1, VFD BOARD
J3	JACK-UNIT ECONOMIZER
J24	JACK-EXHAUST FAN
J39	JACK-CONTROL INTERFACE
J79	JACK-PIGTAIL
J80	JACK-HEADER
K65	RELAY-EXHAUST FAN
K92	RELAY-INTERLOCK
P3	PLUG-UNIT ECONOMIZER
P24	PLUG-EXHAUST FAN
P39	PLUG-CONTROL INTERFACE
P79	PLUG-HEADER
P80	PLUG-HEADER
R1	SENSOR-MIXED OR SUPPLY AIR
RT1	SENSOR-DISCHARGE AIR MONITOR
S52	SWITCH-AIRFLOW
TB1	TERMINAL STRIP-24V CLASS II
TB33	TERMINAL STRIP-1AQ SENSOR



CONNECTION SCHEME FOR KCA, KGA AND KHA 092 THROUGH 150 UNITS WITHOUT ECONOMIZER ONLY

- ⚠ REMOVE JUMPER BETWEEN TB1-R AND TB1-OCF WHEN USING A NITE SETBACK THERMOSTAT
- ⚠ REMOVE P3 WHEN ECONOMIZER IS USED, ONLY ON KCA, KGA AND KHA 180 THROUGH 300 UNITS.
- ⚠ J3 MAXIMUM LOAD 20VA 24VAC CLASS II
- ⚠ J3 AND P3 ARE NOT USED ON KCA, KGA AND KHA 092 THROUGH 150 UNITS WITHOUT ECONOMIZER

05/12		LANDMARK B-BOX WIRING DIAGRAM 537557-01	05/12
ACCESSORIES			
NOVAR ETM 2024 CONTROL			
SECTION C			REV 0
Supersedes		New Form No. 537557-01	