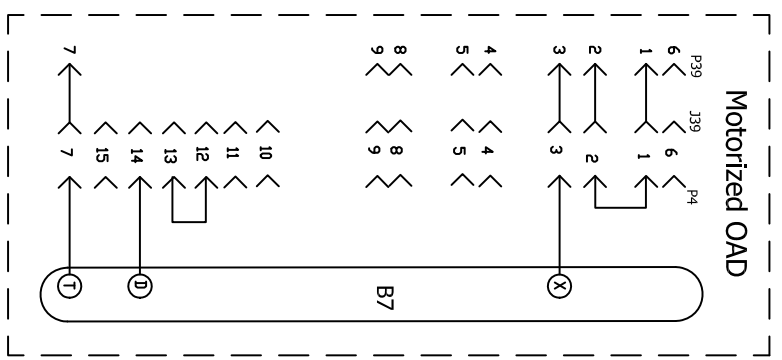


P VOLT	KV	HE1	HE2	HE3
048,060	5	5	5	5
	7.5	7.5	7.5	7.5
	10	10	10	10
	15	15	15	15
	22.5	22.5	22.5	22.5

G,J,M,Y	KV	HE1	HE2
048,060	5	5	5
	7.5	7.5	7.5
	10	10	10
	15	15	15
	22.5	22.5	22.5



NOTE - FOR USE WITH COPPER CONDUCTORS ONLY  
 REFER TO UNIT RATING PLATE FOR MINIMUM  
 CIRCUIT AMPACITY AND MAXIMUM OVERCURRENT  
 PROTECTION SIZE.

IMPORTANT: TO PREVENT MOTOR BURNOUT, NEVER  
 CONNECT MORE THAN ONE MOTOR LEAD TO ANY ONE  
 P-Y VOLT T1 WITH 208V TAP

▲ ELECTRIC HEAT FIELD OPTION  
 ▲ LOW AMBIENT KIT

▲ K1-A TO K1-FAN JUMPER ON G,J,M UNITS ONLY

▲ THERMOSTAT/SENSOR SUPPLIED BY USER

▲ REMOVE P3 WHEN ECONOMIZER OR QADM IS USED

▲ TIME CLOCK CONTACTS (OPT) CLOSED OCCUPIED

▲ AT ENTHALPY SENSOR MAY BE USED INSTEAD OF  
 S175 TEMPERATURE SWITCH AND RESISTOR

--- DESIGNATES OPTIONAL WIRING  
 --- CLASS II FIELD WIRING

01/13	WIRING DIAGRAM	01/13
537582-01		
UNIT DIAGRAM		
ZH - 036, 048, 060		
SECTION ALL		
Supersedes	New Form No.	REV. 0
	537582-01	