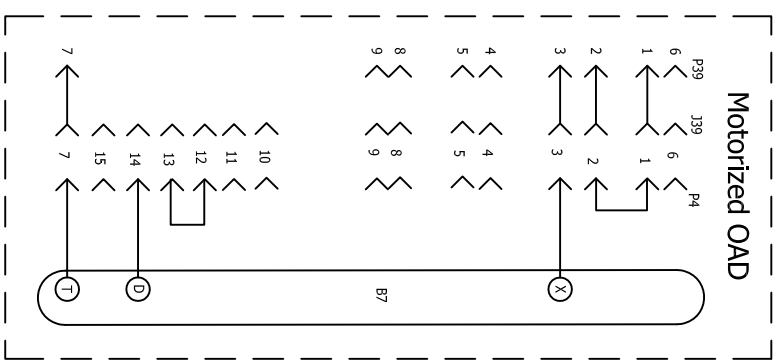
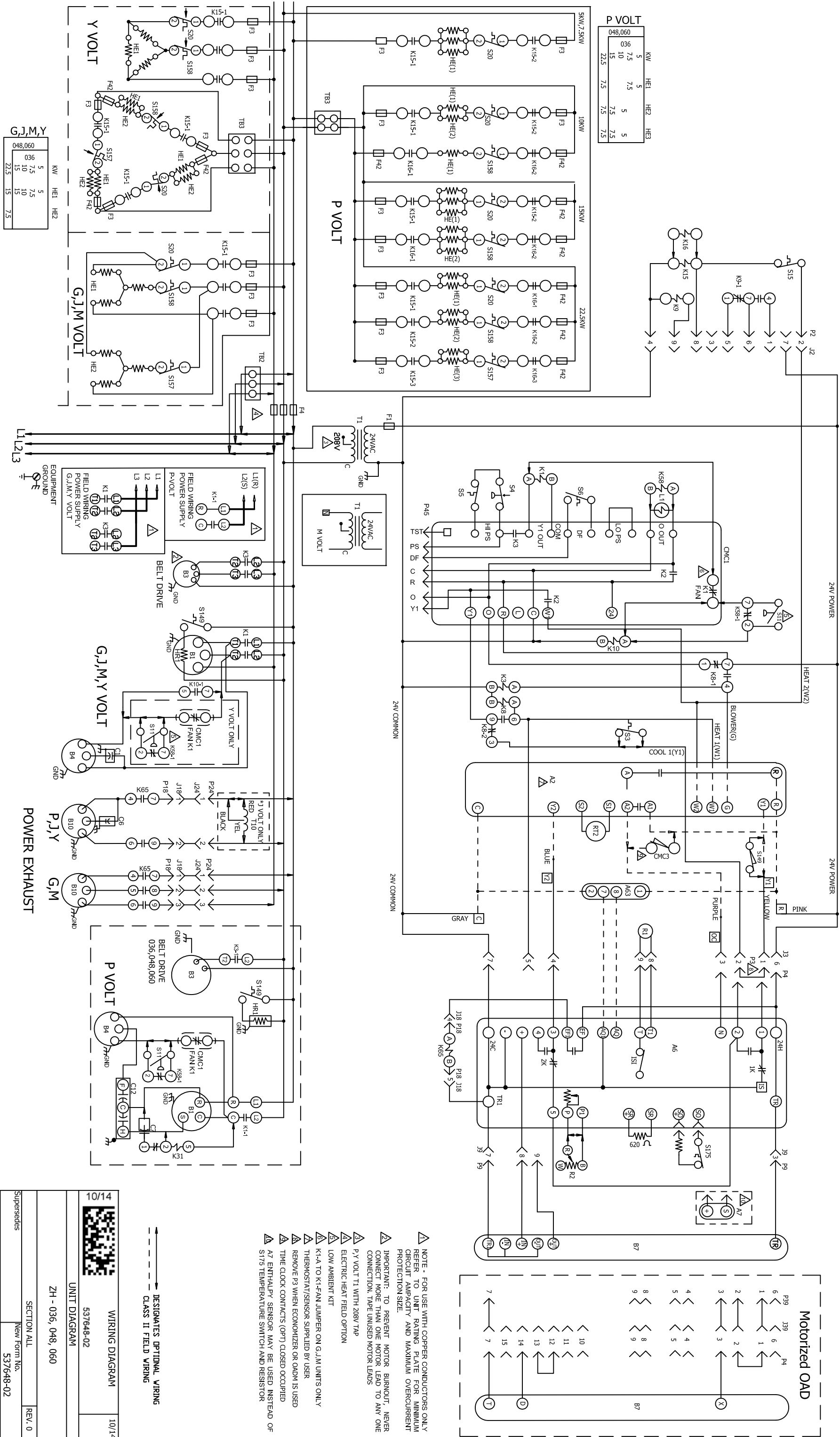


P VOLT

048,060	KW	HE1	HE2	HE3
96	5	5	5	5
10	7.5	7.5	7.5	7.5
15	10	10	10	10
22.5	15	15	15	15



10/14

WIRING DIAGRAM 10/14

537648-02

UNIT DIAGRAM

ZH - 036, 048, 060

SECTION ALL

New Form No. 537648-02

REV. 0

- ▲ NOTE - FOR USE WITH COPPER CONDUCTORS ONLY REFER TO UNIT RATING PLATE FOR MINIMUM CIRCUIT AMPACITY AND MAXIMUM OVERCURRENT PROTECTION SIZE.
- ▲ IMPORTANT: TO PREVENT MOTOR BURNOUT, NEVER CONNECT MORE THAN ONE MOTOR LEAD TO ANY ONE CONNECTION. TAPE UNUSED MOTOR LEADS
- ▲ P,Y VOLT T1 WITH 208V TAP
- ▲ ELECTRIC HEAT FIELD OPTION
- ▲ LOW AMBIENT KIT
- ▲ K1-A TO K1-FAN JUMPER ON G,J,M UNITS ONLY
- ▲ THERMOSTAT/SENSOR SUPPLIED BY USER
- ▲ REMOVE P3 WHEN ECONOMIZER OR OADM IS USED
- ▲ TIME CLOCK CONTACTS (OPT) CLOSED OCCUPIED
- ▲ A7 ENTHALPY SENSOR MAY BE USED INSTEAD OF S175 TEMPERATURE SWITCH AND RESISTOR

--- DESIGNATES OPTIONAL WIRING

--- CLASS II FIELD WIRING

G,J,M,Y

048,060	KW	HE1	HE2
96	5	5	5
10	7.5	7.5	7.5
15	10	10	10
22.5	15	15	15

