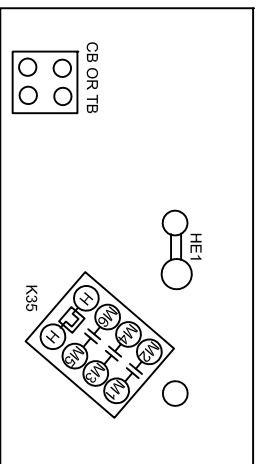
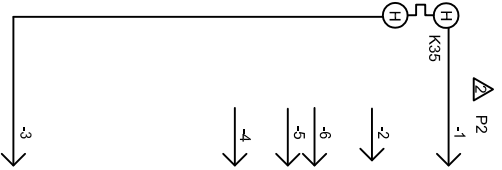


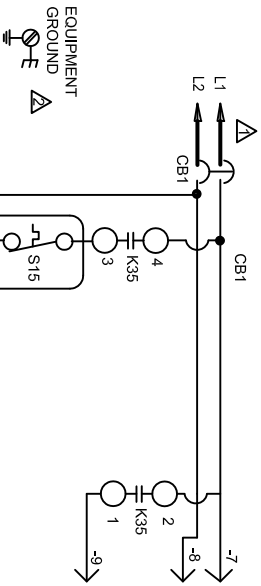
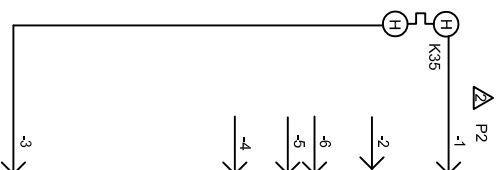
KEY	COMPONENT	DESCRIPTION
CB1	CIRCUIT BREAKER-ELECT HEAT	
HE1	ELEMENT-ELECTRIC HEAT 1	
K32-1/2	RELAY-ELECTRIC HEAT	
P2	PLUG-ELECTRIC HEAT	
S15	SWITCH-LIMIT PRIMARY ELECT HEAT	
S20	SWITCH-LIMIT SECONDARY ELECT HEAT	

- NOTE: USE COPPER CONDUCTORS ONLY
- REFER TO UNIT NAMEPLATE FOR MINIMUM CIRCUIT AMPACITY AND MAXIMUM OVERCURRENT PROTECTION SIZE.
- EQUIPMENT GROUND IS LOCATED IN INDOOR UNIT



KEY	COMPONENT	DESCRIPTION
CB1	CIRCUIT BREAKER-ELECT HEAT	
HE1	ELEMENT-ELECTRIC HEAT 1	
K32-1/2	RELAY-ELECTRIC HEAT	
P2	PLUG-ELECTRIC HEAT	
S15	SWITCH-LIMIT PRIMARY ELECT HEAT	
S20	SWITCH-LIMIT SECONDARY ELECT HEAT	

- NOTE: USE COPPER CONDUCTORS ONLY
- REFER TO UNIT NAMEPLATE FOR MINIMUM CIRCUIT AMPACITY AND MAXIMUM OVERCURRENT PROTECTION SIZE.
- EQUIPMENT GROUND IS LOCATED IN INDOOR UNIT



LINE VOLTAGE FIELD INSTALLED

HEATING-ELECTRIC

AEHK05CB-1

Supersedes

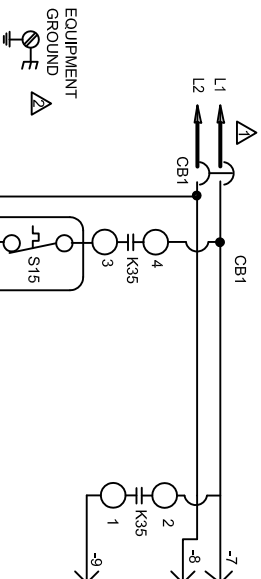
1114



Form No.
537801-01

© 2011

Litho U.S.A.



LINE VOLTAGE FIELD INSTALLED

HEATING-ELECTRIC

AEHK05CB-1

Supersedes

1114



Form No.
537801-01

© 2011

Litho U.S.A.