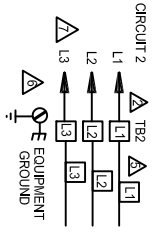
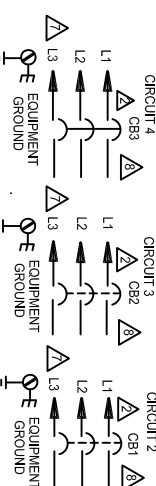


FIELD WIRING FOR UNITS WITHOUT CIRCUIT BREAKERS

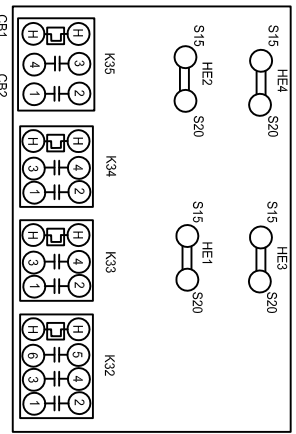


FIELD WIRING FOR UNITS WITH CIRCUIT BREAKERS



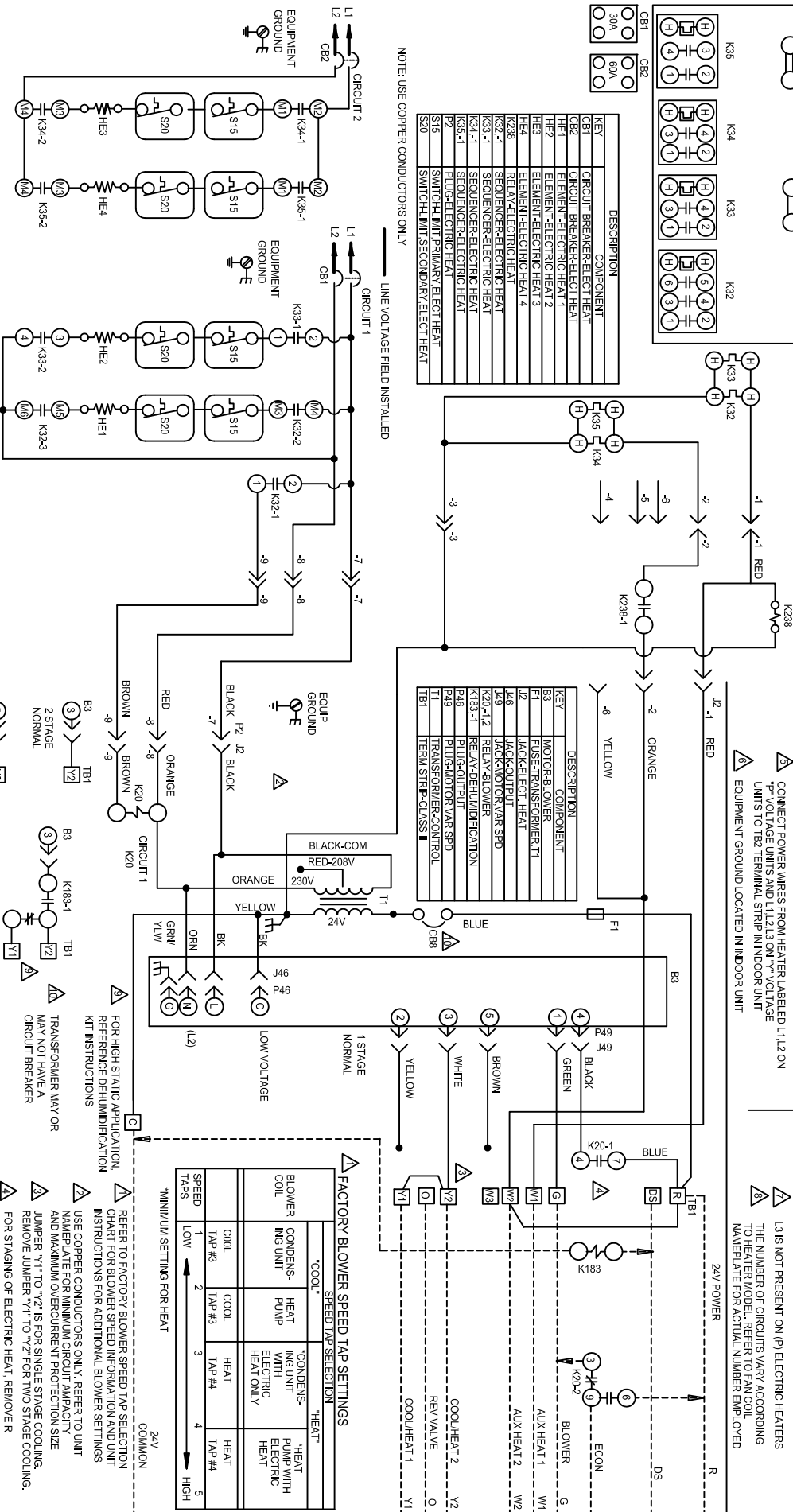
CONNECT POWER WIRES FROM HEATER LABELED L1, L2 ON "P" VOLTAGE UNITS AND L1, L2, L3 ON "V" VOLTAGE UNITS TO TB2 TERMINAL STRIP IN INDOOR UNIT
EQUIPMENT GROUND LOCATED IN INDOOR UNIT

L1S NOT PRESENT ON (P) ELECTRIC HEATERS
THE NUMBER OF CIRCUITS VARY ACCORDING TO HEATER MODEL. REFER TO FAN COIL NAMEPLATE FOR ACTUAL NUMBER EMPLOYED



| KEY | DESCRIPTION | COMPONENT |
|-------|-----------------------------------|-----------|
| CB1 | CIRCUIT BREAKER-ELECT HEAT | |
| CB2 | CIRCUIT BREAKER-ELECT HEAT | |
| HE1 | ELEMENT-ELECTRIC HEAT 1 | |
| HE2 | ELEMENT-ELECTRIC HEAT 2 | |
| HE3 | ELEMENT-ELECTRIC HEAT 3 | |
| HE4 | ELEMENT-ELECTRIC HEAT 4 | |
| K238 | RELAY-ELECTRIC HEAT | |
| K32-1 | SEQUENCER-ELECTRIC HEAT | |
| K33-1 | SEQUENCER-ELECTRIC HEAT | |
| K34-1 | SEQUENCER-ELECTRIC HEAT | |
| K35-1 | SEQUENCER-ELECTRIC HEAT | |
| P2 | PLUG-ELECTRIC HEAT | |
| S15 | SWITCH/LIMIT PRIMARY ELECT HEAT | |
| S20 | SWITCH/LIMIT SECONDARY ELECT HEAT | |

| KEY | DESCRIPTION | COMPONENT |
|---------|------------------------|-----------|
| B3 | MOTOR-BLOWER | |
| F1 | FUSE-TRANSFORMER T1 | |
| J2 | JACK-ELECT. HEAT | |
| J46 | JACK-OUTPUT | |
| J49 | JACK-MOTOR VAR SPD | |
| K20-1,2 | RELAY-DEHUMIDIFICATION | |
| K183-1 | RELAY-DEHUMIDIFICATION | |
| P46 | PLUG-OUTPUT | |
| P49 | PLUG-MOTOR VAR SPD | |
| T1 | TRANSFORMER-CONTROL | |
| TB1 | TERM. STRIP-CLASS II | |



NOTE: USE COPPER CONDUCTORS ONLY
LINE VOLTAGE FIELD INSTALLED

FACTORY BLOWER SPEED TAP SETTINGS

| SPEED TAPS | "COOL" BLOWER | | "CONDENSING" BLOWER | | "HEAT" BLOWER | |
|------------|---------------|--------|---------------------|--------|---------------|--------|
| | TAP #3 | TAP #4 | TAP #3 | TAP #4 | TAP #4 | TAP #4 |
| LOW | 1 | 2 | 1 | 2 | 3 | 4 |
| HIGH | 2 | 3 | 3 | 4 | 4 | 5 |

MINIMUM SETTING FOR HEAT
COMMON

REFER TO FACTORY BLOWER SPEED TAP SELECTION CHART FOR BLOWER SPEED IN OPERATION UNIT INSTRUCTIONS FOR ADDITIONAL BLOWER SETTINGS
USE COPPER CONDUCTORS ONLY. REFER TO UNIT NAMEPLATE FOR MINIMUM CIRCUIT AMPACITY AND MAXIMUM OVERCURRENT PROTECTION SIZE
JUMPER "Y1" TO "Y2" IS FOR SINGLE STAGE COOLING. REMOVE JUMPER "Y1" TO "Y2" FOR TWO STAGE COOLING.
FOR STAGING OF ELECTRIC HEAT, REMOVER TO W2 JUMPER

LENNOX COILS-BLOWER COIL UNITS
CB27UH,CBX27UH-018 THRU 060 UNITS
WITH ECB29-20CB-8P
COIL SECTION-1B46
Supersedes

Form No. 537820-01
2011

Cut size: 8-1/4" X 10-1/4"