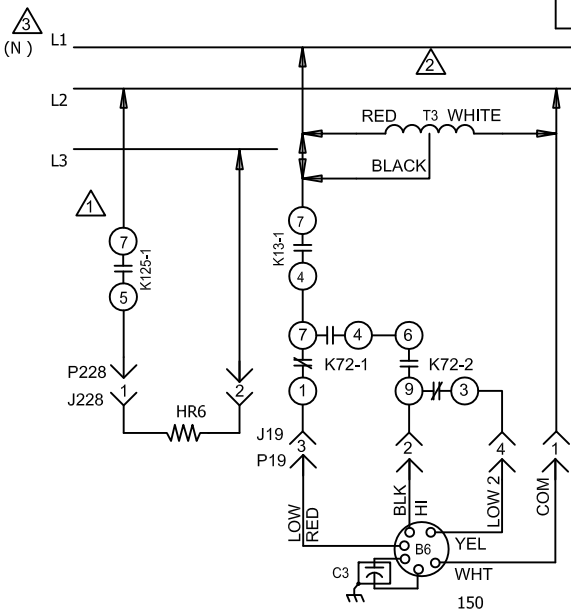
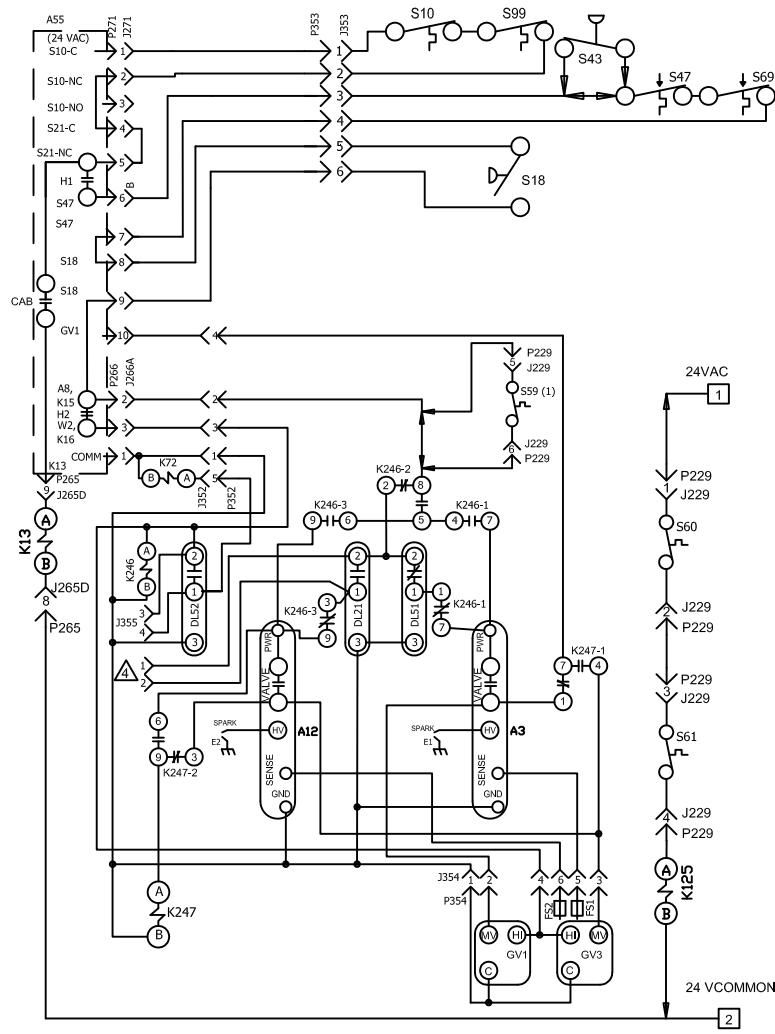


KEY	DESCRIPTION
A3	CONTROL, BURNER 1
A12	CONTROL, BURNER 2
A55	CONTROL, MAIN BOARD LENNOX
B6	MOTOR, COMBUSTION AIR BLOWER
C3	CAPACITOR, COMB AIR BLOWER 1
DL21	DELAY, GAS, STAGE 2
DL51	DELAY, 1ST STAGE GAS HEAT
DL52	DELAY, 4TH STAGE GAS HEAT
E1	SPARK
E2	SPARK
FS1	SENSOR, FLAME
FS2	SENSOR, FLAME
GV1	VALVE, GAS 1
GV3	VALVE, GAS 2
HR6	HEATER, -50C LOW AMBIENT KIT
K13,-1	RELAY, COMBUSTION AIR BLOWER
K72,-1,2	RELAY, GAS 3
K77,-1,2,3	RELAY, HEAT 1
K98,-1	RELAY, HEAT 2
K125,-1	RELAY, HEAT SHUT OFF
K246-1,2,3	RELAY - 1 ST, 2 ND STAGE
K247-1,2	RELAY - 4 TH STAGE
S10	SWITCH, LIMIT PRIMARY GAS
S18	SWITCH, COMBUSTION AIR PROVE 1
S43	SWITCH, LOW GAS PRESSURE
S47	SWITCH FLAME ROLLOUT BURNER
S59	TSTAT, OPEN -20F, CLOSE 10F
S60	TSTAT, OPEN 20F, CLOSE -10F
S61	TSTAT, OPEN 50F, CLOSE 20F
S69	SWITCH FLAME ROLLOUT BURNER 2
S99	SWITCH, LIMIT PRIMARY GAS 2
T3	TRANSFORMER COMB AIR BWR 1



J/P	DESCRIPTION
19	COMBUSTION AIR BLOWER
228	VESTIBULE HEATER
229	VESTIBULE HEATER CONTROL 1
265D	CONTACTOR RELAY
266A	HEATING CONTROL STG 1
271A,B	HEATING SENSORS STG 1
352	GAS VALVE CONTROL INPUTS
353	MODULATING GAS SAFETY SWITCHES
354	GAS VALVE CONTROL OUTPUTS
355	GAS VALVE CONTROL TEST

- ⚠ CSA (-50C) LOW AMBIENT KIT (OPTIONAL)
- ⚠ T3 USED ON 460V AND 575 V UNITS ONLY
- ⚠ CONNECT TO (N) ON 380/420V UNITS ONLY
- ⚠ FOR USE DURING RUN-TEST ONLY
- ← DENOTES OPTIONAL COMPONENTS

01/16		WIRING DIAGRAM	01/16
		537837-01	
HEATING			
4-STAGE GAS HEAT, LGH 150			
SECTION A			REV. 1
Supersedes		New Form No. 537837-01	