

BLOWER SPEED CHART

UNIT	COOL	HEAT	FAN	PARK
0398/E05	BLACK	BLUE	RED	BROWN/YELLOW
0398/E12	BLACK	YELLOW	RED	BROWN/BLUE
0708/E12	BLACK	BLUE	RED	BROWN/YELLOW
0900/E18	BLACK	BROWN	RED	BLUE/YELLOW
1100/E20	BROWN	BLUE	RED	BLACK/YELLOW
1350/E20	BROWN	BLUE	RED	BLACK/YELLOW

HI → BLOWER SPEED SELECTION ← LO

NOTE: WIRE IN THIS APPLANCE IS REPAIRED IT MUST BE REPLACED WITH WIRE OF LINE SIZE, RATING, INSULATION THICKNESS AND TERMINATION.

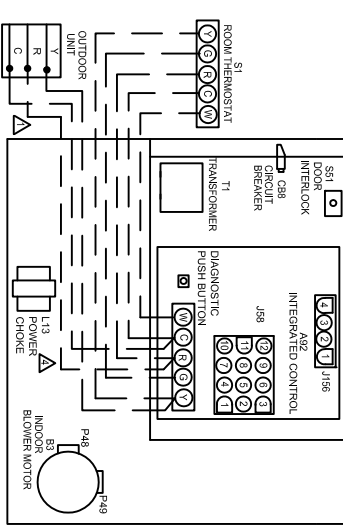
FR REQUIRED ON SOME OUTDOOR UNITS

PARK TERMINALS ARE UNWIPERED TERMINALS, ALL WIRE LEADS MUST BE WIPED TO A PARK TERMINAL.

DO NOT USE RED/LOW SPEED MOTOR LEAD FOR HEATING SPEED ON 049X/E36A, 0700X/E38B, 1100X/E60C AND 1350/E20 UNITS, RESULTING TEMPERATURE RISE WILL BE OUTSIDE OF RISE RANGE.

L13 POWER CHOKE USED ON 1 AND 1 HP ONLY.

S145 IS USED WITH HONEYWELL GAS VALVE WHEN APPLIED IN LP GAS UNITS USE COPPER CONDUCTORS ONLY.



WIRE COLOR IDENTIFICATION CHART

J1242	JACK POT	INDOOR FAN-POWER
J1248	JACK POT	INDOOR BLOWER-SPD TAB
J1252	JACK POT	INDOOR BLOWER-CONTROL
J1256	JACK POT	INDOOR BLOWER-CONTROL
J1258	JACK POT	INDOOR BLOWER-CONTROL
J1262	JACK POT	INDOOR BLOWER-CONTROL
J1264	JACK POT	INDOOR BLOWER-CONTROL
J1266	JACK POT	INDOOR BLOWER-CONTROL
J1268	JACK POT	INDOOR BLOWER-CONTROL
J1270	JACK POT	INDOOR BLOWER-CONTROL
J1272	JACK POT	INDOOR BLOWER-CONTROL
J1274	JACK POT	INDOOR BLOWER-CONTROL
J1276	JACK POT	INDOOR BLOWER-CONTROL
J1278	JACK POT	INDOOR BLOWER-CONTROL
J1280	JACK POT	INDOOR BLOWER-CONTROL

NOTE: WIRE IN THIS APPLANCE IS REPAIRED IT MUST BE REPLACED WITH WIRE OF LINE SIZE, RATING, INSULATION THICKNESS AND TERMINATION.

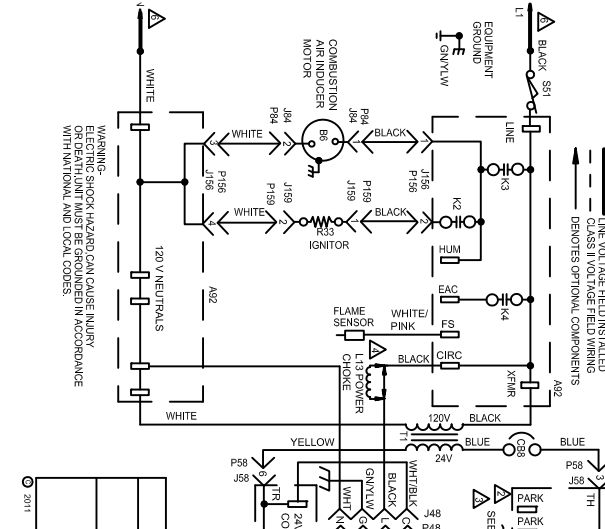
FR REQUIRED ON SOME OUTDOOR UNITS

PARK TERMINALS ARE UNWIPERED TERMINALS, ALL WIRE LEADS MUST BE WIPED TO A PARK TERMINAL.

DO NOT USE RED/LOW SPEED MOTOR LEAD FOR HEATING SPEED ON 049X/E36A, 0700X/E38B, 1100X/E60C AND 1350/E20 UNITS, RESULTING TEMPERATURE RISE WILL BE OUTSIDE OF RISE RANGE.

L13 POWER CHOKE USED ON 1 AND 1 HP ONLY.

S145 IS USED WITH HONEYWELL GAS VALVE WHEN APPLIED IN LP GAS UNITS USE COPPER CONDUCTORS ONLY.



HEATING UNITS-GAS

Form No. 537841-01

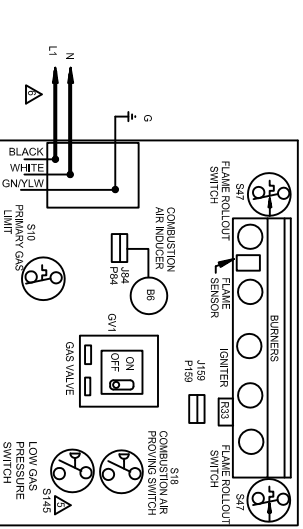
Supersedes

0116

2011

LINE VOLTAGE FIELD INSTALLED CLASS II VOLTAGE FIELD WIRING DEMOTES OPTIONAL COMPONENTS

WARNING: ELECTRIC SHOCK HAZARD CAN CAUSE INJURY OR DEATH. UNIT MUST BE REPAIRED IN ACCORDANCE WITH NATIONAL AND LOCAL CODES.



BLOWER SPEED CHART

UNIT	COOL	HEAT	FAN	PARK
0398/E05	BLACK	BLUE	RED	BROWN/YELLOW
0398/E12	BLACK	YELLOW	RED	BROWN/BLUE
0708/E12	BLACK	BLUE	RED	BROWN/YELLOW
0900/E18	BLACK	BROWN	RED	BLUE/YELLOW
1100/E20	BROWN	BLUE	RED	BLACK/YELLOW
1350/E20	BROWN	BLUE	RED	BLACK/YELLOW

HI → BLOWER SPEED SELECTION ← LO

NOTE: WIRE IN THIS APPLANCE IS REPAIRED IT MUST BE REPLACED WITH WIRE OF LINE SIZE, RATING, INSULATION THICKNESS AND TERMINATION.

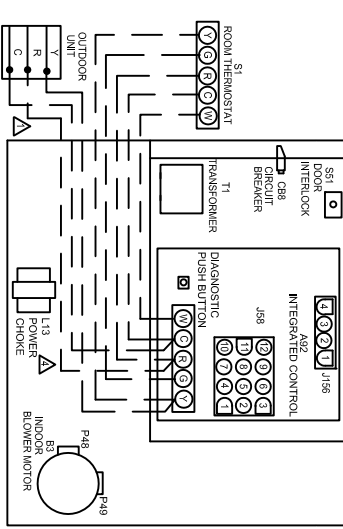
FR REQUIRED ON SOME OUTDOOR UNITS

PARK TERMINALS ARE UNWIPERED TERMINALS, ALL WIRE LEADS MUST BE WIPED TO A PARK TERMINAL.

DO NOT USE RED/LOW SPEED MOTOR LEAD FOR HEATING SPEED ON 049X/E36A, 0700X/E38B, 1100X/E60C AND 1350/E20 UNITS, RESULTING TEMPERATURE RISE WILL BE OUTSIDE OF RISE RANGE.

L13 POWER CHOKE USED ON 1 AND 1 HP ONLY.

S145 IS USED WITH HONEYWELL GAS VALVE WHEN APPLIED IN LP GAS UNITS USE COPPER CONDUCTORS ONLY.



WIRE COLOR IDENTIFICATION CHART

J1242	JACK POT	INDOOR FAN-POWER
J1248	JACK POT	INDOOR BLOWER-SPD TAB
J1252	JACK POT	INDOOR BLOWER-CONTROL
J1256	JACK POT	INDOOR BLOWER-CONTROL
J1258	JACK POT	INDOOR BLOWER-CONTROL
J1262	JACK POT	INDOOR BLOWER-CONTROL
J1264	JACK POT	INDOOR BLOWER-CONTROL
J1266	JACK POT	INDOOR BLOWER-CONTROL
J1268	JACK POT	INDOOR BLOWER-CONTROL
J1270	JACK POT	INDOOR BLOWER-CONTROL
J1272	JACK POT	INDOOR BLOWER-CONTROL
J1274	JACK POT	INDOOR BLOWER-CONTROL
J1276	JACK POT	INDOOR BLOWER-CONTROL
J1278	JACK POT	INDOOR BLOWER-CONTROL
J1280	JACK POT	INDOOR BLOWER-CONTROL

NOTE: WIRE IN THIS APPLANCE IS REPAIRED IT MUST BE REPLACED WITH WIRE OF LINE SIZE, RATING, INSULATION THICKNESS AND TERMINATION.

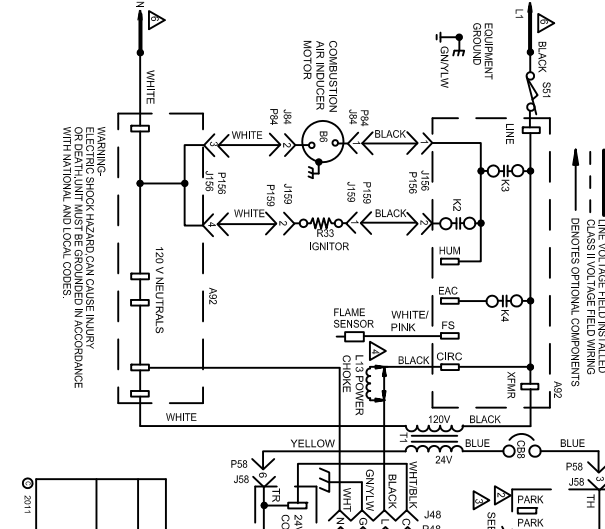
FR REQUIRED ON SOME OUTDOOR UNITS

PARK TERMINALS ARE UNWIPERED TERMINALS, ALL WIRE LEADS MUST BE WIPED TO A PARK TERMINAL.

DO NOT USE RED/LOW SPEED MOTOR LEAD FOR HEATING SPEED ON 049X/E36A, 0700X/E38B, 1100X/E60C AND 1350/E20 UNITS, RESULTING TEMPERATURE RISE WILL BE OUTSIDE OF RISE RANGE.

L13 POWER CHOKE USED ON 1 AND 1 HP ONLY.

S145 IS USED WITH HONEYWELL GAS VALVE WHEN APPLIED IN LP GAS UNITS USE COPPER CONDUCTORS ONLY.



HEATING UNITS-GAS

Form No. 537841-01

Supersedes

0116

2011

LINE VOLTAGE FIELD INSTALLED CLASS II VOLTAGE FIELD WIRING DEMOTES OPTIONAL COMPONENTS

WARNING: ELECTRIC SHOCK HAZARD CAN CAUSE INJURY OR DEATH. UNIT MUST BE REPAIRED IN ACCORDANCE WITH NATIONAL AND LOCAL CODES.