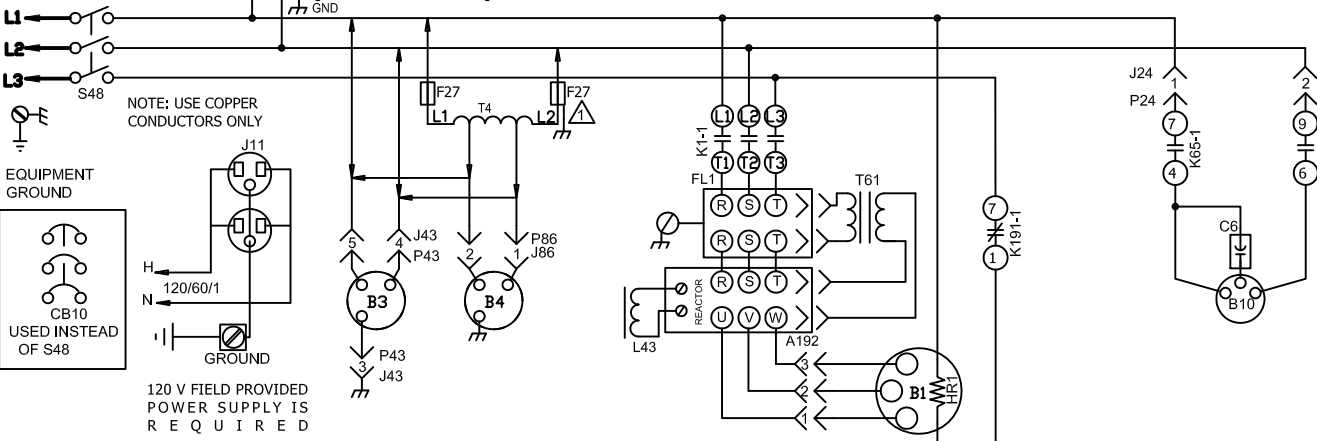


KEY	COMPONENT
A55	CONTROL, MAIN PANEL LENNOX
A192	INVERTER, VAR SPEED COMPRESSOR
B1	COMPRESSOR 1
B3	MOTOR, BLOWER
B4	MOTOR, OUTDOOR FAN
B10	MOTOR, EXHAUST FAN
C6	CAPACITOR, EXHAUST FAN
CB8	CIRCUIT, BREAKER
CB10	CIRCUIT BREAKER, MAIN DISCONNECT UNIT
CB31	CIRCUIT BREAKER, TRANSFORMER T43
F27	FUSE, T4 TRANSFORMER PRIMARY
FL1	FILTER BOARD
HR1	HEATER, COMPRESSOR
J11	JACK, GFI RECEPTACLE
K1,-1	CONTACTOR, COMPRESSOR
K65-1,2	RELAY, EXHAUST FAN
K191	RELAY, CRANKCASE HEATER
L43	REACTOR, INVERTER
RT17	SENSOR, OUTDOOR AIR
S4	SWITCH, LIMIT HI PRESS
S5	SWITCH, LIMIT HI TEMP COMPRESSOR 1
S11	SWITCH, LOW PRESS, LOW AMBIENT KIT
S48	SWITCH, DISCONNECT
S49	SWITCH, FREEZESTAT
S87	SWITCH, LOW PRESS, COMPRESSOR 1
T1	TRANSFORMER, CONTROL
T4	TRANSFORMER, BLOWER MOTOR
T61	TRANSFORMER, INV INTERNAL POWER



- T4 AND F27 USED ONLY ON G VOLTAGE UNITS
- MOVE WIRE FROM 240 TO 208 TAP ON T1 TRANSFORMER FOR 208 LINE VOLTAGE APPLICATIONS
- S49 IS PART OF A 5VDC CIRCUIT

J/P #	JACK/PLUG DESCRIPTION
3	ECONOMIZER BYPASS
18	EXHAUST FAN
24	EXHAUST FAN
43	BLOWER MOTOR
49	MOTOR VARIABLE SPEED
259	ECM MOTORS
263	HIGH AND LOW PRESSURE SWITCHES
264	BLOWER DECK
265	CONTACTORS AND RELAYS
267	OUTDOOR FAN AREA
268	TRANSFORMER 1 POWER
269	REHEAT
358	MODBUS

NOTE - IF ANY WIRE IN THIS APPLIANCE IS REPLACED IT MUST BE REPLACED WITH WIRE OF LIKE SIZE, RATING, TERMINATION AND INSULATION THICKNESS

WARNING - ELECTRIC SHOCK HAZARD, CAN CAUSE INJURY OR DEATH. UNIT MUST BE GROUNDED IN ACCORDANCE WITH NATIONAL AND LOCAL CODES

DISCONNECT ALL POWER BEFORE SERVICING.

← DENOTES OPTIONAL COMPONENTS
 — LINE VOLTAGE FIELD INSTALLED

12/15		WIRING DIAGRAM 537842-01	12/15
COOLING ULTRA HIGH EFFICIENCY LCH/LGH - 036U,048U,060U,074U - Y,G			
SECTION B		REV 0	
Supersedes		Form No. 537842-01	