

ACC-13-05, September 17, 2013
 Revised September 24, 2014

New Dehumidification and Humidification Modes (iComfort Wi-Fi® Software Version 2.1 and Higher)

AFFECTED PRODUCT

iComfort Wi-Fi® (software version 2.1 and higher)

ISSUE

With the implementation of the iComfort Wi-Fi® software revision 2.1 (and higher), the parameter label that was displayed on the thermostat screen and the operating characteristics associated with the dehumidification and humidification modes have changed. The purpose of this bulletin is to provide information concerning these changes.

In addition to the flow charts in this document here are other things to consider if having a dehumidification issue:

- Check the ARI S/T ratio ratings on the system installed. Ratings can be found at DAVENET.COM.
- Check for high humid outdoor air being introduced to the home.
- Check for air leaks in the duct system (attic or crawlspace air being drawn in to home).
- Check for indoor blower running when there is no call for cooling or after the cooling call has been satisfied.

TABLE OF CONTENTS

DEHUMIDIFICATION

1. Dehumidification Modes — without Zoning (iComfort Wi-Fi® Software Version 2.02) — Communicating (XC17, XP17, XP17N, XC21, XP21 and XP21N)	2
2. Dehumidification Modes — without Zoning (iComfort Wi-Fi® Software Version 2.1 and Later) — Communicating (XC17, XP17, XP17N, XC21, XP21 and XP21N)	2
3. Dehumidification Modes — without Zoning (iComfort Wi-Fi® Software Version 2.1 and Later) — Communicating (XC25 and XP25)	4
4. Dehumidification Modes — without Zoning (iComfort® Wi-Fi® Software Version 2.1 and Later) — Non-Communicating	4
5. Dehumidification Modes — with Zoning (iComfort Wi-Fi® Software Version 2.1 and Later) — Communicating	6
6. Indoor Air Volume Relationship with Climate IQ™ (iComfort® Wi-Fi® Software Version 2.1 and Later) — Communicating (XC25 and XP25)	7
7. Humiditrol® Mode Selected — Climate IQ™ (with Zoning) — XC25 / XP25	7
8. Humiditrol® Mode Selected — Climate IQ™ (without Zoning) — XC25 / XP25	8

HUMIDIFICATION

1. Humidification Modes — without Zoning (iComfort Wi-Fi® Software Version 2.1 and Later)	9
2. Humidification Modes — with Zoning (iComfort Wi-Fi® Software Version 2.1 and 2.11)	9
3. Humidification Modes — with Zoning (iComfort Wi-Fi® Software Version 2.12)	10
4. Humidification Modes - with Zoning (iComfort Wi-Fi® Software Version 2.13) — Communicating (XC17, XP17, XP17N, XC21, XP21, XP21N, XC25 and XP25)	10

DEHUMIDIFICATION

1. Dehumidification Modes — without Zoning (iComfort Wi-Fi® Software Version 2.02) — Communicating (XC17, XP17, XP17N, XC21, XP21 and XP21N)

TABLE 1

Lennox Communicating Outdoor Units — iComfort Wi-Fi® Software Version 2.02 (XC17, XP17, XP17N , XC21, XP21 and XP21N)	
Original Parameter Label	Resulting Operation
Off	Off
Basic	Compressor in high speed with blower in low with call for AC
Precision	Compressor in high speed with blower in low speed with no call for AC but with dehumidification call.

2. Dehumidification Modes — without Zoning (iComfort Wi-Fi® Software 2.1 and Later) — Communicating (XC17, XP17, XP17N, XC21, XP21 and XP21N)

TABLE 2

Lennox Communicating Outdoor Units — iComfort Wi-Fi® Software Version 2.1 and Later (XC17, XP17, XP17N , XC21, XP21 and XP21N)	
New Parameter Label	Resulting Operation
Dry	Off
Moderate	Compressor in high speed with blower in low with call for AC
Humid	Compressor in high speed with blower in low speed with no call for AC but with dehumidification call.

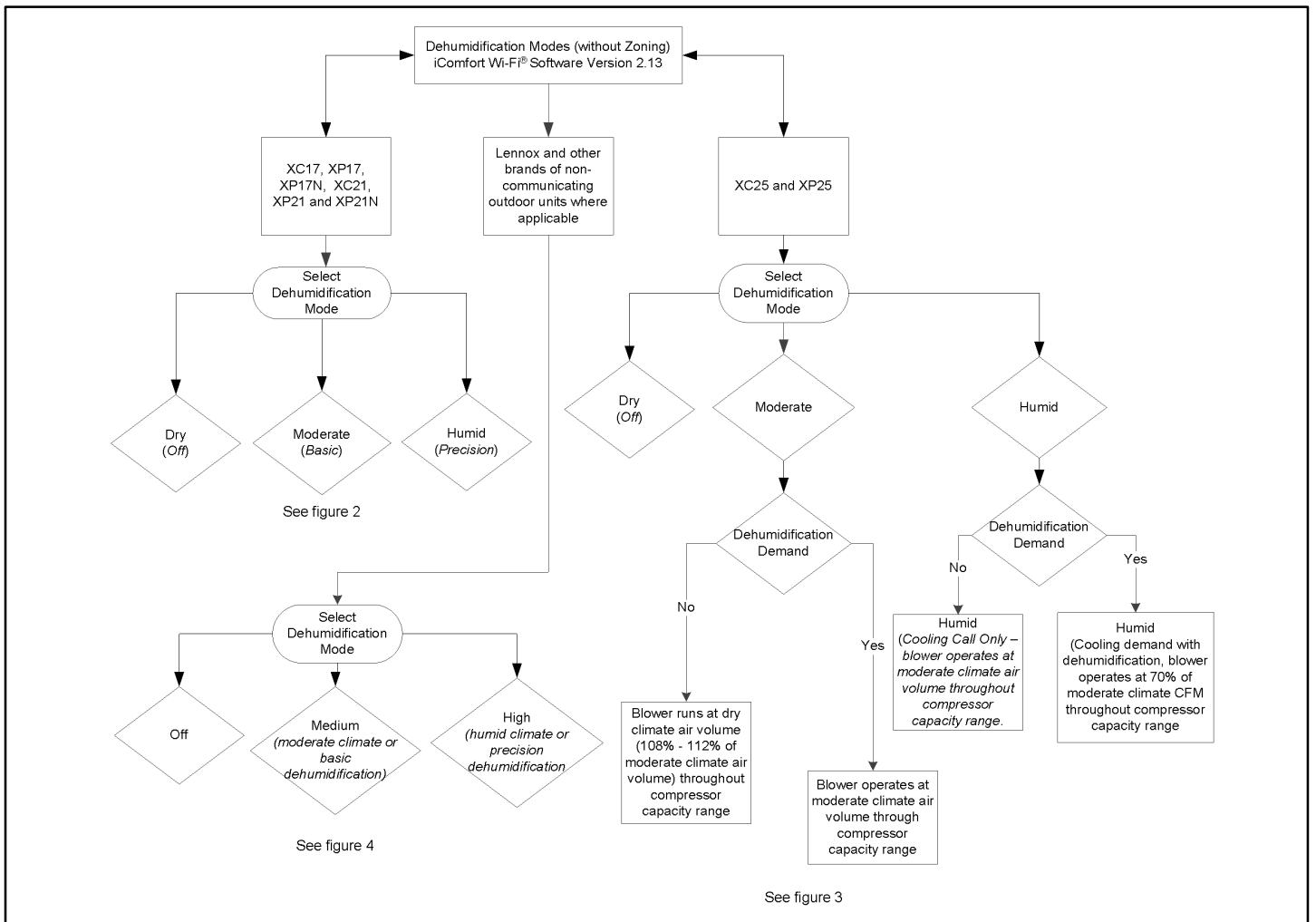


FIGURE 1. DEHUMIDIFICATION MODES WITHOUT ZONING

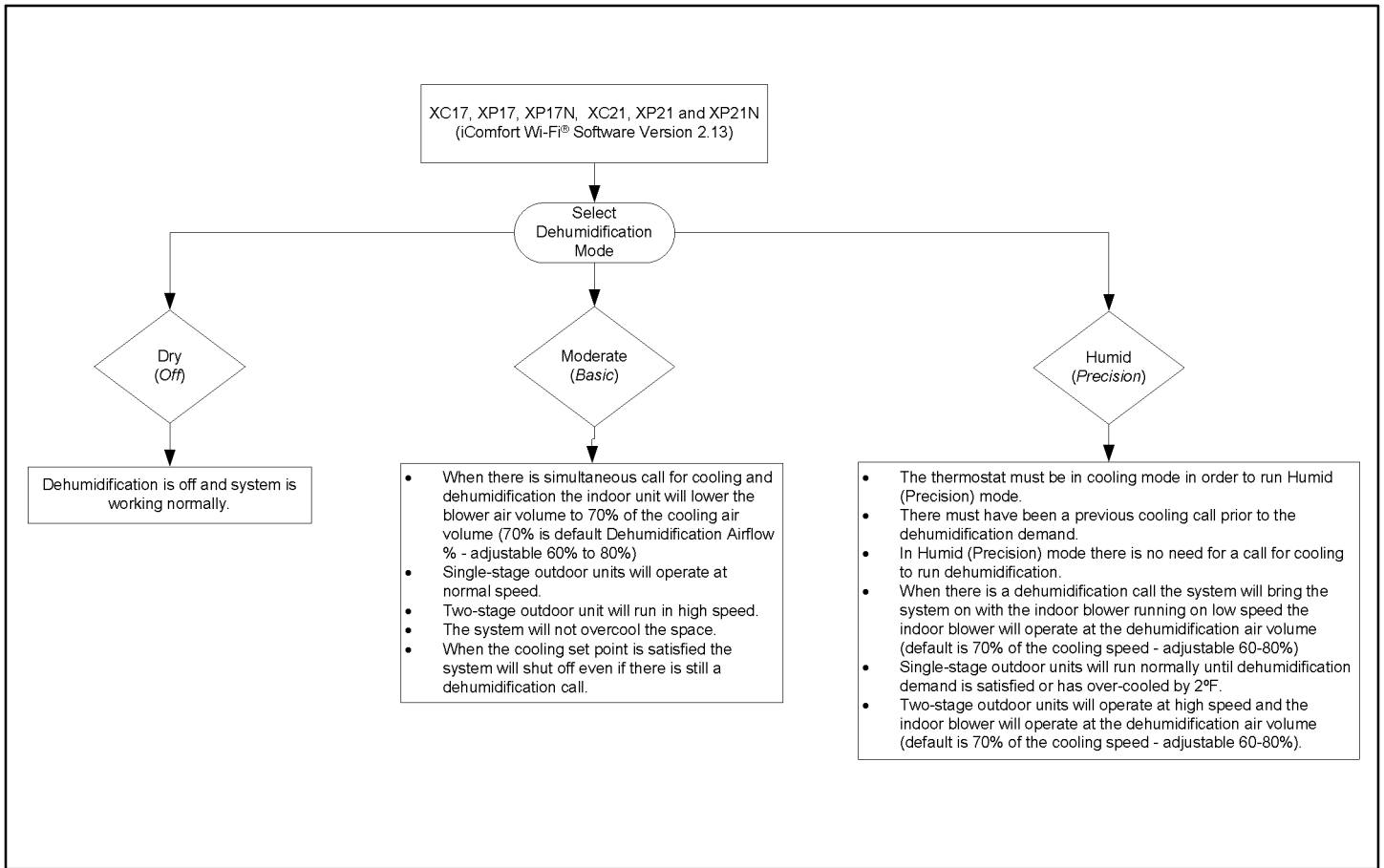


FIGURE 2. XC17, XP17, XP17N, XC21, XP21 AND XP21N DEHUMIDIFICATION MODES WITHOUT ZONING

3. Dehumidification Modes — without Zoning (iComfort Wi-Fi® Software 2.1 and later) — Communicating (XC25 and XP25)

TABLE 3

Lennox Communicating Outdoor Units — iComfort Wi-Fi® Software Version 2.1 and later (XC25 and XP25)	
Parameter Label	Resulting Operation
Dry	<ul style="list-style-type: none"> Higher blower speed all cooling calls. Higher blower CFM at all cooling calls and capacities (108 - 112% of moderate air volume). Compressor operation runs at demand BTU and does not increase to 100%.
Moderate	Moderate climate air volume (see table 6). High Normal Cooling Airflow Settings.
Humid = moderate climate indoor air volume	Cooling call only.
Humid = 70% of moderate climate air volume	Cooling calls with dehumidification.

See expanded performance rating available on DAVENET.COM under Partner Resources/Sales Tools/ACCA).

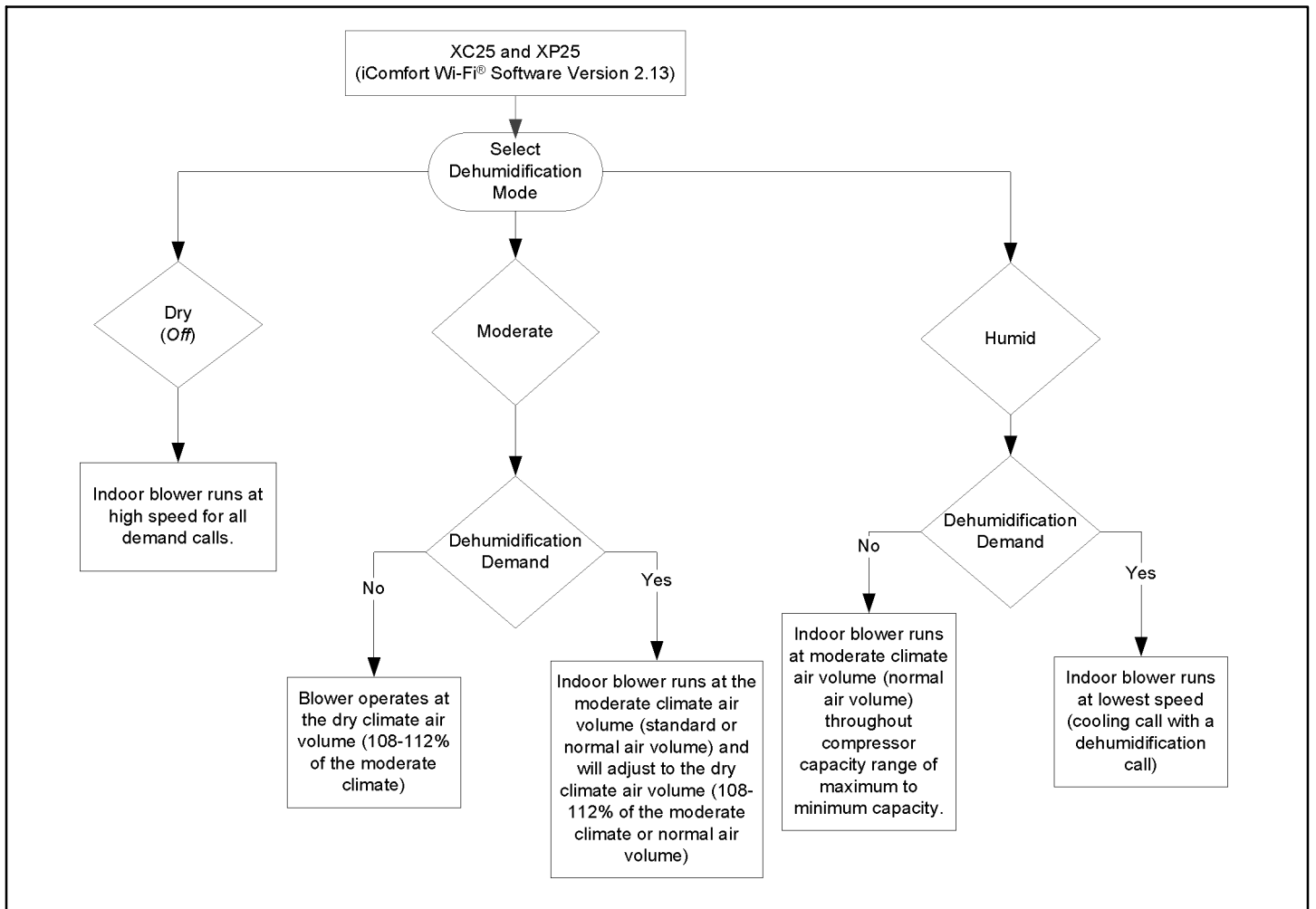


FIGURE 3. XC25 AND XP25 DEHUMIDIFICATION MODES WITHOUT ZONING

4. Dehumidification Modes — without Zoning (iComfort Wi-Fi® Software 2.1 and later) — Non-Communicating
TABLE 4

Lennox and Other Brands of Non-Communicating Outdoor Units where Applicable		
iComfort Wi-Fi® Software Version 2.02	iComfort Wi-Fi® Software Version 2.1 and later (if compressor operation is altered or not).	
Original Parameter Label	New Parameter Label	Resulting Operation
Off	Off	Off
Basic	Medium	<ul style="list-style-type: none"> Dehumidification only with call for cooling and runs dehumidification air volume (70% of the cooling at volume default. If two-stage unit, then will upstage to second-stage compressor.
Precision	High	<ul style="list-style-type: none"> Runs with or without a demand for cooling with a 2°F over cool Runs low blower speed.

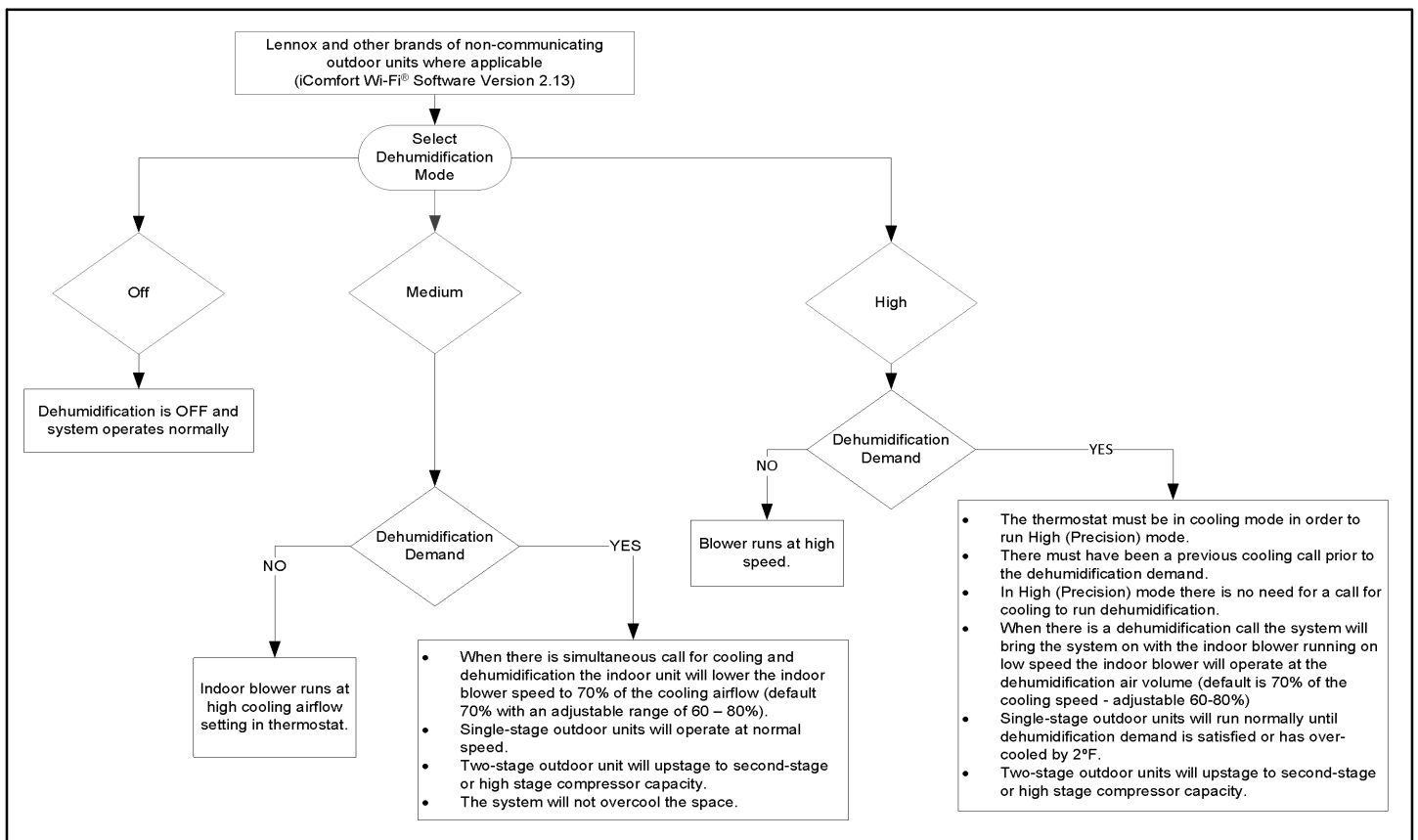


FIGURE 4. DEHUMIDIFICATION MODES WITHOUT ZONING (OTHER EQUIPMENT — NON-COMMUNICATING)

5. Dehumidification — with Zoning (iComfort Wi-Fi® Software Version 2.1 and Later) - Communicating

TABLE 5

Lennox Communicating Outdoor Units Only		
iComfort Wi-Fi® Software Version 2.02	iComfort Wi-Fi® Software Version 2.1 and later (Auxiliary and Humiditrol® Dehumidification)	iComfort Wi-Fi® Software Version 2.1 and later (Lennox Communicating Outdoor Units configured for moderate or humid mode)
Not available	Dry = Off	
Not available	<p>Moderate and Humid = On</p> <p>(There is no difference between moderate and humid mode settings for dehumidification. Auxiliary or Humiditrol® will work if no other demands for heating or cooling are active for any zone.)</p>	<ul style="list-style-type: none"> Moderate and humid dehumidification modes will only be allowed when zoning is set to OFF. System must be <u>manually</u> set to zoning off mode from the thermostat home screen. When the zoning function is set to OFF, the system will operate as if no zoning equipment is connected.

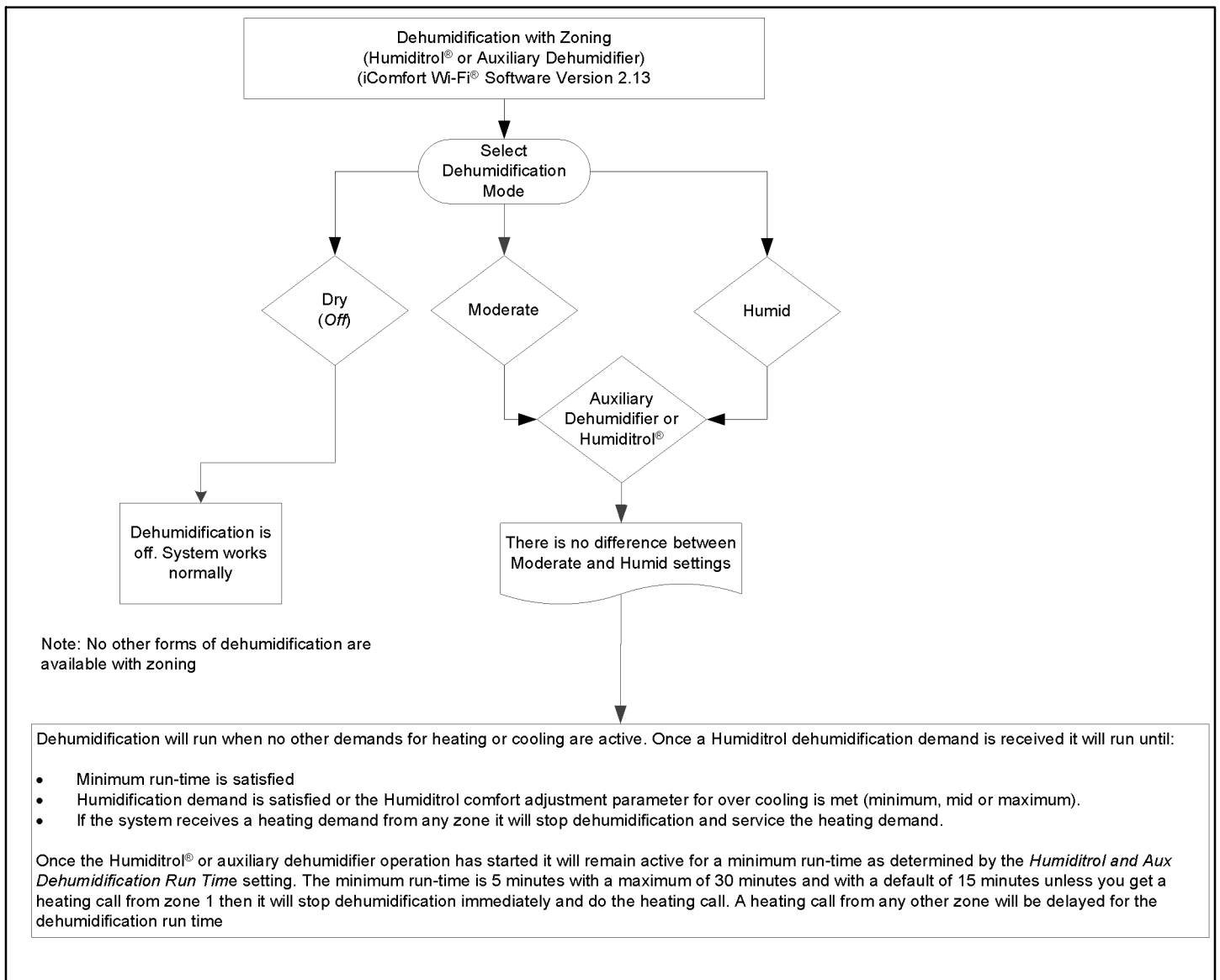


FIGURE 5. DEHUMIDIFICATION MODES WITH ZONING

6. Indoor Air Volume Relationship with Climate IQ™ (iComfort Wi-Fi® Software 2.13 and later) — Communicating (XC25 and XP25)

TABLE 6

Indoor Air Volume Relationship at Climate IQ™ Settings (XC25 and XP25)			
Unit Models	Moderate Climate Indoor Air Volume at 100% Compressor Capacity (Factory Default)	Humid Climate Indoor Air Volume at 100% Compressor Capacity	Dry Climate Indoor Air Volume at 100% Compressor Capacity
XC25-024, XP25-024	850 CFM	70% of Moderate Climate CFM	108% - 112% of Moderate Climate CFM
XC25-036, XP25-036	1250 CFM		
XC25-048, XP25-048	1600 CFM		
XC25-060, XP25-060	1800 CFM		

NOTE: Indoor air volume tracks compressor capacity throughout compressor operating range of maximum to minimum capacity.

7. Humiditrol® Mode Selected — Climate IQ™ (with Zoning) — XC25 / XP25

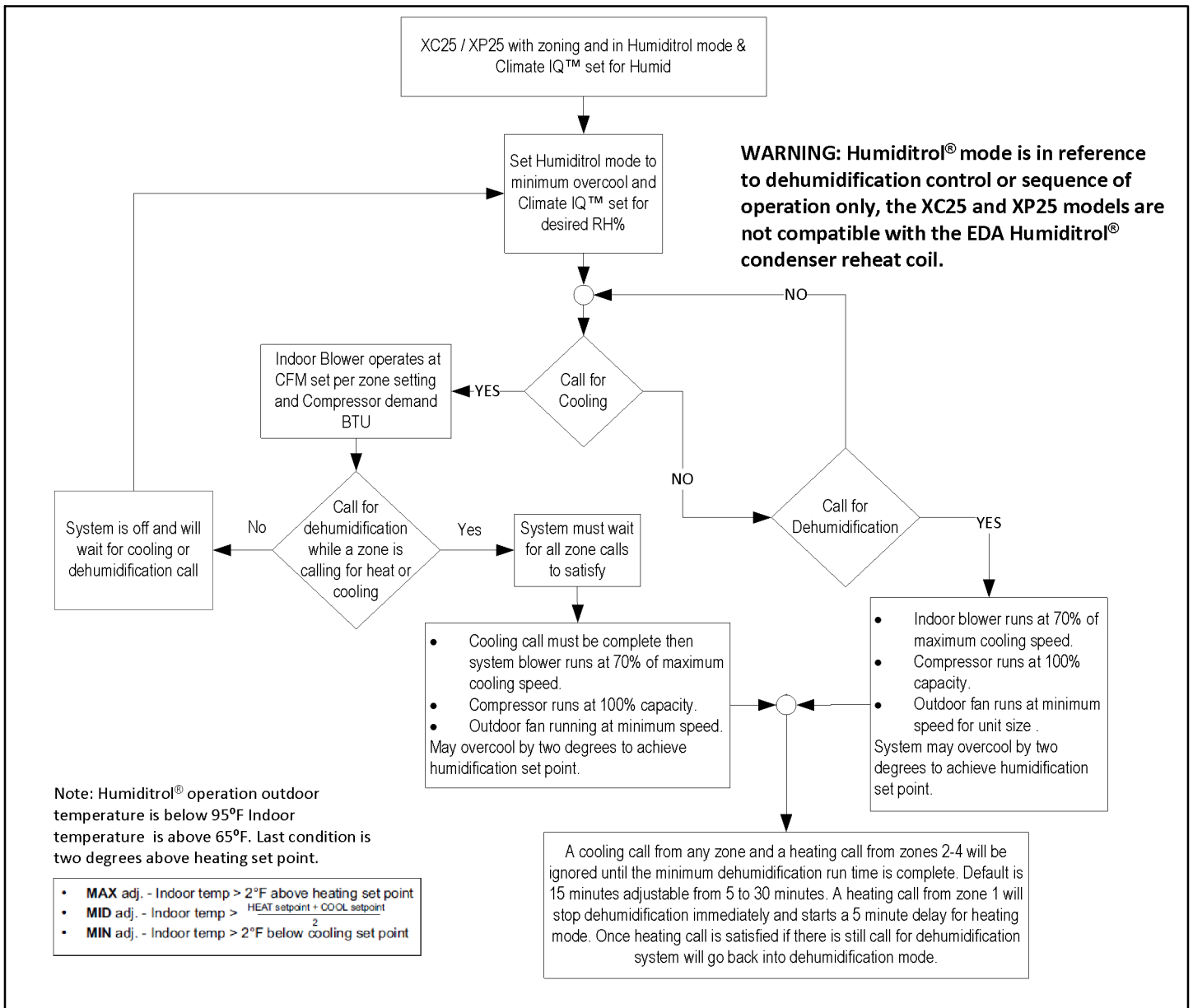


FIGURE 6. XC25 / XP25 WITH HUMIDITROL® MODE SELECTED (WITH ZONING)

8. Humiditrol® Mode Selected — Climate IQ™ (without Zoning) — XC25 / XP25

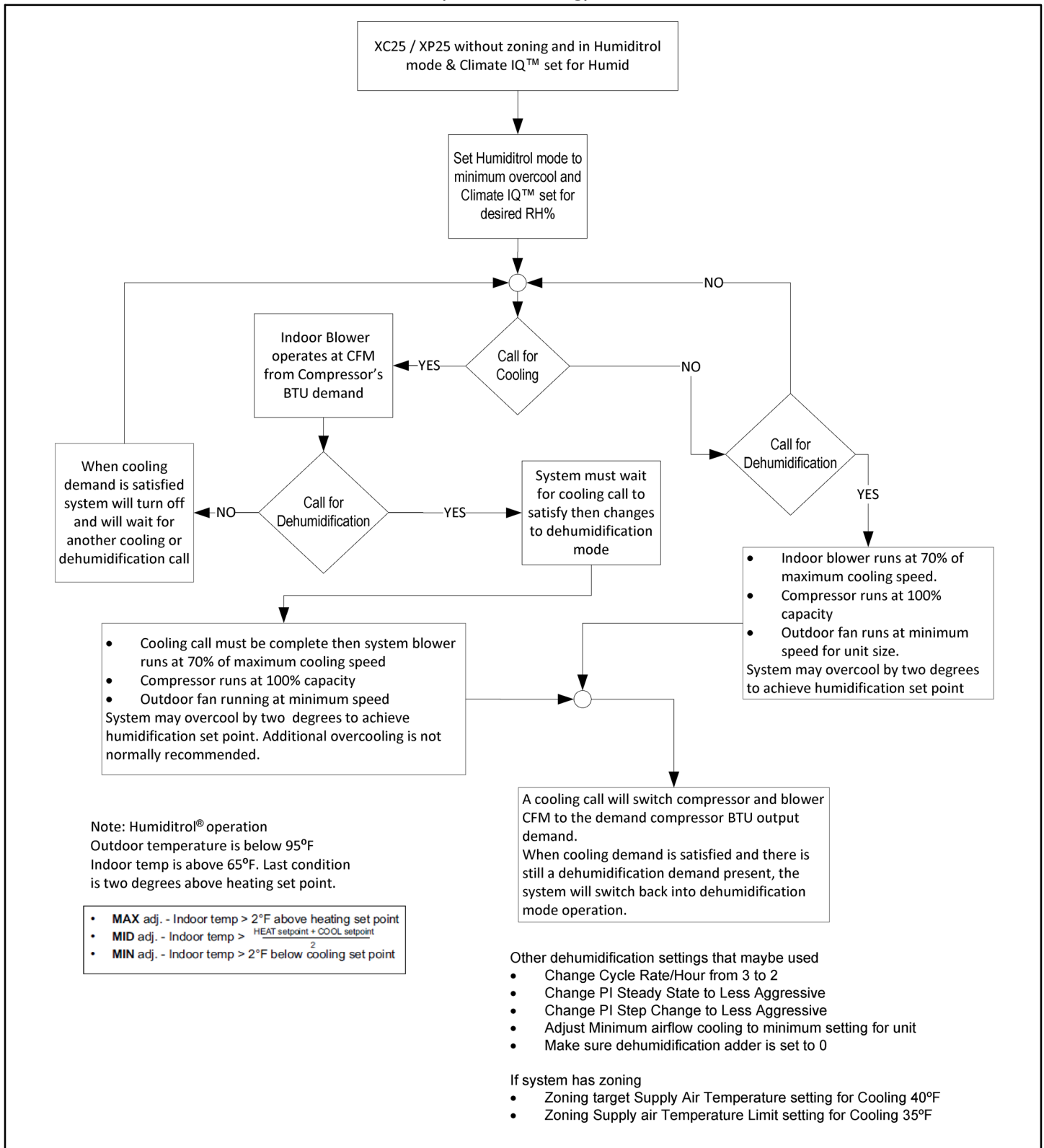


FIGURE 7. XC25 / XP25 WITH HUMIDITROL® MODE SELECTED (WITHOUT ZONING)

HUMIDIFICATION

1. Humidification Modes — without Zoning (iComfort Wi-Fi® Software Version 2.1 and later)

TABLE 7

Modes	With A Heating Call	Without A Heating Call
Basic	<ul style="list-style-type: none"> Thermostat is in heating mode with a demand for heating and humidification. Once humidification setpoint is satisfied then humidification is terminated. 	No humidification
Basic Dew Point	<ul style="list-style-type: none"> Thermostat is in heating mode with a demand for both heating and humidification. Dew point control requires an outdoor temperature sensor which is factory installed in an iComfort® outdoor unit or may be installed separately. Humidification setpoint is based on outdoor temperature and user-defined dew point adjustment. Once Humidification setpoint is satisfied then humidification is terminated. 	No humidification
Precision	<ul style="list-style-type: none"> Thermostat is in heating mode with a demand for both heating and a humidification. Once humidification setpoint is satisfied then humidification is terminated. 	<ul style="list-style-type: none"> Thermostat is in heating mode without a demand for heating. There is a demand for humidification when blower and humidifier are on. Once humidification setpoint is satisfied then humidification is terminated.
Precision Dew Point	<ul style="list-style-type: none"> Thermostat is in heating mode with a demand for both heating and humidification. Dew point control requires an outdoor temperature sensor which is factory installed in an iComfort® outdoor unit or may be installed separately. Humidification setpoint is based on outdoor temperature and user-defined dew point adjustment. Once humidification setpoint is satisfied then humidification is terminated. 	<ul style="list-style-type: none"> Thermostat is in heating mode with no demand for heating. There is a demand for humidification when blower and humidifier are on. Outdoor temperature is available either by outdoor sensor or Internet. Humidification setpoint is based on outdoor temperature and user-defined dew point adjustment. RH set point - OAT/2 + 25 RH DP adjustment Once humidification setpoint is satisfied then humidification is terminated.

2. Humidification — with Zoning (iComfort Wi-Fi® Software Version 2.1 and 2.11)

TABLE 8

Mode	With Heating Call	Without Heating Call
Precision Mode (Only)	No Humidification	<ul style="list-style-type: none"> Humidification is not allowed unless system is in zoning off mode and has been setup as Precision mode and has a demand for humidification. If system gets a demand for either heating or cooling from any other zone then humidification is immediately turned off. Once humidification setpoint is satisfied then humidification and blower is terminated.

3. Humidification Mode — with Zoning (iComfort Wi-Fi® Software Version 2.12)

TABLE 9

With Heating Call	Without Heating Call
Humidification is only available with zoning in Heat Only mode. No other heating or program modes will allow humidification in 2.12 software.	<ul style="list-style-type: none"> • Thermostat is in heating mode without a demand for heating. • There is a demand for humidification call. • Humidification is allowed with zoning turned on or off. Blower and humidifier are turned on. • If system receives a demand for either heating or cooling from any other zone, then humidification is immediately turned off. • Once humidification setpoint is satisfied then humidification is terminated.

4. Humidification Modes — with Zoning (iComfort Wi-Fi® Software Version 2.13) - Communicating (XC17, XP17, XP17N, XC21, XP21, XP21N, XC25 and XP25)

TABLE 10

Modes	With Heating Call	Without Heating Call
Basic	<ul style="list-style-type: none"> • Thermostat is in heating mode with a demand for both heating and humidification (humidification is controlled by iComfort® thermostat in zone 1). • A heating call from any zone and a humidification call from the iComfort® thermostat in zone 1 will activate humidification. 	No Humidification
Basic Dew Point	<ul style="list-style-type: none"> • Thermostat is in heating mode with a demand for both heating and humidification (humidification is controlled by iComfort® thermostat in zone 1). • Outdoor temperature is available by either outdoor sensor or Internet. Requires outdoor sensor. Outdoor sensor provided in iComfort® outdoor unit or provided by separate outdoor sensor. • Humidification setpoint is based on outdoor temperature and user-defined dew point adjustment. • A heating demand from any zone and a humidification demand from the iComfort® thermostat in zone 1 will activate humidification. • Blower will operate at the requested zone air volume. 	No Humidification
Precision	<ul style="list-style-type: none"> • Thermostat is in heating mode with a demand for both heating and a humidification (humidification is controlled by iComfort® thermostat in zone 1). • A heating call from any zone and a humidification demand by the iComfort® thermostat in zone 1 will activate humidification. • Once humidification setpoint is satisfied then humidification is terminated even if heating demand is present. • Blower will operate at the requested zone air volume. 	<ul style="list-style-type: none"> • Thermostat is in heating mode with no demand for heating • Blower will operate the humidification air volume and all zone dampers will be open to deliver humidified air. • A demand is present for humidification from the iComfort® thermostat in zone 1 • Once humidification setpoint is satisfied then humidification is terminated.
Precision Dew Point	<ul style="list-style-type: none"> • Thermostat is in heating mode with a demand for both heating and humidification (humidification is controlled by iComfort® thermostat in zone 1). • Outdoor temperature is available by either outdoor sensor or Internet. Requires outdoor sensor. Outdoor sensor provided in iComfort® outdoor unit or provided by separate outdoor sensor. • Humidification setpoint is based on outdoor temperature and user-defined dew point adjustment. Once humidification setpoint is satisfied then humidification is terminated even if heating demand is present. 	<ul style="list-style-type: none"> • Thermostat is in heating mode with no demand for heating. • No active demand for humidification from the iComfort® thermostat in zone 1 • Outdoor temperature is available by either outdoor sensor or Internet. Requires outdoor sensor. Outdoor sensor provided in iComfort® outdoor unit or provided by separate outdoor sensor. • Humidification setpoint is based on outdoor temperature and user-defined dew point adjustment. Blower and humidifier are turned on. • Once humidification setpoint is satisfied then humidification is terminated • Blower will operate the humidification air volume and all zone dampers will be open to deliver humidified air.

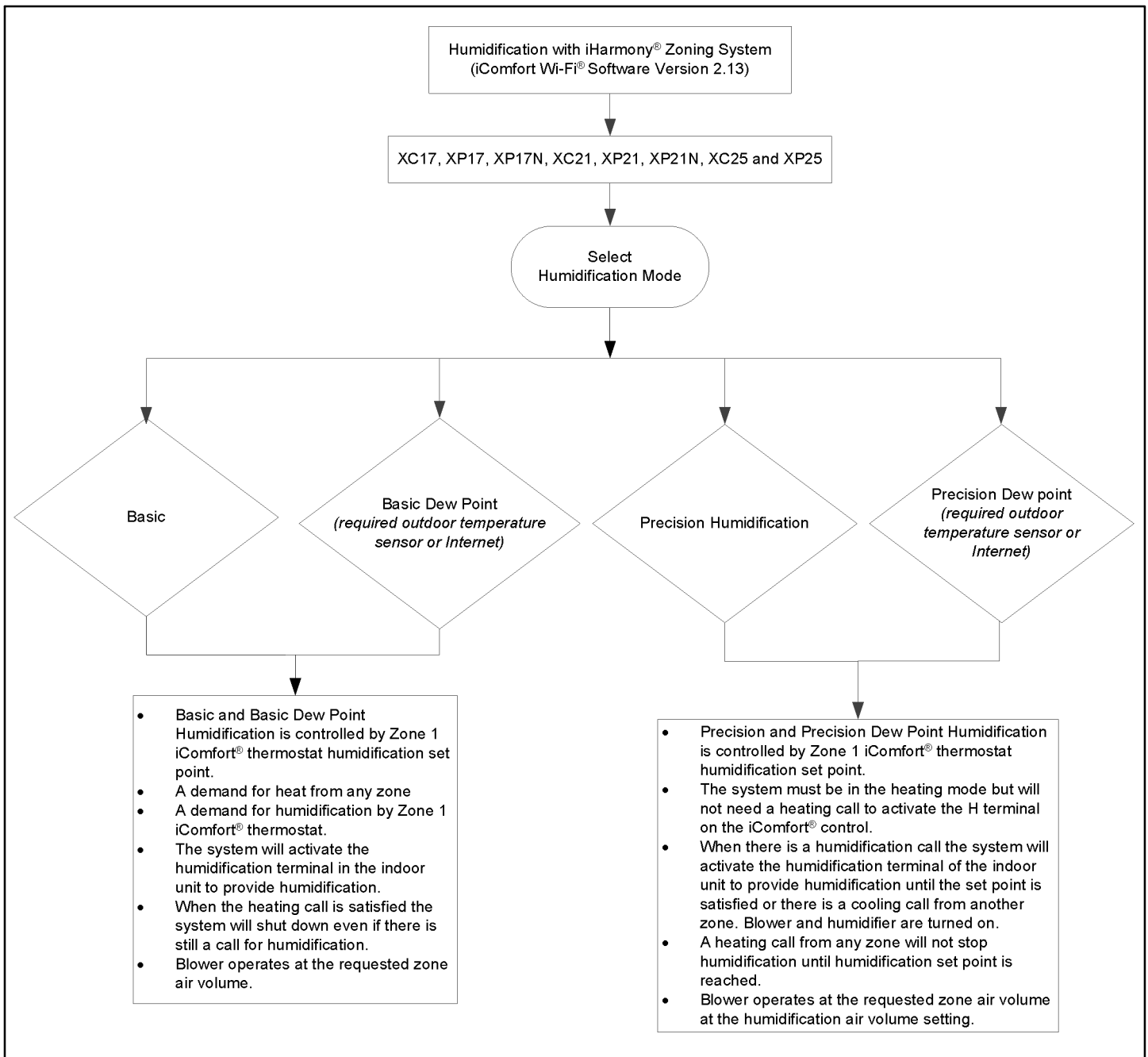


FIGURE 8. HUMIDIFICATION — WITH ZONING (iComfort Wi-Fi® Software Version 2.13)