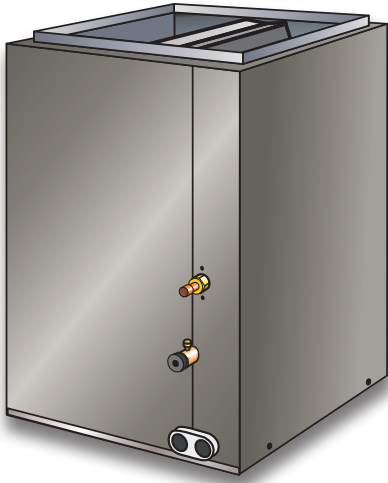




Upflow - Cased - Air Conditioning Only

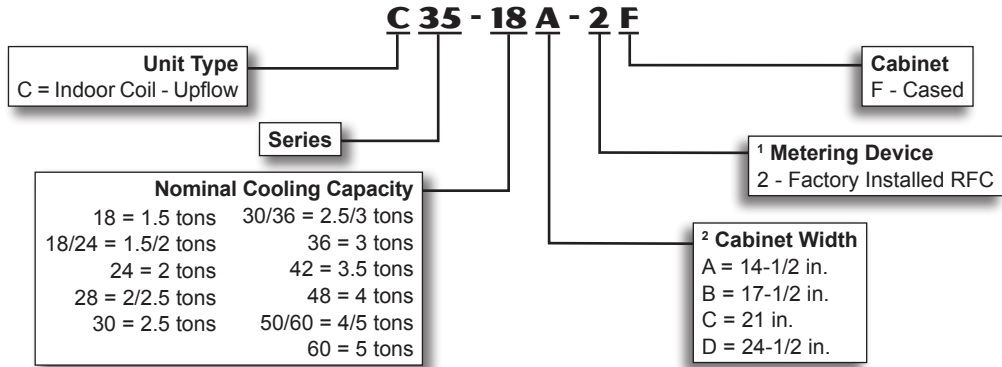
Bulletin No. 210666  
May 2015

PRODUCT SPECIFICATIONS



1.5 to 5 Tons

MODEL NUMBER IDENTIFICATION



<sup>1</sup> Factory installed RFC orifice must be replaced with a field installed expansion valve.  
<sup>2</sup> Furnaces with the same letter designation will physically match the indoor coil.

FEATURES

CONTENTS

Air Resistance..... 4  
Dimensions ..... 5  
Features..... 1  
Model Number Identification ..... 1  
Specifications..... 2

WARRANTY

**All Covered Components** - Limited warranty for five years in residential applications, one year warranty in non-residential applications. Refer to Lennox Equipment Limited Warranty certificate included with equipment for details.

APPLICATIONS

*NOTE - For use with air conditioners only.*  
Lennox designed cased upflow indoor coils can easily be installed with most Lennox upflow furnaces.  
Applicable to expansion valve only.  
Expansion valve systems require field installed kit.  
See Product Specifications in section Air Conditioners for indoor coil applications and cooling capacities.  
*NOTE - Factory installed RFC orifice must be replaced with field installed expansion valve.*

TESTING

Tested with matching air conditioner units.  
Rated in accordance with AHRI Standard 210/240-2008 conditions and DOE test procedures.  
Air resistance tests from Lennox Laboratory air test chamber.

## FEATURES

### COIL CONSTRUCTION

- Aluminum tubing, hairpins, distributor and header tubes.
- Copper refrigerant sweat connections on both liquid and suction lines for easy brazing.
- Ripple-edged aluminum fins.
- Lanced fins provide maximum exposure of fin surface to air stream.
- Rifled tubing provides superior refrigerant heat transfer.
- Twin coil construction assembled in a A" configuration for large surface area.
- Non-corrosive, UV-resistant polymer drain pan with dual fpt drain connections.
- Liquid line seal nut section furnished for installation of expansion valve.
- High pressure testing insures leakproof construction.

### Optional Accessories

#### Expansion Valve Kits

- Expansion valve available for field installation.
- See Air Conditioners Product Specifications for expansion valve kit selection.

### CABINET

- Cabinets insulated with thick fiberglass insulation.
- Constructed of pre-painted heavy gauge steel.
- Flanges provided in outlet opening of cabinet for ease of plenum connection.
- Engaging holes furnished on cabinet for alignment with furnace.
- Removable panels provide access to coil.
- See dimension drawing.

#### Furnace Match-Up

- Coils exactly match corresponding furnaces with same letter designation in model number. No adaptor required.
- Engaging holes furnished on cabinet for alignment.

## SPECIFICATIONS

### 1.5 TO 2 TON

General Data		Model No.	C35-18A-2F	C35-18/24A-2F	C35-18/24B-2F	C35-24A-2F	C35-24B-2F
Nominal size - Tons			1.5	1.5	1.5 / 2	2	2
Line Connections in.	Suction / vapor o.d. - sweat		3/4	3/4	3/4	3/4	3/4
	Liquid o.d. - sweat		3/8	3/8	3/8	3/8	3/8
	Condensate drain (fpt)		(2) 3/4	(2) 3/4	(2) 3/4	(2) 3/4	(2) 3/4
Indoor Coil	Net face area sq. ft.		3.11	3.11	3.11	3.55	3.55
	Tube diameter - in.		3/8	3/8	3/8	3/8	3/8
	Number of rows		3	2	2	3	3
	Fins per inch		12	18	18	14	14
Matching Lennox Furnace - Cabinet Width Designation			A	A	B	A	B
Coil & Furnace Cabinet Width - in.			14-1/2	14-1/2	17-1/2	14-1/2	17-1/2
Shipping Data - lbs.			35	31	31	39	41

<b>SPECIFICATIONS</b>		<b>2 TO 3 TON</b>				
General Data	Model No.	C35-28A-2F	C35-28B-2F	C35-30A-2F	C35-30B-2F	C35-30/36A-2F
	Nominal size - Tons	2/2.5	2/2.5	2.5	2.5	2.5/3
Line Connections in.	Suction / vapor o.d. - sweat	3/4	3/4	3/4	3/4	3/4
	Liquid o.d. - sweat	3/8	3/8	3/8	3/8	3/8
	Condensate drain (fpt)	(2) 3/4	(2) 3/4	(2) 3/4	(2) 3/4	(2) 3/4
Indoor Coil	Net face area sq. ft.	4.0	4.0	4.44	4.44	4.89
	Tube diameter - in.	3/8	3/8	3/8	3/8	3/8
	Number of rows	3	2	3	3	2
	Fins per inch	18	18	13	13	18
Matching Lennox Furnace - Cabinet Width Designation		A	B	A	B	A
Coil & Furnace Cabinet Width - in.		14-1/2	17-1/2	14-1/2	17-1/2	14-1/2
Shipping Data - lbs.		37	40	47	49	45

<b>SPECIFICATIONS</b>		<b>2 TO 3.5 TON</b>				
General Data	Model No.	C35-30/36B-2F	C35-30/36C-2F	C35-36A-2F	C35-36B-2F	C35-42B-2F
	Nominal size - Tons	2.5/3	2.5/3	3	3	3.5
Line Connections in.	Suction / vapor o.d. - sweat	3/4	3/4	3/4	3/4	7/8
	Liquid o.d. - sweat	3/8	3/8	3/8	3/8	3/8
	Condensate drain (fpt)	(2) 3/4	(2) 3/4	(2) 3/4	(2) 3/4	(2) 3/4
Indoor Coil	Net face area sq. ft.	4.89	4.89	4.89	4.89	5.77
	Tube diameter - in.	3/8	3/8	3/8	3/8	3/8
	Number of rows	2	2	3	3	3
	Fins per inch	18	18	14	14	13
Matching Lennox Furnace - Cabinet Width Designation		B	C	A	B	B
Coil & Furnace Cabinet Width - in.		17-1/2	21	14-1/2	17-1/2	17-1/2
Shipping Data - lbs.		46	50	49	51	60

<b>SPECIFICATIONS</b>		<b>3.5 TO 5 TON</b>					
General Data	Model No.	C35-42C-2F	C35-48B-2F	C35-48C-2F	C35-50/60C-2F	C35-60C-2F	C35-60D-2F
	Nominal size - Tons	3.5	4	4	4/5	5	5
Line Connections in.	Suction / vapor o.d. - sweat	7/8	7/8	7/8	7/8	7/8	7/8
	Liquid o.d. - sweat	3/8	3/8	3/8	3/8	3/8	3/8
	Condensate drain (fpt)	(2) 3/4	(2) 3/4	(2) 3/4	(2) 3/4	(2) 3/4	(2) 3/4
Indoor Coil	Net face area sq. ft.	5.77	4.88	7.0	5.78	7.50	7.48
	Tube diameter - in.	3/8	3/8	3/8	3/8	3/8	3/8
	Number of rows	3	3	3	3	3	3
	Fins per inch	13	12	15	12	16	14
Matching Lennox Furnace - Cabinet Width Designation		C	B	C	C	C	D
Coil & Furnace Cabinet Width - in.		21	17-1/2	21	21	21	24-1/2
Shipping Data - lbs.		63	48	72	66	76	77

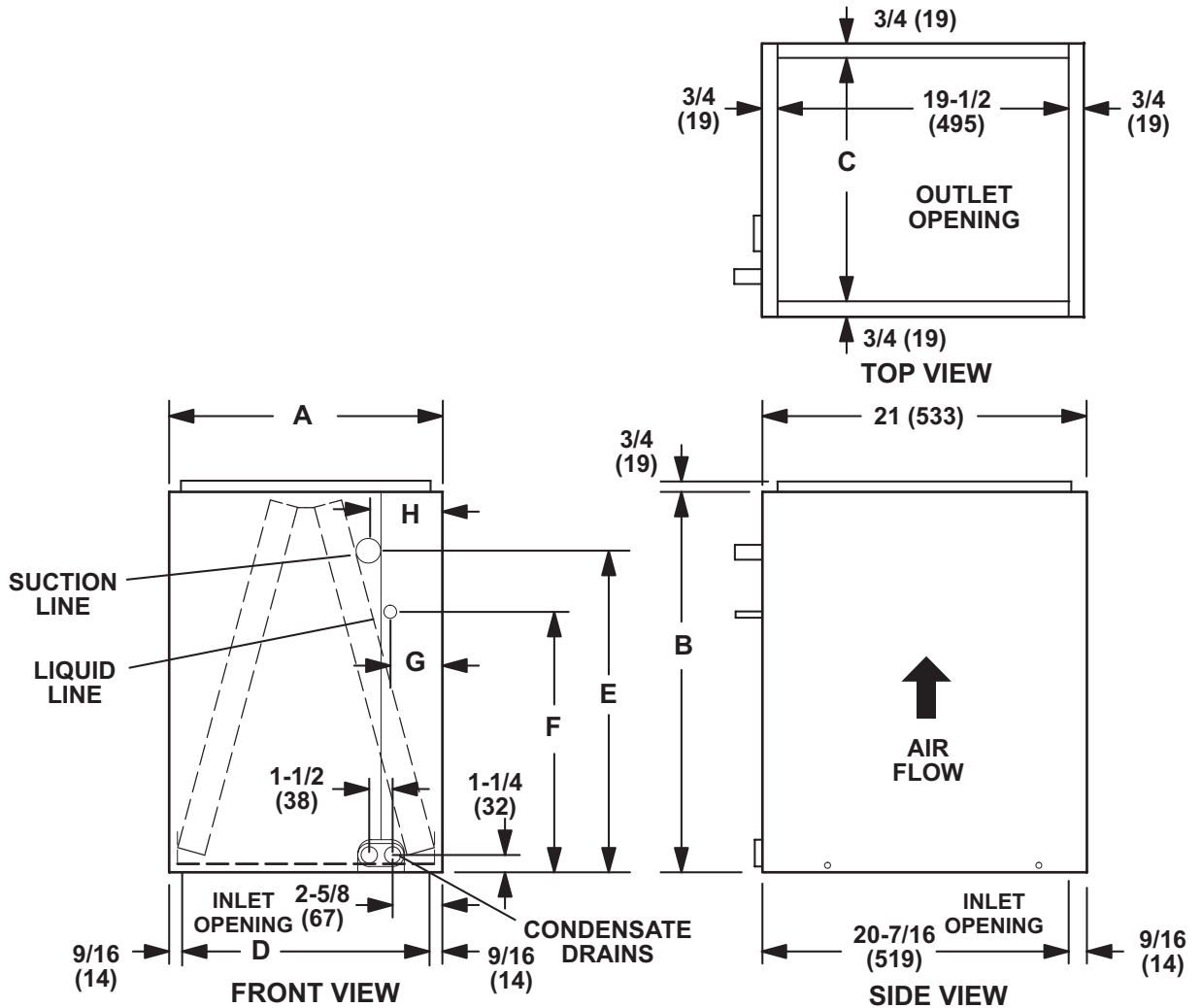
## AIR RESISTANCE

Model No.	Air Volume cfm	Total Resistance	
		Dry Coil	Wet Coil
		in. w.g.	in. w.g.
C35-18A-2F	200	0.01	0.04
	400	0.03	0.05
	600	0.08	0.09
	800	0.13	0.16
	1000	0.20	0.24
C35-18/24A-2F C35-18/24B-2F	400	0.06	0.08
	600	0.11	0.17
	800	0.18	0.25
	1000	0.27	0.39
	1200	0.37	0.52
C35-24A-2F	400	0.05	0.05
	600	0.09	0.10
	800	0.16	0.18
	1000	0.23	0.26
	1200	0.32	0.36
C35-24B-2F	400	0.03	0.04
	600	0.07	0.09
	800	0.11	0.15
	1000	0.17	0.22
	1200	0.23	0.31
C35-28A-2F C35-28B-2F	600	0.09	0.12
	800	0.14	0.21
	1000	0.22	0.30
	1200	0.30	0.43
	1400	0.40	0.55
C35-30A-2F	600	0.07	0.08
	800	0.12	0.13
	1000	0.18	0.20
	1200	0.26	0.28
	1400	0.34	0.37
C35-30B-2F	600	0.06	0.06
	800	0.09	0.11
	1000	0.13	0.16
	1200	0.19	0.23
	1400	0.25	0.31
C35-30/36A-2F C35-36A-2F	800	0.13	0.14
	1000	0.19	0.21
	1200	0.27	0.30
	1400	0.34	0.39
	1600	0.45	0.51

Model No.	Air Volume cfm	Total Resistance	
		Dry Coil	Wet Coil
		in. w.g.	in. w.g.
C35-30/36B-2F C35-30/36C-2F C35-36B-2F C35-48B-2F	800	0.08	0.11
	1000	0.13	0.16
	1200	0.17	0.21
	1400	0.22	0.28
	1600	0.29	0.34
C35-42B-2F	1000	0.13	0.13
	1200	0.18	0.18
	1400	0.23	0.24
	1600	0.30	0.31
	1800	0.37	0.40
C35-42C-2F	1000	0.07	0.09
	1200	0.10	0.12
	1400	0.13	0.16
	1600	0.16	0.20
	1800	0.20	0.24
C35-48C-2F	1200	0.08	0.12
	1400	0.13	0.17
	1600	0.17	0.22
	1800	0.22	0.28
	2000	0.28	0.35
C35-50/60C-2F	1200	0.13	0.17
	1400	0.18	0.23
	1600	0.23	0.29
	1800	0.28	0.37
	2000	0.34	0.43
C35-60C-2F	1400	0.15	0.19
	1600	0.19	0.23
	1800	0.24	0.28
	2000	0.29	0.34
	2200	0.33	0.40
	2400	0.39	0.46
C35-60D-2F	1400	0.11	0.15
	1600	0.14	0.18
	1800	0.17	0.21
	2000	0.21	0.27
	2200	0.25	0.32
	2400	0.30	0.37

## DIMENSIONS - INCHES (MM)

C35-18/24(A/B), -28(A/B), -30/36(A/B/C), -36(A/B) Coils

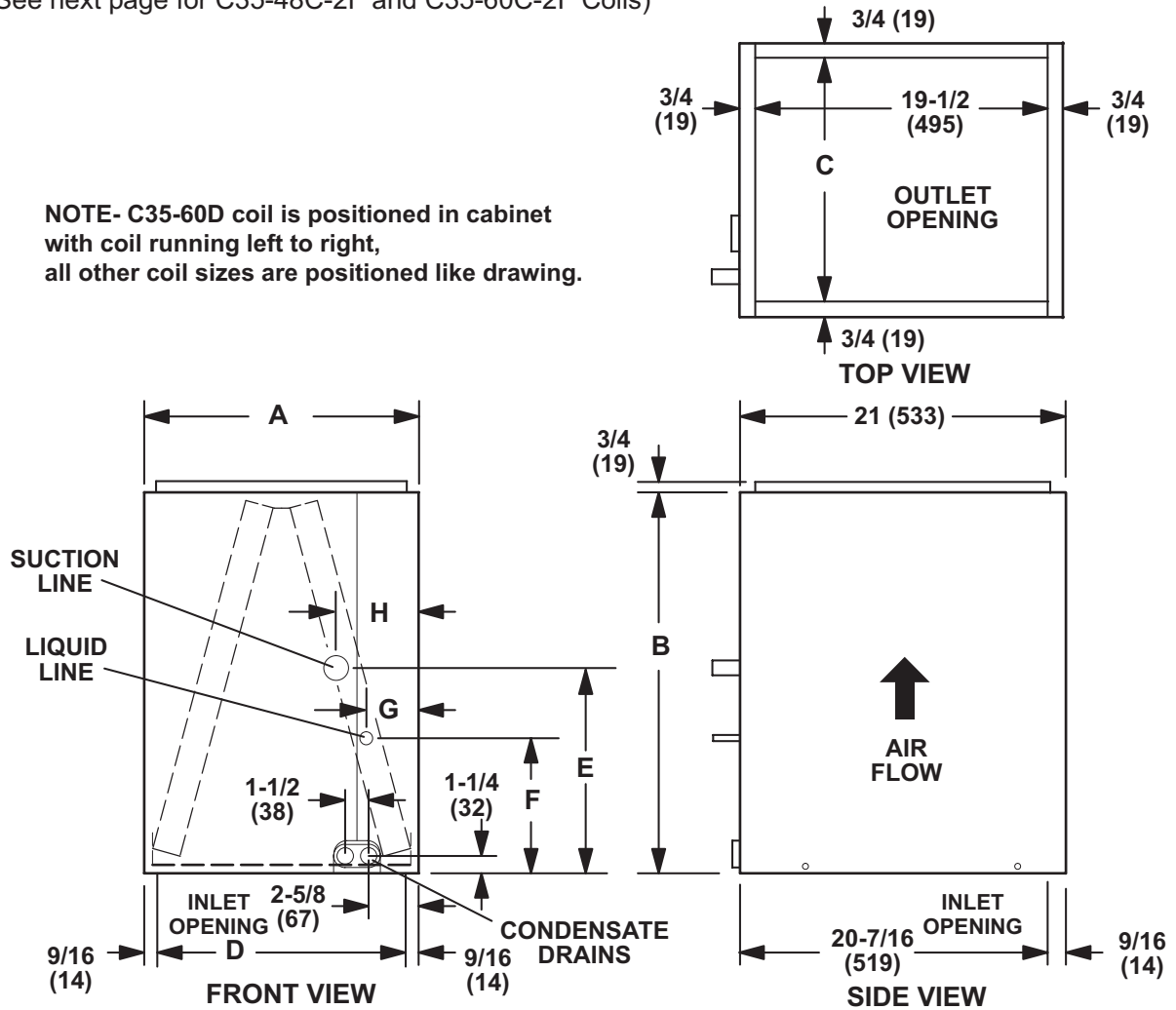


Model Number	A		B		C		D		E		F		G		H	
	in.	mm	in.	mm	in.	mm	in.	mm	in.	mm	in.	mm	in.	mm	in.	mm
C35-18/24A-2F	14-1/2	368	16-1/2	419	13	330	13-3/8	340	10-1/4	260	3-1/2	89	3	76	3-7/8	98
C35-18/24B-2F	17-1/2	445	16-1/2	419	16	406	16-3/8	416	9-5/8	244	3-1/2	89	3	76	3-7/8	98
C35-28A-2F	14-1/2	368	20-1/2	521	13	330	13-3/8	340	14-3/4	375	3-3/8	86	3	76	3-7/8	98
C35-28B-2F	17-1/2	445	20-1/2	521	16	406	16-3/8	416	14-1/2	368	3-3/8	86	3-3/8	86	4-1/8	108
C35-30/36A-2F	14-1/2	368	24-1/2	622	13	330	13-3/8	340	18-5/8	219	4-3/4	121	3	76	3-7/8	98
C35-30/36B-2F	17-1/2	445	24-1/2	622	16	406	16-3/8	416	18-3/8	467	4-3/4	121	3-1/4	83	4-1/8	108
C35-30/36C-2F	21	533	24-1/2	622	19-1/2	495	19-7/8	505	17-3/4	451	4-3/4	121	2-3/4	70	3-5/8	92
C35-36A-2F	14-1/2	368	24-1/2	622	13	330	13-3/8	340	13-3/8	340	4-3/4	121	2-1/8	54	3-1/4	83
C35-36B-2F	17-1/2	445	24-1/2	622	16	406	16-3/8	416	13	330	4-3/4	121	2-5/8	67	3-7/8	98

## DIMENSIONS - INCHES (MM)

**C35-18A, -24(A/B), -30(A/B), -42(B/C), -48(B), -50/60C and -60D Coils**  
 (NOTE - See next page for C35-48C-2F and C35-60C-2F Coils)

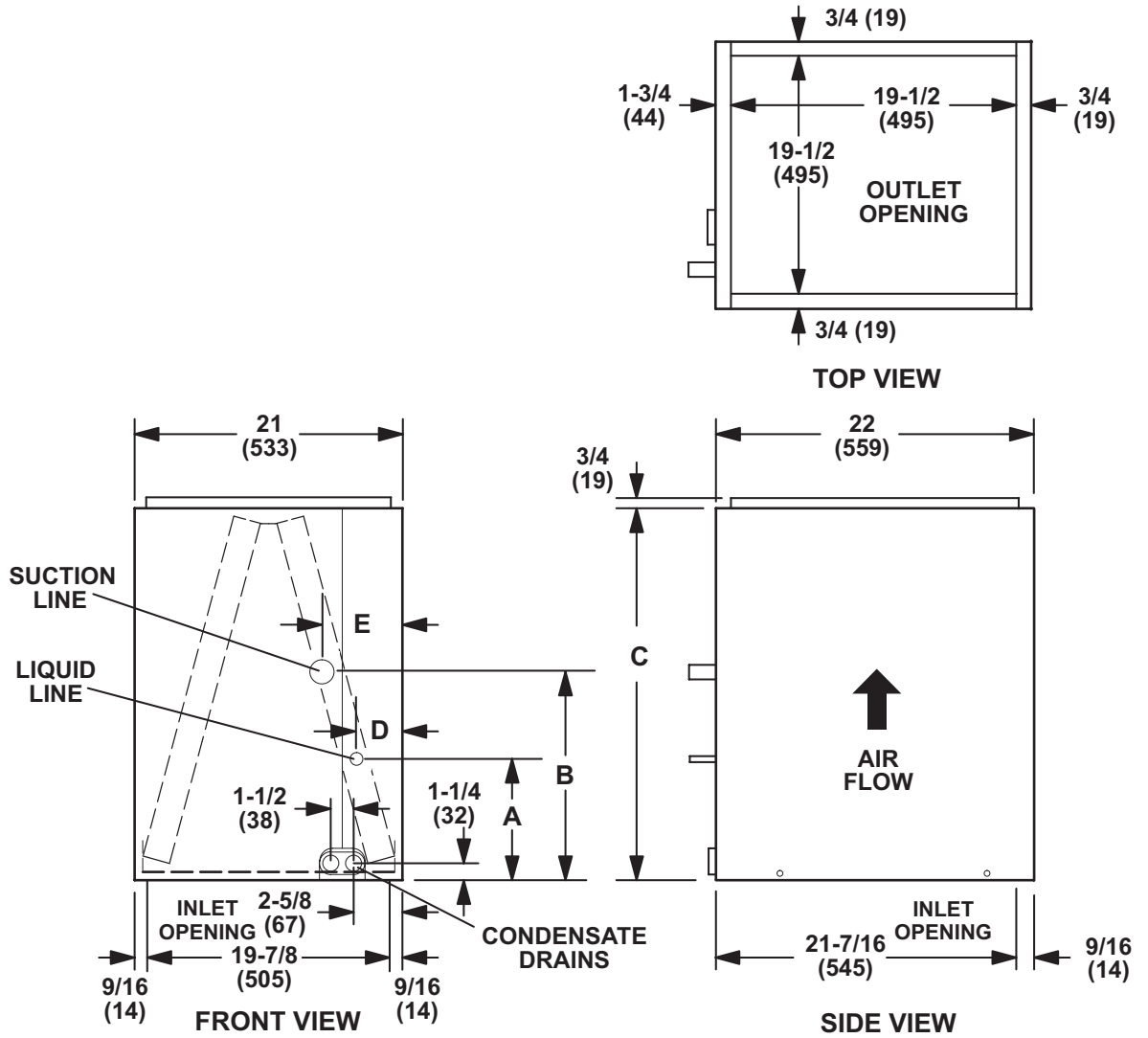
**NOTE - C35-60D coil is positioned in cabinet with coil running left to right, all other coil sizes are positioned like drawing.**



Model Number	A		B		C		D		E		F		G		H	
	in.	mm	in.	mm	in.	mm	in.	mm	in.	mm	in.	mm	in.	mm	in.	mm
C35-18A-2F	14-1/2	368	16-1/2	419	13	330	13-3/8	340	13-1/8	333	3-1/2	89	3	76	3-7/8	98
C35-24A-2F	14-1/2	368	18-1/2	470	13	330	13-3/8	340	14-3/4	121	3-3/8	86	3	76	3-7/8	98
C35-24B-2F	17-1/2	445	18-1/2	470	16	406	16-3/8	416	14-1/2	368	3-1/2	89	3-1/4	83	4-1/8	108
C35-30A-2F	14-1/2	368	22-1/2	572	13	330	13-3/8	340	13-1/8	333	3-3/8	86	1-1/2	38	2-3/8	60
C35-30B-2F	17-1/2	445	22-1/2	572	16	406	16-3/8	416	13	330	3-3/8	86	3-1/4	83	4-1/8	108
C35-42B-2F	17-1/2	445	27-1/2	699	16	406	16-3/8	416	16	406	4-7/8		3-1/4	83	4	102
C35-42C-2F	21	533	27-1/2	699	19-1/2	495	19-7/8	505	16-1/8	410	4-3/4	121	2-3/4	70	3-5/8	92
C35-48B-2F	17-1/2	445	24-1/2	622	16	406	16-3/8	416	9-7/8	251	3-5/8	92	3-1/8	79	4-1/8	108
C35-50/60C-2F	21	533	27-1/2	699	19-1/2	495	19-7/8	505	16-1/8	410	4-3/4	121	3-5/8	92	2-3/4	70
C35-60D-2F	24-1/2	622	29-1/2	749	23	584	23-3/8	594	19-1/4	489	4-3/4	121	2-5/8	67	3-3/8	86

# DIMENSIONS - INCHES (MM)

C35-48C-2F and C35-60C-2F



Model Number	A		B		C		D		E	
	in.	mm	in.	mm	in.	mm	in.	mm	in.	mm
C35-48C-2F	4-3/4	121	12-1/8	308	29-1/2	749	3-3/8	86	2-1/2	64
C35-60C-2F	4-3/8	111	12	305	31-1/2	800	2-5/8	67	1-5/8	41



Visit us at [www.lennox.com](http://www.lennox.com)

For the latest technical information, [www.lennox.com/technical](http://www.lennox.com/technical)

Contact us at 1-800-4-LENNOX

NOTE - Due to Lennox' ongoing commitment to quality, Specifications, Ratings and Dimensions subject to change without notice and without incurring liability. Improper installation, adjustment, alteration, service or maintenance can cause property damage or personal injury. Installation and service must be performed by a qualified installer and servicing agency.

©2015 Lennox Industries, Inc.