



506143-01  
08/12  
Supersedes 11/08

**HEALTHY CLIMATE® UVC LIGHT  
SHIELDING BAFFLE KITS (Y5171 & Y5172)**

**INSTALLING SHIELDING BAFFLES FOR HEALTHY CLIMATE® GERMICIDAL LIGHTS:  
Y5171 FOR UVC-24V, UVC-41W-S, & UVC-41W-D; Y5172 FOR UVC-24V**

**Application**

Shielding baffle (catalog number Y5171) is for use with Healthy Climate® UVC lights model UVC-24V, UVC-41W-S, and UVC-41W-D using standard 16" lamps. Shielding baffle (catalog number Y5172) is used with Healthy Climate Light model UVC-24V when a 14" length lamp (catalog number Y5121) is installed.

**IMPORTANT - Shielding baffle must be used in air handler applications where the filter would be exposed to direct UVC light.**

**! DANGER**

**Ultraviolet (UVC) Radiation Hazard.**

**Any exposure will cause significant eye damage and may cause skin damage.**

**DO NOT look into UVC light source.**

**Access panels must be in place during appliance operation.**

**Disconnect power cord from UVC light appliance before servicing the UVC light, the air handling equipment or the duct system.**

**Installing the Shielding Baffle**

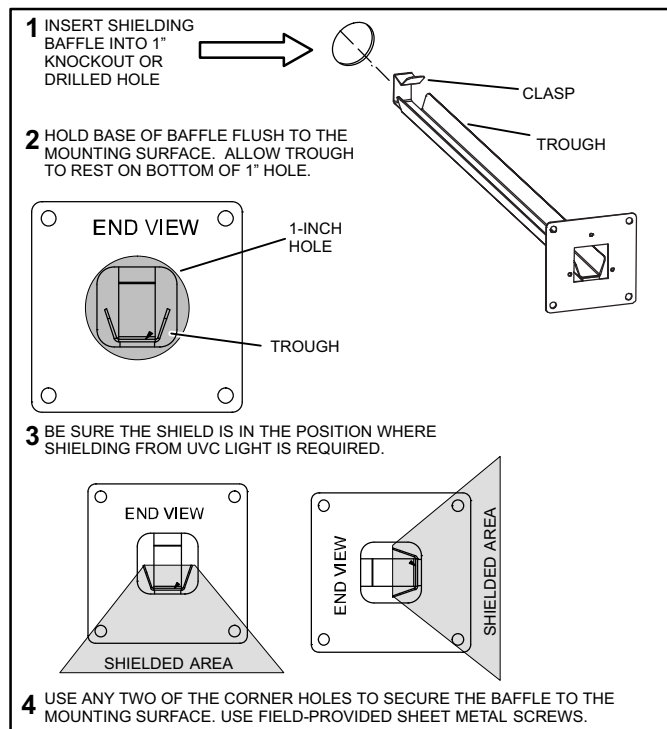
*NOTE - When installing the shielding baffle, also refer to the procedures provided in 506038-01 Installation and Homeowner's Instructions for Healthy Climate® Germicidal Light Models UVC-24V, UVC-41W-S, & UVC-41W-D.*

Install the lamp shielding baffle when installing light above a non-UVC resistant component, such as a filter. Adjust the baffle to ensure the component is not subject to direct UVC light. Install the shielding baffle as shown in figure 1.

**! CAUTION**

**Sharp Edges Hazard.**

**Equipment sharp edges can cause injury. Use protective gloves when grasping equipment edges.**



**Figure 1. Install the Shielding Baffle**



