



© 2011 Lennox Industries Inc.  
Dallas, Texas, USA

506617-01  
01/2011

## Integrated Control Replacement Kit

### INSTALLATION INSTRUCTIONS FOR INTEGRATED CONTROL REPLACEMENT KIT (74W03) USED WITH EL195 UNITS

#### **WARNING**

This kit is to be installed by a licensed professional technician (or equivalent) or other agency in accordance with the manufacturer's instructions, and in accordance with all codes and requirements of the authority having jurisdiction.

#### Shipping & Packing List

Package 1 of 1 contains:

- 1 - Integrated control - 103098-01

#### Application

Use replacement integrated control kit (74W03) with EL195 units. This control is designed for use with a 120V ignitor **only**. Do not install this integrated control in a furnace equipped with a **70V** or **95V** ignitor.

#### Installation

#### **WARNING**

Protect the control from direct contact with water. If the control has been in direct contact with water, replace the control.

**WHEN SERVICING CONTROLS**, label all wires prior to disconnecting. Wiring errors can cause improper and dangerous operation.

**VERIFY** proper operation after servicing.

#### **WARNING**

Disconnect power before servicing unit.

Shut off main gas supplies to appliance until installation is complete.

#### ELECTROSTATIC DISCHARGE (ESD) Precautions and Procedures

#### **CAUTION**

Electrostatic discharge can affect electronic components. Take precautions during furnace installation and service to protect the furnace's electronic controls.

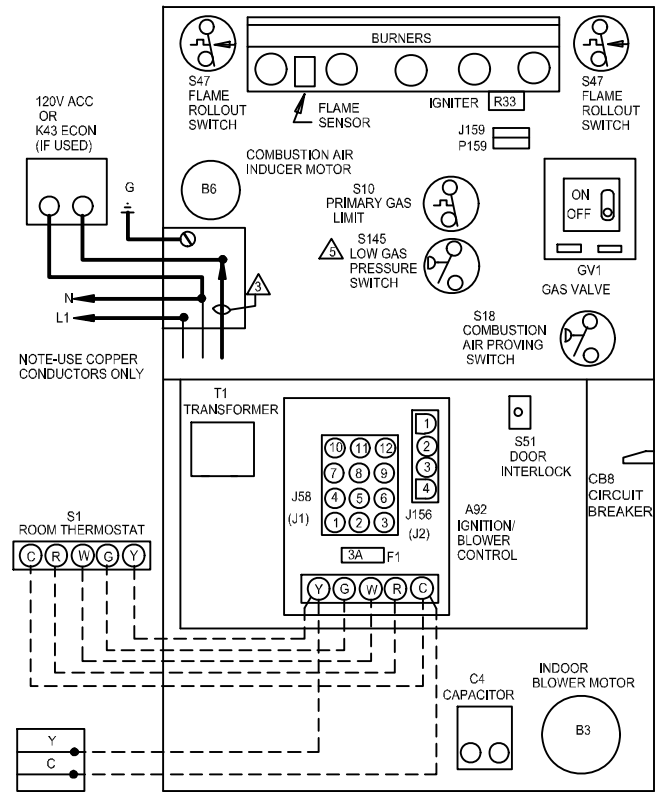
Precautions will help to avoid control exposure to electrostatic discharge by putting the furnace, the control and the technician at the same electrostatic potential.

Neutralize electrostatic charge by touching hand and all tools on an unpainted unit surface, such as the gas valve or blower deck, before performing any service procedure.

- 1 - Turn off electrical and gas supplies to the furnace.
- 2 - Remove the outer access panel, and the inner blower compartment door.
- 3 - Label the wires before disconnecting.
- 4 - Disconnect the wires and harness connectors from the existing control.
- 5 - Remove the integrated control from the control box.
- 6 - Position the replacement ignition control over the mounting holes, and carefully snap board in place.
- 7 - Restore electrical power and gas supplies to the furnace. Refer to the furnace unit installation instructions or sticker on the unit for start-up.



# TYPICAL EL195UH WIRING DIAGRAM



**BLOWER SPEED CHART**

UNIT	FACTORY CONNECTED SPEED TAPS				MOTOR SPEEDS AVAILABLE
	COOL	HEAT	FAN	PARK	
045P24R	BROWN	YELLOW	RED	BLACK	4
045P36R	BROWN	YELLOW	RED	BLACK	4
070P36B	BLACK	YELLOW	RED	BROWN	4
070P48B	BLACK	YELLOW	RED	BROWN	4
090P36C	BROWN	YELLOW	RED	BLACK	4
090P48C	BLACK	YELLOW	RED	BROWN	4
090P60C	BROWN	YELLOW	RED	BLACK	4
110P48C	BLACK	BROWN	RED	YELLOW	4
110P60C	BROWN	YELLOW	RED	BLACK	4
135P60D	BROWN	YELLOW	RED	BLACK	4

**BLOWER SPEED SELECTION**

HI ← → LO

SPEED TAPS	BLACK	BROWN	YELLOW	RED	4

**THERMOSTAT HEAT ANTICIPATION SETTINGS**

.65 AMP HONEYWELL VALVE

**JACKPLUG CHART**

J.P58	JACK/PLUG-BURNER CONTROL
J.P156	JACK/PLUG-INDUCER/IGNITER
J.P159	JACK/PLUG-IGNITER

**WARNING-**  
ELECTRIC SHOCK HAZARD, CAN CAUSE INJURY OR DEATH. UNIT MUST BE GROUNDED IN ACCORDANCE WITH NATIONAL AND LOCAL CODES

**NOTE-**  
IF ANY WIRE IN THIS APPLIANCE IS REPLACED, IT MUST BE REPLACED WITH WIRE OF LIKE SIZE, RATING, INSULATION THICKNESS AND TERMINATION

- ⚠ IMPORTANT- TO PREVENT MOTOR BURNOUT, NEVER CONNECT MORE THAN ONE LEAD TO ANY ONE CONNECTION
- ⚠ PARK TERMINALS ARE UNPOWERED TERMINALS. ALL UNUSED MOTOR LEADS MUST BE WIRED TO A PARK TERMINAL
- ⚠ FIELD SUPPLIED ACC. WIRE
- ⚠ DO NOT USE RED (LOW SPD) MOTOR LEAD FOR HEATING. LEAVE ON FAN TERMINAL FOR 090P36C AND 110P48C UNITS
- ⚠ S145 IS USED WITH HONEYWELL GAS VALVE WHEN APPLIED IN LP GAS UNITS

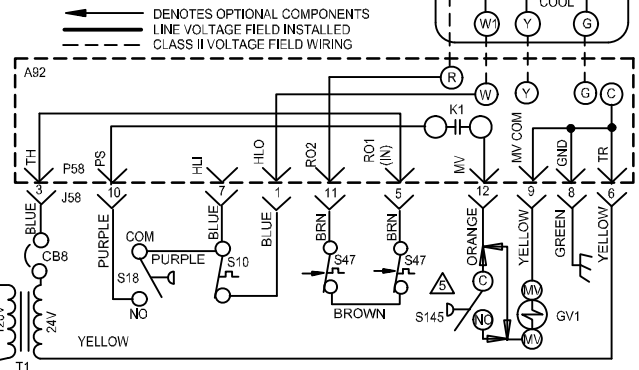
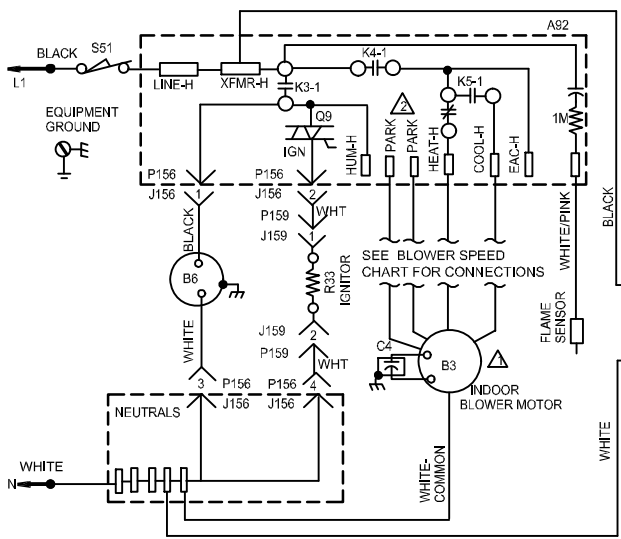
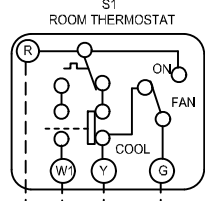
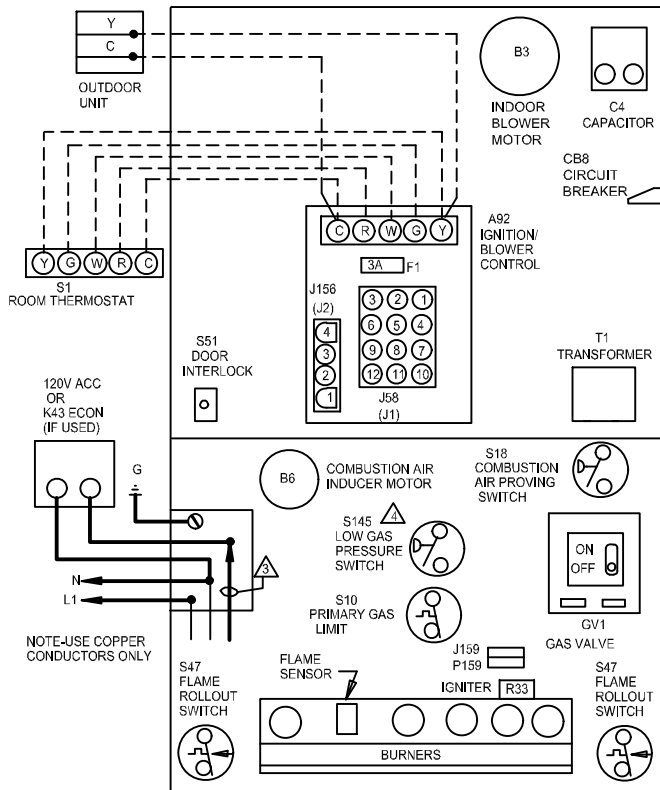


FIGURE 1

# TYPICAL EL195DF WIRING DIAGRAM



BLOWER SPEED CHART					
UNIT	FACTORY CONNECTED SPEED TAPS				MOTOR SPEEDS AVAIL.
	COOL	HEAT	FAN	PARK	
045P36B	BROWN	YELLOW	RED	BLACK	4
070P48B	BLACK	YELLOW	RED	BROWN	4
090P60C	BLACK	YELLOW	RED	BROWN	4
110P60C	BLACK	YELLOW	RED	BROWN	4

BLOWER SPEED SELECTION					
HI ← → LO					
SPEED TAPS	BLACK	BROWN	YELLOW	RED	4

### THERMOSTAT HEAT ANTICIPATION SETTINGS

.65 AMP HONEYWELL VALVE

JACKPLUG CHART	
J.P58	JACK/PLUG-BURNER CONTROL
J.P156	JACK/PLUG-INDUCER/IGNITER
J.P159	JACK/PLUG-IGNITER

**WARNING-**  
ELECTRIC SHOCK HAZARD. CAN CAUSE INJURY OR DEATH. UNIT MUST BE GROUNDED IN ACCORDANCE WITH NATIONAL AND LOCAL CODES

**NOTE-**  
IF ANY WIRE IN THIS APPLIANCE IS REPLACED, IT MUST BE REPLACED WITH WIRE OF LIKE SIZE, RATING, INSULATION THICKNESS AND TERMINATION

- ⚠ IMPORTANT- TO PREVENT MOTOR BURNOUT, NEVER CONNECT MORE THAN ONE LEAD TO ANY ONE CONNECTION
- ⚠ PARK TERMINALS ARE UNPOWERED TERMINALS. ALL UNUSED MOTOR LEADS MUST BE WIRED TO A PARK TERMINAL
- ⚠ FIELD SUPPLIED ACC. WIRE
- ⚠ S145 IS USED WITH HONEYWELL GAS VALVE WHEN APPLIED IN LP GAS UNITS

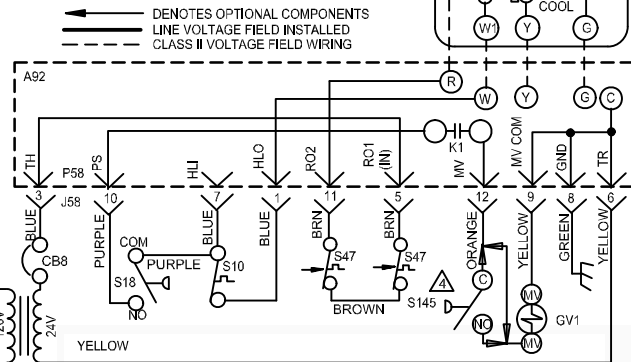
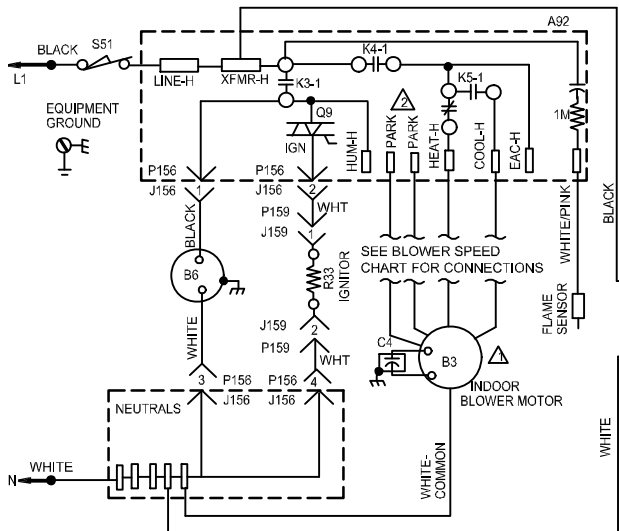
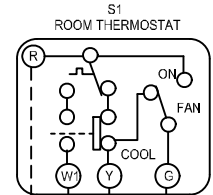


FIGURE 2

