



©2020

# GAS UNITS KITS & ACCESSORIES

508047-02  
08/ 2020  
Supersedes 508047-01

## BLOWER MOTOR DRIVE REPLACEMENT KIT

### INSTALLATION INSTRUCTION FOR BLOWER MOTOR DRIVE REPLACEMENT KIT (20S10) USED WITH EL296V, SL280V & SLP99V UNITS EQUIPPED WITH ½ HP MOTORS

#### **⚠ WARNING**

Improper installation, adjustment, alteration, service or maintenance can cause property damage, personal injury or loss of life. Installation and service must be performed by a licensed professional HVAC installer (or equivalent), service agency or the gas supplier.

#### **⚠ CAUTION**

As with any mechanical equipment, contact with sharp sheet metal edges can result in personal injury. Take care while handling this equipment and wear gloves and protective clothing.

#### Shipping and Packing List

- 1 - Replacement blower motor drive - ½ HP

#### Application

This blower motor drive replacement kit is used with EL296V, SL280V and SLP99V units equipped with ½ HP motors.

All replacement blower drives look alike however, each drive is factory-programmed to be used with a specific motor. It is very important to make sure that you use the correct replacement motor drive. **USE OF THE WRONG MOTOR DRIVE RESULT IN UNEXPECTED UNIT OPERATION.** Refer to table 1 to ensure that you are matching the correct replacement motor drive with the motor in your unit.

TABLE 1

Unit	Blower Drive Kit	Kit Number
EL296V, SL280V, SLP99V	20S10	620616-01

#### Installation

#### **⚠ CAUTION**

##### SHOCK HAZARD

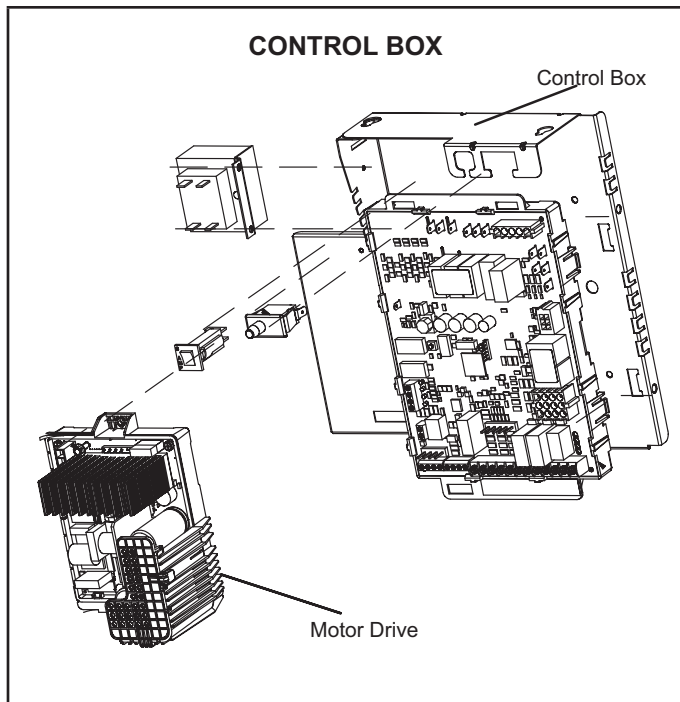
If the LED on the blower drive is blinking, the capacitor is charged. Do not remove blower drive until the LED stops blinking.

- 1 - Turn off power to the furnace and remove access panel.
- 2 - Removed pin connector harnesses from the current drive. (figure 2 ) and the mounting screw from the control box. Set mounting screw aside for replacement drive.
- 3 - Install replacement motor drive with the same mounting screw and pin connector harnesses.
- 4 - Return power to the furnace and check blower drive operation codes table 2.

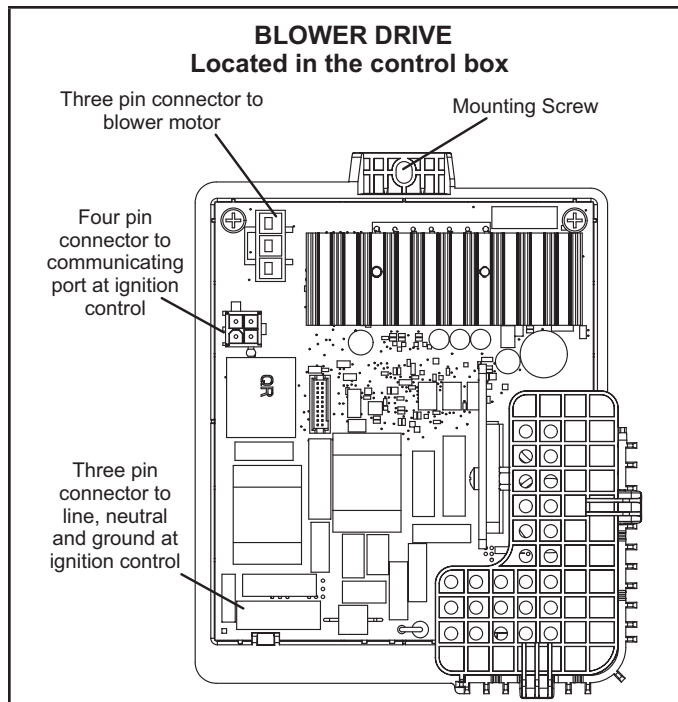
TABLE 2  
Blower Drive LEDs

Led	Meaning
1 short blink	Normal Heartbeat
2 short blinks	Drive Fault (replace Drive)
3 short blinks	
4 short blinks	
5 short blinks	Temporary Fault
1 long blink + 1 short blink	
1 long blink + 2 short blinks	
1 long blink + 3 short blinks	





**Figure 1**



**Figure 2**