



©2021

GAS UNITS KITS & ACCESSORIES

508194-01
06 / 2021

BLOWER MOTOR DRIVE REPLACEMENT KIT

INSTALLATION INSTRUCTION FOR BLOWER MOTOR DRIVE REPLACEMENT KIT (22L24) USED WITH EL296V, SL280V & SLP99V UNITS EQUIPPED WITH ½ HP MOTORS

⚠ WARNING

Improper installation, adjustment, alteration, service or maintenance can cause property damage, personal injury or loss of life. Installation and service must be performed by a licensed professional HVAC installer (or equivalent), service agency or the gas supplier.

⚠ CAUTION

As with any mechanical equipment, contact with sharp sheet metal edges can result in personal injury. Take care while handling this equipment and wear gloves and protective clothing.

Shipping and Packing List

- 1 - Replacement blower motor drive - ½ HP

Application

This blower motor drive replacement kit is used with EL296V, SL280V and SLP99V units equipped with ½ HP motors.

All replacement blower drives look alike however, each drive is factory-programmed to be used with a specific motor. It is very important to make sure that you use the correct replacement motor drive. **USE OF THE WRONG MOTOR DRIVE RESULT IN UNEXPECTED UNIT OPERATION.** Refer to table 1 to ensure that you are matching the correct replacement motor drive with the motor in your unit.

TABLE 1

| Unit | Blower Drive Kit | Kit Number |
|------------------------------|------------------|------------|
| EL296V, SL280V, SLP99V | 22L24 | 620616-02 |

Installation

⚠ CAUTION

SHOCK HAZARD

If the LED on the blower drive is blinking, the capacitor is charged. Do not remove blower drive until the LED stops blinking.

- 1 - Turn off power to the furnace and remove access panel.
- 2 - Removed pin connector harnesses from the current drive. (figure 2) and the mounting screw from the control box. Set mounting screw aside for replacement drive.
- 3 - Install replacement motor drive with the same mounting screw and pin connector harnesses.
- 4 - Return power to the furnace and check blower drive operation codes table 2.

TABLE 2
Blower Drive LEDs

| Led | Meaning |
|-------------------------------|--------------------------------|
| 1 short blink | Normal Heartbeat |
| 2 short blinks | Drive Fault (replace Drive) |
| 3 short blinks | |
| 4 short blinks | |
| 5 short blinks | Temporary Fault |
| 1 long blink + 1 short blink | |
| 1 long blink + 2 short blinks | |
| 1 long blink + 3 short blinks | |



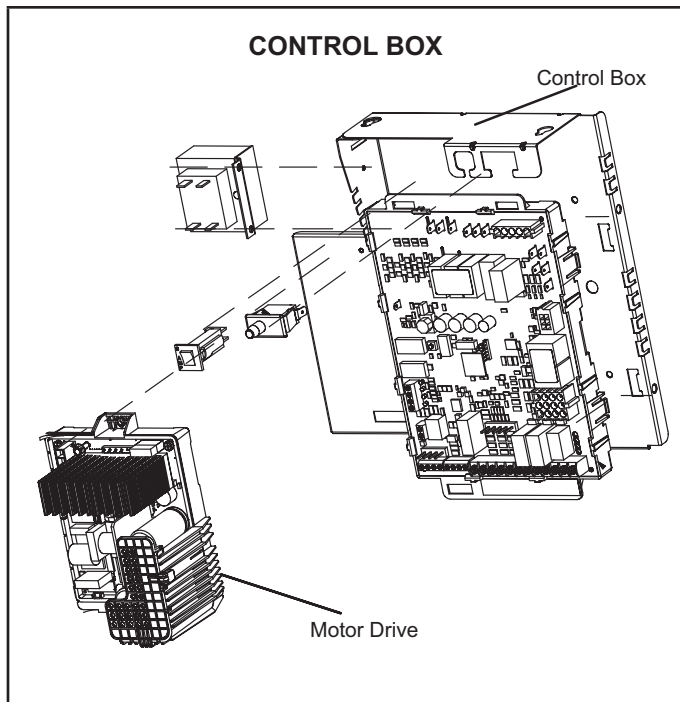


Figure 1

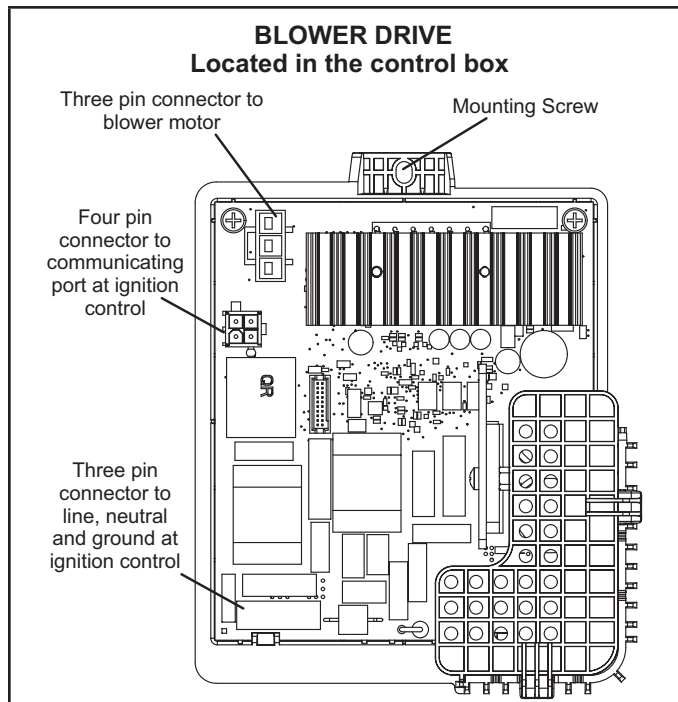


Figure 2