



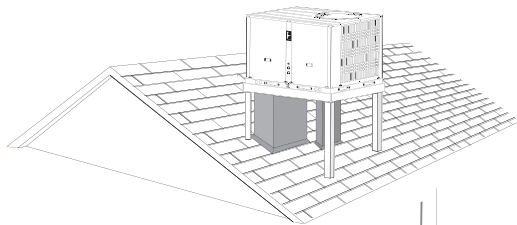
PRODUCT SPECIFICATIONS

Bulletin No. 490130
November 2008

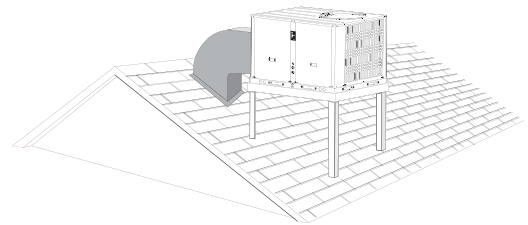


10.5, 14, 17.6 kW

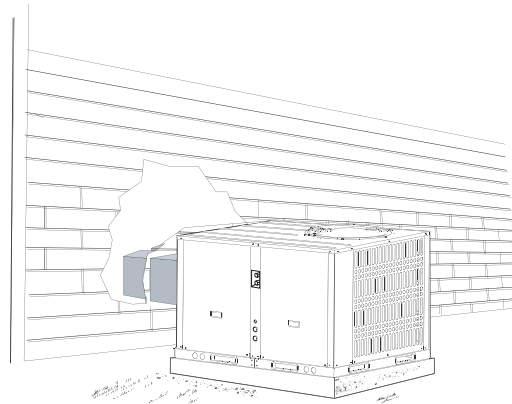
Typical Applications



Rooftop Installation
(Bottom Air)

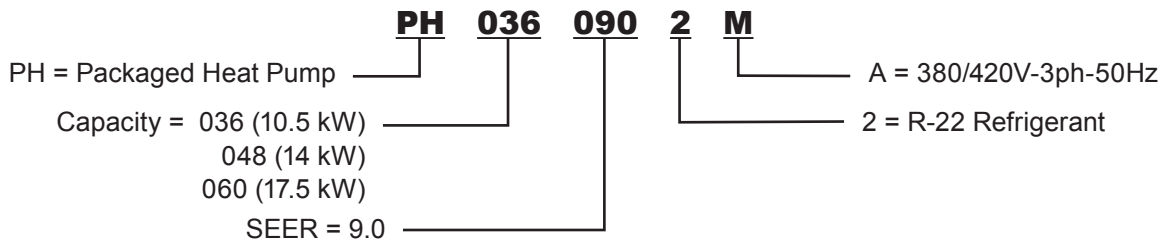


Rooftop Installation
(End Air)



Ground Level Installation

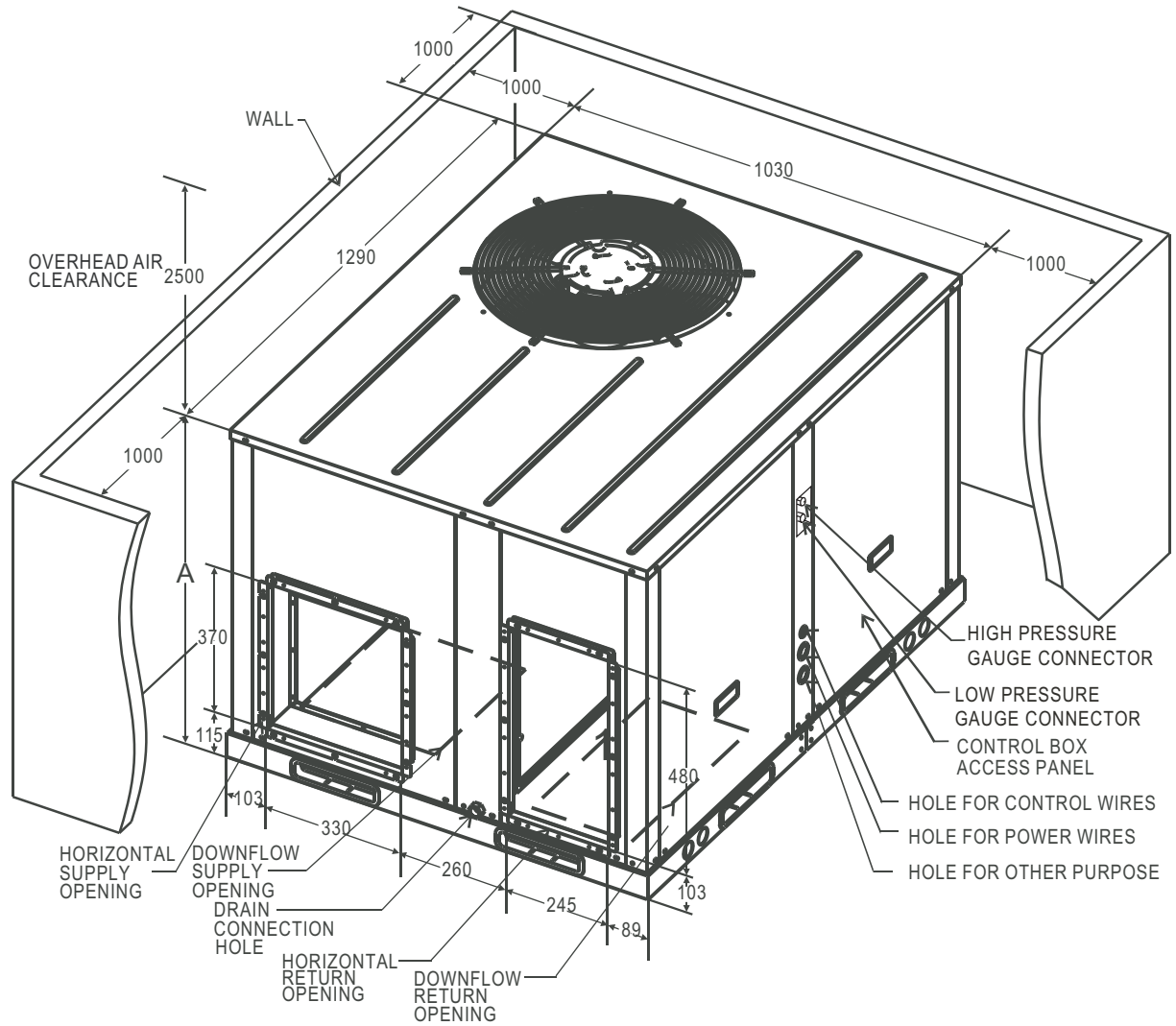
MODEL NUMBER IDENTIFICATION



SPECIFICATIONS

Model Number		PH0360902M	PH0480902M	PH0600902M
Power supply - V-Ph-Hz		380-415~3-50	380-415~3-50	380-415~3-50
Cooling	Capacity (Btuh)	36 000	48 000	60 000
	Input (W)	4400	5500	6500
	Rated current (A)	7.7	9.4	11
Heating	Capacity (Btuh)	39 600	52 800	66 000
	Input (W)	3700	4500	5700
	Rated current (A)	6.8	8.1	9.8
Maximum input consumption (W)		5500	7000	8200
Maximum current (A)		9.2	12	14.6
Starting current (A)		15	18	20
Compressor	Type	Scroll	Scroll	Scroll
	Capacity (Btuh)	39 579	49 474	60 392
	Input (W)	3800	4450	5450
	Rated current (RLA)	6.8	7.9	9.3
	Locked rotor Amp (LRA)	48	52	66
	Thermal protector	Internal	Internal	Internal
	Capacitor (uF)	—	—	—
	Refrigerant oil (ml)	1700	1700	1700
Indoor fan motor	Type	Centrifugal	Centrifugal	Centrifugal
	Input (W)	650±10%	860±10%	860±10%
	Capacitor (uF)	12uF / 450V	15uF / 370-450V	15uF / 370-450V
	Speed (hi/lo) (rev/min)	1000/850	980/810	980/810
Indoor coil	Number of rows (mm)	3	3	3
	Tube pitch (a) x row pitch (b) (mm)	25.4 x 22	25.4 x 22	25.4X22
	Fin spacing (mm)	1.7	1.7	1.7
	Fin type (code)	Hydrophilic aluminium	Hydrophilic aluminium	Hydrophilic aluminium
	Tube outside diameter (mm) and type	Φ9.53 innergroove tube	Φ9.53 innergroove tube	Φ9.53 innergroove tube
	Coil length x height x width (mm)	547 x 508 x 66	547 x 711.2 x 66	547 x 711.2 x 66
	Number of circuits	5	8	8
Indoor air flow (Hi) (m3/h)		1700	2900	2900
Indoor external static pressure (Hi) (Pa)		40	50	50
Outdoor fan motor	Input	270±10%	270±10%	255±10%
	Capacitor (uF)	12uF/450V	12uF/450V	12uF/450V
	Speed (rev/min)	850±30	850±30	930±30
Outdoor coil	Number of rows	2	2	2
	Tube pitch (a) x row pitch (b) (mm)	25.4 x 22	25.4 x 22	25.4 x 22
	Fin spacing (mm)	1.7	1.7	1.7
	Fin type (code)	Hydrophilic aluminium	Hydrophilic aluminium	Hydrophilic aluminium
	Tube outside diameter (mm) and type	Φ9.53 innergroove tube	Φ9.53 innergroove tube	Φ9.53 innergroove tube
	Coil length x height x width (mm)	1476 x 558.8 x 44	1476 x 558.8 x 44	1476 x 558.8 x 44
	Number of circuits	2	8	8
Outdoor air flow (m3/h)		5400	5400	5700
Outdoor noise level (dBA)		63.2	62.4	63.3
Unit	Dimensions (W x H x D) (mm)	1290 x 630 x 1030	1290 x 630 x 1030	1290 x 630 x 1030
	Packaging (W x H x D) (mm)	1325 x 665 x 1085	1325 x 665 x 1085	1325 x 665 x 1085
	Net/Gross weight (kg)	160/162	197/200	197/200
Refrigerant type / Charge (g)		R-22 / 2700	R-22 / 3300	R-22 / 3600
Throttle type		Orifice	Orifice	Orifice
Design pressure		2.8/1.2	2.8/1.2	2.8/1.2
Connection wiring - Power Wiring		2.0 x 5	2.0 x 5	2.0 x 5
Controller		Thermostat controller	Thermostat controller	Thermostat controller
Operating temperature (°C)		17-30	17-30	17-30
Ambient temperature (°C)		18-43	18-43	18-43

DIMENSIONS AND CLEARANCES - MM



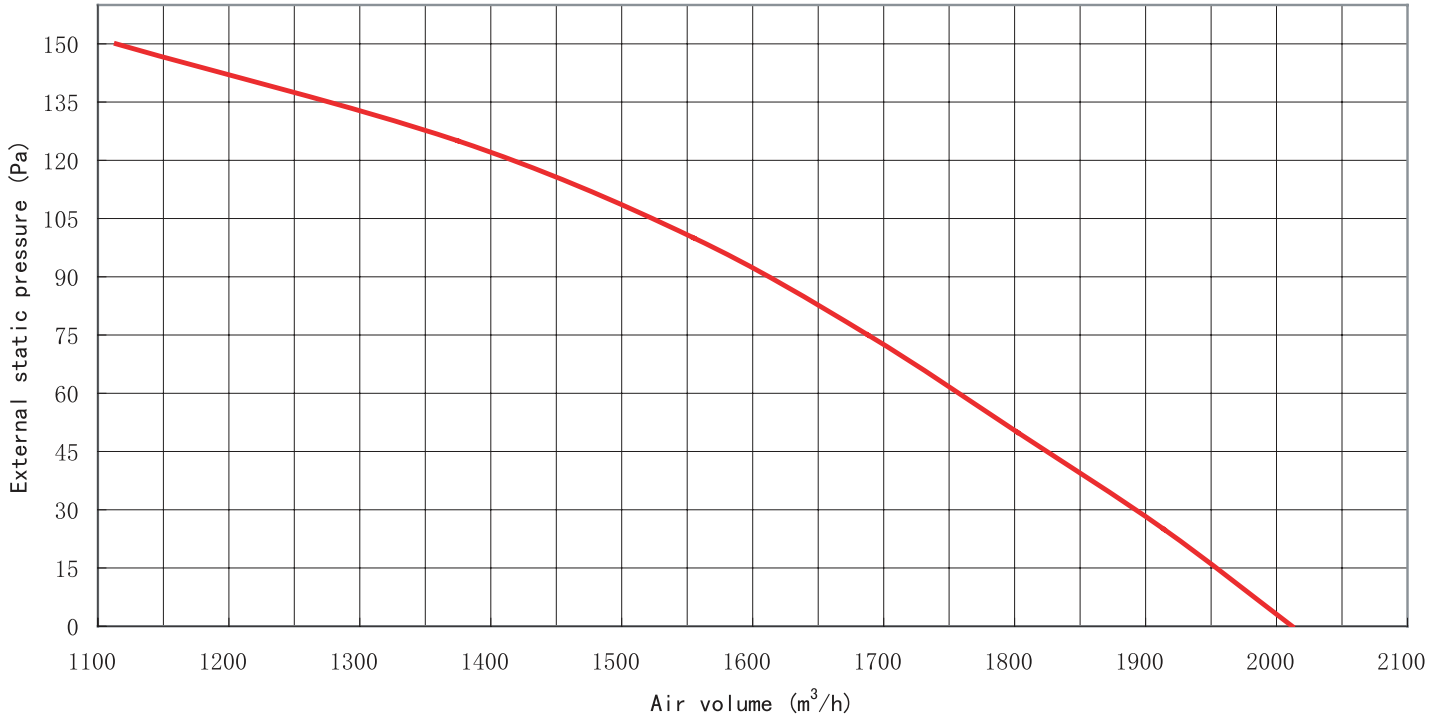
Model Number	A
PH0360902M	630
PH0480902M	830
PH0600902M	

ELECTRICAL DATA

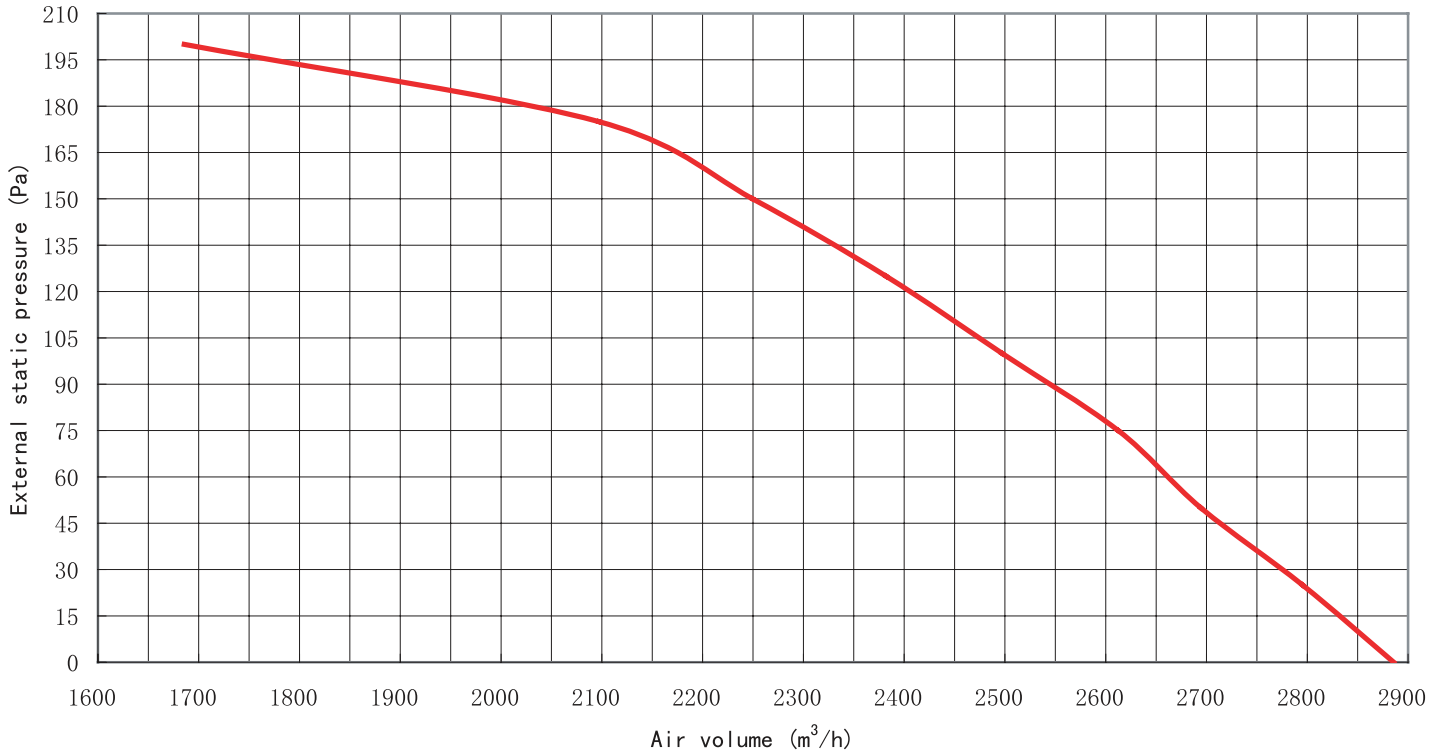
Model Number	PH0360902M Cooling / Heating	PH0480902M Cooling / Heating	PH0600902M Cooling / Heating
Circuit Breaker Fuse (A)	30 / 25	25 / 20	20 / 20
Power Wiring (mm)	5 x 4.0	5 x 4.0	5 x 4.0

BLOWER DATA

PH0360902M



PH0480902M, PH0600902M



NOTE - Due to Lennox' ongoing commitment to quality, Specifications, Ratings and Dimensions subject to change without notice and without incurring liability. Improper installation, adjustment, alteration, service or maintenance can cause property damage or personal injury. Installation and service must be performed by a qualified installer and servicing agency.