



## GAS KITS & ACCESSORIES

622803-01  
11-19-2020

### ADDENDUM FOR CONDENSATE TRAP REPLACEMENT KIT INSTRUCTION 507130-01

#### **⚠ IMPORTANT**

**CPVC and PVC, or All Purpose Cement is required to complete the installation of this kit.**

#### **⚠ WARNING**

**Failure to use the proper cement can result in property damage, personal injury or loss of life.**

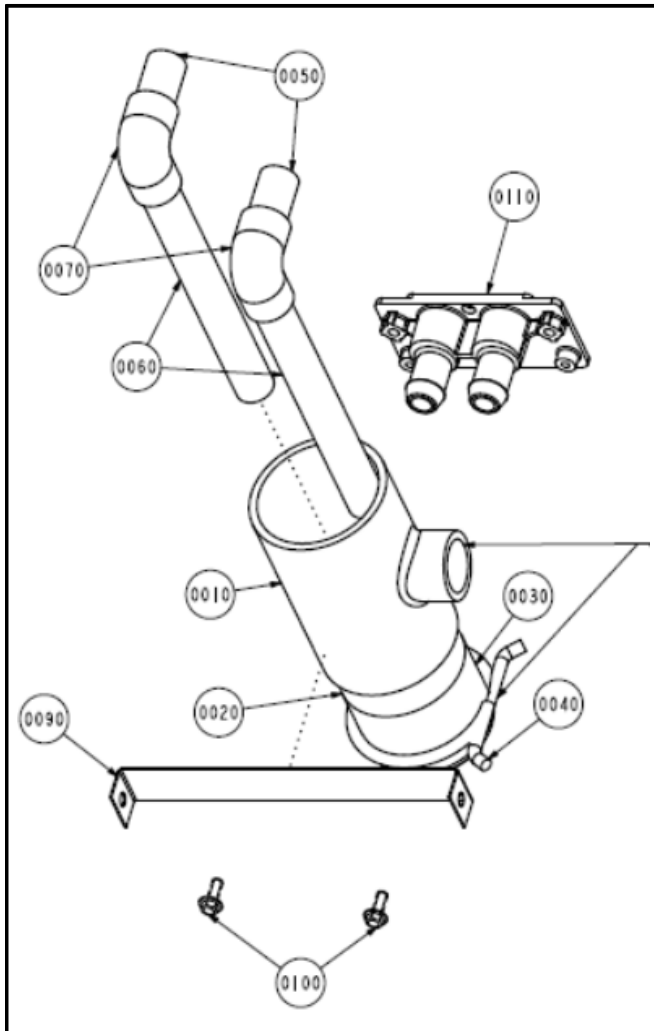


FIGURE 1

#### **Application**

Condensate trap replacement kit (10C90) is used with G41UF, G43UF, G51MP, G61MP, G61MPV and G71MPP units installed in upflow and downflow applications. For G41, G43, G51MP, G61MP and G61MPV in horizontal applications use kit 61M35. For G71MPP units in horizontal applications use kit 39W98.

Use **CPVC** or All Purpose Cement and attach items 0050 and 0060 ½" pipe into item 0070 ½" elbows. Use **PVC** or All Purpose Cement and attach item 0020 2" pipe into item 0010 2" T pipe (creating a trap assembly). See figure 1 and follow steps 1 through 4 for both CPCV pipe and PVC pipe. Figure 2 shows final assembled components.

All cementing of joints should be done according to the specifications outlined in ASTM D 2855.

#### **Joint Cementing Procedure**

#### **⚠ WARNING**

**Improper installation, adjustment, alteration, service or maintenance can cause property damage, personal injury or loss of life. Installation and service must be performed by a licensed professional installer (or equivalent), service agency or the gas supplier.**

#### **⚠ DANGER**

##### **DANGER OF EXPLOSION!**

**Fumes from solvent cement may ignite during system check. Allow fumes to dissipate for at least 5 minutes before placing unit into operation.**

#### **⚠ CAUTION**

**Solvent cements for plastic pipe are flammable liquids and should be kept away from all sources of ignition. Do not use excessive amounts of solvent cement when making joints. Good ventilation should be maintained to reduce fire hazard and to minimize breathing of solvent vapors. Avoid contact of cement with skin and eyes.**

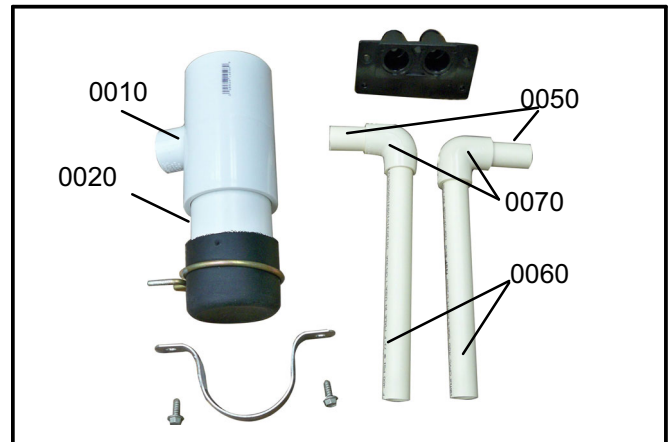
- 1- Uniformly apply a liberal coat of primer inside the socket surface of the fitting.
- 2- Promptly apply solvent cement to end of pipe and inside socket surface of fitting. Cement should be applied lightly but uniformly to inside of socket. Take care to keep excess cement out of socket. Apply second coat to end of pipe.

**NOTE** - Time is critical at this stage. Do not allow primer to dry before applying cement.

- 3- Immediately after applying last coat of cement to pipe, and while both inside socket surface and end of pipe are wet with cement, forcefully insert end of pipe into socket until it bottoms out. Turn pipe 1/4 turn during assembly (but not after pipe is fully inserted) to distribute cement evenly.

**NOTE** - Assembly should be completed within 20 seconds after last application of cement. Hammer blows should not be used when inserting pipe.

- 4- Continue with kit instruction 507130-01.



**FIGURE 2**