



AFGP12B

Gas/Electric Package Unit



Features

- Shipped for horizontal applications; easily converted to downshot
- Side-by-side horizontal discharge
- Standard thermostatic expansion valve
- Crimp-Tite™ weld-free aluminized steel heat exchanger for reliable, efficient operation
- Quiet, efficient Copeland® compliant scroll compressors are safeguarded by internal pressure relief valves and inherent thermal protection
- Electrical connections on side and bottom are easily accessible
- Galvanized steel base rails improve stability for lifting
- Sensitive electrical components are protected by a unique slide-out door that provides easy access
- Electrical panels are pre-wired
- Service valve gauge ports are positioned for more access room
- Easy-to-read LED diagnostics simplifies troubleshooting
- Internal pressure relief valves and inherent thermal protection protect against unit failure
- Direct-spark ignition system provides rapid, reliable warmth
- Permanently lubricated condenser fan motor eliminates annual maintenance
- High-quality condenser coil copper tubes with enhanced louvered fins provide maximum heat transfer

Efficiency:
12 SEER 80% AFUE

Warranty:
10-year limited—compressor
10-year limited—heat exchanger
5-year limited—components

Capacity:
2- to 5-ton cooling
50,000–125,000 Btu heating

AFGP12B Gas/Electric Package Unit

Unit Specifications

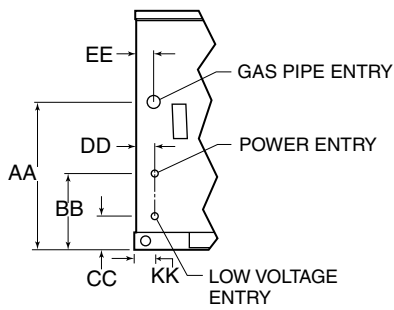
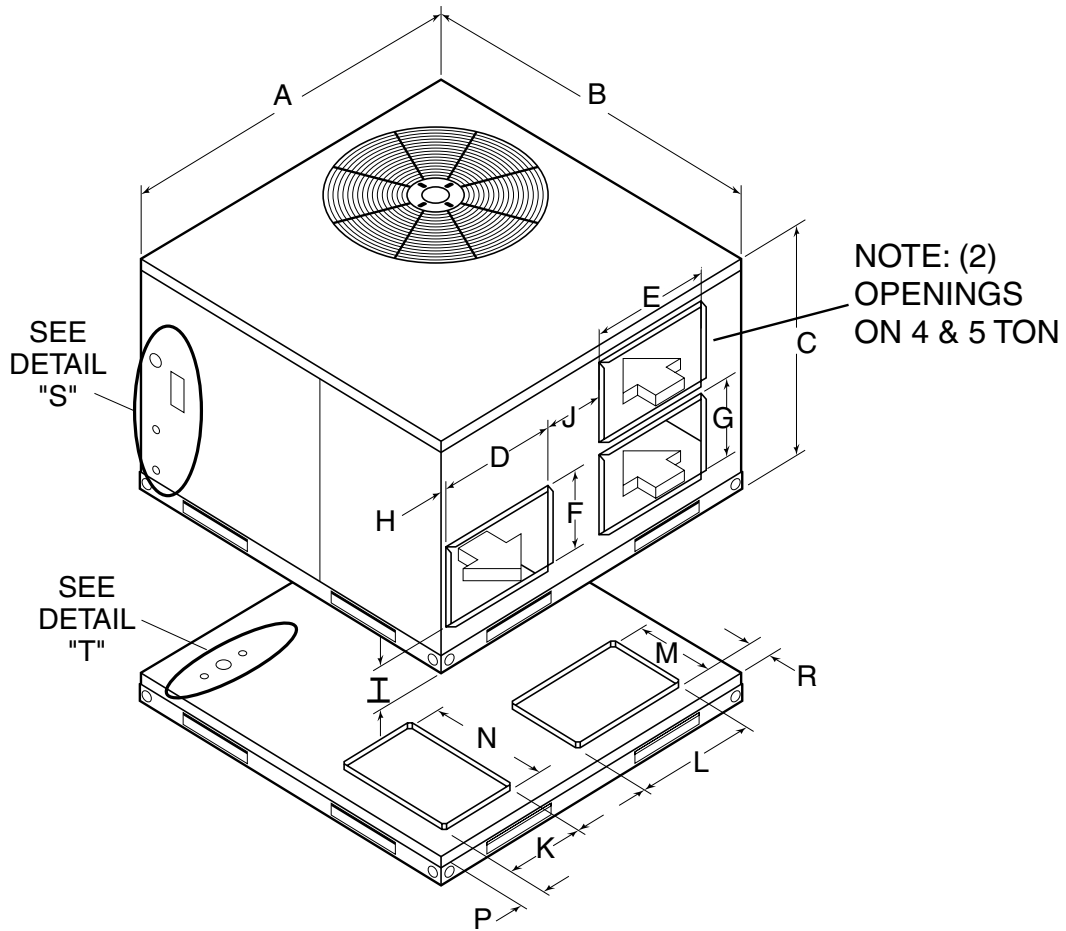
		AFGP12B24050	AFGP12B24075	AFGP12B30050	AFGP12B30075	AFGP12B36075	AFGP12B36100
Condenser Coil	Face Area (ft. ²)	8.96	8.96	8.96	8.96	8.96	8.96
	Face Area (m ²)	0.83	0.83	0.83	0.83	0.83	0.83
	No. of Rows	2	2	2	2	2	2
	Fins per Inch	20	20	20	20	20	20
Condenser Fan	Diameter (in.)	20"	20"	20"	20"	20"	20"
	No. of Blades	3	3	3	3	4	4
	RPM	1100	1100	1100	1100	1100	1100
Evaporator Coil	Face Area (ft. ²)	4.67	4.67	4.67	4.67	4.67	4.67
	Face Area (m ²)	0.43	0.43	0.43	0.43	0.43	0.43
	No. of Rows	2	2	3	3	3	3
	Fins per Inch	16	16	18	18	18	18
	Indoor Blower Wheel (DxW)	10" x 9"	10" x 9"	10" x 9"	10" x 9"	10" x 9"	10" x 9"
	Refrigerant Charge, R-22 (oz.)	88	88	88	88	98	98
	Unit Weight (lbs.)	400	410	405	415	420	430
Dimensions	Cabinet Width (A)	47-11/16"	47-11/16"	47-11/16"	47-11/16"	47-11/16"	47-11/16"
	Cabinet Depth (B)	47-11/16"	47-11/16"	47-11/16"	47-11/16"	47-11/16"	47-11/16"
	Height (C)	30-1/16"	30-1/16"	30-1/16"	30-1/16"	30-1/16"	30-1/16"
	Supply Opening Hor. (D x F)	16-1/16 x 10-9/16	16-1/16 x 10-9/16	16-1/16 x 10-9/16	16-1/16 x 10-9/16	16-1/16 x 10-9/16	16-1/16 x 10-9/16
	Return Opening Hor. (E x G)	16-1/16 x 10-9/16	16-1/16 x 10-9/16	16-1/16 x 10-9/16	16-1/16 x 10-9/16	16-1/16 x 10-9/16	16-1/16 x 10-9/16
	Side of Unit to Supply Opening, Hor. (H)	3/4 "	3/4 "	3/4 "	3/4 "	3/4 "	3/4 "
	Bottom of Unit to Supply & Return Openings, Hor. (I)	5-7/16"	5-7/16"	5-7/16"	5-7/16"	5-7/16"	5-7/16"
	Supply to Return Openings, Hor. (J)	8"	8"	8"	8"	8"	8"
	Supply Opening Downshot (K x N)	10-9/16 x 16-1/16"	10-9/16 x 16-1/16"	10-9/16 x 16-1/16"	10-9/16 x 16-1/16"	10-9/16 x 16-1/16"	10-9/16 x 16-1/16"
	Return Opening Downshot (L x M)	16-1/16 x 10-9/16"	16-1/16 x 10-9/16"	16-1/16 x 10-9/16"	16-1/16 x 10-9/16"	16-1/16 x 10-9/16"	16-1/16 x 10-9/16"
	Side of Unit to Supply Opening Downshot (P)	3-5/8"	3-5/8"	3-5/8"	3-5/8"	3-5/8"	3-5/8"
	Back Edge to Supply & Return Downshot (R)	3-1/4"	3-1/4"	3-1/4"	3-1/4"	3-1/4"	3-1/4"
	Gas Pipe Entry From Bottom Hor. (AA)	18-9/16"	18-9/16"	18-9/16"	18-9/16"	18-9/16"	18-9/16"
	Power Entry From Bottom Hor. (BB)	9-1/2"	9-1/2"	9-1/2"	9-1/2"	9-1/2"	9-1/2"
	Low Voltage Entry From Bottom Hor. (CC)	4-1/4"	4-1/4"	4-1/4"	4-1/4"	4-1/4"	4-1/4"
	Electrical Entry From Front Hor. (DD)	2-1/2"	2-1/2"	2-1/2"	2-1/2"	2-1/2"	2-1/2"
	Gas Pipe Entry From Front Hor. (EE)	2-3/8"	2-3/8"	2-3/8"	2-3/8"	2-3/8"	2-3/8"
	Front Edge of Basepan Bottom Gas Electrical Entry (FF)	5"	5"	5"	5"	5"	5"
	Right Edge of Basepan Bottom Power Entry (GG)	5"	5"	5"	5"	5"	5"
	Right Edge of Basepan Bottom Gas Entry (HH)	8"	8"	8"	8"	8"	8"
Right Edge of Basepan Bottom Low Voltage Entry (JJ)	11"	11"	11"	11"	11"	11"	

AFGP12B Gas/Electric Package Unit

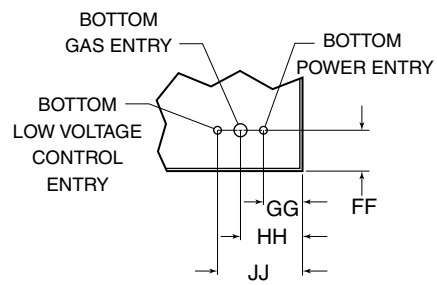
Unit Specifications

		AFGP12B42075	AFGP12B42100	AFGP12B48100	AFGP12B48125	AFGP12B60100	AFGP12B60125
Condenser Coil	Face Area (ft. ²)	8.96	8.96	11.97	11.97	16.99	16.99
	Face Area (m ²)	0.83	0.83	1.11	1.11	1.58	1.58
	No. of Rows	2	2	2	2	2	2
	Fins per Inch	20	20	20	20	20	20
Condenser Fan	Diameter (in.)	20"	20"	22"	22"	22"	22"
	No. of Blades	4	4	3	3	3	3
	RPM	1100	1100	1100	1100	1100	1100
Evaporator Coil	Face Area (ft. ²)	4.67	4.67	6.00	6.00	6.00	6.00
	Face Area (m ²)	0.43	0.43	0.56	0.56	0.56	0.56
	No. of Rows	3	3	3	3	3	3
	Fins per Inch	18	18	18	18	18	18
	Indoor Blower Wheel (DxW)	10" x 9"	10" x 9"	10" x 9"	10" x 10"	10" x 9"	10" x 10"
	Refrigerant Charge, R-22 (oz.)	106	106	126	126	172	172
	Unit Weight (lbs.)	425	435	500	510	540	550
Dimensions	Cabinet Width (A)	47-11/16"	47-11/16"	55-7/16"	55-7/16"	55-7/16"	55-7/16"
	Cabinet Depth (B)	47-11/16"	47-11/16"	47-11/16"	47-11/16"	47-11/16"	47-11/16"
	Height (C)	30-1/16"	30-1/16"	36-1/16"	36-1/16"	36-1/16"	36-1/16"
	Supply Opening Hor. (D x F)	16-1/16 x 10-9/16	16-1/16 x 10-9/16	19-9/16 x 14-1/16	19-9/16 x 14-1/16	19-9/16 x 14-1/16	19-9/16 x 14-1/16
	Return Opening Hor. (E x G)	16-1/16 x 10-9/16	16-1/16 x 10-9/16	22-1/16 x 10-9/16 (2) Openings	22-1/16 x 10-9/16 (2) Openings	22-1/16 x 10-9/16 (2) Openings	22-1/16 x 10-9/16 (2) Openings
	Side of Unit to Supply Opening, Hor. (H)	3/4 "	3/4 "	3/4 "	3/4 "	3/4 "	3/4 "
	Bottom of Unit to Supply & Return Openings, Hor. (I)	5-7/16"	5-7/16"	5-7/16"	5-7/16"	5-7/16"	5-7/16"
	Supply to Return Openings, Hor. (J)	8"	8"	8"	8"	8"	8"
	Supply Opening Downshot (K x N)	10-9/16 x 16-1/16"	10-9/16 x 16-1/16"	14-1/16 x 19-9/16"	14-1/16 x 19-9/16"	14-1/16 x 19-9/16"	14-1/16 x 19-9/16"
	Return Opening Downshot (L x M)	16-1/16 x 10-9/16"	16-1/16 x 10-9/16"	22-1/16 x 10-9/16"	22-1/16 x 10-9/16"	22-1/16 x 10-9/16"	22-1/16 x 10-9/16"
	Side of Unit to Supply Opening Downshot (P)	3-5/8"	3-5/8"	3-5/8"	3-5/8"	3-5/8"	3-5/8"
	Back Edge to Supply & Return Downshot (R)	3-1/4"	3-1/4"	3-1/4"	3-1/4"	3-1/4"	3-1/4"
	Gas Pipe Entry From Bottom Hor. (AA)	18-9/16"	18-9/16"	24-9/16"	24-9/16"	24-9/16"	24-9/16"
	Power Entry From Bottom Hor. (BB)	9-1/2"	9-1/2"	15-1/2"	15-1/2"	15-1/2"	15-1/2"
	Low Voltage Entry From Bottom Hor. (CC)	4-1/4"	4-1/4"	4-1/4"	4-1/4"	4-1/4"	4-1/4"
	Electrical Entry From Front Hor. (DD)	2-1/2"	2-1/2"	2-1/2"	2-1/2"	2-1/2"	2-1/2"
	Gas Pipe Entry From Front Hor. (EE)	2-3/8"	2-3/8"	2-3/8"	2-3/8"	2-3/8"	2-3/8"
	Front Edge of Basepan Bottom Gas Electrical Entry (FF)	5"	5"	5"	5"	5"	5"
	Right Edge of Basepan Bottom Power Entry (GG)	5"	5"	5"	5"	5"	5"
	Right Edge of Basepan Bottom Gas Entry (HH)	8"	8"	8"	8"	8"	8"
Right Edge of Basepan Bottom Low Voltage Entry (JJ)	11"	11"	11"	11"	11"	11"	

AFGP12B Gas/Electric Package Unit



DETAIL "S"
SIDE VIEW FROM RIGHT SIDE OF UNIT



DETAIL "T"
DETAIL VIEW FROM BASE OF UNIT

AFGP12B Gas/Electric Package Unit

Electrical Data

		AFGP12B24050	AFGP12B24075	AFGP12B30050	AFGP12B30075	AFGP12B36075	AFGP12B36100
Unit	Rated Voltage (Vac)	208/230	208/230	208/230	208/230	208/230	208/230
	Phase	1	1	1	1	1	1
	Frequency (Hz.)	60	60	60	60	60	60
	Approved Voltage Range	197-253	197-253	197-253	197-253	197-253	197-253
	Minimum Circuit Amps	15.1	15.1	19.6	19.6	22.5	22.5
	Maximum Fuse ¹	25	25	30	30	35	35
Com-pressor	Rated Load Amps	11.4	11.4	15.0	15.0	17.9	17.9
	Locked Rotor Amps	56	56	73	73	88	88
Outdoor Fan	Full Load Amps	0.7	0.7	0.7	0.7	1.7	1.7
	Horsepower	1/10	1/10	1/10	1/10	1/4	1/4
Indoor Blower	Full Load Amps	3.9	3.9	3.9	3.9	3.9	3.9
	Horsepower	1/2	1/2	1/2	1/2	1/2	1/2
Producer Motor	Full Load Amps	0.7	0.7	0.7	0.7	0.7	0.7
	Horsepower	1/25	1/25	1/25	1/25	1/25	1/25

		AFGP12B42075	AFGP12B42100	AFGP12B48100	AFGP12B48125	AFGP12B60100	AFGP12B60125
Unit	Rated Voltage (Vac)	208/230	208/230	208/230	208/230	208/230	208/230
	Phase	1	1	1	1	1	1
	Frequency (Hz.)	60	60	60	60	60	60
	Approved Voltage Range	197-253	197-253	197-253	197-253	197-253	197-253
	Minimum Circuit Amps	27.0	27.0	28.8	28.8	42.1	42.1
	Maximum Fuse ¹	45	45	50	50	70	70
Com-pressor	Rated Load Amps	20.0	20.0	21.4	21.4	32.1	32.1
	Locked Rotor Amps	104	104	137	137	169	169
Outdoor Fan	Full Load Amps	1.7	1.7	2.0	2.0	2.0	2.0
	Horsepower	1/4	1/4	1/3	1/3	1/3	1/3
Indoor Blower	Full Load Amps	3.9	3.9	5.0	5.0	5.0	5.0
	Horsepower	1/2	1/2	0.9	0.9	0.9	0.9
Producer Motor	Full Load Amps	0.7	0.7	0.7	0.7	0.7	0.7
	Horsepower	1/25	1/25	1/25	1/25	1/25	1/25

¹ Time delay fue/HACR Breaker

NOTE: All models are also available with Low-NOx construction (SG12BX24050, ETC.) designated by the "X" in the model number.

AFGP12B Gas/Electric Package Unit

Performance Data

		AFGP12B24050	AFGP12B24075	AFGP12B30050	AFGP12B30075	AFGP12B36075	AFGP12B36100
Cooling	Cooling Capacity ²	23,000	23,000	30,200	30,200	35,200	35,200
	SEER ²	12.00	12.00	12.00	12.00	12.00	12.00
	EER	10.00	10.00	10.15	10.15	9.90	9.90
	S/T	0.74	0.74	0.72	0.72	0.73	0.73
	CFM	800	800	1,000	1,000	1,250	1,250
	Speed Tap	Low	Low	Medium	Medium	Low	Low
Heating	Input (Btuh) ³	50,000	75,000	50,000	75,000	75,000	100,000
	Output (Btuh) ³	40,000	60,000	40,000	60,000	60,000	80,000
	AFUE	80%	80%	80%	80%	80%	80%
	Temp. Rise Range (°F)	45-85	45-85	45-85	45-85	45-85	45-85

		AFGP12B42075	AFGP12B42100	AFGP12B48100	AFGP12B48125	AFGP12B60100	AFGP12B60125
Cooling	Cooling Capacity ²	41,300	41,300	47,000	47,000	56,400	56,400
	SEER ²	12.00	12.00	12.00	12.00	12.00	12.00
	EER	9.90	9.90	9.89	9.89	9.78	9.78
	S/T	0.72	0.72	0.69	0.69	0.68	0.68
	CFM	1400	1400	1550	1550	1800	1800
	Speed Tap	Low	Low	Low	Medium	High	Medium
Heating	Input (Btuh) ³	75,000	100,000	100,000	125,000	100,000	125,000
	Output (Btuh) ³	60,000	80,000	80,000	100,000	80,000	100,000
	AFUE	80%	80%	80%	80%	80%	80%
	Temp. Rise Range (°F)	45-85	45-85	45-85	45-85	45-85	45-85

2 BX Low-NOx models heating input and output are reduced by 12%.

Airflow Data

Airflow (CFM) @ external static pressure (in w.c.)	AFGP12B24050, AFGP12B30050			AFGP12B24075, AFGP12B30075			AFGP12B36075, AFGP12B42075		
	Low	Medium	High	Low	Medium	High	Low	Medium	High
0.20	810	1010	1230	860	1130	1670	1440	1560	1650
0.40	730	910	1090	790	1080	1570	1340	1450	1530
0.60	610	770	940	720	970	1380	1200	1280	1370
0.80	470	610	750	620	830	1180	1010	1080	1190

Airflow (CFM) @ external static pressure (in w.c.)	AFGP12B36100, AFGP12B42100			AFGP12B48100, AFGP12B60100			AFGP12B48125, AFGP12B60125		
	Low	Medium	High	Low	Medium	High	Low	Medium	High
0.20	1440	1600	1740	1840	1890	2070	1750	1830	1910
0.40	1370	1500	1610	1710	1770	1870	1570	1640	1730
0.60	1270	1370	1460	1560	1610	1690	1410	1450	1560
0.80	1120	1200	1280	1370	1430	1480	1260	1280	1320

AFGP12B Gas/Electric Package Unit

Accessories

	AFGP12B24050	AFGP12B24075	AFGP12B30050	AFGP12B30075	AFGP12B36075	AFGP12B36100
High Pressure Switch	20442501	20442501	20442501	20442501	20442501	20442501
Low Pressure Switch	20442502	20442502	20442502	20442502	20442502	20442502
Short Cycle Protection	20442601	20442601	20442601	20442601	20442601	20442601
Hard Start Kit	20442707	20442707	20442707	20442707	20442707	20442707
Crank Case Heater Kit	20442803	20442803	20442803	20442803	20442803	20442803
Sound Blanket	20442901	20442901	20442901	20442901	20442903	20442903
Low Ambient Kit**	20442504	20442504	20442504	20442504	20442504	20442504
LP Conversion Kit**	20490601	20490601	20490601	20490601	20490601	20490601
High Altitude Kit**	20490701	20490701	20490701	20490701	20490701	20490701
Roof Curb	20490001	20490001	20490001	20490001	20490001	20490001
Manual Outside Air Damper	20490101	20490101	20490101	20490101	20490101	20490101
Motorized Outside Air Damper	20490201	20490201	20490201	20490201	20490201	20490201
Economizer	20490301	20490301	20490301	20490301	20490301	20490301
Round Duct Adapter	20490401	20490401	20490401	20490401	20490401	20490401
Filter Rack	20490501	20490501	20490501	20490501	20490501	20490501

	AFGP12B42075	AFGP12B42100	AFGP12B48100	AFGP12B48125	AFGP12B60100	AFGP12B60125
High Pressure Switch	20442501	20442501	20442501	20442501	20442501	20442501
Low Pressure Switch	20442502	20442502	20442502	20442502	20442502	20442502
Short Cycle Protection	20442601	20442601	20442601	20442601	20442601	20442601
Hard Start Kit	20442707	20442707	20442707	20442707	20442706	20442706
Crank Case Heater Kit	20442803	20442803	20442803	20442803	20442802	20442802
Sound Blanket	20442903	20442903	20442904	20442904	20442902	20442902
Low Ambient Kit**	20442504	20442504	20442504	20442504	20442504	20442504
LP Conversion Kit**	20490601	20490601	20490601	20490601	20490601	20490601
High Altitude Kit**	20490702	20490702	20490702	20490702	20490702	20490702
Roof Curb	20490001	20490001	20490002	20490002	20490002	20490002
Manual Outside Air Damper	20490101	20490101	20490102	20490102	20490102	20490102
Motorized Outside Air Damper	20490201	20490201	20490202	20490202	20490202	20490202
Economizer	20490301	20490301	20490302	20490302	20490302	20490302
Round Duct Adapter	20490401	20490401	20490402	20490402	20490402	20490402
Filter Rack	20490501	20490501	20490502	20490502	20490502	20490502

**These models are not for BX



2100 Lake Park Boulevard
Richardson, TX 75080
1.800.982.2333

www.aireflo-hvac.com



All models 208-230 volt/1-phase/60 Hz. 36/48/60 models also available in 208-230 volt/
3-phase/60 Hz. Certified in accordance with the ARI standard 210/240 certification program,
which is based on ARI standard 210/240.

47M28 (9/04)

© Copyright Lennox Industries, Inc., 2004

PC39303