



SUBMITTAL DATA  
 MODE **SELECTION BOX**  
**V8MSBB03**  
**VRF HEAT RECOVERY**

**Job:** \_\_\_\_\_

**Location:** \_\_\_\_\_

**Schedule No.:** \_\_\_\_\_

**System Designation:** \_\_\_\_\_

**Engineer:** \_\_\_\_\_

**Architect:** \_\_\_\_\_

**Date:** \_\_\_\_\_

**For:** Reference Approval Review Construction

**FEATURES**

Allows simultaneous heating and cooling of multiple zones on VRF Heat Recovery outdoor units.

- Brazed fittings for outdoor unit pipe connections
- Removable panels for ease of maintenance
- Flare fittings for indoor unit pipe connection
- Dedicated sub-cooling circuit for each port

**Product Warranty**

All covered components – One year limited warranty.

**SPECIFICATIONS**

Number of Ports	4
Maximum Indoor Units per Port	4
Maximum Capacity per Port (Btu/h)	54,000
Total Connected Capacity (Btu/h)	≤ 154,000

**ELECTRICAL DATA**

Power Supply (V/Hz/Φ)	208-230/60/1
-----------------------	--------------

**DIMENSIONS**

Unit Dimensions (in)	Height	9
	Width	23-5/8
	Depth	37-3/4

**PIPING CONNECTIONS**

Outdoor Unit (in)	Liquid Pipe	5/8
	H.P. Gas Pipe	7/8
	L.P. Gas Pipe	1-1/8
Indoor Unit (in)	Liquid Pipe	3/8
	Gas Pipe	5/8
Condensate drain connection (in)		1
Shipping Weight (lb)		69
Net Weight (lb)		88

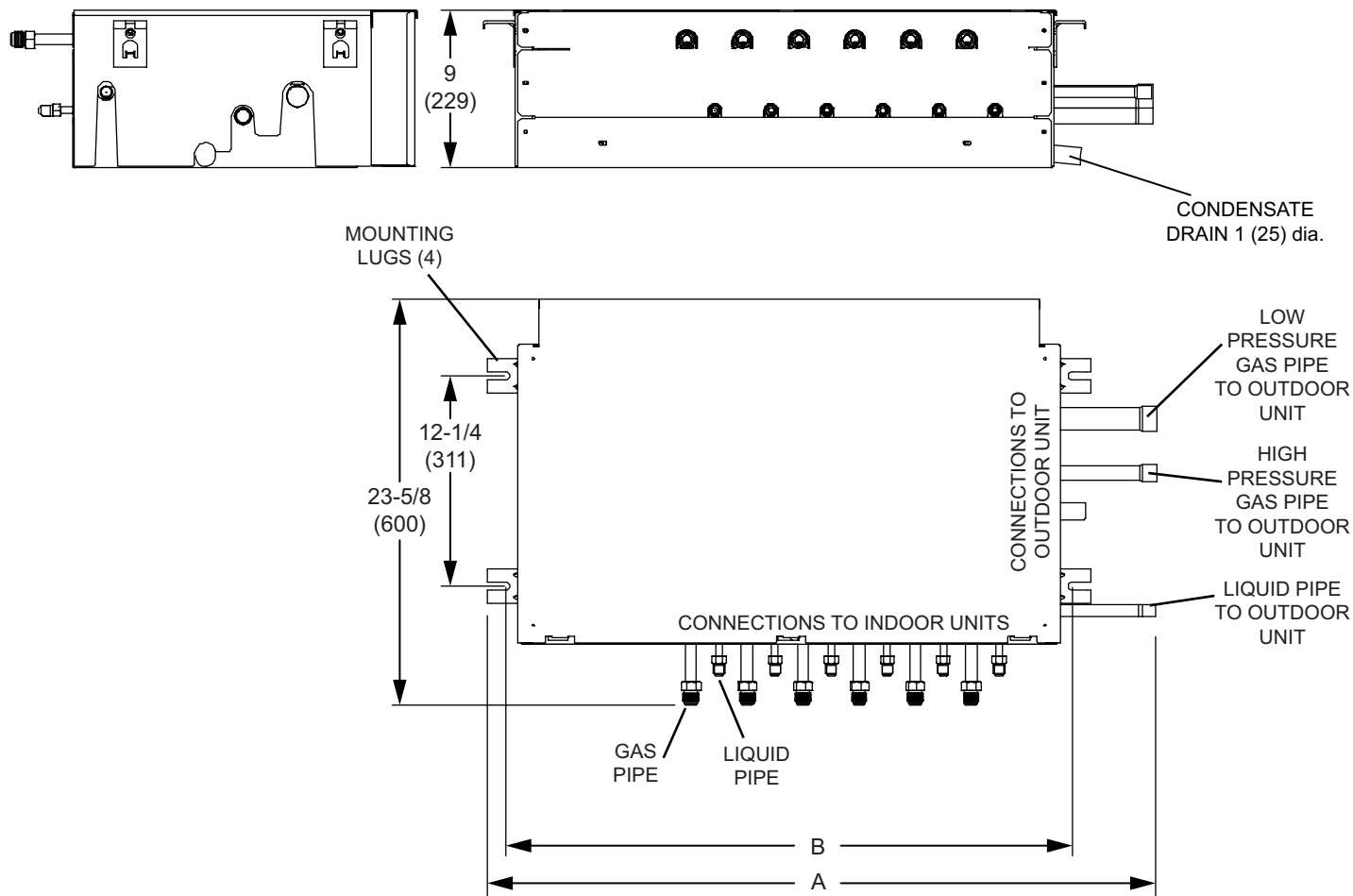


NOTE – Due to Lennox' ongoing commitment to quality, Specifications, Ratings and Dimensions subject to change without notice and without incurring liability. Improper installation, adjustment, alteration, service or maintenance can cause property damage or personal injury. Installation and service must be performed by a qualified installer and servicing agency.



SUBMITTAL DATA  
 MODE **SELECTION BOX**  
**V8MSBB03**  
**VRF HEAT RECOVERY**

**DIMENSIONS - INCHES (MM)**



Model No.	A		B	
	in.	mm	in.	mm
<b>V8MSBB03</b>	37-3/4	959	32-1/4	819

Model No.	Pipe Diameter - in.				
	Connections to Outdoor Unit			Connections to Indoor Unit	
	Low Pressure Gas Pipe	High Pressure Gas Pipe	Liquid Pipe	<sup>1</sup> Liquid Pipe	<sup>2</sup> Gas Pipe
<b>V8MSBB03</b>	1-1/8	7/8	5/8	3/8	5/8

<sup>1</sup> 3/8 x 1/4 in. adaptor furnished for liquid pipe connection to outdoor unit (if required).

<sup>2</sup> 5/8 x 1/2 in. adaptor furnished for gas pipe connection to outdoor unit (if required).