



G15 SERIES UP-FLO GAS FURNACES

40,000 thru 125,000 Btuh Input
Add-On Cooling 2 thru 5 Nominal Tons

Cabinet — Rugged cabinet is constructed of heavy gauge steel with a baked-on enamel finish. Cabinet is designed for left or right side, rear or bottom return air. Complete service access is accomplished by removing furnace and blower compartment access panels. Safety interlock switch automatically turns power off to unit when blower access panel is removed. Heat exchanger section is insulated front and rear with foil faced fiberglass insulation to minimize heat loss and reduce operating noise.

Heat Exchanger — Heat exchanger is constructed of 18 gauge steel with cross ribs in each section designed to increase turbulence and improve heat transfer.

Burner Assembly — Steel burners are designed to minimize port blockage from lint and dirt. A stainless steel crossover igniter perpendicular to the main burner carries a positive flame from burner to burner to achieve quiet and sure ignition. Direct electric spark ignition coupled with a redundant step opening gas valve insures safe and positive ignition of burners on each operating cycle.

Blower Assembly — All units are equipped with variable speed direct drive blowers with PSC or shaded pole motors. PSC motors have low starting torque, high efficiency and accelerate to operating speed smoothly and quietly. Motors are resiliently mounted for quiet operation. Change in blower speed is accomplished by a simple change in wiring. Entire blower assembly slides out of blower compartment for servicing.

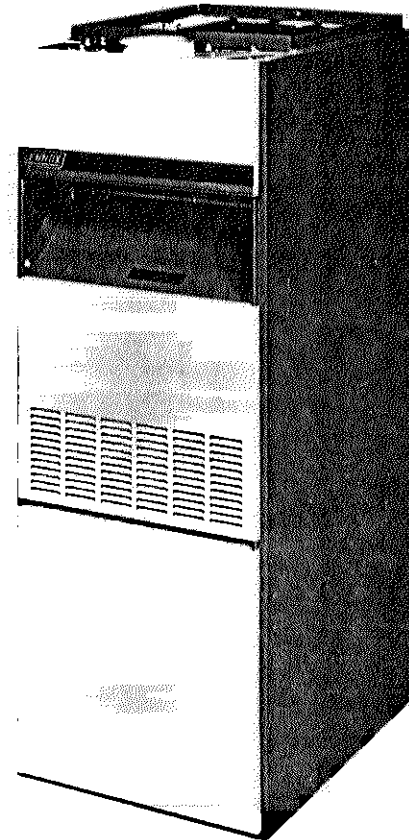
Fan & Limit Control — Blower operation is thermally controlled to help minimize cold drafts at start-up and utilize residual heat before shutdown. Limit control gives protection against abnormal operating conditions.

Wiring — Wiring is uniformly color-coded for easy hookup. The terminal board in the blower junction box permits easy selection of motor speeds.

Cleanable Air Filter — Washable or vacuum cleanable frame type 1 inch thick filter is furnished as standard. Filter is readily accessible in unit for quick and easy removal for servicing.

Optional Vent Damper — Automatic vent damper is available for field installation and must be ordered extra. Damper prevents the escape of heated air up the flue after burners shut off and minimizes infiltration during furnace off cycles.

Thermostat (Not Furnished) — Heating thermostat is not furnished and must be ordered extra.



SPECIFICATIONS

Model No.		*G15D2E-50	G15Q3.5E-60	G15Q4E-100	G15Q5E-125
Input Btuh		*50,000	60,000	100,000	125,000
†Output Btuh	with Vent Damper	40,000	46,000	78,000	99,000
	without Vent Damper	39,000	46,000	78,000	99,000
†A.F.U.E.	with Vent Damper	81.0	80.1	80.0	80.5
	without Vent Damper	73.6	70.3	71.6	72.0
California Seasonal Efficiency	with Vent Damper	83.0	76.5	77.7	76.1
	without Vent Damper	71.2	66.3	69.0	68.7
Temperature rise (°F)		40	55	60	60
Flue size (in.)		4 round	4 round	5 round	5 round
Gas piping size I.P.S. (in.) natural gas only		1/2	1/2	1/2	1/2
Blower motor horsepower		1/5	1/3	1/2	1/2
Filter no. & size (in.)		(1) 14 x 25 x 1	(1) 16 x 25 x 1	(1) 16 x 25 x 1	(1) 16 x 25 x 1
Tons of cooling that can be added		2	3-1/2	4	5
Shipping Data	Net weight (lbs.)	135	154	180	205
	Shipping weight (lbs.)	140	160	185	217
Electrical characteristics	voltage	115v/60hz./1 phase (less than 12 amps)			
	Full load amps	7.1	8.4	10.0	10.0
Vent Damper Assembly (optional)		65F77			65F78

NOTE — Heating capacity valid for elevations up to 2,000 feet above sea level. For elevations above 2,000 feet, rated capacity should be reduced by 4% for each 1,000 feet above sea level.

†Annual Fuel Utilization Efficiency based on DOE test procedures. *Orifices provided for field conversion to 40,000 Btuh input.

NOTE -- Specifications, Ratings and Dimensions subject to change without notice.

G15D2E-50 BLOWER PERFORMANCE

G15Q3.5E-60 BLOWER PERFORMANCE

External Static Pressure (in. wg)	Air Volume (cfm) @ Various Speeds	
	High	Low
.10	1060	960
.20	1000	925
.30	935	870
.40	865	790
.50	775	720

External Static Pressure (in. wg)	Air Volume (cfm) @ Various Speeds			
	High	Medium	Medium-Low	Low
.10	1480	----	----	----
.20	1470	1260	----	----
.30	1450	1250	1060	----
.40	1410	1220	1060	910
.50	1370	1180	1050	910

G15Q4E-100 BLOWER PERFORMANCE

G15Q5E-125 BLOWER PERFORMANCE

External Static Pressure (in. wg)	Air Volume (cfm) @ Various Speeds			
	High	Medium	Medium-Low	Low
.10	1760	1590	1480	1350
.20	1700	1550	1450	1330
.30	1640	1500	1410	1310
.40	1580	1440	1360	1280
.50	1515	1380	1310	1230

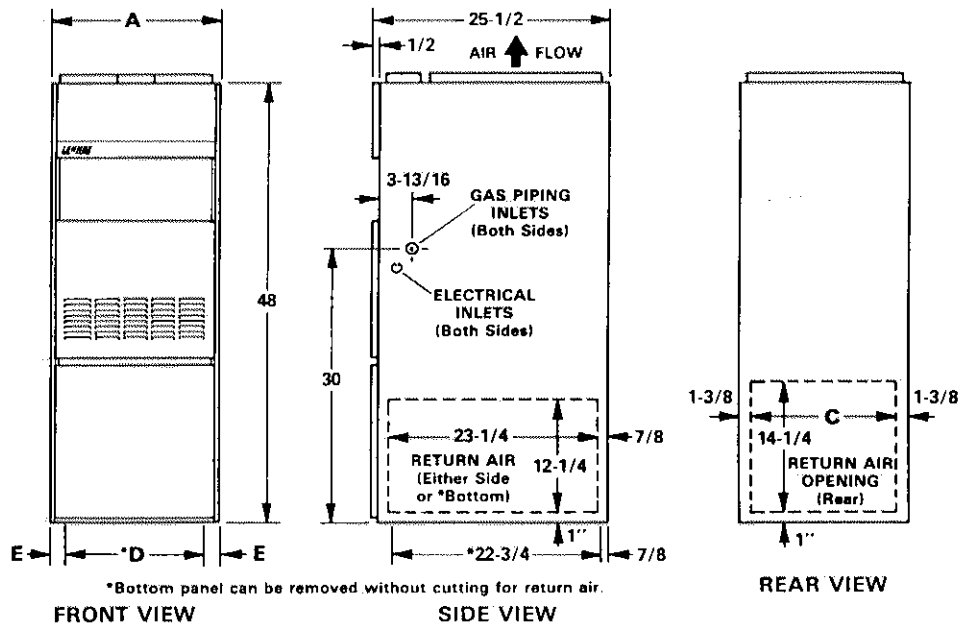
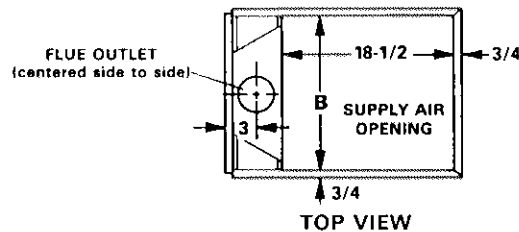
External Static Pressure (in. wg)	Air Volume (cfm) @ Various Speeds			
	High	Medium	Medium-Low	Low
.10	2100	1750	1535	1350
.20	2040	1735	1510	1325
.30	2010	1710	1490	1310
.40	1965	1680	1470	1245
.50	1920	1680	1450	1270

A.G.A. INSTALLATION CLEARANCES (inches)

Front	Sides	Rear	Top	Flue
6	*0	0	1	6

*1 inch on G15D2E-50 and G15Q3.5E-60 models if single wall vent pipe is used.

DIMENSIONS (inches)



*Bottom panel can be removed without cutting for return air.

Model No.	A	B	C	D	E
G15D2E-50	14-1/4	12-3/4	11-1/2	1-1/4	11-3/4
G15Q3.5E-60	16-1/4	14-3/4	13-1/2	1-1/4	13-3/4
G15Q4E-100	18-1/4	16-3/4	15-1/2	1-3/4	14-3/4
G15Q5E-125	21-3/4	20-1/4	19	1-5/8	18-1/2