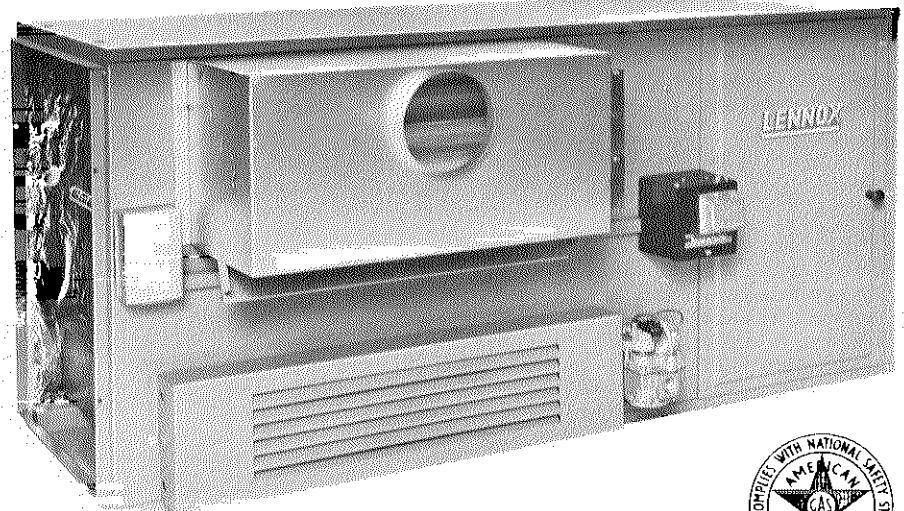




**FORCED AIR GAS FURNACES
GS11 SERIES — HORIZONTAL STOWAWAY®
60,000 to 140,000 Btuh Input
Add-On Cooling 1-1/2 thru 5 Nominal Tons**

- Factory Assembled and Tested
- Several Sizes Available
- Low Cost Installation
- Sized For Air Conditioning
- Durable Heat Exchanger
- Efficient Steel Burners
- Compact Cabinet Design
- Complete Service Access
- Powerful Direct Drive Blower
- Right or Left-Hand Air Discharge
- Controls Furnished and Installed

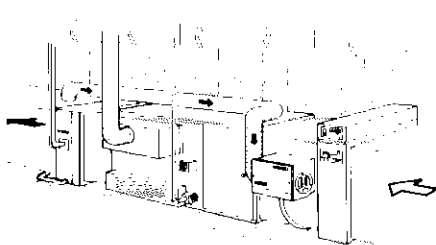


Horizontal STOWAWAY® Gas Furnaces Provide Dependable, Space-Saving Comfort Systems

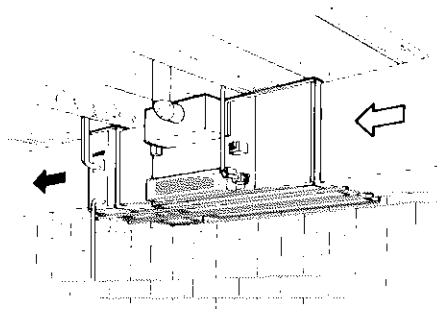
The Lennox GS11 series horizontal STOWAWAY gas furnaces are designed for installations that will save valuable floor space for other purposes. These versatile units can be installed on combustible flooring in an attic space, on a slab in crawl space, suspended from the ceiling in a utility or furnace room. Lennox direct expansion evaporator cooling unit, electronic air cleaner and automatic humidifier can easily be added to the horizontal gas furnace for a complete all season Total Comfort system. Heavy gauge steel cabinet has deluxed baked-on enamel finish. Heating section is insulated to cut heat loss. Cabinet has provisions for suspending. A choice of vent connection, burner, controls location and blower service access is provided at the front or

rear of the unit. Units are shipped for left-hand air discharge. Rugged heat exchanger is designed for maximum heat transfer and minimum air resistance. Quiet operating blower has sufficient capacity to handle add-on air conditioning air volume requirements. Furnaces are A.G.A. Certified. In addition, units have been rated and tested according to Department of Energy (D.O.E.) test procedures and Federal Trade Commission (F.T.C.) labeling regulations. Air filter(s) and filter adapter are available as optional equipment and must be ordered extra. Units are test operated at the factory and shipped completely assembled. Installer has only to locate unit, mount thermostat, make duct, vent, gas line and electrical connections to complete the installation.

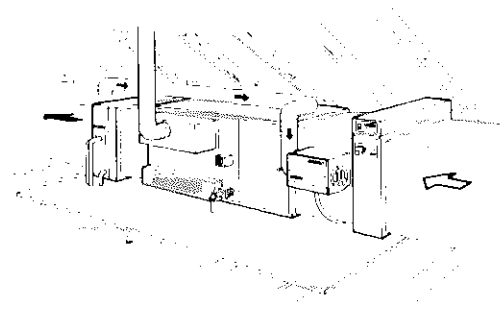
Typical Applications



Crawl Space Installation
With cooling coil, electronic air cleaner and automatic humidifier



Basement Installation
With cooling coil



Attic Installation
With cooling coil, electronic air cleaner and automatic humidifier

FEATURES

Rugged Cabinet — Constructed of heavy gauge cold rolled steel with a durable baked-on enamel finish. Heating section of cabinet is completely lined with foil faced fiberglass insulation resulting in low cabinet surface temperatures and quiet operation. Flanges on supply and return air openings permit ease of duct connection. Knock-outs are furnished in the top and bottom panels for hanger rods. Vent connection can be made at front or rear of unit. Large removable doors, front and rear, provide complete service access to blower compartment. Doors are equipped with knobs for easy removal. Units are shipped for left-hand supply air discharge. For applications requiring a change in supply air direction simply relocate the draft hood, controls, wiring channel enclosure, gas valve and the main burner with pilot to the opposite side of the unit.

Efficient Direct Drive Blower — Units are equipped with quiet, variable speed direct drive blowers. Each blower is statically and dynamically balanced. Multiple-speed motor is resiliently mounted. A choice of blower speeds is available on each blower. See blower performance charts. Change in blower speed is easily accomplished by a simple change in wiring.

Durable Heat Exchanger — Clamshell type heat exchanger is constructed of heavy gauge cold rolled steel and is designed for normal expansion and contraction without metal fatigue. Design provides long service life, maximum efficiency and minimum resistance to air flow.

Steel Burners — Each burner has two rows of practically continuous steel ports which result in quiet and clean combustion. Burner and port surfaces are smooth with no ledges or ridges to accumulate lint and dirt. A crossover igniter, perpendicular to the main burner, carries a positive flame from burner to burner to achieve fast, sure and safe ignition. Individually removable burners and pilot burner are mounted in a slide-out tray for ease of service. A primary air shutter assembly is furnished on all units. The air shutters are linked to each adjacent burner so adjustment of the outboard burner adjusts all the other burners at the same time.

Wiring Junction Box — Power supply and thermostat wiring connections are made at junction box. Conveniently located on front of the unit for easy access. Junction box lid has a screw terminal board for ease of thermostat wiring connections.

Transformer — 24 volt control transformer is furnished as standard equipment and is factory installed on the wiring junction box.

Blower Cooling Relay — Furnished as standard equipment and factory installed on the wiring junction box. Relay activates blower operation during cooling cycle.

Fan and Limit Controls — Factory installed, wired and accurately located. Fan control assures proper blower operation and has adjustable blower off temperature setting. Continuous blower operation may be accomplished by adjusting the fan control to the minimum temperature setting. Dual limit controls, one located at each end of the heating section, provide protection from abnormal operating conditions.

Automatic Gas Controls — 24 volt redundant combination gas control valve combines automatic safety pilot, pilot and bleed gas filtration, automatic electric valve (dual) and gas pressure regulation into a compact combination control. Additionally, manual main shut-off valve is included. Dual valve design provides double assurance of 100% close off of gas to the pilot and main burners on each heating cycle. Manual lighted standing pilot burner provides sure and safe main burner ignition. For LPG models a field conversion kit is required and must be ordered extra.

Thermostat (Not Furnished) — Heating thermostat is optional equipment and must be ordered extra. For all season applications a heating-cooling thermostat is available with the condensing unit.

Air Filters (Optional) — One inch thick frame filters are available and must be ordered extra. Filter media is washable or vacuum cleanable polyurethane coated with oil for increased efficiency. Use RP products filter coating no. 418(P-8-5069) when reoiling. See specification table for filter size.

Filter Adapter (Optional) — Field installs to the return air inlet of the unit and extends into the return air plenum or duct exterior to the blower section. Filter(s) are accessible for removal and replacement through front and rear blower section access doors. Filters are not included with adapter and must be ordered extra.

SPECIFICATIONS

GS11-60, GS11-80 AND GS11-100 MODELS

Model Number		GS11Q3-60	GS11D2-80	GS11Q3-80	GS11D2-100	GS11Q4-100
Input Btuh		60,000	80,000	80,000	100,000	100,000
†Output Btuh	Unconditioned Space	41,000	55,000	55,000	69,000	69,000
	Conditioned Space	44,000	59,000	59,000	74,000	74,000
†A.F.U.E.	Unconditioned Space	55.0%	55.0%	55.0%	55.0%	55.0%
	Conditioned Space	60.0%	60.0%	60.0%	60.0%	60.0%
Vent size (in.)		4	5	5	5	5
A.G.A. certified high statics (in. wg.)		.50	.50	.50	.50	.50
Gas piping size (in.) (Nat. & *LPG)		1/2	1/2	1/2	1/2	1/2
Blower wheel nom. diam. x width (in.)		10 x 6	10 x 6	10 x 6	9 x 8	10 x 8
Blower motor horsepower		1/3	1/4	1/3	1/4	1/3
Tons of additive cooling		1-1/2, 2 or 2-1/2	1-1/2 or 2	2-1/2 or 3	2 or 2-1/2	3, 3-1/2 or 4
Shipping weight (lbs.) 1 Package		186	208	208	232	236
Electrical characteristics		120 volts — 60 hertz — 1 phase (all units)				
Optional	Model No.	FC3-60	FC3-80	FC3-80	FC3-100	FC3-100
Filter Adapter	Shipping weight (lbs.)	5	6	6	7	7
**Optional Filters, no. & size (in.)		(1) 15 x 20 x 1	(1) 16 x 10 x 1	(1) 16 x 20 x 1	(1) 20 x 20 x 1	(1) 20 x 20 x 1

†Annual Fuel Utilization Efficiency based on D.O.E. test procedures and F.T.C. labeling regulations.
 *For LPG units a field changeover kit is required and must be ordered extra. Order number 24C55 all models.
 **Filters must be ordered extra.

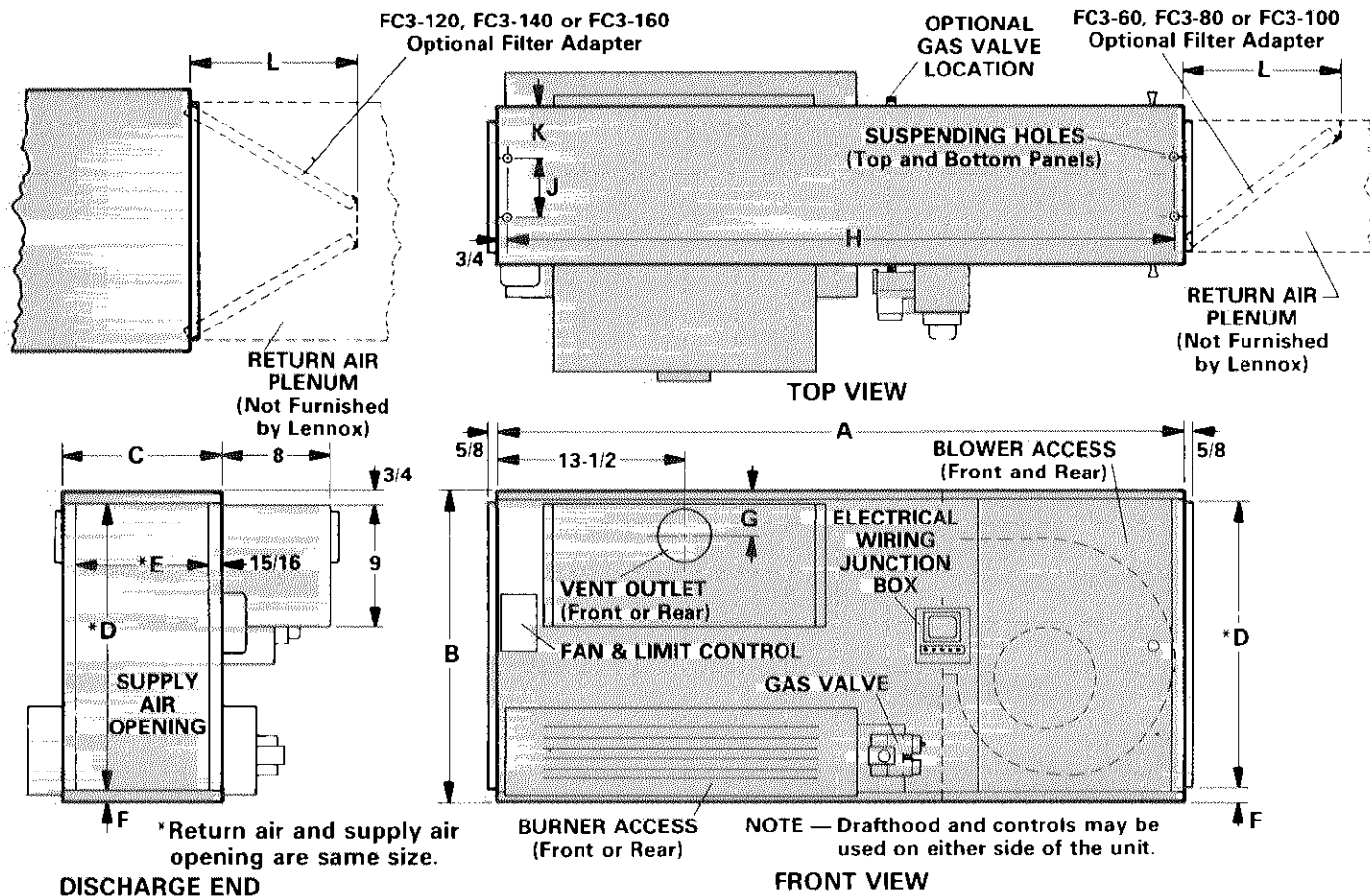
GS11-120 and GS11-140 MODELS

Model Number		GS11Q5-120	GS11Q3-140	GS11Q5-140
Input Btuh		120,000	140,000	140,000
†Output Btuh	Unconditioned Space	83,000	97,000	97,000
	Conditioned Space	89,000	104,000	104,000
†A.F.U.E.	Unconditioned Space	55.0%	55.0%	55.0%
	Conditioned Space	60.0%	60.0%	60.0%
Vent size (in.)		5	6	6
A.G.A. certified high statics (in. wg.)		.50	.50	.50
Gas piping size (in.) (Nat. & *LPG)		1/2	1/2	1/2
Blower wheel nom. diam. x width (in.)		10 x 10	10 x 10	10 x 10
Blower motor horsepower		1/2	1/3	1/2
Tons of additive cooling		3, 3-1/2, 4 or 5	2-1/2 or 3	3-1/2, 4 or 5
Shipping weight (lbs.) (1 package)		263	289	308
Electrical characteristics		120 volts — 60 hertz — 1 phase (all units)		
Optional	Model No.	FC3-120	FC3-140	FC3-140
Filter Adapter	Shipping weight (lbs.)	5	6	6
**Optional Filter(s), no. & size (in.)		(2) 15 x 20 x 1	(2) 15 x 20 x 1	(2) 15 x 20 x 1

†Annual Fuel Utilization Efficiency based on D.O.E. test procedures and F.T.C. labeling regulations.
 *For LPG units a field changeover kit is required and must be ordered extra. Order Number 24C55 all models.
 **Filters must be ordered extra.

DIMENSIONS (inches)

NOTE — Provide adequate service clearance of at least 30 inches at front of unit.



Model No.	A	B	C	D	E	F	G	H	J	K	L
GS11Q3-60	50	22-3/4	11-5/8	21	9-3/4	7/8	2-5/16	48-1/2	4-1/8	3-3/4	11
GS11D2-80, GS11Q3-80	50	22-3/4	14-1/8	21	12-1/4	7/8	2-13/16	48-1/2	6-5/8	3-3/4	10-9/16
GS11D2-100, GS11Q4-100	50	22-3/4	16-5/8	21	14-3/4	7/8	2-13/16	48-1/2	9-1/8	3-3/4	13-3/8
GS11Q5-120	50	22-3/4	19-1/8	21	17-1/4	7/8	2-13/16	48-1/2	11-5/8	3-3/4	11-11/16
GS11Q3-140, GS11Q5-140	53	24	21-5/8	21-3/4	19-3/4	1-1/8	3-5/16	51-1/2	10-1/2	5-9/16	10-13/16

HIGH ALTITUDE DERATE

If the heating value of the gas does not exceed values listed in table, derating of unit is not required. Should the heating value of the gas exceed the table values, or if the elevation is greater than 6,000 feet above sea level it will be necessary to derate unit. Lennox requires that derate conditions be 4% per thousand feet above sea level. Thus at an altitude of 4000 feet, if the heating value of the gas exceeds 1000 Btu/ft³, the unit will require a 16% derate.

Elevation Above Sea Level (Feet)	Maximum Heating Value (Btu/ft ³)
5001 — 6000	900
4001 — 5000	950
3001 — 4000	1000
2001 — 3000	1050
Sea Level — 2000	1100

A.G.A. INSTALLATION CLEARANCES (inches)

Rear & Sides	6
Top	8
Floor	Combustible
*Vent	6

*This clearance to all vent pipes except type "B." Type "B" vent clearance is listed by U.L.

NOTE — A clearance of at least 30 inches should be provided at the front of the unit for combustion air and servicing.

BLOWER DATA

GS11Q3-60 BLOWER PERFORMANCE

External Static Pressure (in. wg.)	Air Volume (cfm) @ Various Speeds		
	High	Medium	Low
.15	1410	890	650
.20	1380	870	630
.25	1350	850	620
.30	1310	830	600
.35	1280	820	580
.40	1240	800	560
.45	1200	770	540
.50	1160	750	520

NOTE—All cfm is measured external to furnace. Filter resistance not included.

GS11D2-80 BLOWER PERFORMANCE

External Static Pressure (in. wg.)	Air Volume (cfm) @ Various Speeds		
	High	Medium	Low
.15	1155	930	800
.20	1140	925	795
.25	1115	920	790
.30	1090	910	785
.35	1070	890	775
.40	1050	855	760
.45	1025	835	735
.50	1000	800	700

NOTE — All cfm is measured external to furnace. Filter resistance not included.

GS11Q3-80 BLOWER PERFORMANCE

External Static Pressure (in. wg.)	Air Volume (cfm) @ Various Speeds		
	High	Medium	Low
.15	1510	1190	805
.20	1470	1175	805
.25	1440	1160	805
.30	1400	1140	800
.35	1370	1130	795
.40	1330	1115	790
.45	1295	1095	770
.50	1250	1060	750

NOTE — All cfm is measured external to furnace. Filter resistance not included.

GS11D2-100 BLOWER PERFORMANCE

External Static Pressure (in. wg.)	Air Volume (cfm) @ Various Speeds		
	High	Medium	Low
.15	1240	1025	900
.20	1210	1025	900
.25	1185	1020	900
.30	1150	1010	890
.35	1120	990	880
.40	1080	960	860
.45	1040	930	830
.50	1000	900	800

NOTE — All cfm is measured external to furnace. Filter resistance not included.

GS11Q4-100 BLOWER PERFORMANCE

External Static Pressure (in. wg.)	Air Volume (cfm) @ Various Speeds		
	High	Medium	Low
.15	1790	1340	1040
.20	1760	1340	1040
.25	1730	1340	1040
.30	1700	1340	1040
.35	1670	1330	1035
.40	1630	1320	1030
.45	1590	1300	1025
.50	1550	1270	1020
.55	1460	1250	1020
.60	1410	1200	990
.65	1360	1180	940
.70	1310	1140	930

NOTE — All cfm is measured external to furnace. Filter resistance not included.

GS11Q5-120 BLOWER PERFORMANCE

External Static Pressure (in. wg.)	Air Volume (cfm) @ Various Speeds		
	High	Medium	Low
.15	2270	1880	1290
.20	2220	1850	1280
.25	2160	1820	1270
.30	2100	1770	1250
.35	2040	1720	1230
.40	1970	1660	1200
.45	1900	1600	1180
.50	1840	1540	1140
.55	1670	1480	1090
.60	1600	1380	1020
.65	1520	1330	980
.70	1430	1250	910

NOTE — All cfm is measured external to furnace. Filter resistance not included.

GS11Q3-140 BLOWER PERFORMANCE

External Static Pressure (in. wg.)	Air Volume (cfm) @ Various Speeds		
	High	Medium	Low
.15	1940	1370	1030
.20	1880	1360	1020
.25	1840	1350	1010
.30	1800	1340	1000
.35	1760	1320	990
.40	1720	1300	970
.45	1680	1260	950
.50	1650	1220	940

NOTE — All cfm is measured external to furnace. Filter resistance not included.

GS11Q5-140 BLOWER PERFORMANCE

External Static Pressure (in. wg.)	Air Volume (cfm) @ Various Speeds		
	High	Medium	Low
.15	2220	1750	1200
.20	2170	1740	1190
.25	2140	1730	1180
.30	2110	1710	1170
.35	2070	1690	1160
.40	2040	1670	1150
.45	1990	1640	1140
.50	1950	1610	1130
.55	1900	1560	1100
.60	1850	1505	1065
.65	1780	1460	1030
.70	1720	1410	995

NOTE — All cfm is measured external to furnace. Filter resistance not included.